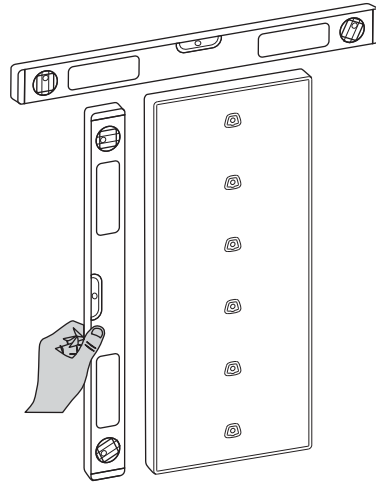
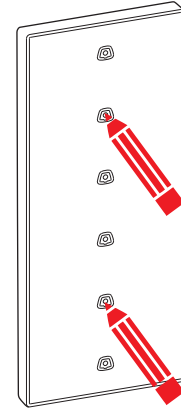




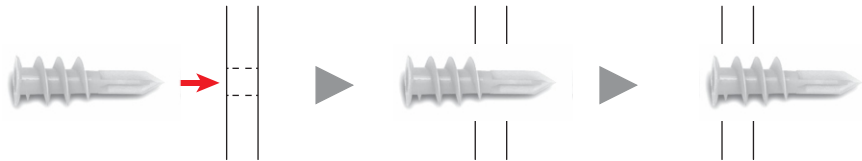
Step 1.
Place the Optitile on the wall
and make sure it is even and level



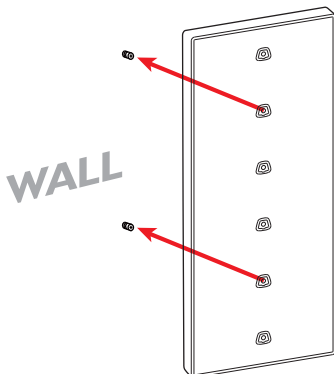
Step 2.
Mark the 2nd and the 5th hole
with a pencil on the wall



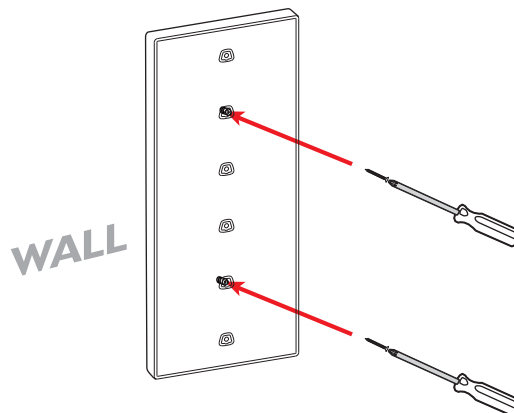
Step 3.
Remove the Optitile from the wall and insert the anchors
into the marked spots



Step 4.
Place the Optitile back on the wall
and line up the anchors with the
2nd and the 5th hole



Step 5.
Use the 2 screws to secure the Optitile
on the 2nd and the 5th holes



Step 6.
Insert the 6
frame holders

