



Installation & Operations Manual



4G Cellular Gateway 2100-LTEGSM4 & 2100-LTEVER4



Thank you for purchasing RATH's Cellular Gateway. We are the largest Emergency Communication Manufacturer in North America and have been in business for over 35 years.

We take great pride in our products, service, and support. Our Emergency Products are of the highest quality. Our experienced customer support teams are available to remotely assist with site preparation, installation, and maintenance. It is our sincere hope that your experience with us has and will continue to surpass your expectations.

Thank you for your business,

The RATH® Team

Table of Contents

Items Needed	Page 3
Setting up the Cellular Gateway	Page 3
Connector Description	Page 5
LED Indicators	Page 6
Wiring Diagrams	Page 7
Appendix	Page 9

Items Needed

Included:

- 4G Cellular Gateway
- Antenna

Not Included:

- Phillips screwdriver
- AT&T or Verizon SIM card and plan (see details below)

2100-LTEGSM4 (AT&T)

- Standard size AT&T SIM card (25mm x 15mm)
- Business data plan with voice capabilities OR
- RATH® 2-year plan (part # ATTPLAN-2)
- Disable voicemail and call waiting

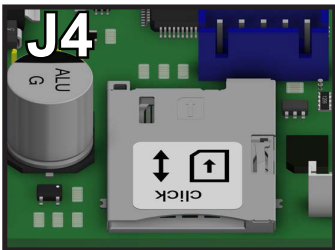
2100-LTEVER4 (Verizon)

- **The customer must have access to a Verizon Business Manager to manually modify the account.****
- Flex Data Plan required
 - Add access HD voice
 - Remove call waiting
 - Remove voicemail
 - Standard size Verizon SIM card (25mm x 15mm) required

Setting up the Cellular Gateway

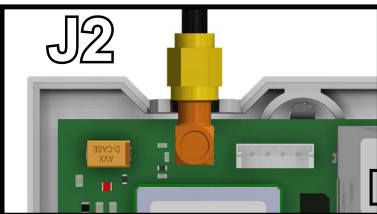
1. Open the Cellular Gateway by unscrewing the screw on the left side of the front cover with a Phillips screwdriver and gently pull up on the left side.
2. Insert SIM card into J4 with the perforated edge first and the gold contact side facing downward. Push until you hear it click. If SIM card does not click into place the wrong size SIM card is being used.

Note: Do NOT use a nano or micro size SIM card with an adapter. The adapter edge can catch and cause permanent damage.

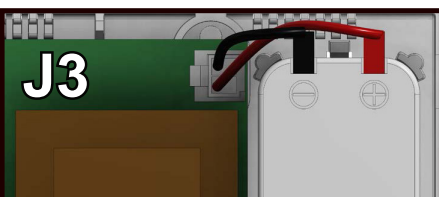


3. Screw in the antenna to J2 on the Cellular Gateway and ensure it is completely tightened.

Note: Only use antennas approved by. RATH®.



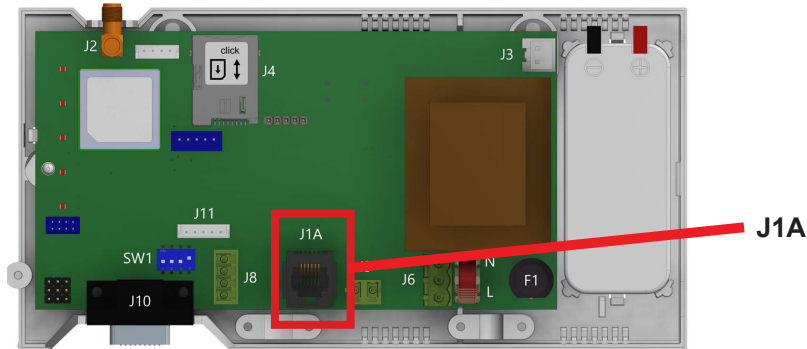
4. Connect the battery to J3.



5. Connect the phone(s). The Cellular Gateway provides an RJ11 jack or hardwired screw terminals for connecting devices. **Do not exceed 1,000 feet.**

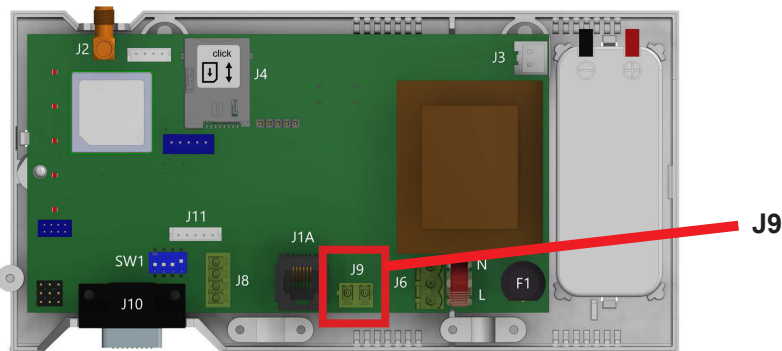
RJ11 Jack:

- a. Take a male RJ11 phone line cord or plug it into the J1A jack on the Cellular Gateway.
- b. Plug the other end of the line cord into desired device.

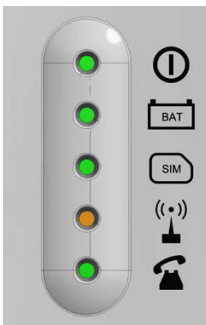


Hardwired Connection:

- a. Gently remove provided 2 pin connector from J9 on the Cellular Gateway.
- b. Screw the 2 wire connection from the desired device into the 2 pin connector. Pin 1 is tip (neutral) and pin 2 is ring (positive).
- c. Plug the 2 pin connector back into J9.

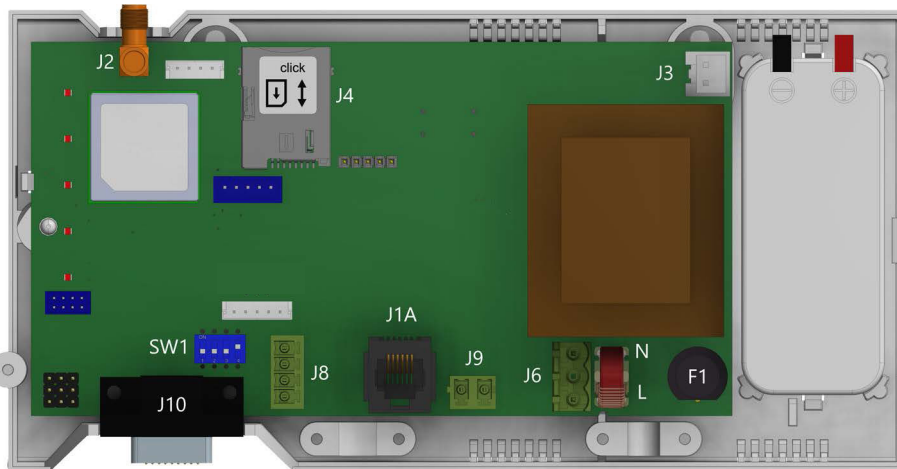


6. Wait for the LED lights to turn on. Check the SIM LED to make sure it is green or amber. If it is flashing red, check that the SIM card has been inserted correctly.
7. A signal strength test is recommended. Check the signal strength by using the built-in network signal strength scanner. See “Signal Strength Test” section on page 9 for more information.
8. Plug power cord into 120vac power source or turn on 120vac power source.
9. Place the lid back on the top of the Cellular Gateway and fasten the lid with the screw.
10. The RUN LED should change color from flashing amber to flashing green when the main power connection is made. If you see any other color, please consult the LED indication list.



RUN LED FLASHES GREEN	POWER SUPPLY IS OK
BAT LED IS ALWAYS ON	BATTERY IS OK
SIM LED IS AMBER	DEVICE IS CONNECTED TO THE NETWORK
COVERAGE LED IS GREEN OR AMBER	GOOD COVERAGE
SLIC LED IS GREEN	DEVICE IS IN STANDBY

Connector Description



	DESCRIPTION
J2	EXTERNAL ANTENNA
J3	BATTERY
J6	POWER SUPPLY
J8	CANBUS
J9/J1A	PHONE LINE
J10	RS232 CONNECTOR

Note: To access dipswitches and connectors, open the Cellular Gateway case by unfastening the front screw using a Phillips screwdriver and removing the lid.

Note: Connect to RS232 (J10) to use as a data pass through. Distance limitation is approximately 1,000 feet. Actual numbers will vary based on the cable and gauge used.

J8 - CANBUS: CANBUS can only be used with specific Avire products. See supplemental manual.

J2 - External Antenna: Connect the provided external antenna to the J2 connector. Only antennas approved by RATH® should be used or the Cellular Gateway may not function properly and may be damaged.

J3 - BATTERY

PIN	FUNCTION	SIGNAL
1	+12	POSITIVE
2	GND	NEGATIVE

J6 - POWER SUPPLY

PIN	FUNCTION	SIGNAL
1	L	LIVE
3	N	NEUTRAL


Supply Voltage: 100-240vac, 60/60 Hz


J9 / J1A - PHONE LINE (SLIC)


PIN	FUNCTION	SIGNAL
1	L1	TIP
2	L2	RING


LED Indicators


This Cellular Gateway has five indicator LEDs that constantly report the device status. The indicators will be red, amber, or green. Each indicator will be fully on, fully off, or flashing. The table below provides an overview of what each colored LED indicates:

RUN LED	OFF	ON			FLASHING		
		GREEN	AMBER	RED	GREEN	AMBER	RED
		CRITICAL SYSTEM ERROR			PROPER OPERATION (AC)	PROPER OPERATION (BAT)	RESTARTING SYSTEM

BATTERY	OFF	ON			FLASHING	
		GREEN	AMBER	RED	AMBER	RED
		OK	AC CHARGING	LOW	DAU BATTERY FAILURE (NO AC)	ERROR

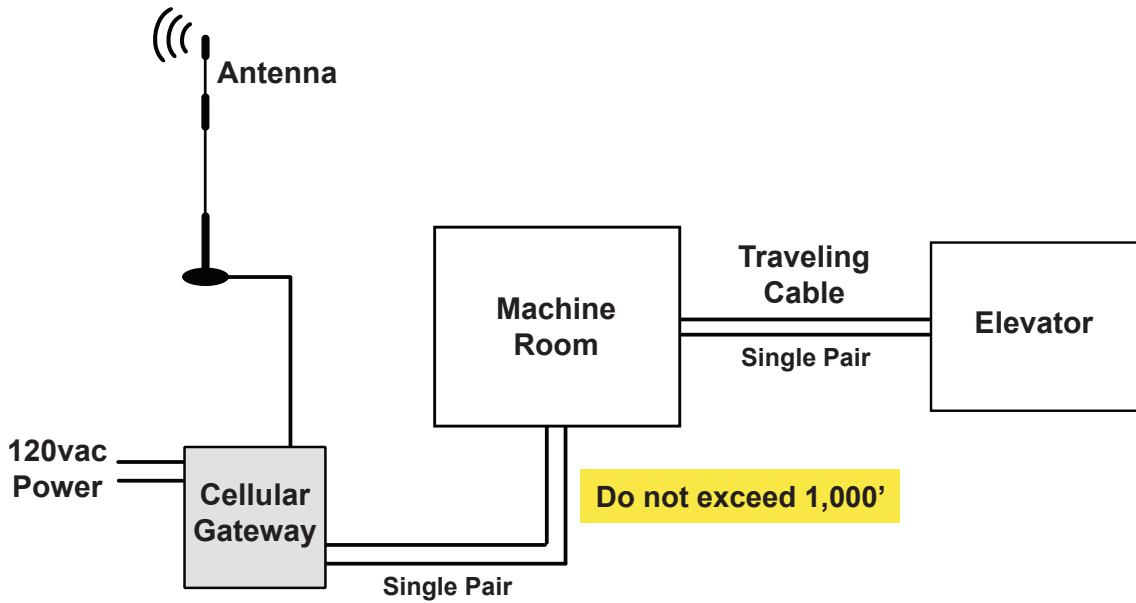
SIM	OFF	ON		FLASHING	
	AT MODEM	AMBER	RED	AMBER	RED
		REGISTERED	OUT OF SERVICE/INITIALIZING	ONGOING VOICE CALL	SIM ERROR

COVERAGE	OFF		ON		
			GREEN	AMBER	RED
				OK	MEDIUM

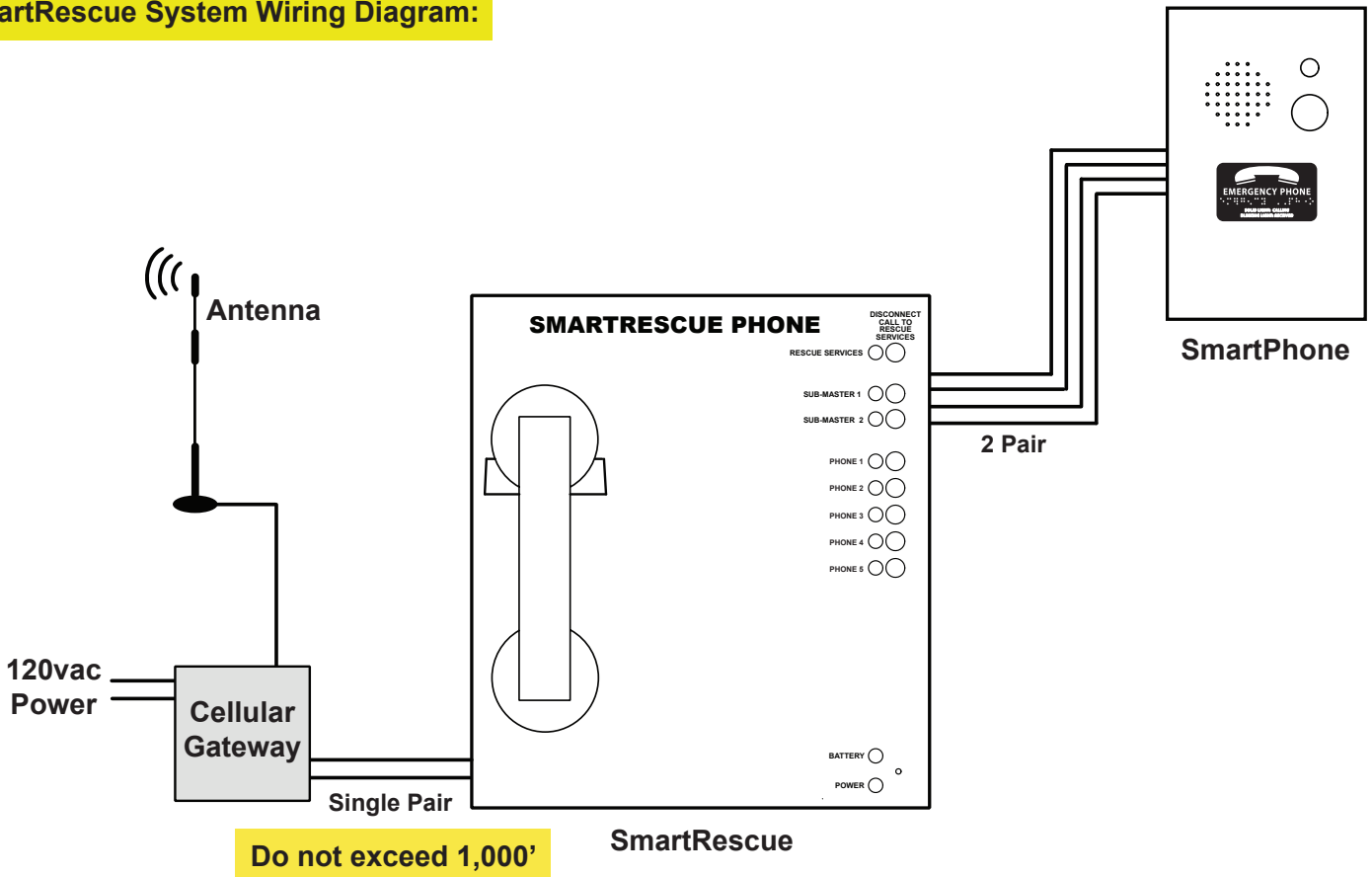
SLIC	OFF	GREEN	AMBER	RED	FLASHING GREEN
		LOCAL LINE READY	INITIALIZING LOCAL LINE	LOCAL LINE OUT OF SERVICE	LOCAL LINE IN USE

Wiring Diagrams

Elevator Application Wiring Diagram:

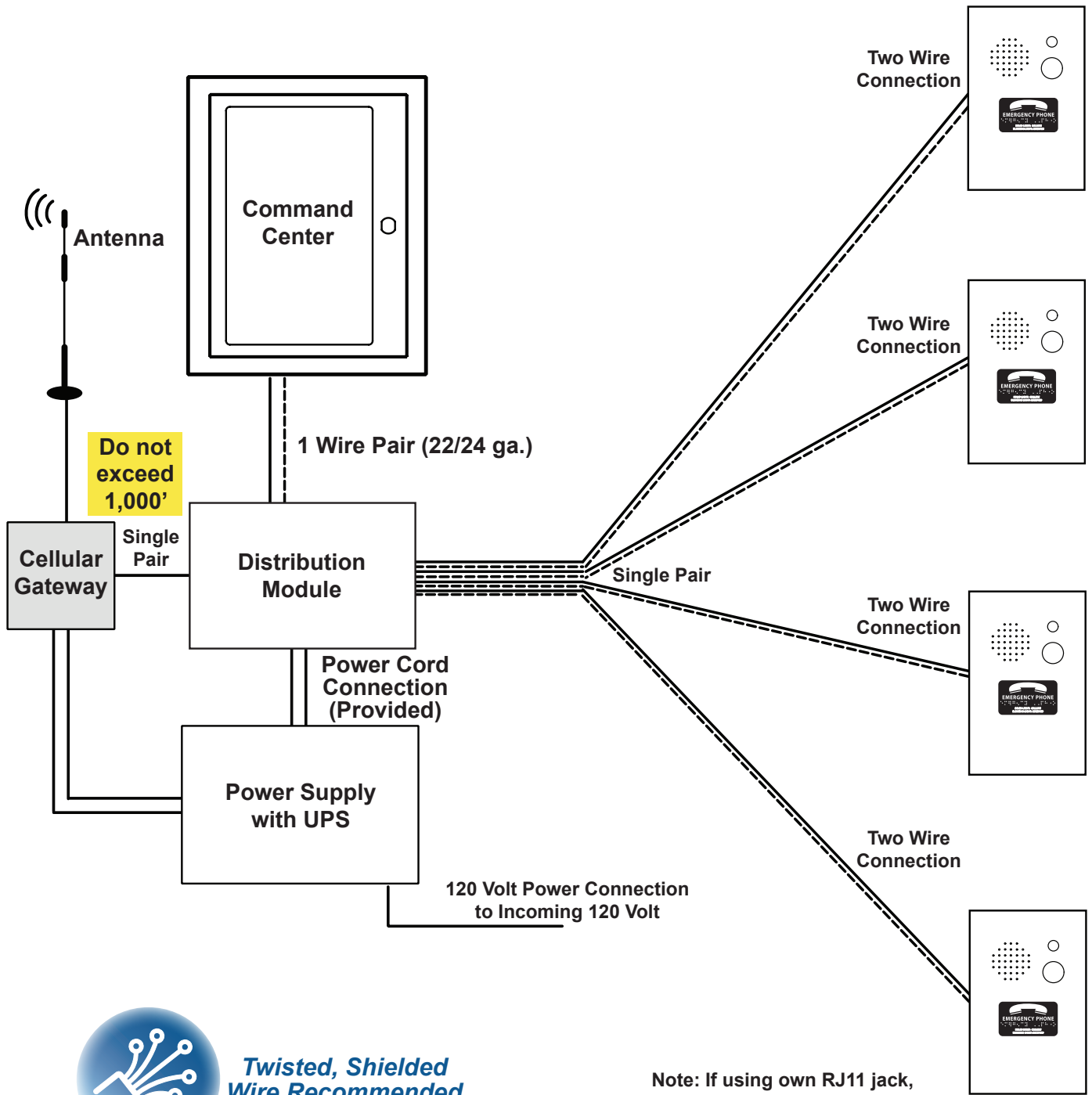


SmartRescue System Wiring Diagram:



*Twisted, Shielded
Wire Recommended*

Command Center System Wiring Diagram:



Twisted, Shielded Wire Recommended

Note: If using own RJ11 jack, use center pins only.

Appendix

Installation:

This equipment is intended for installation in restricted areas by qualified personnel.

Environmental Conditions:

This device is designed to be used indoors (32° F to 113° F with relative humidity between 20% and 80% not condensing). Sudden changes of temperature and humidity should be avoided.

Cleaning and Maintenance:

Use a soft dry cloth. Do not use solvent or abrasive products.

Safety:

Please read these safety instructions before starting the device.

- Do not expose this device to liquids or excessive humidity. This is an indoor device and is not waterproof.
- Do not expose this device to fire.
- Do not try to modify the device.
- Do not use this device in potentially hazardous areas or where there is risk of explosion.
- This device emits low levels of radio frequency when in operation.

Battery:

This Cellular Gateway includes a **NiMh 800mAh battery that allows it to keep functioning in the event of a main power failure. The battery provides 4 hours of talk time.** The battery should be replaced every 4 years. Only install batteries authorized by RATH® and only allow qualified personnel to replace the battery. The battery should be properly recycled and not disposed of with unsorted household waste. Please take all necessary precautions when changing the battery.

Voltage Rating:

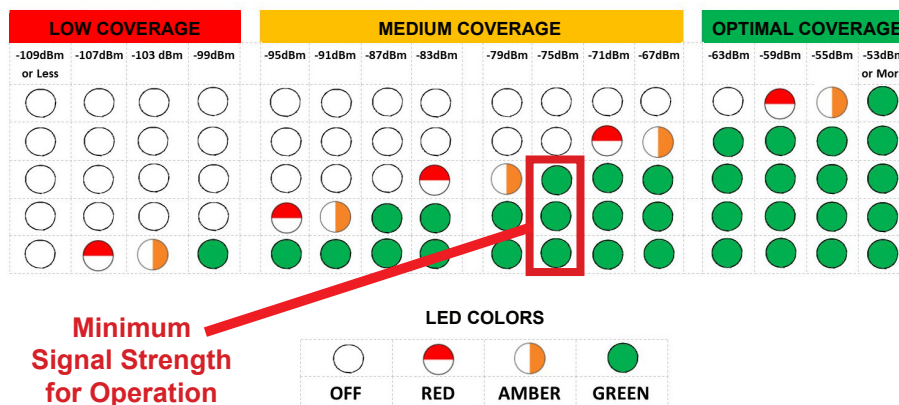
Idle: 110-120v, 50/60Hz, current draw 40mA

Active: Current draw 80mA

Signal Strength Test:

LEDs on the front of the device will show the network signal level. To use the scanner function, turn the SW1 dipswitch to “ON” (verify that dipswitch 4 is also ON). All LEDs will turn off except for the battery. Within 2 minutes, the signal strength LEDs will appear.

Note: The signal scanner will indicate the best location for the device to receive signal. Network coverage will be based on local conditions.



When finished, turn SW1 dipswitch 1 back to OFF. You can check the status of the power supply, battery, connection, coverage, or phone line (SLIC) at any time by referring to the LED indicators.

