

# ONE-PIECE BODY SPECIAL STEEL PADLOCKS



## STRUCTURAL FEATURES

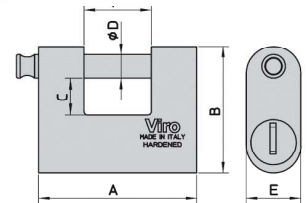
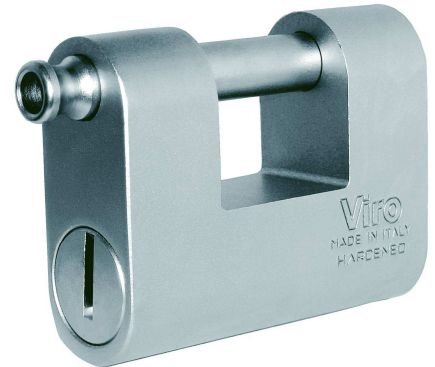
- **One-piece body**, special case-hardened and tempered steel, "Niploy Process" chemical nickel-plating for maximum corrosion resistance.
- **Safety cylinder** protected by a thick anti-drill rotating case-hardened and tempered special steel plate.
- **Rotating lock-bolt**: case-hardened, tempered and nickel-plated with "Niploy Process" system (Ø 13 mm for "Monolith", "EuroMonolith", "Thor" and "EuroThor"; Ø 10 mm for "Totem").
- **Ball type locking mechanism**, key retaining.

## MONOLITH AND EUROMONOLITH

"Monolith" and "Euromonolith" form part of the new generation of very secure and elegant padlocks. The one-piece body, the lock-bolt and the anti-drill plate of the cylinder are treated with the "NIPLOY PROCESS", an innovative chemical nickel-plating process which ensure a high corrosion-resistant level.

"Monolith" and "Euromonolith" guarantee maximum resistance to attack.

- **Mechanism**:
  - ✓ first set of pins, counterpins and springs in inox stainless steel, tempered;
  - ✓ other pins and counterpins in brass;
  - ✓ pin springs and padlock springs in inox stainless steel;
  - ✓ "mushroom" counterpins, anti-picking ("Monolith").
- **High resistance to attack and corrosion** (suitable for roller shutters, gates hasps and double gates, chains etc.).
- **"Programmed breakage"** pull-resistant inserted head.
- **Keys**: supplied with 2 brass-nickel plated keys for "Monolith", with Viro Top Security Profile, 2 flat and reversible keys for "EuroMonolith".
- **Viro Top Security profile**, extremely precise to code: special executions allowed even if product has been purchased since many years ("Monolith"); flat and reversible keys supplied into one sealed envelope with property card for personal identification ("EuroMonolith"). For **Monolith**: versions available with patented profile keys (form trademark) which can only be duplicated by Viro (.PB profile) or versions which can be duplicated only by Viro Authorized Centers (.PV profile).
- **The interchangeable cylinder allows easily all master key systems.**
- **All special executions are possible for "Monolith"; standard KA for "EuroMonolith".**



### MONOLITH

ITEM No.	Body dimensions mm A x B x E	Horizontal and vertical clearance mm F x C	Lock-bolt diameter mm D	Keys Item No.	Unit weight g	Pcs. per pack No.
4143	78 x 62 x 30	28 x 12,5	13	039	850	1
4144	87 x 70 x 30	37 x 20,5	13	039	1015	1



SPARE CYLINDER with accessories for cylinder replacement	ITEM.No.
	4743

For versions with patented profile keys the item code should be followed by: **.PB** or **.PV**

### EUROMONOLITH 2 flat and reversible keys supplied into one sealed envelope with property card for personal identification.

ITEM No.	Body dimensions mm A x B x E	Horizontal and vertical clearance mm F x C	Lock-bolt diameter mm D	Keys Item No.	Unit weight g	Pcs. per pack No.
4153	78 x 62 x 30	28 x 12,5	13	063.A	880	1
4154	87 x 70 x 30	37 x 20,5	13	063.A	1035	1



SPARE CYLINDER with accessories for cylinder replacement	ITEM.No.
	4753

For versions with patented profile keys the item code should be followed by: **.PB** or **.PV**

**WESTECH RIGGING SUPPLY**

Call Toll Free: 800-442-7475

Call Us or Visit Our Stores:  
Monday - Friday, 8:00am - 5:30pm Pacific



Distributed By

Visit Us Online at: [www.WestechRigging.com](http://www.WestechRigging.com)

4140 West 11th Avenue  
Eugene, Oregon 97402

2439 McGilchrist St SE  
Salem, Oregon 97302