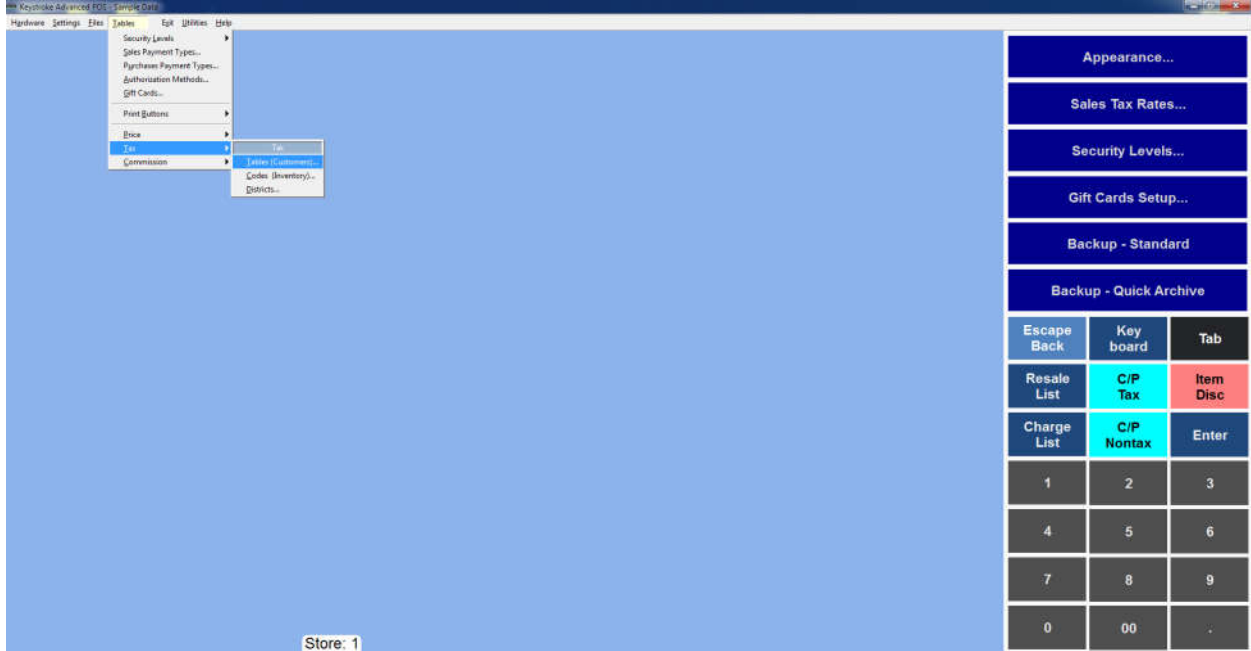
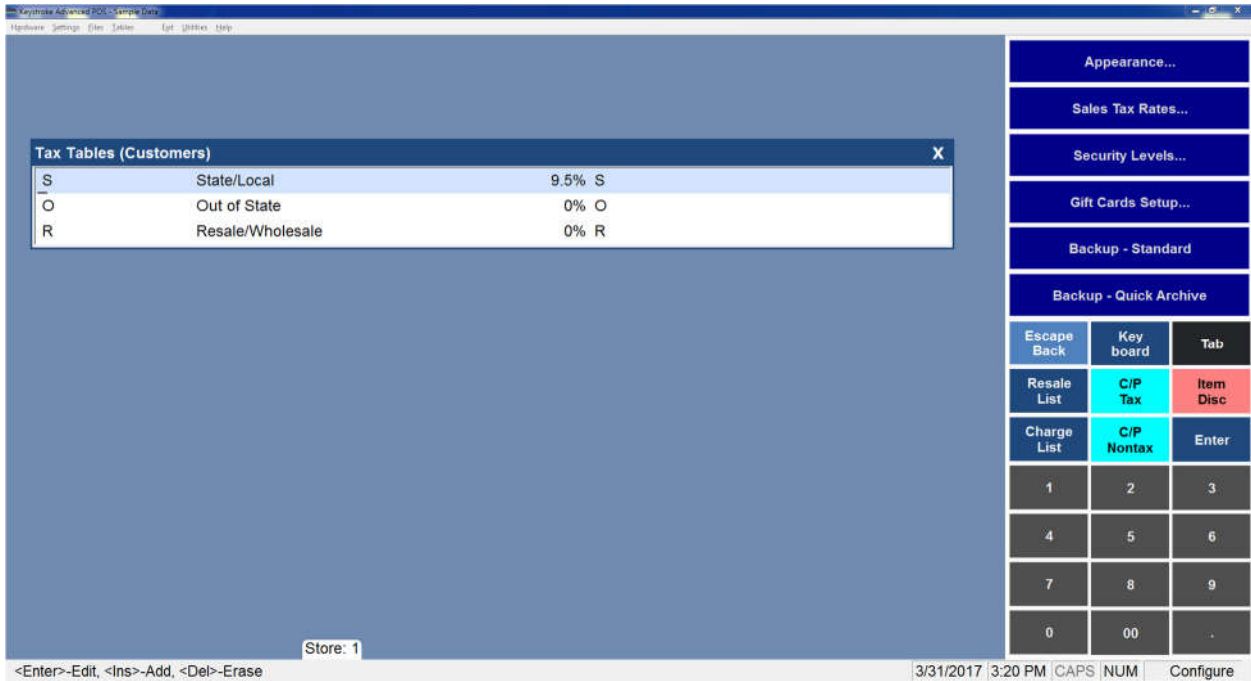


Keystroke Tax Change

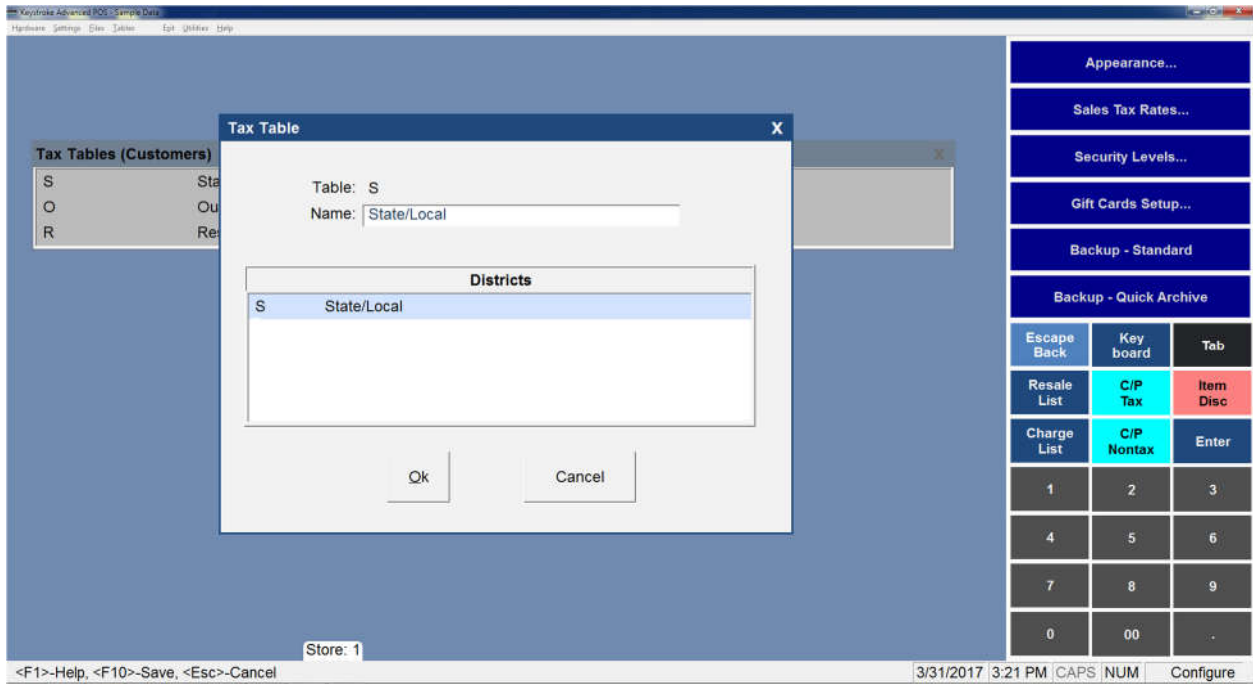
Go to Configuration Manager – Tables – Tax -Tables



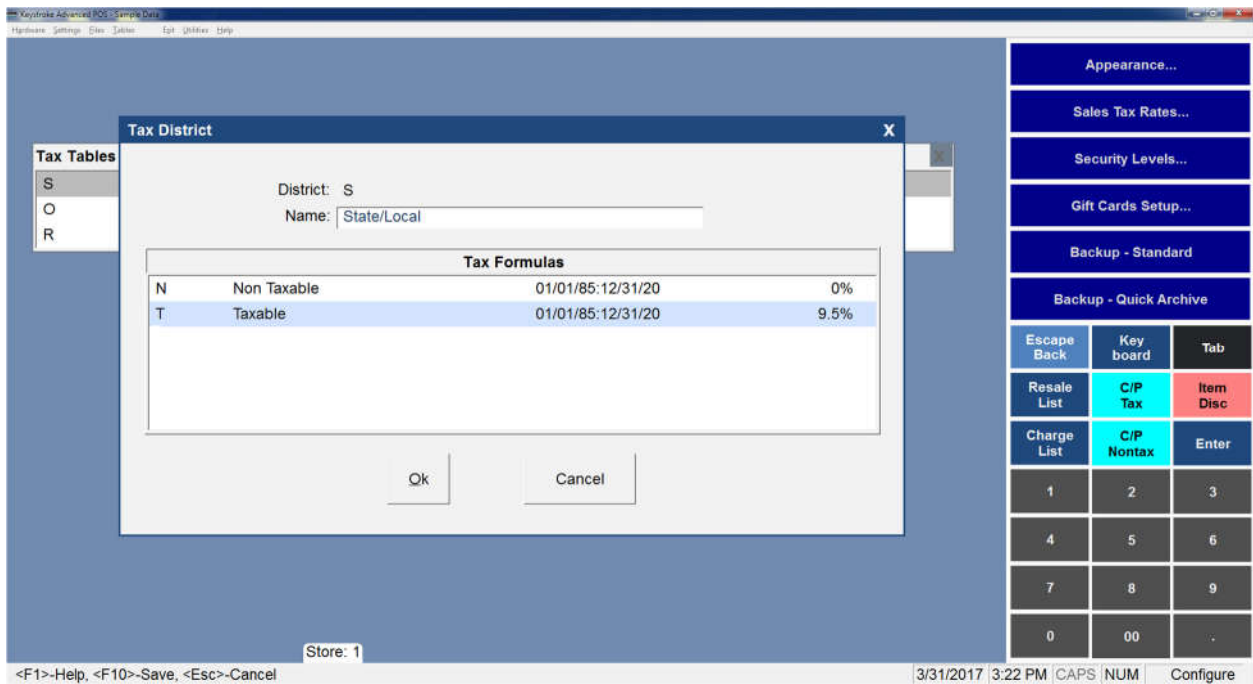
Select S (State/Local) Tax Table



Select S (State/Local) Tax District



Select the current T Tax Formula (note the dates to verify if you have multiple T formulas)



Enter the expiration date of the old tax rate and press OK

State/Local- Tax Formula

Tax Code: T = Taxable

Tax Amount: 9.5 %

Based On - Price

Date Range

Start: 01/01/85

End: 03/31/17

Minimum Purchase: 0

Based On - Line Qty

Subtract Minimum Purchase Amount

Included in Price

Round on Each Item

Always Round Up

Taxable by other Formulas

Allow SubTotal on Receipts

Ignore Non-Taxable Pay Flag

OK Cancel

Store: 1

<F1>-Help, <F10>-Save, <Esc>-Cancel

3/31/2017 3:23 PM CAPS NUM Configure

Press F2 or Insert on your keyboard to add a new Tax Formula. Enter in your new tax amount and the starting date of the new tax rate. Press OK or F10 to save/exit from the tax tables.

State/Local- Tax Formula

Tax Code: T = Taxable

Tax Amount: 10 %

Based On - Price

Date Range

Start: 04/01/17

End: 12/31/30

Minimum Purchase: 0

Based On - Line Qty

Subtract Minimum Purchase Amount

Included in Price

Round on Each Item

Always Round Up

Taxable by other Formulas

Allow SubTotal on Receipts

Ignore Non-Taxable Pay Flag

OK Cancel

Store: 1

<F1>-Help, <F10>-Save, <Esc>-Cancel

3/31/2017 3:26 PM CAPS NUM Configure