

ANVIL®

884L ANVIL LADIES' LIGHTWEIGHT LONG-SLEEVE T-SHIRT



Features:

- 4.5 oz., preshrunk 100% combed ringspun cotton; 30 singles
- Heathers-60/40 poly/combed ringspun cotton
- Heather Grey - 90/10 combed ringspun cotton/poly
- shoulder-to-shoulder tape
- double-needle bottom hem; double-needle sleeve
- Oeko-Tex® Standard 100 Certified; features a TearAway label
- missy semi-fitted contoured silhouette with sideseams; seamed collar

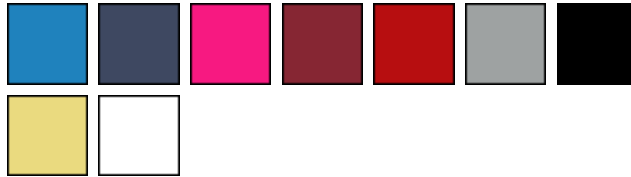


Featured Color: BLACK

Sizes: S-2XL

MSRP: Call for pricing

9 Available Colors



884L ANVIL LADIES' LIGHTWEIGHT LONG-SLEEVE T-SHIRT

Product Specifications

	S	M	L	XL	2XL	-	-	-	-	-
BODY LENGTH	25.5	26	27	28	28.5	-	-	-	-	-
BODY WIDTH	17.25	19.25	21.25	23.25	25.25	-	-	-	-	-

How to Measure

BODY LENGTH: Lay garment flat (face down). Measure from center back neckline seam straight down to bottom of the front hem.

BODY WIDTH: Lay garment flat. 1" below the armhole flat measure the garment across the chest.