

Blue Sky Latch Installation:

Step 1.

Locate two existing rivets on door holding stock latch in place. Drill these out and remove old latch.

Step 2.

Install Blue Sky rubber catch:

Using supplied hardware

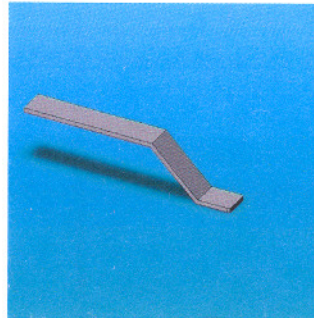
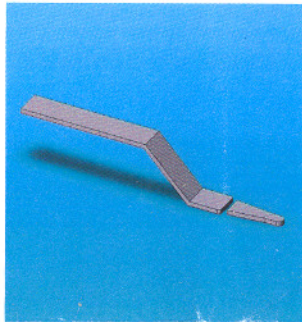
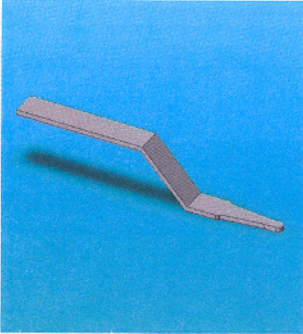
Screw MS24693S28 6-32 X1/2"

Nut AN365-632A MS21044N06 6-32 Elastic stop nut

Washer AN960-0

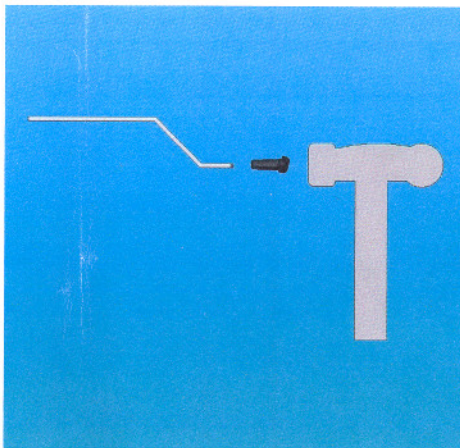
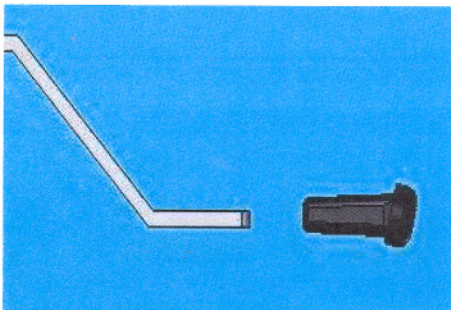
Step 3.

Cut the tip off the door stem using a hack saw. Use a file to debur your cut.



Blue Sky Stem adapter is designed to press fit on to the door stem. Using a small hammer TAP the adapter into place.

Proper Alignment as pictured.



Step 4.

Using the loosen the adjustment screw on the door stem and align with the Blue Sky rubber catch.

Your done!