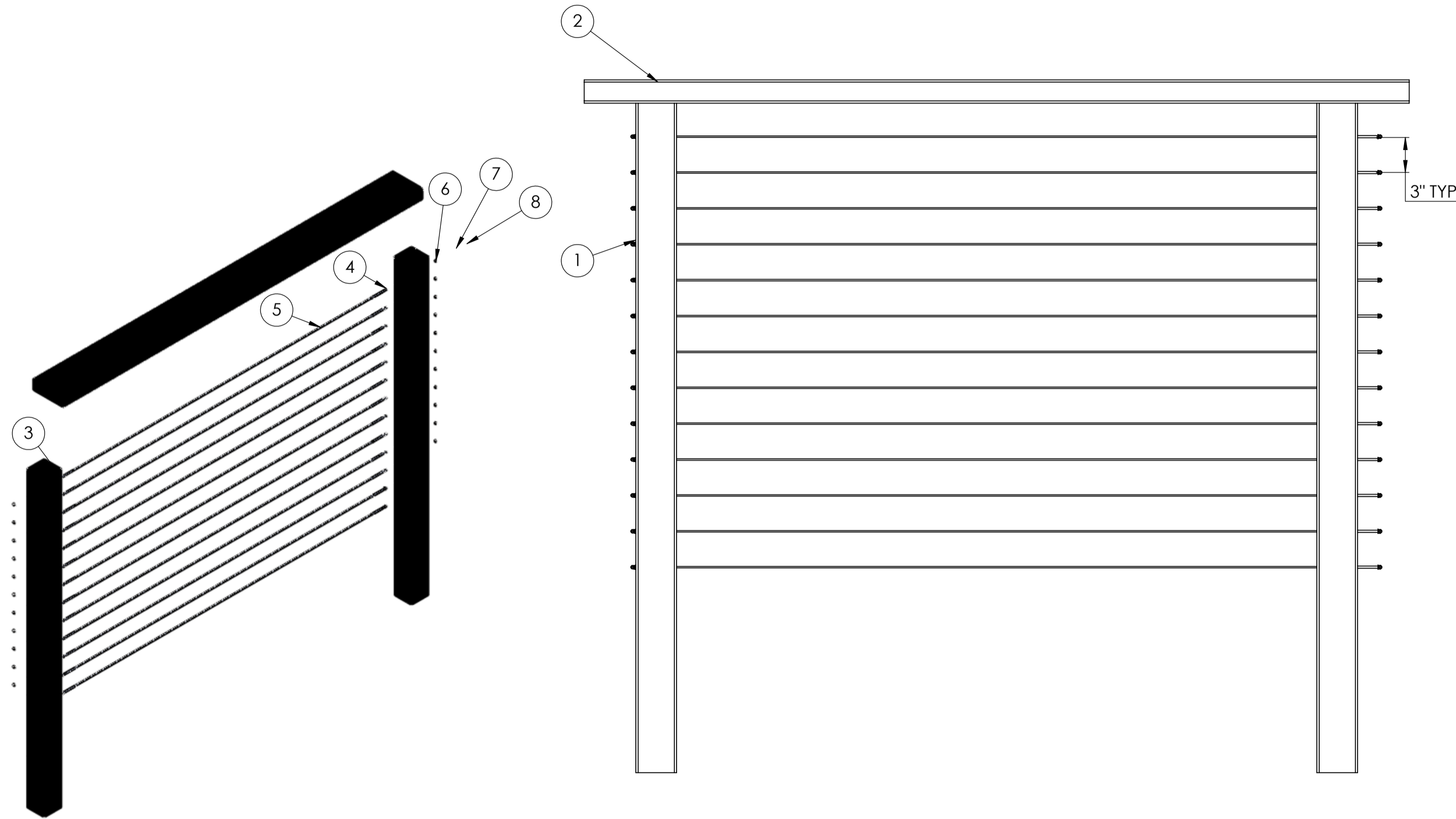
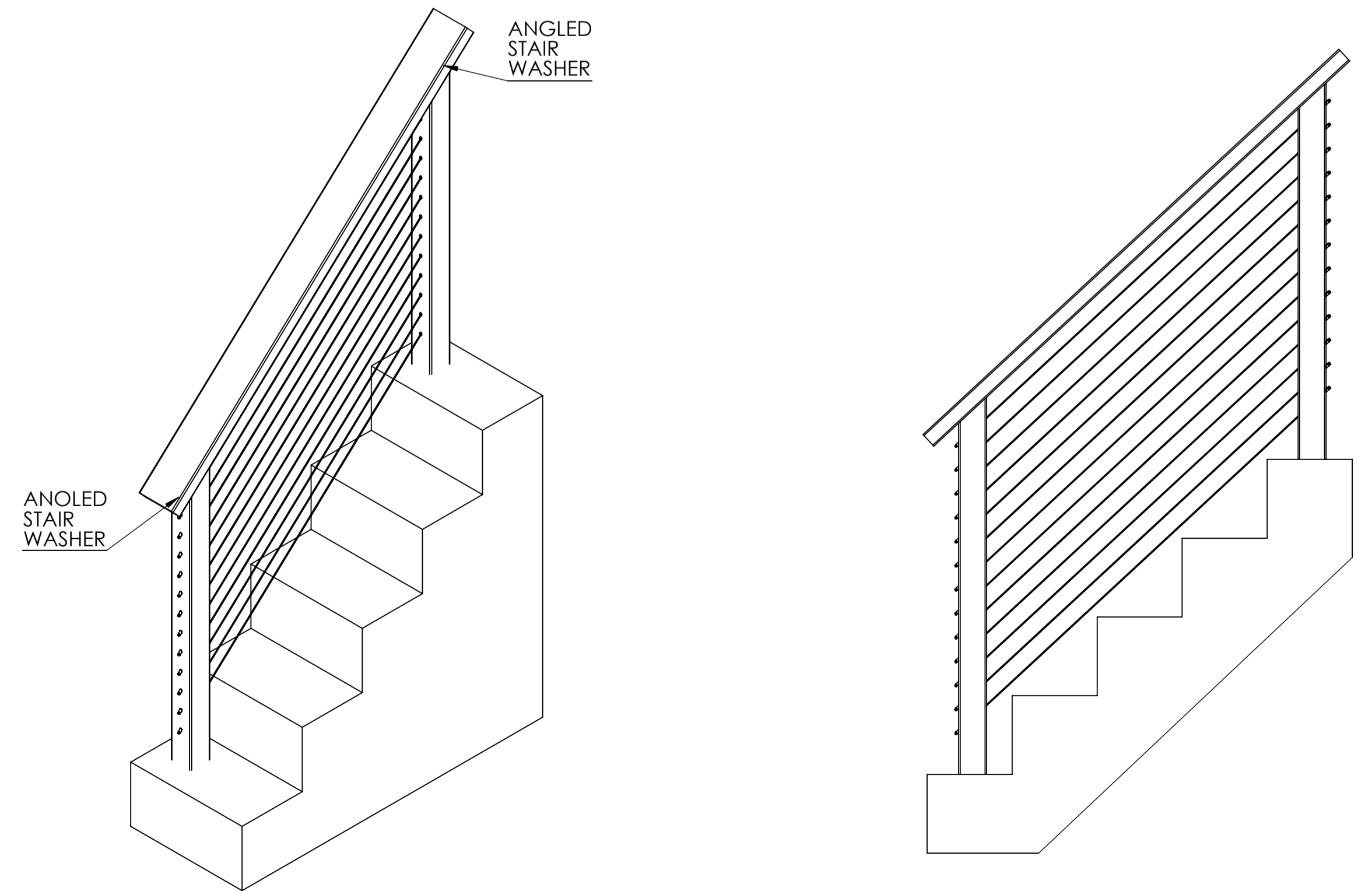


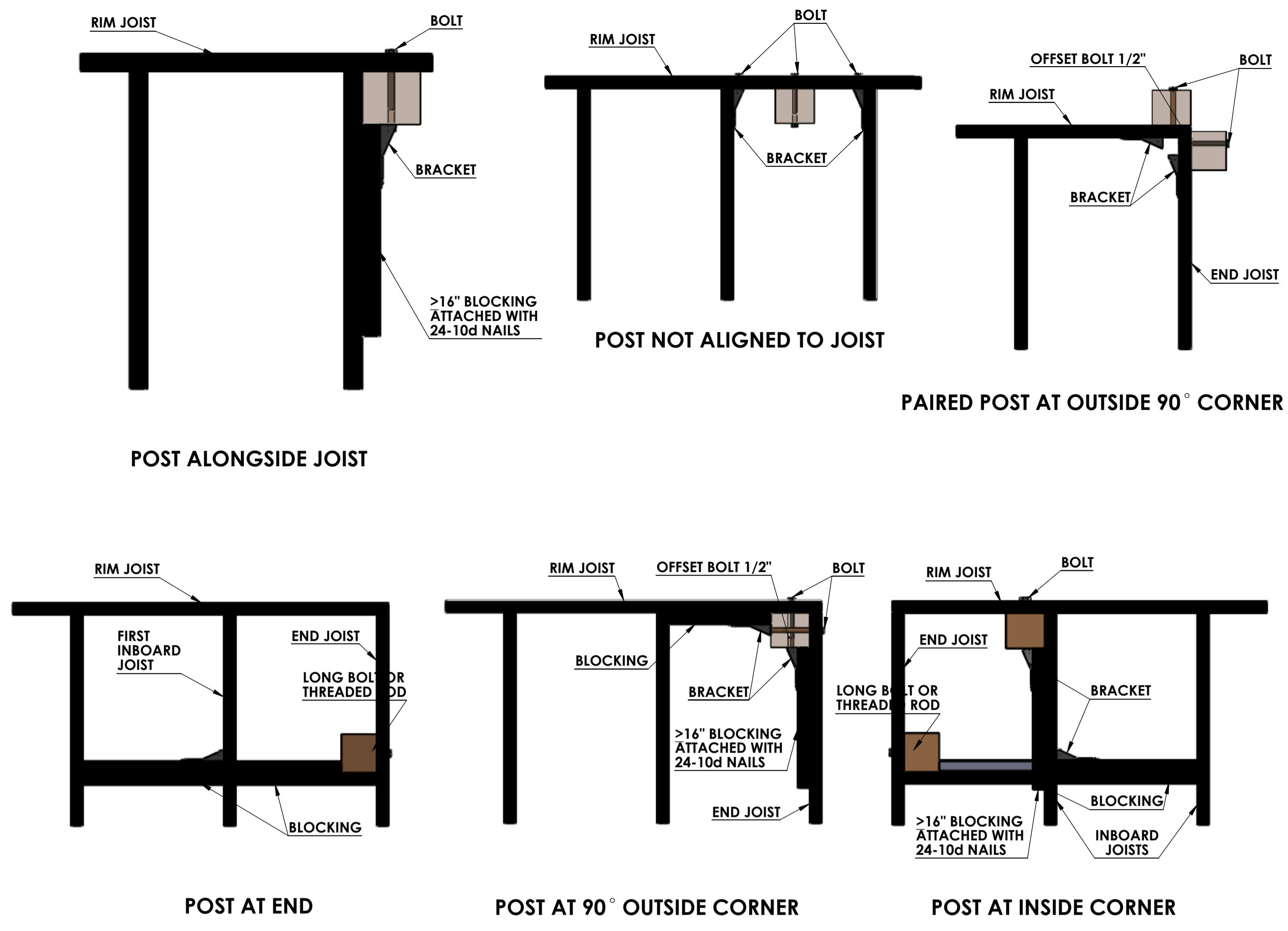
ITEM NO.	PART NUMBER	DESCRIPTION	QTY.
1	07-001-01	IPE TERMINAL WOOD POST	2
2	07-003-01	IPE TOP RAIL	1
3	01-008S-01 OR 01-028S-01	FIELD THREADED TERMINAL	13
4	01-0008-01 OR 01-028-01	FIELD THREADED TENSIONER	13
5	Stainless Cable	1/8" or 3/16" DIA.	13
6	Stainless Washer	STD	26
7	Stainless Hex Nut	STD	26
8	Stainless Acorn Nut	STD	26



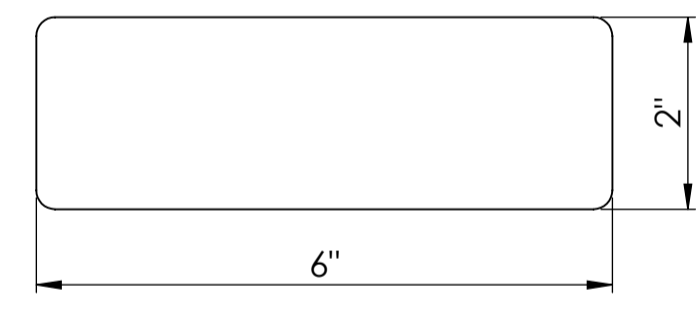
LEVEL 42" STANDARD GUARD RAILING



STAIRS 42" STANDARD GUARD RAILING

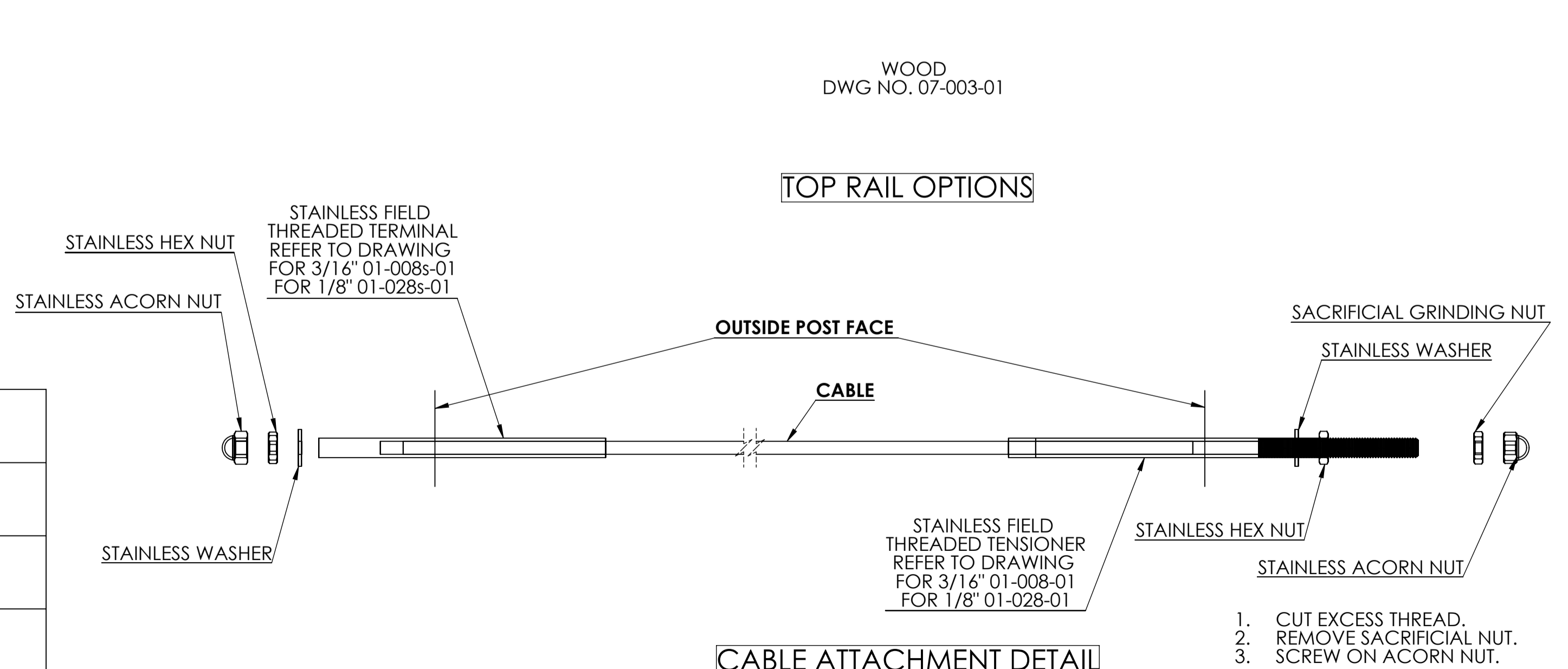


TYPICAL MOUNTING OPTIONS



WOOD
DWG NO. 07-003-01

TOP RAIL OPTIONS



CABLE ATTACHMENT DETAIL

REV	DATE	DESCRIPTION OF CHANGE	ECN	BY.	APPR
REVISIONS					
		Stainless Cable & Railing TOLERANCES .XX ±.01 UNLESS OTHERWISE SPECIFIED .XXX ±.005 ANGULAR ±0.5° FRACTIONAL ±1/32	THIS DRAWING IS THE PROPERTY OF STAINLESS CABLE & RAILING AND IS PROTECTED UNDER COPYRIGHT LAW AS AN UNPUBLISHED WORK. IT MAY NOT BE PUBLISHED, COPIED OR REPRODUCED WITHOUT EXPRESS WRITTEN PERMISSION FROM SC&R		TITLE : CABLEVIEW® WOOD 42" RAILING
DRAWN BY: PA		DATE: **	PROJECT: **	DRG NO.: CV- W 42	SHEET 1 OF 1