

---

Samsung ER-650 Series

***PC Utility***  
**User's Manual**

All specifications are subject to change without notice.

Version Prelim  
©2010, CRS, Inc.

# **CRS, Inc.**

## **Limited Warranty and Disclaimers of Warranty**

This manual has been developed by CRS, Inc. It is intended for the use of its customers and service personnel and should be read in its entirety before attempting to install, use or program the product(s).

Nothing contained in this manual shall be deemed to be, and this manual does not constitute, a warranty of, or representation with respect to, the product or any of the products to which this manual applies. This manual is subject to change without notice and CRS, Inc. has no obligation to provide any updates or corrections to this manual. Further, CRS, Inc. also reserves the right, without prior notice, to make changes in equipment design or components as it deems appropriate. No representation is made that this manual is complete or accurate in all respects and CRS, Inc. shall not be liable for any errors or omissions contained in this manual. In no event shall CRS, Inc. be liable for any incidental or consequential damages relating to or arising out of the use of this manual. This document contains proprietary information that is protected by copyright. All rights are reserved. No part of this document may be photocopied or reproduced without prior written consent of CRS, Inc.

### **NOTICE**

IF ANY WARRANTY IS EXTENDED TO YOU WITH REGARD TO THE PRODUCT(S) TO WHICH THIS MANUAL APPLIES, IT IS A WARRANTY FROM THE ENTITY OR INDIVIDUAL FROM WHOM YOU DIRECTLY PURCHASED THE PRODUCT(S).

SUBJECT TO THE FOREGOING, UNLESS YOU ARE A DIRECT END USER CUSTOMER OF CRS, INC., CRS, INC. DOES NOT EXTEND TO YOU ANY EXPRESS WARRANTY OR ANY IMPLIED WARRANTY AND EXPRESSLY DISCLAIMS ANY IMPLIED WARRANTY OF MERCHANTABILITY, FITNESS FOR USE, OR FITNESS FOR ANY PARTICULAR PURPOSE, OR ANY WARRANTY OF NON-INFRINGEMENT OF INTELLECTUAL PROPERTY RIGHTS IN CONNECTION WITH THE PRODUCT(S) OR ANY SOFTWARE, DRIVERS, OR PROGRAMMING PRODUCT, WHETHER EMBEDDED IN PRODUCT(S) OR PROVIDED AS A SEPARATE PROGRAM, OR USED IN CONJUNCTION WITH THIS/THESE PRODUCT(S). CRS, INC. SPECIFICALLY DOES NOT WARRANT THAT THE OPERATION OF ANY DRIVERS, SOFTWARE, OR PROGRAMMING PRODUCTS LICENSED HEREUNDER, WHETHER EMBEDDED IN PRODUCTS OR PROVIDED AS SEPARATE PROGRAMS, SHALL BE UNINTERRUPTED OR ERROR FREE OR THAT FUNCTIONS CONTAINED IN SUCH DRIVERS, SOFTWARE OR PROGRAMMING PRODUCTS SHALL OPERATE IN COMBINATION(S) WHICH MAY BE SELECTED FOR USE BY YOU OR OTHERWISE MEET YOUR REQUIREMENTS.

CRS, Inc. is not responsible for any damages or loss, either direct, indirect, special, incidental or consequential, which you may experience as a result of your purchase or use of the product(s). Your sole remedy in the event that you encounter any difficulties with the product(s) is against the entity or individual from whom you purchased the product(s).

Revision 2.0 - April 1, 2005

# Contents

<b>Introduction</b>	<b>3</b>
About the ER-650 PC Utility.....	3
<b>Getting Started</b>	<b>5</b>
Setting the ER-650 RS-232C Port.....	5
Preparing the ER650 Series for Communicatons .....	6
Installing the Utility.....	6
Starting the PC Utility .....	7
Store Settings.....	8
<b>Upload/Download Programs</b>	<b>11</b>
UpProgram .....	11
DownProgram .....	12
<b>Edit Programs</b>	<b>13</b>
Procedures .....	13
Program Edit Screens .....	14
<b>Appendix</b>	<b>21</b>
Cabling Diagrams .....	21



# Introduction

---

## About the ER-650 PC Utility

The ER-650 Series PC Utility provides basic PC communication functions for Samsung ER-650 Series ECRs: ER-650, ER-650R, and ER-655II. This utility was designed primarily as a dealer tool - to save, edit, and download programs.

---

**Note: The ER-650 Series PC Utility supports only direct onsite connection to the ECR. Modem communications are not supported.**

---

### ER-650 PC Utility Features

- Support Multiple Stores
- Save and Load ECR programs
- Edit ECR programs

---

**Note: The ER-650 Series PC Utility was developed to work best with a screen resolution of at least 1024 x 768 pixels.**

---



# Getting Started

---

## Setting the ER-650 RS-232C Port

At the ER-650/ER-650R/ER-655II, you must select 'PC' as the device that is attached to the RS-232C communications port.

1. At the **SM** control lock position menu, press **8** for RS232C Port 1 programming or **9** for RS232C Port 2 programming. The appropriate **PORT PROGRAM** screen displays:

```
PORT 1 PROGRAM pg1
BAUD RATE          0←
0: 9,600   1:1,200
2: 2,400   3:4,800
4:19,000
PARITY CHECK      0
0:NONE  1:ODD  2:EVEN
DATA BITS(0:8  1:7)0
```

2. Press **PAGE DOWN** to view page 2 of the RS232C port program:

```
PORT 1 PROGRAM pg2
STOP BITS(0:1  1:2)0←
DEVICE FUNCTION  0
-----
0:NONE  1:PC    2:SCL
3:RJ    4:RP    5:LT
6:SCAN  7:COIN  8:LIQ
9:POLE  10:EFT  11:PDC
```

3. Press **ENTER** to select the Device Function field. Press **"1"** (the value for PC) and press the **ESC** key to exit and save changes.

---

**Note: If both ports are set to the same device, Port 1 runs first. For example, if you wish to use Port 2 for PC, Port 1 must be set to another device, or None.**

---

---

## Preparing the ER650 Series for Communicatons

The register must be ready for communications:

- Connect the register directly to the PC with the appropriate cable. See “Cabling Diagrams” on page 21.
- The register power must be on.
- A clerk must be signed on.
- Turn the key lock to the **Z** position.
- Enter **2** (enters PC communications).
- Press **Clear** when communication is complete.

---

## Installing the Utility

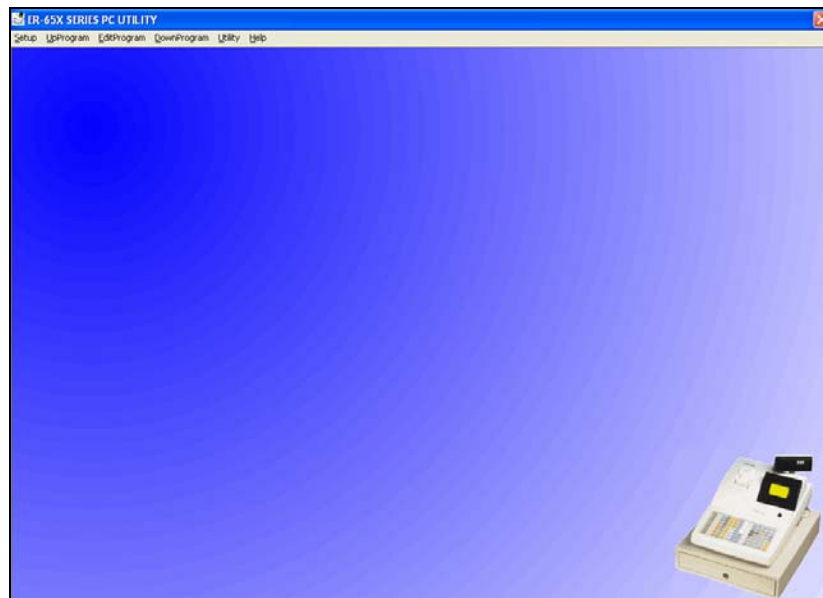
1. From Windows Explorer, locate the file: setup650.exe. Double click the file to open the installation dialog box.
2. Follow the instructions to complete the installation.



---

## Starting the PC Utility

1. Choose **Start, Programs, SHC PC Utility** and then **650PC**. The Store Setting dialog box displays.
2. Select the store you wish to open and click the **Close** button. The **ER-650 Series PC Utility** window opens.



---

## Store Settings

There is no limit to the number of stores. When you start the utility for the first time, enter the store name and select the model, PC port and baud rate.

### *The Store Setting Dialog Box*

STORE SETTING

liquor

MODEL

ER-650  
 ER-655  
 ER-650R  
 ER-655R

IRC SETTING

REGISTER 1  
 REGISTER 2  
 REGISTER 3  
 REGISTER 4  
 REGISTER 5  
 REGISTER 6  
 REGISTER 7  
 REGISTER 8

PORT

COM1  COM6  
 COM2  COM7  
 COM3  COM8  
 COM4  COM9  
 COM5

BAUDRATE

9600  
 19200

CLOSE

## Memory Allocation

After making store settings for the first time, select **CLOSE**. The Memall (memory allocation) dialog displays as shown on the right.

Memory allocation is not uploaded or downloaded. At the PC Utility, you must set the memory allocation for each store manually. (You can read the register memory allocation: At the **SM** control lock position menu, press **5** for Memory Allocation programming. The **MEMORY ALLOCATION** screen displays.)

- ◆ Set the memory allocation on the PC utility to match the ER-650 Series ECR. .

Memall

MEMORY SIZE 999999

# OF PLU 1000

PLU PRICE LEVEL 1

# OF CLERK 10

# OF GROUP 20

# OF EJ LINE 1100

# OF CHECK 20

# OF SOFT CHECK 50

REGISTER # 1

STORE # 0

CHECK TYPE HARD

VERSION Verison 1.00

SAVE CANCEL

## Selecting a Store

- ◆ Select the working store when you start the utility.
- ◆ To change the working store after the utility has been started, choose **Setup Store** from the **Setup** menu and select a different store from the drop-down list box.

## Adding a Store

- ◆ Choose **Add Store** from the **Setup** menu. At the **Add Store** dialog, enter the store name and click **OK**. At the **Store Setting** dialog, select the model, PC port, baud rate and click the **Close** button.

## Removing a Store

- ◆ Choose **Remove Store** from the **Setup** menu. At the **Remove Store** dialog, select the store name to remove and click **OK**.



# Upload/Download Programs

---

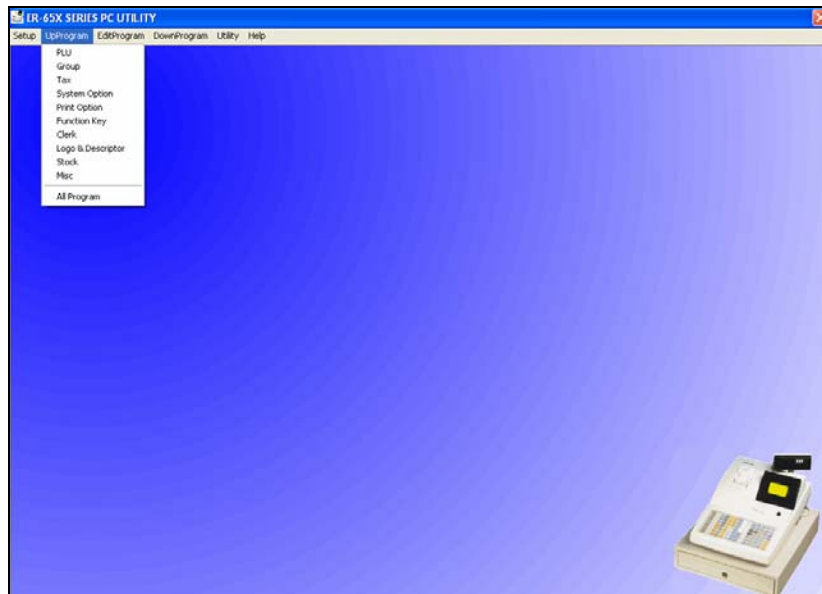
## UpProgram

---

**You must upload a program before program edit functions are allowed.**

---

- ◆ Select the program segment you wish to upload from the **UpProgram** menu, or select **AllProgram** to upload the entire register program



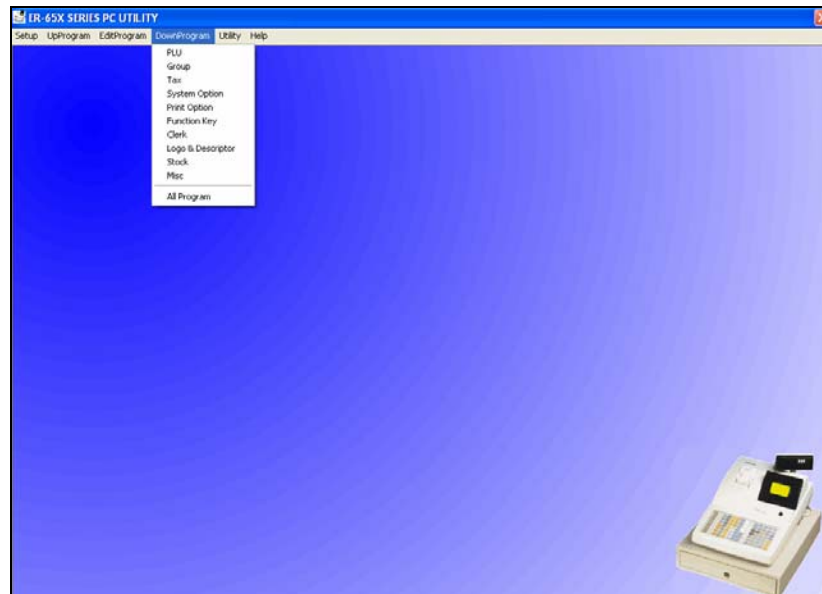
---

## DownProgram

The Memory Allocation for the Store Setting must match the memory allocation of the register that is being downloaded.

Downloading a program will overwrite the existing register program.

- ◆ Select the program segment you wish to download from the **DownProgram** menu, or select **All Program** to download the entire register program (not including PreAmble and PostAmble images, that are downloaded separately.)



# Edit Programs

---

## Procedures

With the exception of memory allocation, all register programs can be edited with the PC Utility. You will find options neatly organized on dialog boxes, making register option programming on the PC Utility more efficient than programming options at the register.

---

▪ **You must upload a program before program edit functions are allowed.**

1. To edit a program, choose the appropriate program from the **EditProgram** menu. An example of each program dialog box is shown in this chapter.
2. After edits, click **Save** to exit and save changes, or click **Cancel** to exit without saving changes.

### Tips

- Each Store's data, including both uploaded program files and polled report files, is located in a separate folder under the ER-650PC folder.
- If you are building a new register program based upon an existing store, you can copy an existing store's program files to a new store folder. It is often more efficient to modify an existing program than to start over with a new one.
- If you are building a large PLU file with identical (or similar) options for each PLU, you may find the from/to PLU programming at the register useful. For example, you can first program the identical options for a range of PLUs at the register. Then upload the PLU program with the utility. Use the utility to program descriptors, prices and make adjustments to each PLU individually. Finally, you can download the completed program to the register.
- If you have questions regarding the meaning of ECR features, refer the appropriate *ER-650 Program and Operation* manual for an explanation of your program options.

# Program Edit Screens

## PLU

**PROGRAMMING PLU - Right click to delete an item.**

CODE	DESCRIPTOR	PRICE1
1	Hamburger	6.99
2	Cheeseburger	7.49
3	Bacon CB	7.99
4	French Fries	2.25
5	PLU5	0.00
6	PLU6	0.00
7	PLU7	0.00
8	PLU8	0.00
9	PLU9	0.00
10	PLU10	0.00
11	PLU11	0.00
12	PLU12	0.00
13	PLU13	0.00
14	PLU14	0.00
15	PLU15	0.00
16	PLU16	0.00
17	PLU17	0.00
18	PLU18	0.00
19	PLU19	0.00
20	PLU20	0.00
21	PLU21	0.00
22	PLU22	0.00
23	PLU23	0.00
24	PLU24	0.00
25	PLU25	0.00
26	PLU26	0.00
27	PLU27	0.00
28	PLU28	0.00
29	PLU29	0.00
30	PLU30	0.00
31	PLU31	0.00
32	PLU32	0.00
33	PLU33	0.00
34	PLU34	0.00
35	PLU35	0.00
36	PLU36	0.00
37	PLU37	0.00

TOTAL PLU# : 80

PLU CODE:

DESCRIPTOR:

GROUP:

PRICE1:

PRESET  PRESET OVERRIDE

TAXABLE BY:  1  2  3  4

FOOD STAMP ELIGIBLE  NEGATIVE ITEM

HASH ITEM  SINGLE ITEM

NON ADD # COMP.  GALLONAGE ITEM

INVENTORY ITEM  DISABLE

SCALABLE  AUTO SCALE

CONDIMENT ITEM  CONDIMENT COMP.

PRINT ON RECEIPT  PRINT ON DISPLAY

PRINT PRICE ON RECEIPT  PRINT ON CHECK

DISABLE PROMO  PRINT PRICE ON CHECK

COUNTER NOT RESET

PRESET OVERRIDE IN MGR MODE

LINK PLU CODE:

AUTO TARE:

PRICE2:  PRICE3:

PRICE4:  PRICE5:

Buttons: SAVE & EXIT, SAVE & NEW, CANCEL

## Groups

**GROUP PROGRAMMING**

GRO...	DESCRIPTOR
1	Den's Group
2	GROUP 2
3	GROUP 3
4	GROUP 4
5	GROUP 5
6	GROUP 6
7	GROUP 7
8	GROUP 8
9	GROUP 9
10 ...	GROUP 10
11 ...	GROUP 11
12 ...	GROUP 12
13 ...	GROUP 13
14 ...	GROUP 14
15 ...	GROUP 15
16 ...	GROUP 16
17 ...	GROUP 17
18 ...	GROUP 18
19 ...	GROUP 19
20 ...	GROUP 20

**GROUP 1**

DESCRIPTOR:

ADD TO GROUP TOTAL:

SEND TO KP:

KP PORT:  PORT #1:  PORT #2:  RECEIPT:

PRINT RED ON KP:

SEND TO KV:

KV GROUP # (0-8):

KV COLOR (0-8):

AGE VERIFICATION (0-5):

GIFT CARD(1-2):

Buttons: SAVE, CANCEL



# Tax

**TAX**

TAX1

ADD ON    RATE

TAX TABLE

VAT

GST TAXTABLE

TAX 1

TAX 2

TAX 3

# System Option

**SystemOption**

<input checked="" type="checkbox"/> Beeper Active <input type="checkbox"/> Real Clerk Key Clerk Entry <input type="text" value="Push"/> Clerk Assigned when Clerk key is pushed <input type="text" value="1"/> Clerk is <input type="text" value="Stay down"/> <input checked="" type="checkbox"/> Drawer need to be shut to operate <input type="checkbox"/> Activate Drawer open alarm <input checked="" type="checkbox"/> Allow Post Tender Seconds to allow Drawer open (1-99) <input type="text" value="30"/> <input checked="" type="checkbox"/> Open Drawer on Post Tender <input type="checkbox"/> Allow Multiple Receipts <input type="checkbox"/> Cash Declaration Req. <input type="checkbox"/> Reset Transaction No. on Z report <input type="checkbox"/> Negative Balance <input type="checkbox"/> Zero Balance <input type="checkbox"/> Reset Grand Total after Z report <input checked="" type="checkbox"/> Open Drawer When reports run <input checked="" type="checkbox"/> Open Drawer during train Mode Decimal Place <input type="text" value="2"/> Date Format <input type="text" value="MDY"/> PIN PAD(0-2) <input type="text" value="0"/>	Modifier <input type="text" value="Pop up after Item"/> % And Tax cal. <input type="text" value="0"/> Split Price Calculation <input type="text" value="Round up at 0.50"/> <input type="checkbox"/> Compulsory Eat-In T-Out D-Thru before tender Hash is <input type="text" value="Non-Add"/> <input checked="" type="checkbox"/> Allow any Clerk <div style="border: 1px solid gray; padding: 2px; margin: 5px 0;">                     Reset Z counter After Z1 report  <input type="checkbox"/> Finan Rpt.    <input type="checkbox"/> Time Rpt.  <input type="checkbox"/> PLU Rpt.    <input type="checkbox"/> Clerk Rpt.  <input type="checkbox"/> Group Rpt.                 </div> <div style="border: 1px solid gray; padding: 2px; margin: 5px 0;">                     Reset Z counter After Z2 report  <input type="checkbox"/> Daily Sales Report                 </div> <input checked="" type="checkbox"/> Printer Paper Sensor Active <input type="checkbox"/> Deactivate Split Pricing <input type="checkbox"/> Allow Direct Mult Inventory Count Program <input type="text" value="Counter Replace Curr. Lvl"/>	Disable Price level key <input type="checkbox"/> Level 1 <input type="checkbox"/> Level 2 <input type="checkbox"/> Level 3 <input type="checkbox"/> Level 4 <input type="checkbox"/> Level 5 Price Level <input type="text" value="Pop up after Item"/> <input type="checkbox"/> Electronic Journal <input checked="" type="checkbox"/> Prompt Operator when EJ Buffer is full <input type="checkbox"/> Stop Operation when EJ Buffer is full <input type="checkbox"/> Send Only Negative Entries to E.J <input type="checkbox"/> Send Reset Report to E.J <input type="checkbox"/> Direct mult More than one digit Tender Validation <input type="text" value="AMT of sale"/> <input type="checkbox"/> Allow price level only MGR MODE Embedded Price Bar Code type <input type="text" value="0"/> <input type="checkbox"/> Display add price of linked items <input checked="" type="checkbox"/> Allow sale with 0 stock <input type="checkbox"/> Allow SWEDISH round on SUBT <input type="checkbox"/> Allow SWEDISH round on CASH <input checked="" type="checkbox"/> Allow Z stock rpt <input type="checkbox"/> PGM DESC. BY CODE EFT DRAFT <input type="text" value="DATATRAN"/> MCR CONNECT <input type="text" value="DATATRAN"/>
---	--	---

# Print Option

**PrintOptionDown**

<input checked="" type="checkbox"/> Print Media Totals on Clerk Report	<input type="checkbox"/> Print Gross total	<input type="checkbox"/> Consolidation on Check Track
<input checked="" type="checkbox"/> Print Tax Symbol	<input checked="" type="checkbox"/> On X Report <input checked="" type="checkbox"/> On Z Report	Volume Unit <input type="text" value="GAL"/>
<input checked="" type="checkbox"/> Print VD Mode and Return on Report	<input type="checkbox"/> Print Subtotal Without Tax	<input checked="" type="checkbox"/> Print Preamble Message on Receipt
<input type="checkbox"/> Print Audaction on Report	Tax Amount Is <input type="text" value="ITEMIZE"/>	<input checked="" type="checkbox"/> Print Postamble Message on Receipt
<input checked="" type="checkbox"/> Skip Zero Totals on Financial Report	<input checked="" type="checkbox"/> Print Tax Amount	<input type="checkbox"/> Print Preamble on the Guest Check
<input checked="" type="checkbox"/> Skip Zero Totals on Clerk Report	<input type="checkbox"/> Print Taxable total	<input type="checkbox"/> Print Postamble on the Guest Check
<input type="checkbox"/> Print Clerk Report After Finan. Rpt.	<input type="checkbox"/> Print Tax % Rate	<input checked="" type="checkbox"/> AVG Item / Cust
<input type="checkbox"/> Print Sale Item No.	<input type="checkbox"/> VAT Breakdown	<input checked="" type="checkbox"/> AVG \$ / Cust
<input type="checkbox"/> Print PLU with Zero Totals on Report	<input type="checkbox"/> Print Train mode title in Training Mode	<input type="checkbox"/> Buffer Receipt issue when Rec is on
<input type="checkbox"/> Print Subtotal when pressed	Currency Symbol	<input type="checkbox"/> Priority Print by Group on KP / KV
<input type="checkbox"/> Print % of sales on PLU Report	Conv # 1 <input type="text" value=""/>	<input type="checkbox"/> Print PLU # on Receipt
<input checked="" type="checkbox"/> Print Cons.No.	Conv # 2 <input type="text" value=""/>	E.J Port (0 / 1 / 2) <input type="text" value="0"/>
<input checked="" type="checkbox"/> Print Date <input checked="" type="checkbox"/> Print Time	Conv # 3 <input type="text" value=""/>	Report Port (0 / 1 / 2) <input type="text" value="0"/>
<input checked="" type="checkbox"/> Print Machine No.	Conv # 4 <input type="text" value=""/>	Print E.J Form <input type="text" value="Oldest"/>
<input checked="" type="checkbox"/> Print Clerk Name		<input type="checkbox"/> Not Print when Polling Reports
Home Currency Symbol <input type="text" value="\$"/>	<input checked="" type="checkbox"/> Print KP Order # on Receipt	<input type="checkbox"/> Print PLU # on PLU Reports
<input checked="" type="checkbox"/> Print Z Counter	<input type="checkbox"/> Print Price on KP	Grand Total Is <input type="text" value="Gross"/>
<input checked="" type="checkbox"/> Print Receipt when Sign On/Off	<input checked="" type="checkbox"/> Send to KP in VOID MODE	<input type="checkbox"/> Send Order to KP at Subtotal
<input type="checkbox"/> Print Grand total	<input type="checkbox"/> Send to KP in TRAIN MODE	<input type="checkbox"/> Print Date on SERV on Hard Check
<input checked="" type="checkbox"/> On X Report <input checked="" type="checkbox"/> On Z Report	<input type="checkbox"/> Combine like Items on KP	<input type="checkbox"/> Print Whole Card No.
		<input type="checkbox"/> Print Expire Date
		Copy of Datatran Receipt <input type="text" value="1"/>

# Function Key

**FuncKey**

Function Key

- NOSALE
- % 1
- % 2
- % 3
- % 4
- % 5
- ADDCHK
- CANCEL
- CASH
- ~V~1~S~A
- CHARGE2
- CHARGE3
- CHARGE4
- CHARGE5
- CHARGE6
- CHARGE7
- CHARGE8
- CHKCASH
- CHKENDOR
- CHECK
- CHECK #
- CONV1
- CONV2
- CONV3
- CONV4
- DVTHR
- EATIN
- ERRCORR
- F/S SUB
- F/S TEND

**NOSALE**

DESCRIPTOR 1

DESCRIPTOR 2

KEY DISABLE  UNDER MGR CONTROL

INHIBIT NO SALE AFTER NON-ADD #

ENFORCE# ENTRY AT START OF SALE

PRINT ON N/S

NON-ADD# PROHIBIT

COMP. NON-ADD # MUST MATCH MAX DIGIT

MAX DIGIT (0 - 8)

PRINT NON-ADD ON GUEST CHECK

## Clerk

**CLERK**

CLERK#	DESCRIPTOR
1	Kelly S.
2	Bailey S.
3	CLERK 3
4	CLERK 4
5	CLERK 5
6	CLERK 6
7	CLERK 7
8	CLERK 8
9	CLERK 9
10	CLERK 10

CLERK 1

DESCRIPTOR

CLERK CODE

DRAWER ASSIGN(0-2)

## Logo/Descriptors

**LogoDesc**

PREAMBLE	ENDORSEMENT MESSG	FINANCIAC REP MESSG	CLERK REP MESSG
<p>Come to the Schwab Diner</p> <p>Try the Rib's</p> <p>Friday Night's are All you</p> <p>Eat Fried Chicken</p>	<p> </p> <p> </p> <p> </p> <p> </p> <p> </p> <p> </p> <p> </p> <p> </p> <p> </p>	<p>+PLU TTL</p> <p>FINANCIAC REP. ▾</p> <p>+PLU TTL</p> <p>-PLU TTL</p> <p>ADJUST TTL</p> <p>NONTAX</p> <p>TAX1 SALES</p> <p>TAX2 SALES</p> <p>TAX3 SALES</p> <p>TAX4 SALES</p> <p>TAX1</p> <p>TAX2</p> <p>TAX3</p> <p>TAX4</p> <p>XMPT1 SALES</p> <p>XMPT2 SALES</p> <p>XMPT3 SALES</p> <p>XMPT4 SALES</p> <p>EATIN TTL</p> <p>TAKEOUT TTL</p> <p>DRTHRU TTL</p> <p>% 1</p> <p>% 2</p> <p>% 3</p> <p>% 4</p> <p>% 5</p>	<p>NET SALE</p> <p>CLERK REP. ▾</p> <p>NET SALE</p> <p>NONTAX</p> <p>TAX1 SALES</p> <p>TAX2 SALES</p> <p>TAX3 SALES</p> <p>TAX4 SALES</p> <p>TAX1</p> <p>TAX2</p> <p>TAX3</p> <p>TAX4</p> <p>XMPT1 SALES</p> <p>XMPT2 SALES</p> <p>XMPT3 SALES</p> <p>XMPT4 SALES</p> <p>EATIN TTL</p> <p>TAKEOUT TTL</p> <p>DRTHRU TTL</p> <p>% 1</p> <p>% 2</p> <p>% 3</p> <p>% 4</p> <p>% 5</p> <p>CREDIT TAX1 ▾</p>
<p>POSTAMBLE</p> <p>Thank you and Come Ag</p> <p> </p> <p> </p> <p> </p> <p> </p>	<p>DATATRAN MSG</p> <p> </p> <p> </p> <p> </p> <p> </p>	<p style="text-align: center;"><input type="button" value="SAVE"/></p>	<p style="text-align: center;"><input type="button" value="CANCEL"/></p>

## PLU Stock

**PluStock**

CODE	DESCRIPTOR	QUANTITY
1	Hamburger	0.00
2	Cheeseburger	0.00
3	Bacon CB	0.00
4	French Fries	0.00
5	PLU5	0.00
6	PLU6	0.00
7	PLU7	0.00
8	PLU8	0.00
9	PLU9	0.00
10	PLU10	0.00
11	PLU11	0.00
12	PLU12	0.00
13	PLU13	0.00
14	PLU14	0.00
15	PLU15	0.00
16	PLU16	0.00
17	PLU17	0.00
18	PLU18	0.00
19	PLU19	0.00
20	PLU20	0.00
21	PLU21	0.00
22	PLU22	0.00
23	PLU23	0.00
24	PLU24	0.00
25	PLU25	0.00
26	PLU26	0.00
27	PLU27	0.00
28	PLU28	0.00
29	PLU29	0.00
30	PLU30	0.00
31	PLU31	0.00

PLU CODE

QUANTITY

SAVE

CLEAR ALL

CANCEL

## NLU

**NluPgm**

NLU CODE	PLU CODE	PLU NAME
1	1	Hamburger
2	2	Cheeseburger
3	3	Bacon CB
4	4	French Fries
5	25	PLU25
6	6	PLU6
7	7	PLU7
8	8	PLU8
9	9	PLU9
10	10	PLU10
11	11	PLU11
12	12	PLU12
13	13	PLU13
14	14	PLU14
15	15	PLU15
16	16	PLU16
17	17	PLU17
18	18	PLU18
19	19	PLU19
20	20	PLU20
21	21	PLU21
22	22	PLU22
23	23	PLU23
24	24	PLU24
25	25	PLU25
26	26	PLU26
27	27	PLU27
28	28	PLU28
29	29	PLU29
30	30	PLU30
31	31	PLU31

SAVE

CANCEL

# Macro

The screenshot shows the 'MacroPgm' application window. The title bar reads 'Untitled - MacroPgm'. The menu bar includes 'File', 'Edit', 'Macro', 'Function', and 'Help'. The toolbar contains buttons for 'MACRO 1', 'MACRO 2', 'MACRO 3', 'MACRO 4', 'MACRO 5', 'FuncKey LIST', 'CLEAR CURR', 'CLEAR ALL', and 'EXIT'. The main area is titled 'MACRO 1 : MACRO1' and contains a grid of 13 columns and 8 rows of macro keys. To the right of the grid is a vertical list of keyboard keys from F1 to F12, with corresponding numbers 1 through 12.

MACRO 1 : MACRO1														
Hamburger	PLU8	PLU15	PLU22	PLU29	PLU36	PLU43	PLU50	PLU57	PFEED	NOSALE	VOID	ERRCORR	CLERK	
heeseburger	PLU9	PLU16	PLU23	PLU30	PLU37	PLU44	PLU51	PLU58	TAX1	PAGEUP	YESNO	AGEDOWN	ADDCHK	
Bacon CB	PLU10	PLU17	PLU24	PLU31	PLU38	PLU45	PLU52	PLU59	LEVEL1	CLEAR	PLU	@/FOR	FUNCLK1	
French Fries	PLU11	PLU18	PLU25	PLU32	PLU39	PLU46	PLU53	PLU60	LEVEL2	7	8	9	FUNCLK2	
	PLU25	PLU12	PLU19	PLU26	PLU33	PLU40	PLU47	PLU54	PLU61	≈ 1	4	5	6	CHECK
	PLU6	PLU13	PLU20	PLU27	PLU34	PLU41	PLU48	PLU55	PLU62	≈ 2	1	2	3	SUBTOTAL
	PLU7	PLU14	PLU21	PLU28	PLU35	PLU42	PLU49	PLU56	PLU63	MACRO1	0	00	.	CASH

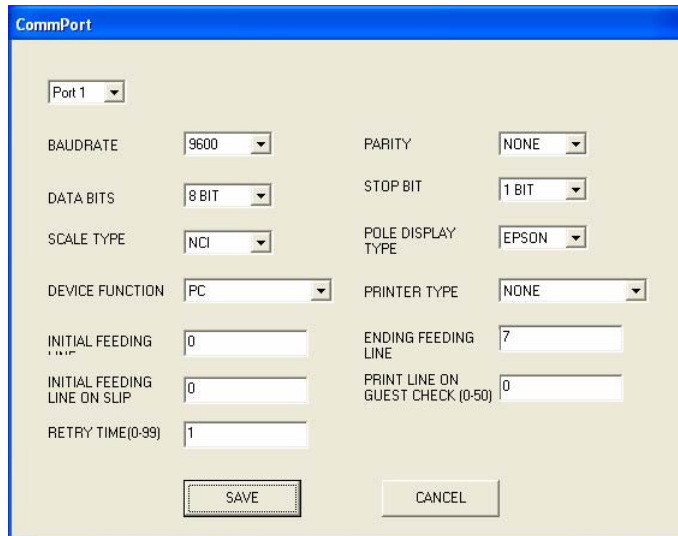
# Key Layout

**Note: To see the entire keyboard on the screen, the screen resolution must be set to 1024 x 768 pixels.**

The screenshot shows the 'KeyLayout' application window. The title bar reads 'KeyLayout'. The menu bar includes 'File', 'View', and 'Help'. The main area contains a grid of 13 columns and 8 rows of macro keys, identical to the one in the 'Macro' screenshot.

Hamburger	PLU8	PLU15	PLU22	PLU29	PLU36	PLU43	PLU50	PLU57	PFEED	NOSALE	VOID	ERRCORR	CLERK	
heeseburger	PLU9	PLU16	PLU23	PLU30	PLU37	PLU44	PLU51	PLU58	TAX1	PAGEUP	YESNO	AGEDOWN	ADDCHK	
Bacon CB	PLU10	PLU17	PLU24	PLU31	PLU38	PLU45	PLU52	PLU59	LEVEL1	CLEAR	PLU	@/FOR	FUNCLK1	
French Fries	PLU11	PLU18	PLU25	PLU32	PLU39	PLU46	PLU53	PLU60	LEVEL2	7	8	9	FUNCLK2	
	PLU25	PLU12	PLU19	PLU26	PLU33	PLU40	PLU47	PLU54	PLU61	≈ 1	4	5	6	CHECK
	PLU6	PLU13	PLU20	PLU27	PLU34	PLU41	PLU48	PLU55	PLU62	≈ 2	1	2	3	UBTOTAL
	PLU7	PLU14	PLU21	PLU28	PLU35	PLU42	PLU49	PLU56	PLU63	MACRO1	0	00	.	CASH

## Comm Port

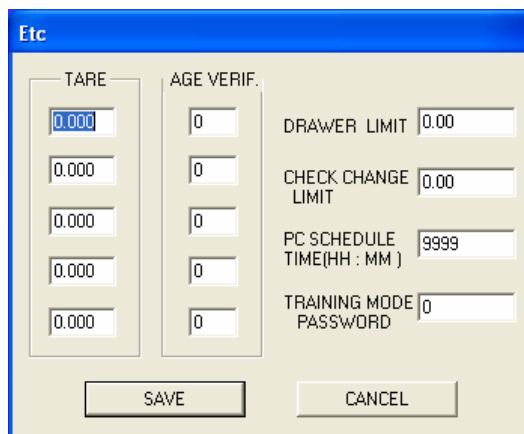


The CommPort dialog box contains the following settings:

Port 1	BAUDRATE: 9600	PARITY: NONE
	DATA BITS: 8 BIT	STOP BIT: 1 BIT
	SCALE TYPE: NCI	POLE DISPLAY TYPE: EPSON
	DEVICE FUNCTION: PC	PRINTER TYPE: NONE
	INITIAL FEEDING LINE: 0	ENDING FEEDING LINE: 7
	INITIAL FEEDING LINE ON SLIP: 0	PRINT LINE ON GUEST CHECK (0-50): 0
	RETRY TIME(0-99): 1	

Buttons: SAVE, CANCEL

## Etc. – Tare/Age Verification/Drawer Limit/Change Limit/PC Schedule Time/Training Mode Password



The Etc dialog box contains the following settings:

TARE: 0.000	AGE VERIF.: 0	DRAWER LIMIT: 0.00
0.000	0	CHECK CHANGE LIMIT: 0.00
0.000	0	PC SCHEDULE TIME(HH : MM) : 9999
0.000	0	TRAINING MODE PASSWORD: 0
0.000	0	

Buttons: SAVE, CANCEL

# Appendix

---

## Cabling Diagrams

You can configure cables yourself with the diagram provided here, or you can order the appropriate cables from CRS Parts at 1-800-333-4949.

