
SAM4s ER-390M Series

PC Utility User's Manual



All specifications are subject to change without notice.

Version 1.2
©2012, CRS, Inc.

CRS, Inc.

Limited Warranty and Disclaimers of Warranty

This manual has been developed by CRS, Inc. It is intended for the use of its customers and service personnel and should be read in its entirety before attempting to install, use or program the product(s).

Nothing contained in this manual shall be deemed to be, and this manual does not constitute, a warranty of, or representation with respect to, the product or any of the products to which this manual applies. This manual is subject to change without notice and CRS, Inc. has no obligation to provide any updates or corrections to this manual. Further, CRS, Inc. also reserves the right, without prior notice, to make changes in equipment design or components as it deems appropriate. No representation is made that this manual is complete or accurate in all respects and CRS, Inc. shall not be liable for any errors or omissions contained in this manual. In no event shall CRS, Inc. be liable for any incidental or consequential damages relating to or arising out of the use of this manual. This document contains proprietary information that is protected by copyright. All rights are reserved. No part of this document may be photocopied or reproduced without prior written consent of CRS, Inc.

NOTICE

IF ANY WARRANTY IS EXTENDED TO YOU WITH REGARD TO THE PRODUCT(S) TO WHICH THIS MANUAL APPLIES, IT IS A WARRANTY FROM THE ENTITY OR INDIVIDUAL FROM WHOM YOU DIRECTLY PURCHASED THE PRODUCT(S).

SUBJECT TO THE FOREGOING, UNLESS YOU ARE A DIRECT END USER CUSTOMER OF CRS, INC., CRS, INC. DOES NOT EXTEND TO YOU ANY EXPRESS WARRANTY OR ANY IMPLIED WARRANTY AND EXPRESSLY DISCLAIMS ANY IMPLIED WARRANTY OF MERCHANTABILITY, FITNESS FOR USE, OR FITNESS FOR ANY PARTICULAR PURPOSE, OR ANY WARRANTY OF NON-INFRINGEMENT OF INTELLECTUAL PROPERTY RIGHTS IN CONNECTION WITH THE PRODUCT(S) OR ANY SOFTWARE, DRIVERS, OR PROGRAMMING PRODUCT, WHETHER EMBEDDED IN PRODUCT(S) OR PROVIDED AS A SEPARATE PROGRAM, OR USED IN CONJUNCTION WITH THIS/THESE PRODUCT(S). CRS, INC. SPECIFICALLY DOES NOT WARRANT THAT THE OPERATION OF ANY DRIVERS, SOFTWARE, OR PROGRAMMING PRODUCTS LICENSED HEREUNDER, WHETHER EMBEDDED IN PRODUCTS OR PROVIDED AS SEPARATE PROGRAMS, SHALL BE UNINTERRUPTED OR ERROR FREE OR THAT FUNCTIONS CONTAINED IN SUCH DRIVERS, SOFTWARE OR PROGRAMMING PRODUCTS SHALL OPERATE IN COMBINATION(S) WHICH MAY BE SELECTED FOR USE BY YOU OR OTHERWISE MEET YOUR REQUIREMENTS.

CRS, Inc. is not responsible for any damages or loss, either direct, indirect, special, incidental or consequential, which you may experience as a result of your purchase or use of the product(s). Your sole remedy in the event that you encounter any difficulties with the product(s) is against the entity or individual from whom you purchased the product(s).

Revision 2.0 - April 1, 2005

Contents

Introduction	3
About the ER-390M PC Utility	3
Getting Started	5
Setting the ER-390M RS-232C Port	5
Preparing the ER-390M for Communications	7
Installing the Utility	7
Starting the PC Utility	8
Store Settings	9
Upload/Download Programs	11
UpProgram	11
DownProgram	12
Edit Programs	13
Procedures	13
Program Edit Screens	14
Reports	21
Poll Reports	21
View Reports	22
Prepare & Load Bitmap Logos	25
Preparing a Graphic Logo Bitmap for an ER-390M	25
Download a Graphic Logo to an ER-390M.....	26
Printing the Logo Image – ER-390M Settings	27
Appendix	29
Cabling Diagrams	29

Introduction

About the ER-390M PC Utility

The ER-390M Series PC Utility provides basic PC communication functions for Sam4s ER-390M. This utility was designed primarily as a dealer tool - to save, edit, and download programs.

The ER-390M Series PC Utility includes the following features:

- Multiple Stores
- Save and Load ECR programs
- Convert & Download Logo Bitmaps
- Edit ECR programs
- Poll and View Register Reports
- Remote Modem Communication Capability

Note: The ER-390M Series PC Utility was developed to work best with a screen resolution of at least 1024 x 768 pixels.

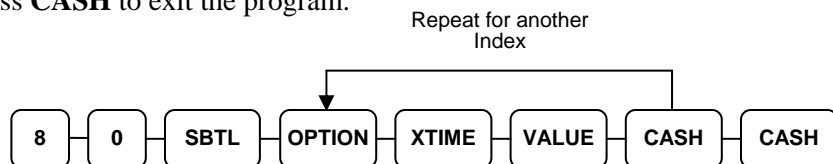
Getting Started

Setting the ER-390M RS-232C Port

At the ER-390M, you must select 'PC' as the device that is attached to one of the RS-232C communications port.

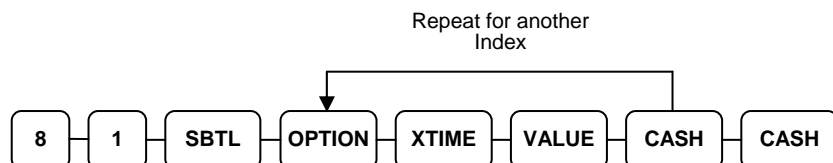
If you are using RS-232C Port #1:

1. Turn the control lock to the **S** position.
2. Enter **8 0** and press the **SBTL** key.
3. Enter **5** and press the **X/TIME** key. (Refer to the RS-232C option chart that follows.)
4. Enter **1** (the value for PC) and press the **CASH** key.
5. Press **CASH** to exit the program.



If you are using RS-232C Port #2:

1. Turn the control lock to the **S** position.
2. Enter **8 1** and press the **SBTL** key.
3. Enter **5** and press the **X/TIME** key. (Refer to the RS-232C option chart that follows.)
4. Enter **1** (the value for PC) and press the **CASH** key.
5. Press **CASH** to exit the program.



RS-232 Option Chart

Address	Option	Value	Selection
1	Baud Rate	0	9600 BPS
		1	1200 BPS
		2	2400 BPS
		3	4800 BPS
		4	19200 BPS
2	Parity	0	NONE
		1	ODD
		2	EVEN
3	Data Bits	0	8 BITS
		1	7 BITS
4	Stop Bits	0	1 BIT
		1	2 BIT
5	Device Function	0	NONE
		1	PC
		2	SCALE
		3	Remote Journal (Surveillance)
		4	Remote Printer
		5	Not used
		7	COIN
		9	Pole Display
6	Initial Feeding Line KP	0 - 20	
7	End Feeding Line KP	0 - 20	
8	Initial Feeding Line Slip	0 - 20	
9	Print Line On Guest Check	0 - 50	
10	Scale Type	0	NCI
		1	CAS
11	Printer Type	0	NONE
		1	SRP-270/275/Ellix 10
		2	SRP-350/370/Ellix 20
		3	SRP-500

Preparing the ER-390M for Communications

The register must be ready for communications:

- Connect the register directly to the PC with the appropriate cable. See “Cabling Diagrams” on page 29.
- The register power must be on.
- A clerk must be signed on.
- The register cannot be inside of a transaction.
- The key lock can be in any position.

Installing the Utility

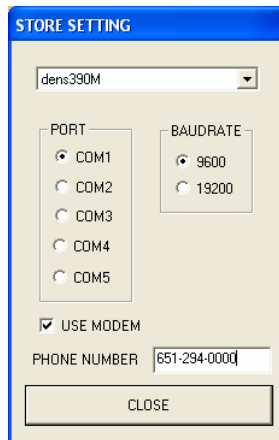
1. From Windows Explorer, locate the file: SETUP390.exe. Double click the file to open the installation dialog box.
2. Follow the instructions on the screen to complete the installation.

Starting the PC Utility

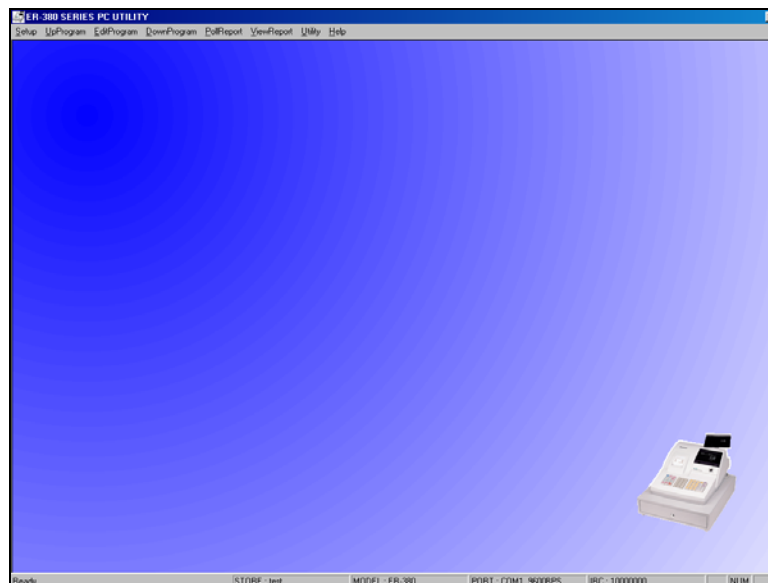
1. Choose **Start, Programs, SHC PC UTILITY** and then **390pc**. When starting the utility for the first time, the ADD STORE dialog box displays.



2. Enter the store name and click **OK**. The STORE SETTING dialog displays.



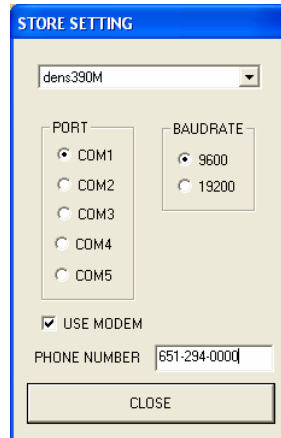
2. Select the store you wish to open and click the **Close** button. The **ER-390 Series PC Utility** window opens.



Store Settings

There is no limit to the number of stores. When you start the utility for the first time, enter the store name and select the PC port and baud rate.

The Store Setting Dialog Box



Selecting a Store

- ◆ Select the working store when you start the utility.
- ◆ To change the working store after the utility has been started, choose **Setup Store** from the **Setup** menu and select a different store from the drop-down list box.

Adding a Store

- ◆ Choose **Add Store** from the **Setup** menu. At the **Add Store** dialog, enter the store name and click **OK**. At the **Store Setting** dialog, select the PC port, baud rate and click the **Close** button.

Removing a Store

- ◆ Choose **Remove Store** from the **Setup** menu. At the **Remove Store** dialog, select the store name to remove and click **OK**.

Using a Modem

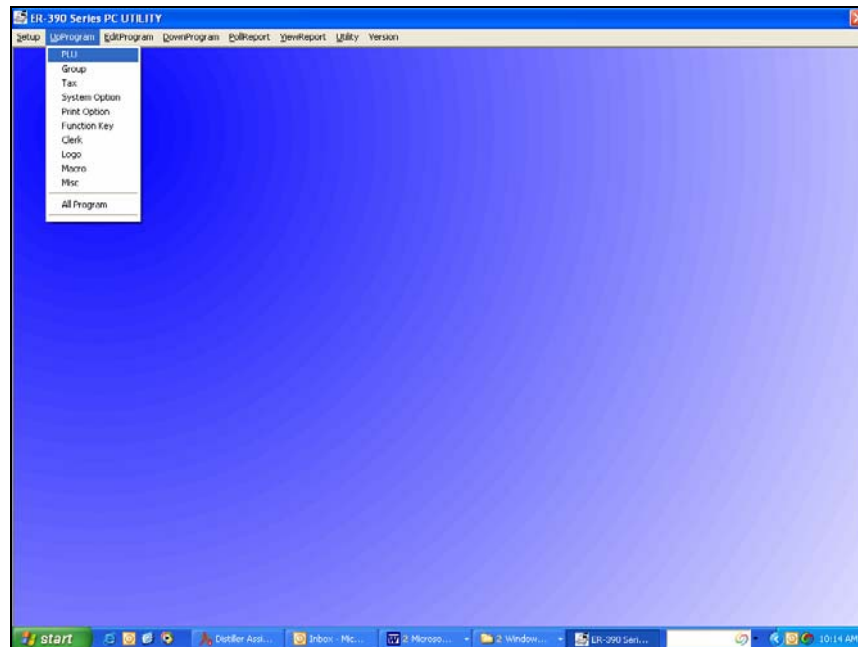
- ◆ Choose **Use Modem** check box and enter the phone number of the store in the **Phone Number** field.

Upload/Download Programs

UpProgram

You must upload a program before program edit functions are allowed.

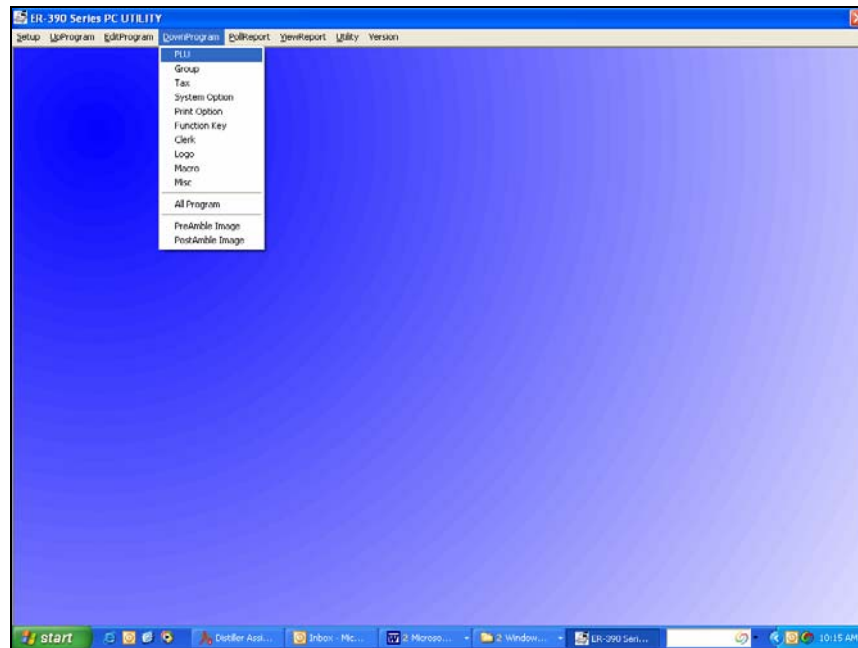
- ◆ Select the program segment you wish to upload from the **UpProgram** menu, or select **All Program** to upload the entire register program



DownProgram

Downloading a program will overwrite the existing register program.

- ◆ Select the program segment you wish to download from the **DownProgram** menu, or select **All Program** to download the entire register program (not including PreAmble and PostAmble images, that are downloaded separately.)



Edit Programs

Procedures

With the exception of memory allocation, all register programs can be edited with the PC Utility. You will find options neatly organized on dialog boxes, making register option programming on the PC Utility more efficient than programming options at the register.

▪ **You must upload a program before program edit functions are allowed.**

1. To edit a program, choose the appropriate program from the **EditProgram** menu. An example of each program dialog box is shown in this chapter.
2. After edits, click **Save** to exit and save changes, or click **Cancel** to exit without saving changes.

Tips

- Each Store's data, including both uploaded program files and polled report files, is located in a separate folder under the ER-390MPC folder.
- If you are building a new register program based upon an existing store, you can copy an existing store's program files to a new store folder. It is often more efficient to modify an existing program than to start over with a new one.
- If you are building a large PLU file with identical (or similar) options for each PLU, you may find the from/to PLU programming at the register useful. For example, you can first program the identical options for a range of PLUs at the register. Then upload the PLU program with the utility. Use the utility to program descriptors, prices and make adjustments to each PLU individually. Finally, you can download the completed program to the register.
- If you have questions regarding the meaning of ECR features, refer the appropriate *ER-390M Program and Operation* manual for an explanation of your program options.

Note: When editing descriptor fields, you can make bold characters print on the ECR by entering a tilde (~) before each character. Each bold character occupies 2-character positions.

Program Edit Screens

PLU

PROGRAMMING PLU - Right click to delete an item.

CODE	DESCRIPTOR	PRIC		TOTAL PLU#: 13
1	steak sand	E		
2	EL POLLO LOC	1		
3	Chicken sand	5		
4	Grilled chee	2		
5	chicken leg	1		
6	Chicken Wing	4		
7	Chicken&RIBS	19		
8	Hamburger	3		
9	Cheeseburger	4		
10	FF's	1		
11	Onion Rings	2		
12	Mushrooms	4		
13	Hot Dog	1		

PLU CODE:

DESCRIPTOR:

GROUP:

PRICE1:

PRESET PRESET OVERRIDE

TAXABLE BY: 1 2 3 4

FOOD STAMP ELIGIBLE NEGATIVE ITEM

HASH ITEM SINGLE ITEM

NON ADD # COMP. GALLONAGE ITEM

SCALABLE DISABLE PROMO

PRINT ON RECEIPT AUTO SCALE

PRINT PRICE ON RECEIPT COUNTER NOT RESET

PRESET OVERRIDE IN MGR MOD DISABLE

LINK PLU CODE:

AUTO TARE:

SAVE & EXIT

SAVE & NEW

CANCEL

Groups

GROUP

#	DESCRIPTOR
1	GROUP 1
2	GROUP 2
3	GROUP 3
4	GROUP 4
5	GROUP 5
6	GROUP 6
7	GROUP 7
8	GROUP 8
9	GROUP 9
10	GROUP 10
11	GROUP 11
12	GROUP 12
13	GROUP 13
14	GROUP 14
15	GROUP 15
16	GROUP 16
17	GROUP 17
18	GROUP 18
19	GROUP 19
20	GROUP 20

GROUP 1

DESCRIPTOR:

ADD TO GROUP TOTAL

SEND TO KP

KP PORT:

PORT#

RECEIPT

PRINT RED ON KP

SAVE

CANCEL

Tax

Tax

TAX1

ADD ON RATE: 6.500

TAX TABLE

VAT

GST TAXTABLE

TAX 1

TAX 2

TAX 3

SAVE CANCEL

System Option

SystemOption

BEEPER ACTIVE % AND TAX CALCULATION: Round up at 0.50

CLOCK ENTRY: Push ELECTRONIC JOURNAL ENABLE

CLERK IS: Stay down PROMPT OPERATOR WHEN EJ BUFF. IS FULL

DRAWER NEED TO BE SHUT TO OPERATE STOP OPERATIONS WHEN EJ BUFF. IS FULL

ACTIVATE DRAWER OPEN ALARM SEND ONLY NEGATIVE ENTRIES TO EJ

SECONDS TO ALLOW DRAWER OPEN (1-99): 30 SEND RESET REPORT TO EJ

ALLOW POST TENDER DISABLE CASH DECLARE

OPEN DRAWER ON POST TENDER USE SPOOL

ALLOW MULTIPLE RECEIPTS ALLOW DOLLAR ENTRY W/O SCALE ON SCALEABLE ITEM

CASH DECLARATION REQUIRED EFT DRAFT IS: DATATRA

NEGATIVE BALANCE IN X MODE PIN PAD TYPE: ROTATE

ZERO BALANCE IN X MODE OVERLAY DESCRIPTOR

RESET TRANSACTION NO. ON Z REPORT USE MCR

RESET GRAND TOTAL AFTER Z REPORT USE TRACK: TRACK 1&2

OPEN DRAWER WHEN REPORTS RUN MSR CONNETTED: DATATRA

OPEN DRAWER DURING TRAIN MODE PRINTER PAPER SENSOR ACTIVE

DECIMAL PLACE: 2 DEACTIVATE SPLT PRICING

DATE FORMAT: MDY ALLOW DIRECT MULTIPLICATION

ALLOW SWEDISH ROUND ON SUBT GLOBAL ENTRY LIMIT (0-14): 0

ALLOW SWEDISH ROUND ON CASH DIRECT MULT MORE THAN ONE DIGIT

DISPLAY ADD PRICE OF LINKED ITEMS

SAVE CANCEL

Print Option

PRINT OPTION

MEDIAL TOTALS ON CLERK REPORT
 PRINT TAX SYMBOL
 PRINT VOID MODE AND RETURN ON REPORT
 PRINT AUDACTION ON REPORT
 PRINT PLU REPORT BEFORE FINANCIAL REPORT
 SKIP ZERO TOTALS ON FINANCIAL REPORT
 SKIP ZERO TOTALS ON CLERK REPORT
 PRINT CLERK REPORT AFTER FINANCIAL REPORT
 PRINT SALE ITEM NO.
 PRINT PLU WITH ZERO TOTALS ON REPORT
 PRINT SUBTOTALS WHEN PRESSED
 PRINT % OF SALES ON PLU REPORT
 PRINT CONSECUTIVE NO.
 PRINT DATE PRINT TIME
 PRINT MACHINE NO.
 PRINT CLERK NAME
 PRINT Z COUNTER
 HOME CURRENCY SYMBOL \$

PRINT RECEIPT WHEN SIGN ON/OFF
 Print Grand total
 On X Report On Z Report
 Print Gross total
 On X Report On Z Report

PRINT SUBTOTAL WITHOUT TAX
 TAX AMOUNT IS

PRINT TAX AMOUNT
 PRINT TAXABLE TOTAL
 PRINT TAX % RATE
 VAT BREAK DOWN
 PRINT TRAIN MODE TITLE WHEN TRAIN MODE
 CURRENCY SYMBOL
 Conv # 1 *
 Conv # 2 *
 Conv # 3 *
 Conv # 4 *

PRINT KP ORDER # ON RECEIPT
 PRINT PRICE ON KP
 SEND TO KP IN VOID MODE
 SEND TO KP IN TRAIN MODE
 COMBINE LIKE ITEMS ON KP
 VOLUME UNIT

PRINT PREAMBLE MESSAGE ON RECEIPT
 PRINT POSTAMBLE MESSAGE ON RECEIPT
 AVERAGE ITEM / CUST
 AVG \$ / CUST
 BUFFER RECEIPT ISSUE WHEN RECEIPT IS ON

PRIORITY PRINT BY GROUP ON KP
 PRINT PLU # ON RECEIPT
 NOT PRINT WHEN POLLING REPORT
 PRINT PLU# IN PLU REPORT
 GRAND TOTAL IS

SEND ORDER TO KP AT SUBTOTAL
 ON RECEIPT
 PRINT PREAMBLE GRAPHIC LOGO
 PRINT POSTAMBLE GRAPHIC LOGO
 PRE GRAPHIC LOGO
 POST GRAPHIC LOGO

EDIT PRE FEEDING LINE (0-9)
 EDIT POST FEEDING LINE (0-9)
 PRINT E.J FROM
 Copy of DAT&TRAN receipt (0-99)

Mask card number on all EFT drafts
 Font size is small

Function Key

FuncKey

Function Key

NOSALE
 % 1
 % 2
 % 3
 % 4
 % 5
 ADDCHK
 CANCEL
 CASH
 CHARGE1
 CHARGE2
 CHARGE3
 CHARGE4
 CHARGE5
 CHARGE6
 CHARGE7
 CHARGE8
 CHARGE#
 CHKCASH
 CHECK
 CONV1
 CONV2
 CONV3
 CONV4
 DVTHR
 EATIN
 ERRCORR
 F/S SUB
 F/S TEND

NOSALE

DESCRIPTOR 1
 DESCRIPTOR 2

KEY DISABLE UNDER MGR CONTRC
 INHIBIT NO SALE AFTER NON-ADD #
 ENFORCE# ENTRY AT START OF SALE
 PRINT ON N/S
 NON-ADD# PROHIBIT
 COMP. NON-ADD # MUST MATCH MAX DIGIT

MAX DIGIT (0 - 8)

Clerk

CLERK

#	DESCRIPTOR
1	CLERK 1
2	CLERK 2
3	CLERK 3
4	CLERK 4
5	CLERK 5
6	CLERK 6
7	CLERK 7
8	CLERK 8
9	CLERK 9
10	CLERK 10

CLERK 1

DESCRIPTOR

CLERK CODE

Logo/Descriptors

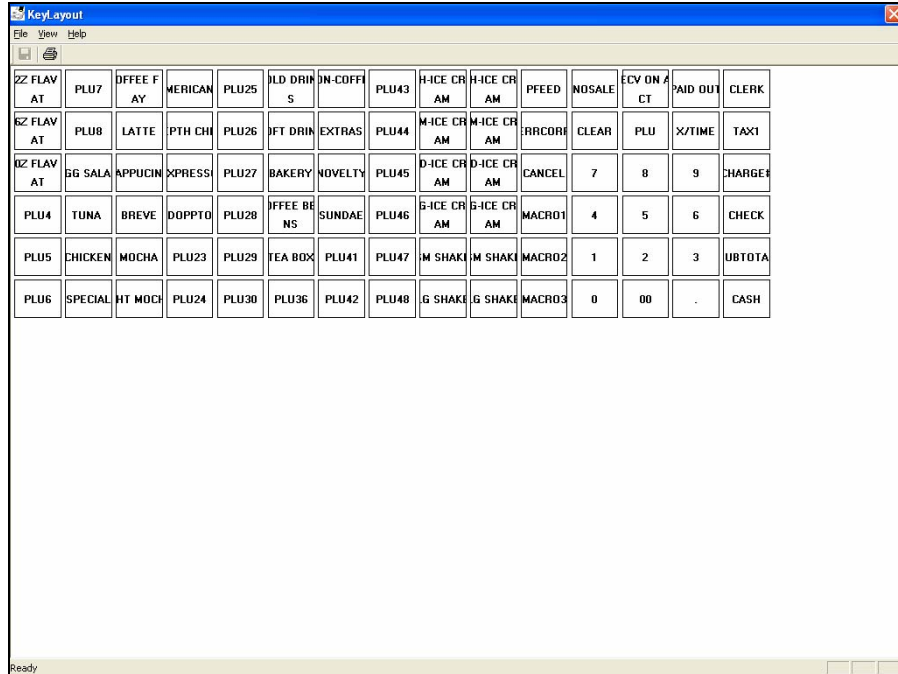
LogoDesc

PREAMBLE		ENDORSEMENT MESG	
1	<input type="text"/>		<input type="text"/>
2	<input type="text"/>		<input type="text"/>
3	<input type="text"/>		<input type="text"/>
4	<input type="text"/>		<input type="text"/>
6	<input type="text"/>		<input type="text"/>
7	<input type="text"/>		<input type="text"/>

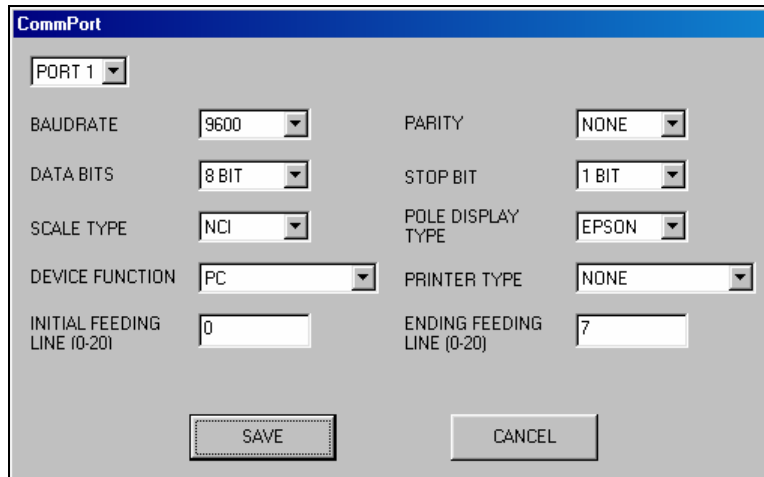
POSTAMBLE	
1	<input type="text"/>
2	<input type="text"/>
3	<input type="text"/>
5	<input type="text"/>
6	<input type="text"/>
7	<input type="text"/>

Key Layout

Note: To see the entire keyboard on the screen, the screen resolution must be set to 1024 x 768 pixels.



Comm Port



Etc. – Tare/Drawer Limit/Change Limit/Machine Number

The 'Etc' window contains the following fields and controls:

Field Name	Value
TARE WEIGHT (0.100)	0.100
TARE WEIGHT (0.200)	0.200
TARE WEIGHT (0.300)	0.300
TARE WEIGHT (0.400)	0.400
TARE WEIGHT (0.500)	0.500
DRAWER LIMIT	0.00
CHECK CHANGE LIMIT	0.00
MACHINE NUMBER	12345
TRAINING MODE PASSWORD	0

Buttons: SAVE, CANCEL

Scan Data

The 'SELECT PROGRAM' window contains the following buttons:

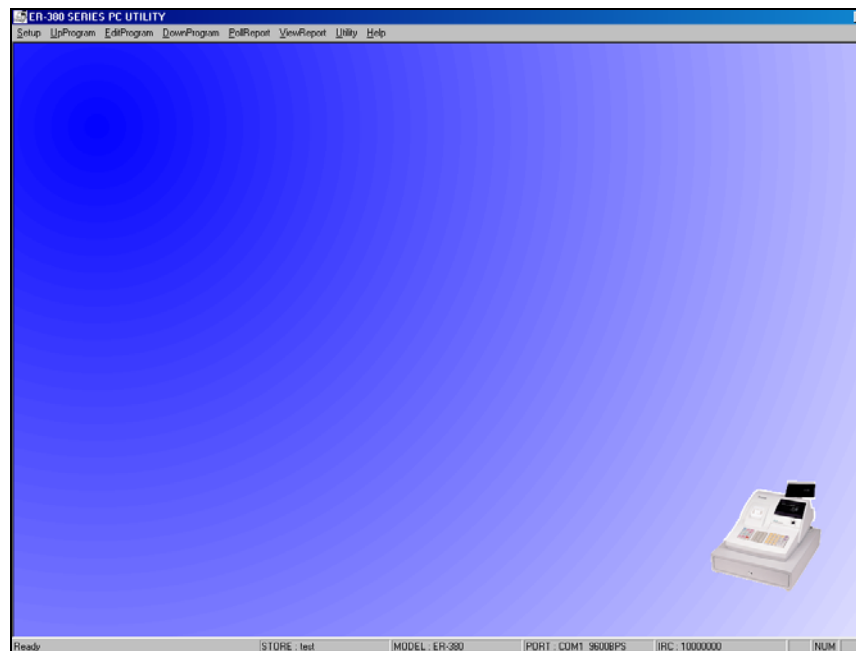
PLU	GROUP
TAX	SYSTEM OPTION
PRINT OPTION	FUNCTION KEY
CLERK	LOGO & DESCRIPTOR
MACRO	NLU
ETC(TARE...)	PORT

Button: CANCEL

Reports

Poll Reports

- ◆ Select the report you wish to poll from the **PollReport** menu, or select **AllReport** to upload all reports.



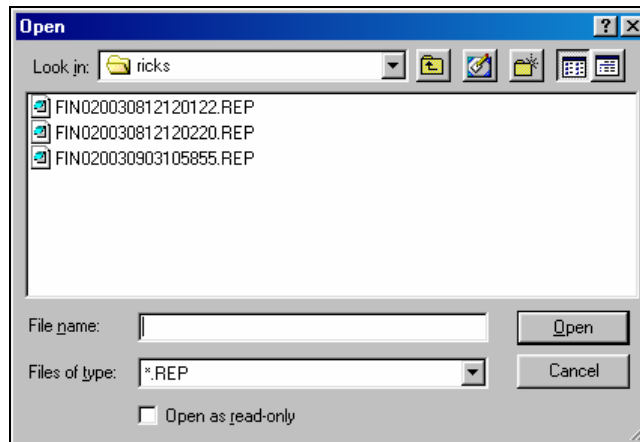
View Reports

Note: Polled report can only be viewed with the built-in viewer. Report files are not ASCII format, nor can they be converted to ASCII format with this utility

1. Select the Individual Report from the ViewReport menu.



2. Click the button that represents the report you wish to view.



3. Select the report you wish to view and click **Open**.

Click to display the report without totals that have zero values

Click to view the next page of the report.

DESCRIPTION	COUNT	TOTAL
+PLU TTL	00.00	300.70
-PLU TTL	0.00	0.00
ADJUST TTL	00.00	300.70
NONTAX	2	8.38
TAX1 SALES	0	289.45
TAX2 SALES	0	289.45
TAX3 SALES	0	286.45
TAX4 SALES	0	292.40
TAX1	0	18.74
TAX2	0	17.50
TAX3	0	17.32
TAX4	0	17.68
XMP1 SALES	0	0.00
XMP2 SALES	0	0.00
XMP3 SALES	0	0.00
XMP4 SALES	0	0.00
EATIN TTL	0	0.00
TAKEOUT TTL	0	0.00
DRTHRU TTL	0	0.00
% 1	0	0.00
% 2	0	0.00
% 3	0	0.00
% 4	0	0.00
% 5	0	0.00
NET SALE	50	372.02
CREDIT TAX1	0	0.00
CREDIT TAX2	0	0.00
CREDIT TAX3	0	0.00
CREDIT TAX4	0	0.00
FD/S CREDIT	0	0.00

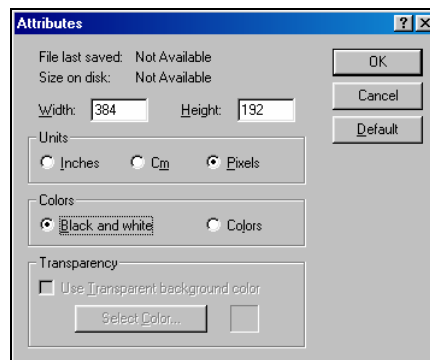
4. Use the scroll bar or the arrow buttons to view the report

Prepare & Load Bitmap Logos

Preparing a Graphic Logo Bitmap for an ER-390M

The image must be black/white, 384 x 192 pixels, and 10 Kbytes or less in size.

1. Open MS Paint.
2. Open the image file you wish to use.
3. Choose **Attributes** from the **Image** menu. The **Attributes** dialog box displays.

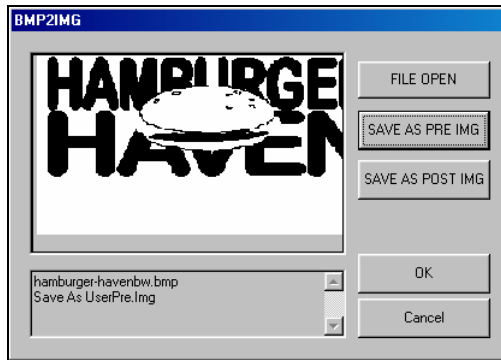


4. The image dimensions must be no larger than 384 pixels wide by 192 pixels high. If the image size in pixels is greater than the maximum, you must resize your image.
 - a. Click **OK** to exit the Attributes dialog.
 - b. Select your image. (Choose **Select All** from the **Edit** menu.)
 - c. Using the handles of the selected image, resize the image. Keep the image in the upper left corner of the screen.
 - d. Choose **Attributes** from the **Image** menu. The **Attributes** dialog box displays again. Enter 384 in the **Width** field; enter 192 in the **Height** field; select **Pixels** as the unit. Click **OK** to exit the dialog box.

- e. Your image will be cropped to the 384 x 192 pixel size. If you cropped part of the image you wish to keep, you can undo (Ctrl + Z) and try again. You may have to experiment a bit to resize the image inside the 384 x 192 pixel limit.
5. After the image is sized, select **Black and white** in the **Attributes** dialog.
6. Save your image as type “Monochrome Bitmap (*.bmp,*.dib)” and confirm that the size is 10k or less.

Download a Graphic Logo to an ER-390M

1. Install the *ER-390M PC Utility* on your PC.
2. At the ER-390M, set the RS-232C option address #5 to a value of 1 (PC).
(S position; 80 SBTL; 5 X/TIME; 1 CASH; CASH, or
S position; 81 SBTL; 5 X/TIME; 1 CASH; CASH)
3. Return key lock to **REG** and sign on a clerk.
4. Connect the PC to the ER-390M using one of the following cables:
CRS Part # 522035 (Register DB-9M to PC DB-9F)
CRS Part # 522038 (Register DB-9M to PC DB-25F)
5. At your PC, start the ER-390M PC Utility. (Select **Start, Programs, SHC PC UTILITY, ER-390M PC UTILITY.**) The **Store Setting** dialog box displays.
6. If you are starting the ER-390 PC Utility for the first time, you must define a store name, or if a store is already defined, you can select the store from the drop down list. After the store is defined or selected, click **Close**. The PC Utility program starts.
7. Move the .bmp logos you wish to use into the store directory (i.e. C:/ER-390PC/storename.)
8. At the PC Utility, choose **Convert Logo Image** from the **Utility** menu. The Bmp dialog box displays.
9. Click **FILE OPEN**. Select the bitmap image you wish to use from the **Open** dialog and click the **Open** command button.
10. Click the **SAVE AS PRE IMG** or **SAVE AS POST IMG** button.



11. When the image is selected, click **OK**. Verify that the message “Save As UserPre.Img” or “Save As UserPost.Img” displays. If the file is too large, and cannot be loaded, the message “File Size Error” display.
12. Choose **PreAmble Image** or **PostAmble Image** from the **DownProgram** menu.
13. The screen will track the progress of the download. When complete, the **COMM COMPLETED** message will display, click **OK**.

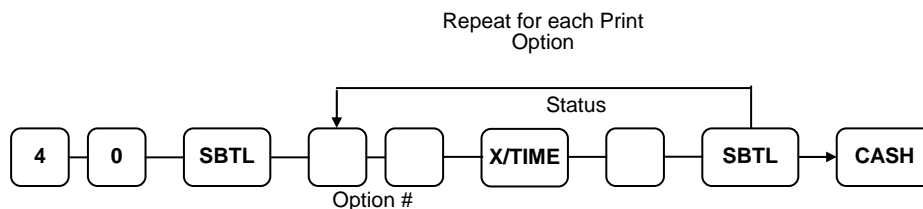
Printing the Logo Image – ER-390M Settings

Two addresses in Print Option Programming affect graphic logo printing:

Option #28 – Add the value of 1 to address 28 if you wish to print the pre graphic logo on the receipt. Add the value of 2 to address 28 if you wish to print the post graphic logo on the receipt.

Option #30 – Add the value of 1 to address 30 if you wish to print your custom bitmap instead of the default bitmap “Thank You – Your Receipt”. Add the value of 2 to address 30 if you wish to print your custom bitmap instead of the default bitmap “Call Again”.

Print Option Flowchart (P Key Lock Position)

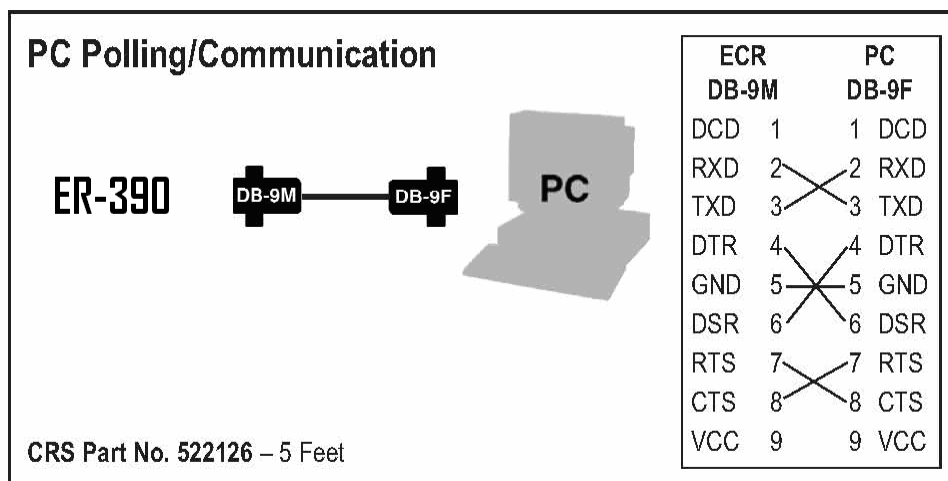


Appendix

Cabling Diagrams

You can configure cables yourself with the diagram provided here, or you can order the appropriate cables from CRS Parts at 1-800-333-4949.

Direct Connection



Modem Communication

Use P/N 250057 for PC to Modem and Modem to ECR connections. The recommended US Robotics Modem is also available from CRS, P/N 110175.

Part # 250057

