



7" All-In-One Touchscreen Panel

PROA7PLUS

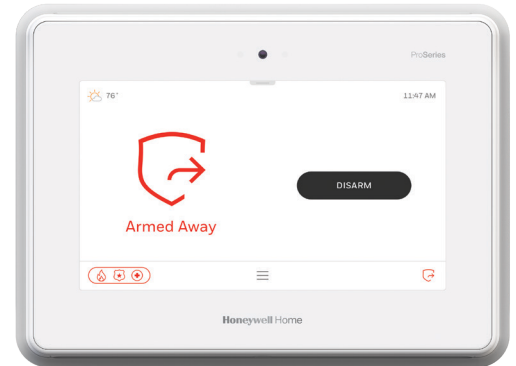
The ProSeries 7" All-in-One Security Panel is a single, self-contained panel that brings together a bright, color-capacitive touchscreen, powerful wireless controller, communicator, microphone, speaker and an 85 dB sounder. Designed for professional installations and upgrades in homes and businesses, the highly scalable All-in-One Security Panel serves as a powerful central hub for security and automation.

ProSeries supports a wide selection of sensors and devices using SiX™ two-way, wireless technology with highly secure AES-128 encryption. SiX devices support over-the-air updates and are locked with the panel, helping to prevent system takeovers. The panel also supports a variety of one-way wireless protocols including legacy 5800, using an optional module. This enables easy and cost-effective system upgrades for your existing install base.

The All-in-One Security Panel delivers an outstanding user experience, with a brilliant 7" color touchscreen display, the convenience of Bluetooth disarming, local voice control and integration with Amazon Alexa. A built-in camera takes a photo of who disarmed the system at the panel and can transmit it to the end-user's cell phone.

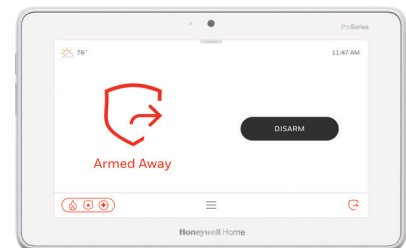
The Pro-Series All-in-One Security Panel integrates with the next generation of Resideo Total Connect, which delivers a faster, more fluid interaction on mobile devices.

For installation and service efficiency, radios and batteries are end-user replaceable, and the AlarmNet 360™ cloud-based business management tool enables easy remote programming, transmits over-the-air software and firmware updates, performs remote diagnostics and monitors and provides analytics on system usage and activity.



7" AIO Security Panel:
PROA7PLUS

Secondary Interfaces



7" Wireless Color Touchscreen:
PROWLTOUCH



Wireless Touchpad:
PROSIXLCDKP



7" All-In-One Touchscreen Panel Features and Technical Specifications

FEATURES

- **All-In-One**
Self-contained unit combines 7" graphic touchscreen, controller, communicator, microphone, speaker and sounder
- **ProSeries Platform**
Part of a broad and highly versatile security and smart home platform with consistent programming, user interfaces and a common range of sensors and peripherals across all solutions. When you learn one, you know them all.
- **SiX Sensors**
Extensive range of secure, encrypted two-way wireless sensors and peripherals with over-the-air upgrade capability
- **Modular Design**
User-replaceable, Z-Wave®/Wi-Fi® and cellular radio communications
- **Amazon Alexa Built-In**
Supports convenient voice interactivity with Alexa functions and commands
- **AlarmNet 360™ Online Management Platform**
Remote programming and diagnostics to improve business efficiencies and reduce truck rolls; www.alarmnet360.com
- **Optional Resideo Total Connect Remote Services**
Boost RMR while providing on-the-go security and home control, video viewing, and real-time alerts, anytime, anywhere, on any PC or smart device
- **Anti-Takeover Capability**
SiX sensors can be locked to the panel helping prevent competitive account takeovers and conversions
- **Built-In Camera**
Takes photos of user when system is disarmed; viewable through Total Connect mobile app or event log
- **Bluetooth® Disarming**
Hands-free auto-disarming with a linked mobile phone in proximity
- **Dual Path Communications**
End-user replaceable LTE communicators and Wi-Fi provide primary and back-up central station communications
- **Smart Home**
Z-Wave compatibility allows control of lighting, locks, thermostats and other devices; system operation can trigger programmed automated scenes that set devices to the end-user's preference
- **Partitions**
Program up to four independent partitions; ideal for commercial customers, small offices, retail shops and multi-dwelling homes

TECHNICAL SPECIFICATIONS

ALL-IN-ONE:

Capacities:

250 Security Zones (includes SiX and One-Way Devices)

127 Max. SiX Two-Way Wireless Devices

78 Z-Wave® Devices:

60 Lights, Water Valves, Shades

6 Thermostats

6 Locks

6 Garage Door Controls

8 Wireless Keypads (Touchscreen or LCD)

32 Remote Key Fobs

96 Users

4000 Event Log

DISPLAY:

7" (177.8mm) [diagonal]

LED-backlit capacitive touch display

1024 x 600 pixel resolution, support for millions of colors

USER INTERFACE:

Home Screen: Security Status, Arming Option, Panics, Weather, Time

Idle Screen: Weather, Date, Time, Status, Indoor Temp (if thermostat present)

Quick Pull-down: Voice On/Off, Chime On/Off, Alexa Mute, Brightness, Volume, Clean Screen, Battery Status, Connectivity

Menu Options: Favorites, Devices, Sensors, Smart Scenes, Settings

Trouble Indications: Low Battery, AC Loss, RF Jamming, Sensor/Device Out-of-Range, Communicator Failures, Failure to Communicate, Tamper Conditions, Detector End-of-Life

SIZE AND WEIGHT:

Height: 5.77" (146.6 mm)

Width: 7.90" (200.6 mm)

Depth: 1.06" (26.9 mm)

Weight: 2.10 lbs (0.95 kg)

PARTITIONS:

4 partitions

7" All-In-One Touchscreen Panel Technical Specifications

ARMING OPTIONS:

Modes: Arm Away, Arm Home, Arm Night, Arm with No Entry Delay (Instant), Quick Arm, Bypass and Arm, Arm with Silent Exit, Force Arm, Auto Arm, Arm with Quick Exit Option

Arm/Disarm via Total Connect

Arm via Triggers (Schedule, Event)

I/O CONNECTORS:

Input and Output:

Speaker

Microphone

Sounder with 85 dB intensity

Built in camera

Connectors and Modules:

Cellular module tray (end-user replaceable optional)

Internal backup battery module (end-user replaceable)

Wi-Fi/Z-Wave module (included)

1-way wireless takeover module (optional)

WIRELESS AND CELLULAR:

Radios/Modules

Max. Plug-in Modules: 3

Cellular: Primary communicator

LTE Verizon: (700, 1700, 1900 MHz)

LTE AT&T: (700, 850, 1700, 1900 MHz),

3G Fallback (850, 1900 MHz)

Carriers: LTE: AT&T®, LTE: Verizon®

Wi-Fi®: Device connectivity, central station communication

Wi-Fi (802.11 b/g/n); (2.4 GHz); 2 x 2 MIMO

Z-Wave Plus: Used for automation

Z-Wave module to support products using the Z-Wave protocol - 500 Series

INCLUDED PROTOCOLS:

BLE-Bluetooth Low Energy:

Bluetooth Disarm via cell phone

RF6-Security Sensors: 2.4 GHz with encryption - 128-bit AES

Wiselink: Use with Motion Viewers (918 MHz)

Antennas: SiX™ Two-Way Wireless Technology antenna to support encrypted two way wireless sensors

ZONES/SENSORS/WIRELESS:

Max. Two-Way Wireless Indoor/Outdoor Motion Viewers: 8

Max. Number of Wireless Keypads: 8
(Touchscreens and LCD)

Max. Secondary Wi-Fi Touchscreen Device: 16
(Requires Wi-Fi/Z-Wave card)

Optional module to takeover 5800, 2GIG, DSC 433 MHz, ITI/Qolsys and Bosch
(Part Number – PROTAKEOVER)

DEVICES:

78 Z-Wave® Devices:

60 Lights, Water Valves, Shades

6 Thermostats

6 Locks

6 Garage Door Controls

USERS:

Installer Code: 1

PIN Length: 4 digits

Credentials: PIN, Bluetooth® Device, Keyfob

BLUETOOTH DISARMING:

Max. Bluetooth Device: 6

Enable/Disable via AlarmNet 360™

SCENES/AUTOMATION:

Max Scenes: 100 (Requires Total Connect)

Types of Trigger: Schedule, Event, Manual

VOICE/CHIME:

Native Voice Assistant: Amazon Alexa
(Enable/Disable via AlarmNet 360)

Voiced Sensor and System Status Announcements

Up to 10 Selectable Chime Sounds (end-user selectable)

Mute Options

SOUNDER:

Max. Intensity: 85 dB

TWO-WAY VOICE:

Required Elements: PROA7PLUS

VIDEO ALARM VERIFICATION:

Required Elements: Indoor or Outdoor Motion Viewer, Total Connect Account, iViewNow Compatible Central Station

PROGRAMMING:

Full Programming via AlarmNet 360 Mobile App or Web Interface

BUILT-IN CAMERA:

Camera Resolution: 2MP Fixed

Photo Resolution: 640 x 480 pixels

Viewing Angle: 68°

Function: Captures two Images when system disarms

View via Total Connect or Event Log

LANGUAGE SUPPORT:

English, Spanish, Canadian French, Portuguese
(Installer selectable)

MOUNTING:

Wall mount back with power connector

Optional: Desk mount kit with plug-in power adapter

TAMPER:

Front and back cover tamper protection

POWER:

Plug-in power adapter

Input: 110-240VAC, 50/60 Hz

Output: 9VDC, 2.5A

Back-Up Battery

Lithium-Ion 3.6V, 7500mAh

24 hours of backup power

AGENCY LISTINGS:

ETL listed to UL Std 985, 1023, 1610

ETL to ULC Std S545, C1023

7" All-In-One Touchscreen Panel

ORDERING

PANEL AND USER INTERFACES – US		RESIDEO BRANDED	
PROA7PLUS	7" AIO Security Panel with Wi-Fi/Z-Wave module (included)	PROA7PLUSC	7" AIO Security Panel with Wi-Fi/Z-Wave module (included)
PROWLTOUCH	7" Wireless Touchscreen	PROWLTOUCHC	7" Wireless Touchscreen
PROSIXLCDKP	Customizable Display Wireless Keypad	PROSIXLCDKPC	Customizable Display Wireless Keypad
PANEL AND USER INTERFACES – CANADA		RESIDEO BRANDED	
PROA7PLUSCN	7" AIO Security Panel with Wi-Fi/Z-Wave module (included)		
PROWLTOUCH	7" Wireless Touchscreen	PROWLTOUCHC	7" Wireless Touchscreen
PROSIXLCDKCN	Customizable Display Wireless Keypad		
ACCESSORIES/POWER SUPPLIES			
PROA7DM	Desk Mount Stand for PROA7PLUS/PROA7PLUSC and PROA7PLUSCN		
PROA7XFMUS	Transformer with Terminal Block for PROA7PLUS and PROA7PLUSC		
PROA7XFMCN	Canadian Transformer with Terminal Block for PROA7PLUSCN		

For more information

www.resideo.com



Resideo Technologies, Inc.

2 Corporate Center Drive, Suite 100
 P.O. Box 9040
 Melville, NY 11747
 1-800-645-7492
resideo.com

L/PS7AIO2D/D | 08/20
 © 2020 Resideo Technologies, Inc.
 All rights reserved.
 The Honeywell Home trademark is used under license from Honeywell International Inc. This product is manufactured by Resideo Technologies, Inc. and its affiliates.

