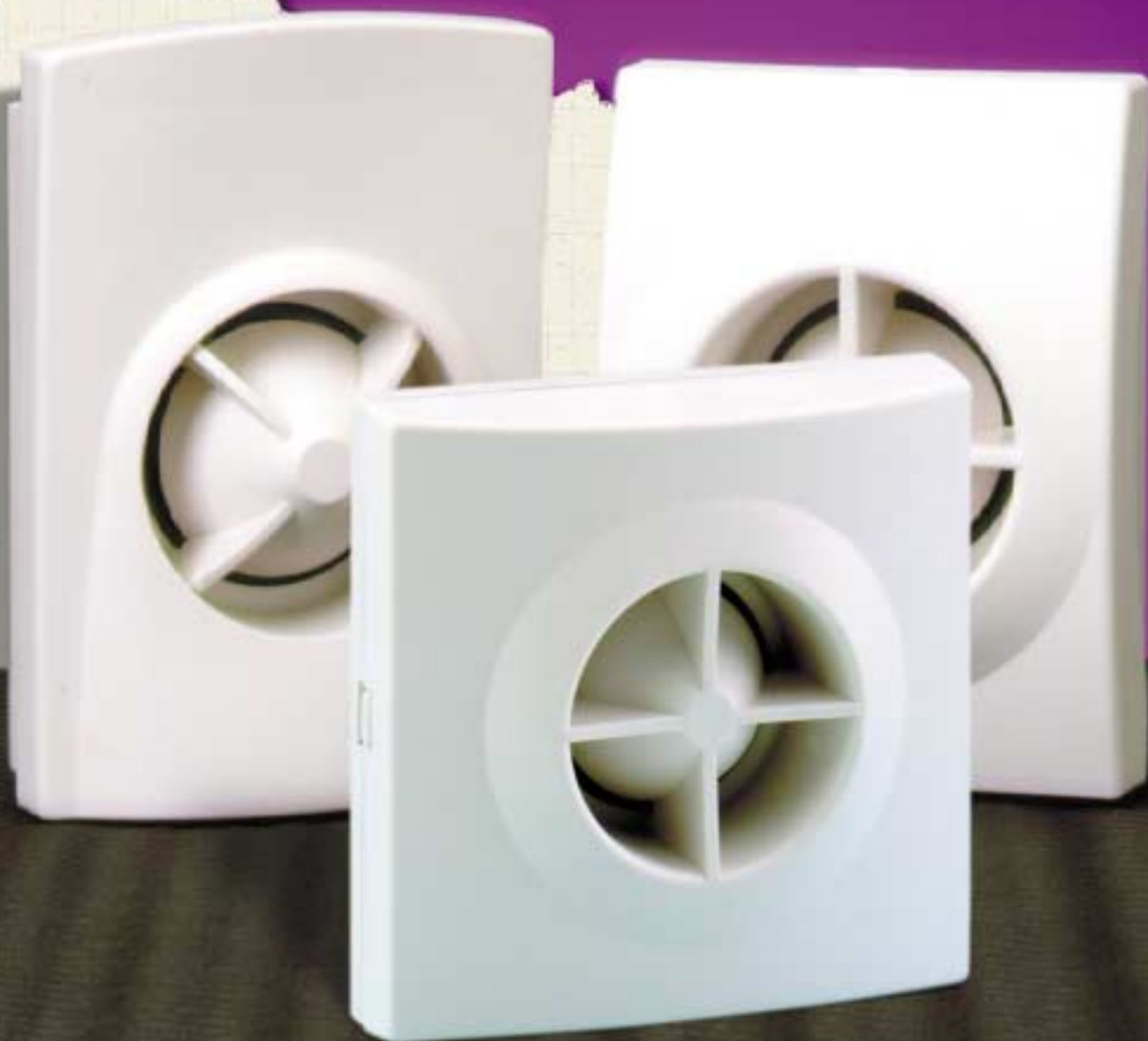


ASC
ADEMCO SENSOR COMPANY

An ADEMCO Group Company

Wave Series

Indoor Electronic Sirens and Speakers



Attractive design, powerful performance and installation ease. When it comes to electronic sirens and speakers, the miniature Wave Series is your best choice.

ADEMCO
GROUP

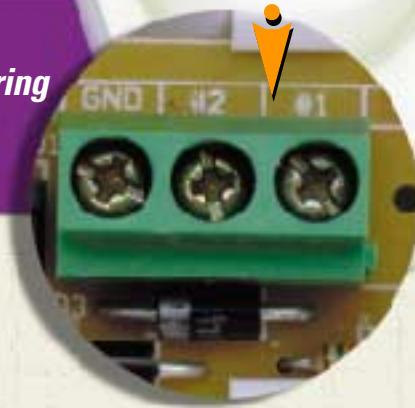
Wave Series

MOUNT ON

- Wall
- Corner
- Ceiling
- Single gang wall plate

The Wave's unique snap-open **HINGED CASE DESIGN**-an industry first for sounders- allows for installation without disassembly.

TERMINAL STRIP—no soldering or splicing required.



ASC's Wave Series is the industry's first to offer corner mounting capability as pictured. These sounders may be **CORNER MOUNTED** without the support of brackets, shelves or additional hardware. The Wave Series is designed to fit a standard single gang wall plate as well.



Wave 4

Indoor Electronic Sirens and Speakers

Mounted **VERTICALLY** or **HORIZONTALLY**, the Wave 2 siren and Wave speaker offers optimum installation versatility.



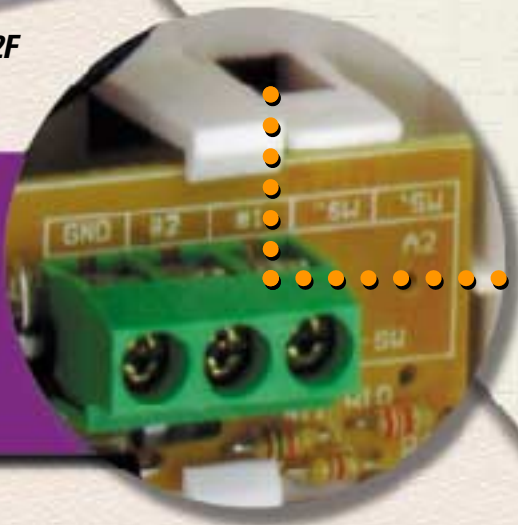
Wave 2



Wave 2F

The Wave-F speaker and Wave 2F siren can be **RECESSED** in a standard double gang electrical box, and also features the Wave snap-open hinged case design.

CHANNELED BACK makes surface or concealed wiring neat and convenient.



case back



An ADEMCO Group Company

Wave Series

Indoor Electronic Sirens and Speakers

The ASC Edge:

- ◆ Attractive patent pending designs fit single gang wall plate
- ◆ Snap-open hinged case cover for faster installation
- ◆ Terminal strip eliminates soldering and splicing
- ◆ Corner or ceiling mounting with no additional brackets or hardware
- ◆ Channeled case back for convenient wiring access
- ◆ Vertical or horizontal mounting (Wave 2, Wave) for great versatility
- ◆ Louder (106db) dual tone siren output

Wave2/Wave4

Siren Specifications:

Housing: ABS 94 V0 Plastic, with hinged case cover

Dimensions: Wave 2 - 3.25"W x 4.25"H x 2.0"D (82.5mm W x 108mm H x 51mm D)
Wave 2F - 4.4"W x 4.4"H x .750"D (112mm W x 112mm H x 19mm D) (Flush Mount)

Wave 4 - 3.25"W x 4.50"H x 2.0"D (82.5mm W x 114mm H x 51mm D)

Color: White

Operating Temperature: 20 deg.F to 175 deg.F

Operating Voltage: 6V - 14 VDC

Current Draw: 500mA Max. @ 12 VDC

Sound Pressure: Steady: 106db @ 12 VDC, 1 meter
Warble: 106db @ 12 VDC, 1 meter

Connection: 3 position Terminal Block (Wave 2, Wave 2F and Wave 4)
2 position Terminal Block (Wave Speaker)

Agency Listing: (Pending) UL1023, 985, and 464.

Wave/Wave-F

Speaker Specifications:

Impedance: 8 ohms, 15W peak

NOTE: Housing dimensions and other specifications are identical to Wave 2 and Wave 2F two-tone sirens.

How To Order:

Wave: 8 ohms/15 watt speaker

Wave-F: Flush mount. 8 ohms/15 watt speaker

Wave2: Two-tone siren

Wave2F: Flush mount two-tone siren

Wave4: Two-tone siren



Wave 2 corner mounts both horizontally and vertically.



**Same powerful performance.
Same installation ease.
You choose the style...
Wave 4, Wave 2 or Wave 2EX.**



1-800-467-5875

1230 S. Hurstbourne Pkwy., Suite 100, Louisville, KY 40222
L/WAVEv2/D



Copyright ©1999 Pittway Corporation