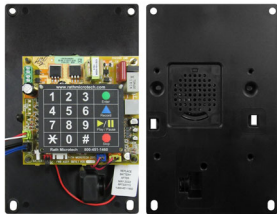
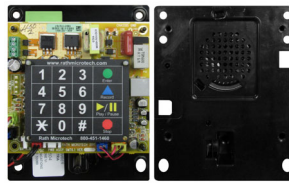


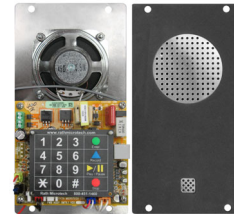
### Behind the Panel Mount



**Model Number:** 2100-957RIP  
**Size:** 8-1/8" H x 5-1/8" W



**Model Number:** 2100-907RIP  
**Size:** 5-3/8" H x 4-1/2" W



**Model Number:** 2100-957CIP  
**Size:** 8-1/3" H x 4-1/2" W

**Contact Us  
For Direct  
Mount  
Competitor  
Plates**

### Flush/Panel Mount



**Model Number:** 2100-958DIP  
**Size:** 12-1/2" H x 10-5/8" W  
**Style:** Brushed Stainless Steel  
**Options:** Mirrored Stainless Steel



**Model Number:** 2100-958SIP  
**Plate Size:** 12-1/2" H x 9-3/4" W  
**Back Box:** 8" H x 6" W x 3" D  
**Style:** Brushed Stainless Steel



**Model Number:** 2100-958NSIP  
**Plate Size:** 9-1/2" H x 7-1/2" W  
**Back Box:** 8" H x 6" W x 3" D  
**Style:** Brushed Stainless Steel



**Model Number:** 2100-958NMIP  
**Plate Size:** 9-1/2" H x 7-1/2" W  
**Back Box:** 8" H x 6" W x 3" D  
**Style:** Brushed Antique Bronze



**Model Number:** 2100-958MIP  
**Plate Size:** 12-1/2" H x 9-3/4" W  
**Back Box:** 8" H x 6" W x 3" D  
**Style:** Brushed Antique Bronze

### Surface Mount



**Model Number:** 2100-956SIP  
**Size:** 9" H x 5.92" W x 2.35" D  
**Style:** Stainless Steel



**Model Number:** 2100-984RIP  
**Size:** 9-1/2" H x 6" W x 2-7/8" D  
**Style:** Red, NEMA 4, Fiberglass

**Custom  
Sizes  
Available**

### Features

- Meets all ADA, ASME A17, and B44 code requirements for elevator phones
- Designed for PoE at 802.3af or 12vdc power source with battery backup
- Programmable with up to 5 emergency numbers
- Recordable location message (18 seconds)
- If installation requires phone line verification, must use an In Car Analog Phone with Remote IP Interface (2100-VOIPLC)
- On-site programming
- Pictorial keypad
- Can place a call either on IP Network or VoIP service provider
- Includes one FXS port, one LAN and one WAN port
- VoIP protocols: IPv4, TCP, UDP, DHCP, SNTP, STUN, HTTP, and PPPoE
- Connections: FXS RJ11, LAN, and WAN RJ45 (10/100 BaseT)
- Temperature range -40F to +150F
- Automatic dialer (31 digit programmable memory)
- Automatic answer feature with audible ring
- 3 year warranty