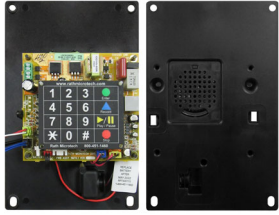


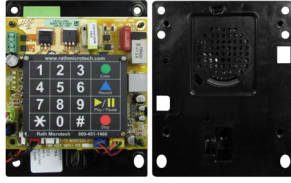


**Contact Us
 For Direct
 Mount
 Competitor
 Plates**

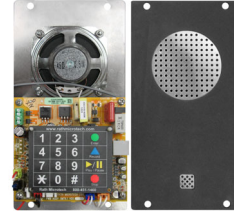
Behind the Panel Mount



Model Number: 2100-957RIP
Size: 8-1/8" H x 5-1/8" W



Model Number: 2100-907RIP
Size: 5-3/8" H x 4-1/2" W



Model Number: 2100-957CIP
Size: 8-1/3" H x 4-1/2" W

Flush/Panel Mount



Model Number: 2100-958DIP
Size: 12-1/2" H x 10-5/8" W
Style: Brushed Stainless Steel
Options: Mirrored Stainless Steel



Model Number: 2100-958SIP
Plate Size: 12-1/2" H x 9-3/4" W
Back Box: 8" H x 6" W x 3" D
Style: Brushed Stainless Steel



Model Number: 2100-958NSIP
Plate Size: 9-1/2" H x 7-1/2" W
Back Box: 8" H x 6" W x 3" D
Style: Brushed Stainless Steel



Model Number: 2100-958NMIP
Plate Size: 9-1/2" H x 7-1/2" W
Back Box: 8" H x 6" W x 3" D
Style: Brushed Antique Bronze



Model Number: 2100-958MIP
Plate Size: 12-1/2" H x 9-3/4" W
Back Box: 8" H x 6" W x 3" D
Style: Brushed Antique Bronze

Surface Mount



Model Number: 2100-956SIP
Size: 9" H x 5.92" W x 2.35" D
Style: Stainless Steel



Model Number: 2100-984RIP
Size: 9-1/2" H x 6" W x 2-7/8" D
Style: Red, NEMA 4, Fiberglass

**Custom
 Sizes
 Available**

Features

- Meets all ADA, ASME A17, and B44 code requirements for elevator phones
- Designed for PoE at 802.3af or 12vdc power source with battery backup
- Programmable with up to 5 emergency numbers
- Recordable location message (18 seconds)
- If installation requires phone line verification, must use an In Car Analog Phone with Remote IP Interface (2100-VOIPLC)
- On-site programming
- Pictorial keypad
- Can place a call either on IP Network or VoIP service provider
- Includes one FXS port, one LAN and one WAN port
- VoIP protocols: IPv4, TCP, UDP, DHCP, SNTP, STUN, HTTP, and PPPoE
- Connections: FXS RJ11, LAN, and WAN RJ45 (10/100 BaseT)
- Temperature range -40F to +150F
- Automatic dialer (31 digit programmable memory)
- Automatic answer feature with audible ring
- 3 year warranty

