



Installation & Operations Manual



2500-VOIPM IP Supervisor



Thank you for purchasing RATH's 2500-VOIPM. We are the largest Emergency Communication Manufacturer in North America and have been in business for over 35 years.

We take great pride in our products, service, and support. Our Emergency Products are of the highest quality. Our experienced customer support teams are available to remotely assist with site preparation, installation, and maintenance. It is our sincere hope that your experience with us has and will continue to surpass your expectations.

Thank you for your business,

The RATH® Team

Table of Contents

| | |
|--|---------------|
| Items Needed | Page 3 |
| Connecting Power | Page 3 |
| System Login | Page 3 |
| Date and Time Configuration | Page 4 |
| Accessing Script | Page 4 |
| Changing Script | Page 5 |
| Relay Module | Page 6 |

Items Needed

- Ethernet Cable (provided)
- PC with Network Interface Card attached to same network as SIP Server
- Battery backed up 120vac power source

Connecting Power

1. Make sure power is turned off
2. Remove the terminal connector from the Primary Control Unit
3. Connect power transformer to the terminals (shown in picture at bottom of page)
4. Reconnect the terminal connector
5. Apply power (Primary Control Unit requires 10 to 15 seconds after it boots up to become operational)

DO NOT attempt to connect wires to terminal connector while attached to Primary Control Unit. Not removing terminal can result in stressing internal components while torquing the screws.

System Login

If IP information is provided and configured by RATH® at time of purchase, skip to Relay Module on page 6.

1. Verify green power LED is illuminated
2. Connect the Ethernet port to Ethernet switch or router on same network as PC, or to NIC card on PC directly
3. Change computer IP address
 - a. Navigate to Control Panel
 - b. Navigate to Network Settings
 - c. Change IP to default IP address range of Primary Control Unit (recommended is 192.168.1.80)
 - d. Change Subnet Mask (default is 255.255.255.0)
4. Turn off wireless card on computer (if applicable)
5. Log into web interface of Primary Control Unit
 - a. Enter `http://192.168.1.88/setup.html` into web browser (Google Chrome or Mozilla Firefox is recommended)
 - b. Log into Primary Control Unit**LOGIN: admin PASSWORD: Default1234!**



Primary Control Unit

Date and Time Configuration

The RATH® IP Supervisor uses the date and time for scheduled events such as turning relays on or off at scheduled times, as well as for logging. A time stamp is included with each logged event.

1. Follow instructions on page 3 for logging into web interface on Primary Control Unit
2. Navigate to System from menu on left
3. Click Date and Time

Date/Time: This is the current date and time stored in the RATH® IP Supervisor. The time is stored and displayed in a 24-hour format.

Time Zone Offset: Time servers return the current time to Universal Time (GMT). It is common for many servers and data loggers to use GMT as their official time, even when they are not located within the GMT time zone. The default value for this field is -7 (Mountain Standard Time). For convenience, the time can be converted to local standard time by entering the offset here. This manual cannot include the UTC Offset for all parts of the world, but the offset for GMT time and the four major U.S. time zones are listed here:

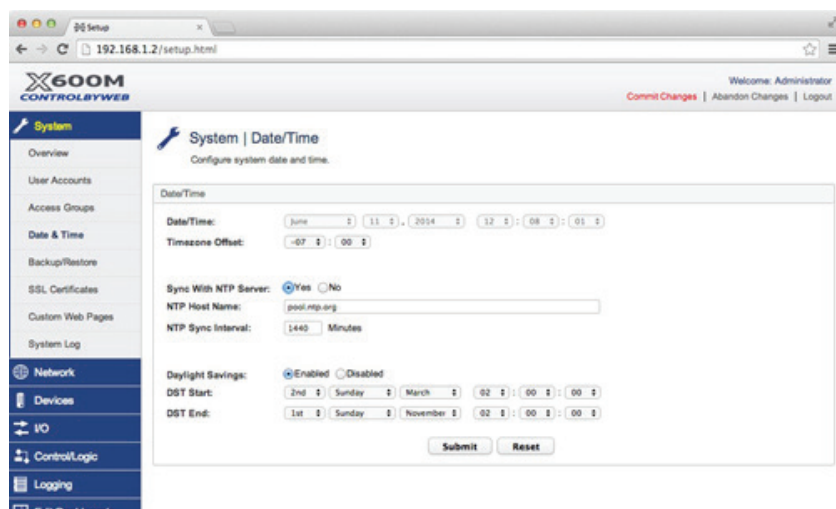
GMT Time: 0

Eastern Standard Time: -5

Central Standard Time: -6

Mountain Standard Time: -7

Pacific Standard Time: -8



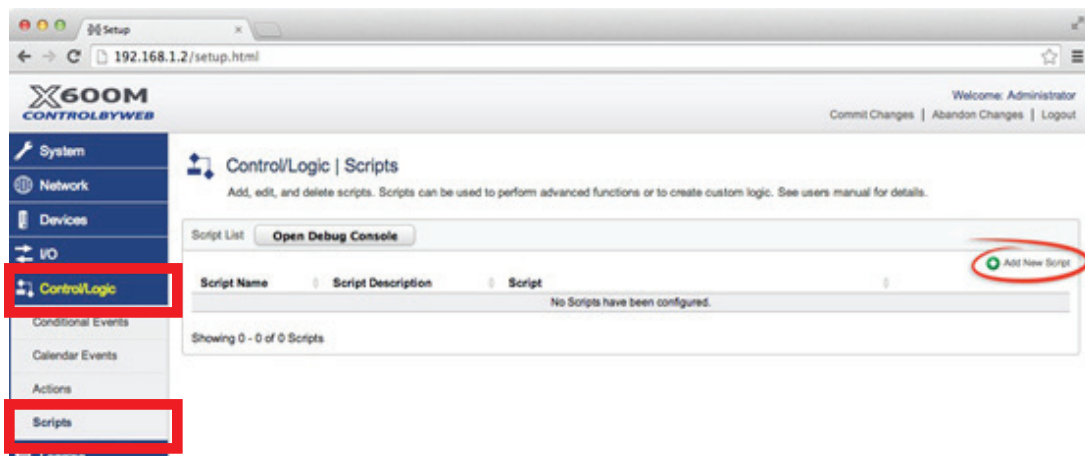
Sync With NTP Server: This selection offers two options for setting the time: **YES** (sync with NTP server) or **NO** (manually). If **Yes** is selected, the Date/Time is grayed out and cannot be manually changed. If **NO** is selected, the current date and time can be entered by selecting the appropriate drop-down box.

Accessing Script

The RATH® IP Supervisor is a programmable network appliance that can monitor availability of specific IP addresses on a given network. The Supervisor uses a pre-written code script to configure network information and frequency of IP status check. To access script, perform the following:

Only access script if changing IP information or frequency of IP status check.

1. Follow instructions on page 3 for logging into web interface on Primary Control Unit
2. Navigate to Control/Logic from menu on left
3. Click Script

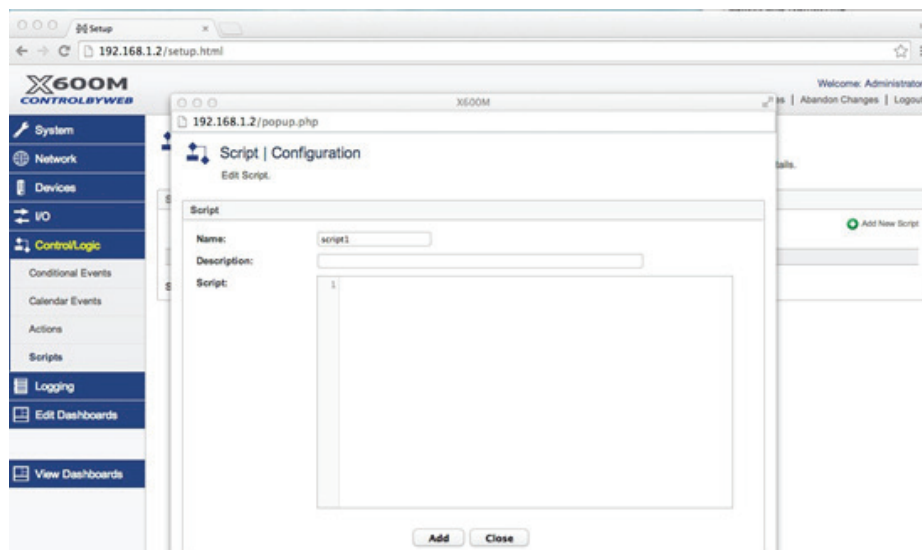


4. To access an existing script, double click on Script Name under Script List

5. Window will pop up containing Script Name, Description, and Script Text

Name: This is a unique user assigned designator for this script

Description: This is a simple description of what the script does for documentation purposes



Changing Script

Scripts are written in accordance with your order and provided IP addresses. If this information was not provided in advance, or if there is a necessary modification, please contact RATH® Tech Support for a script template. After contacting RATH® Tech Support, perform the following steps:

1. Navigate to Start Menu on PC, go to Accessories folder, and open a blank Notepad session
2. Access Script from web interface on Primary Control Unit
 - a. Navigate to Control/Logic
 - b. Click Script
3. Double click on script to be modified
4. Click into text/script area of Script Window and select all (or press Ctrl+A)
5. Right click and copy all selected text (or press Ctrl+C)
6. Go back to blank Notepad page
7. Right click and paste text from web interface in Notepad (or press Ctrl+V)
8. Save script into file named "First Script" (this will save the original script file)

9. Modify ONLY the IP information and the frequency of the ping test as required
10. The frequency of the ping test is located in brackets behind the word sleep near the end of the script
Note: The numeric value inside the brackets is in milliseconds (Example: 1000 in the bracket would repeat the sequence every second. 60000 will repeat the sequence every minute, etc.).
11. Delete unnecessary lines, change addresses, etc.
12. When changes are complete, save script as file named "New Script"
13. Click in the script box on web interface of Primary Control Unit
14. Right click in the box and select all (or press Ctrl+A)
15. Press Delete on keyboard to clear previous script
16. Use text from "New Script" Notepad session, right click in and select all (or press Ctrl+A)
17. Right click and copy (or press Ctrl+C)
18. Click in the script box on the web interface of Primary Control Unit
19. Right click and paste (or press Ctrl+V)
20. Modified script will appear in script section
21. Click the Commit Changes button to save

Relay Module

The RATH® IP Supervisor has two high-current line-voltage-rated relays. It has a large six position plug-in screw terminal connector that provides connections to the relays. The connector can be released by pushing the two orange latches forward, then pulling on the connector housing while squeezing the latches. Terminals are provided for the Common, Normally Open (NO), and Normally Closed (NC) contacts. The connector terminals are wired directly to the internal relays with no internal fuse or other over current protection. When a relay coil is energized, the NO contact is closed and the NC contact is open.

A removable terminal connector is provided for making the power connections. The correct wiring procedure is as follows:

1. Make sure power is turned off
2. Remove the terminal connector from the Relay Module
3. Make wiring connections into terminals and screw down tightly
4. Reconnect the terminal connector
5. Apply power (system requires 10 to 15 seconds after it boots up to become operational)

It is recommended that any load (device to be controlled) not be connected to the expansion modules until after the Relay Module has been configured and tested. By doing this, wiring and configuration mistakes will not cause the load device to turn on unexpectedly.



Relay Module