



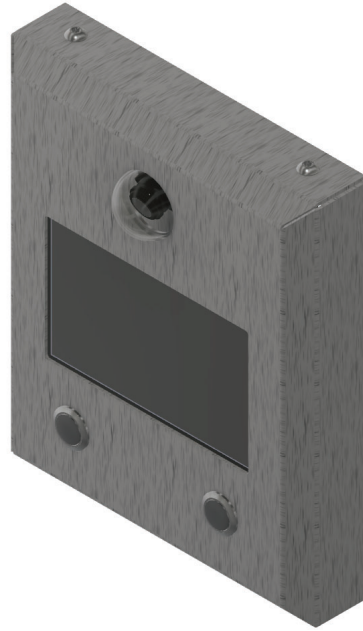
SmartView System
Part #: 2100-SVSCOMP

Features:

- **Overall Dimensions:** 7.5" H x 7" W x 1.25" D
- **Operating Temperature:** 32°F to 158°F (0°C to 70°C)
- **Power Requirement:** Powered by the SmartView Controller
- Surface mount
- All-in-one mounting box includes Display, Camera, and Buttons
- Includes a 16' cable to connect the Camera to the SmartView Controller, 20' HDMI cable to connect the Display, and 20' wire to connect the YES/NO Buttons
- Compatible with the SmartView Software
- SmartView Controller Board sold separately
- **Data Usage:** 4.4 mb/minute in active state
0 in idle state (pings every 24 hours)
- **Current Draws**
 - Board:** 12v = 1A, 24v = 0.5A
 - Camera:** 5v = 0.12A (powered by board)
 - Display:** 5v = 0.59A (powered by board)
 - Total:** 12v = 1.46A, 24v = 0.73A



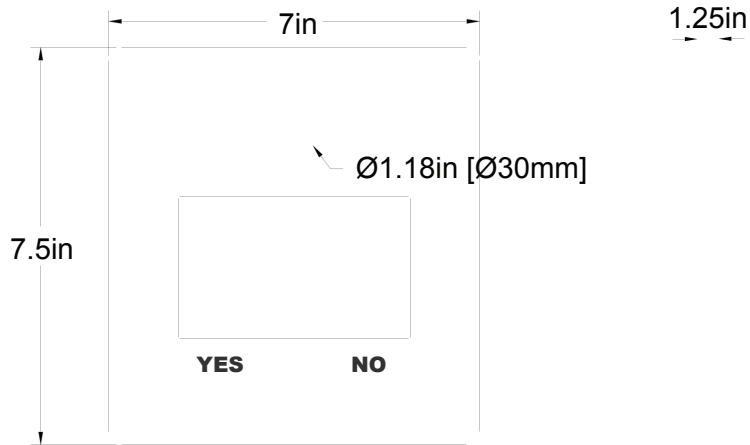
Front View



Angled View

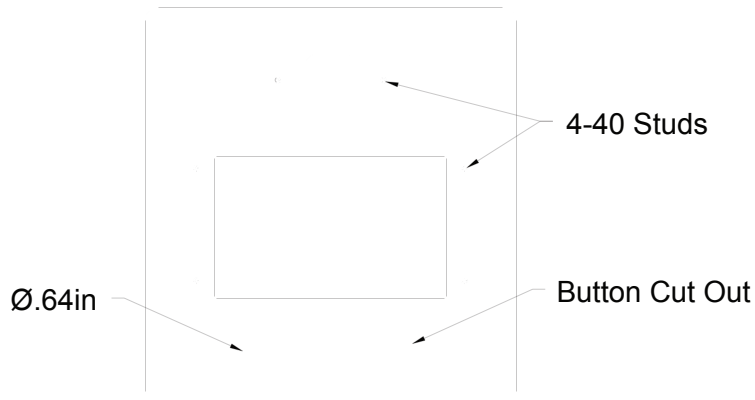


Side View



Front

Side



Front