

SmartView Controller
Part #: 2100-SVCB & 2100-SVCB-1

Features:

- **Overall Dimensions:** 6.99" H x 12.04" W x 1.98" D
- **Operating Temperature:** 32° F to 158° F (0° C to 70° C)
- **Power Requirement:** 12v or 24v power supply or POE
- **2100-SVCB:** *Press Yes or No Button*
- **2100-SVCB-1:** *Press Door Open for Yes, Press Door Closed for No*
- Compatible with the SmartView Software
- Compatible with the SmartView Display
- Connection for the SmartView Camera
- Dry contacts for Yes/No inputs
- Controller Board features a uniquely assigned ID address for easy software setup
- Requires CAT5 or better Ethernet connection or connection to a 2-wire extender
- Requires power from the elevator or remotely in the machine or electrical room
- Mounting box included
- Certified to CSA Standard B44.1, conforms to ASME Standard 17.5
- **Data Usage:** 4.4 mb/minute in active state, 0 in idle state (pings every 24 hours)
- **Current Draw**

Active:

12v = 1A

24v = 0.5A

Idle:

12v = 0.5A

24v = 0.25A

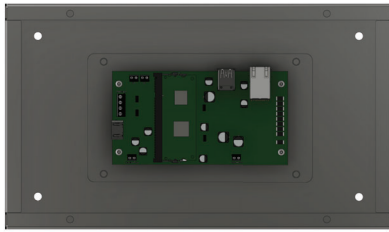
Installation Requirements:

1. Internet Connection:

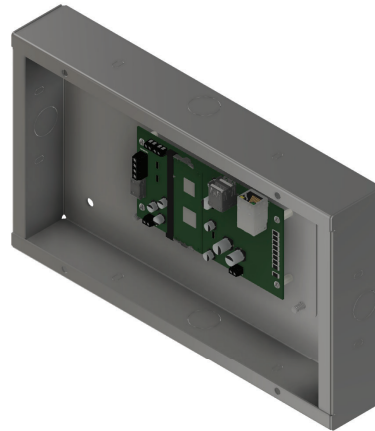
- Routed internet connection using DHCP, OR
- Cellular modem with data (available from RATH®)

2. Laptop with a network connection for testing

RATH 2100-SVCB & 2100-SVCB-1



Front View



Angled View



Side View

