

**SmartView Controller**  
**Part #: 2100-SVCB & 2100-SVCB-1**

**Features:**

- **Overall Dimensions:** 6.99" H x 12.04" W x 1.98" D
- **Operating Temperature:** 32° F to 158° F (0° C to 70° C)
- **Power Requirement:** 12v or 24v power supply or POE
- **2100-SVCB:** *Press Yes or No Button*
- **2100-SVCB-1:** *Press Door Open for Yes, Press Door Closed for No*
- Compatible with the SmartView Software
- Compatible with the SmartView Display and CE Elite Pi Display  
(Notify RATH® if you are using a CE Elite Pi Display when placing an order so the Controller can be pre-programmed appropriately)
- Connection for the SmartView Camera
- Dry contacts for Yes/No inputs
- Controller Board features a uniquely assigned ID address for easy software setup
- Requires CAT5 or better Ethernet connection or connection to a 2-wire extender
- Requires power from the elevator or remotely in the machine or electrical room
- Mounting box included
- Certified to CSA Standard B44.1, conforms to ASME Standard 17.5
- **Data Usage:** 4.4 mb/minute in active state  
0 in idle state (pings every 24 hours)

• **Current Draw**

**Active:**

12v = 1A

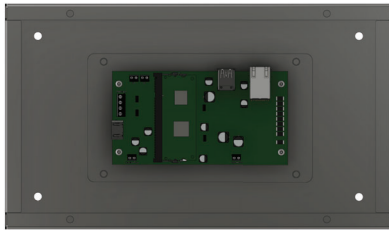
24v = 0.5A

**Idle:**

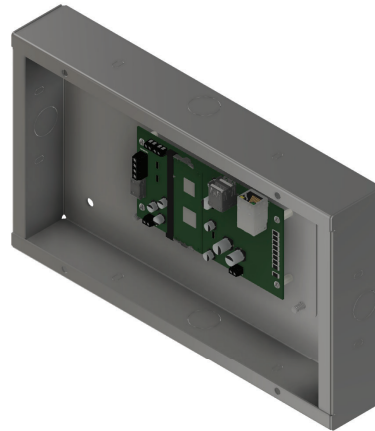
12v = 0.5A

24v = 0.25A

**RATH** 2100-SVCB & 2100-SVCB-1



Front View



Angled View



Side View

