

SmartView Controller
Part #s: 2100-SVC & 2100-SVC-1

Features:

- **Overall Dimensions:** 4" H x 7" W x 1.2" D
- **Operating Temperature:** 32° F to 158° F (0° C to 70° C)
- **Power Requirement:** 12v or 24v power supply or POE
- **2100-SVC:** *Press Yes or No Button*
- **2100-SVC-1:** *Press Door Open for Yes, Press Door Closed for No*
- Compatible with the SmartView Software
- Compatible with the SmartView Display
- Connection for the SmartView Camera
- Dry contacts for Yes/No inputs
- Controller Board features a uniquely assigned ID address for easy software setup
- Requires CAT5 or better Ethernet connection or connection to a 2-wire extender
- Requires power from the elevator or remotely in the machine or electrical room
- Mounting plate included
- Certified to CSA Standard B44.1, conforms to ASME Standard 17.5
- **Data Usage:** 4.4 mb/minute in active state, 0 in idle state (pings every 24 hours)
- **Current Draw**

Active:

12v = 1A
24v = 0.5A

Idle:

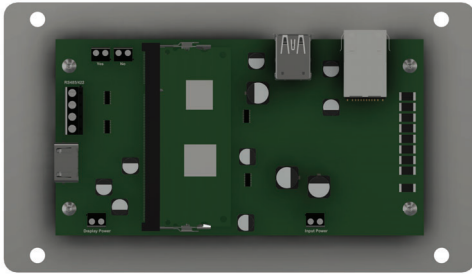
12v = 0.5A
24v = 0.25A

Installation Requirements:

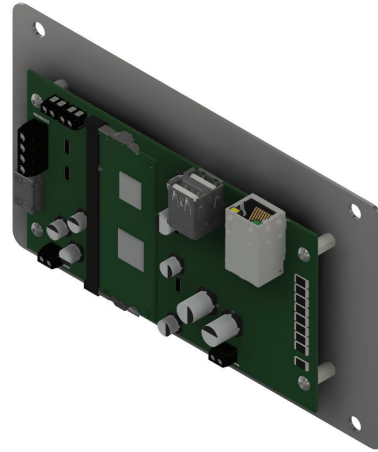
1. Internet Connection:

- Routed internet connection using DHCP, OR
- Cellular modem with data (available from RATH®)

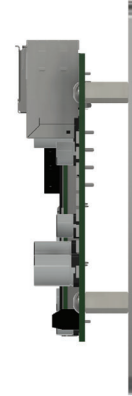
2. Laptop with a network connection for testing



Front View

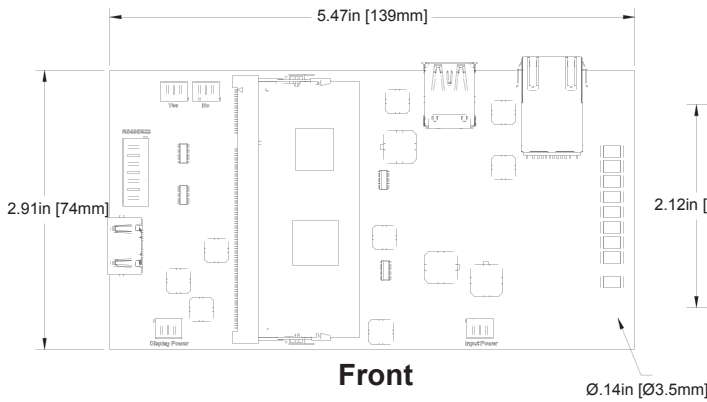


Angled View

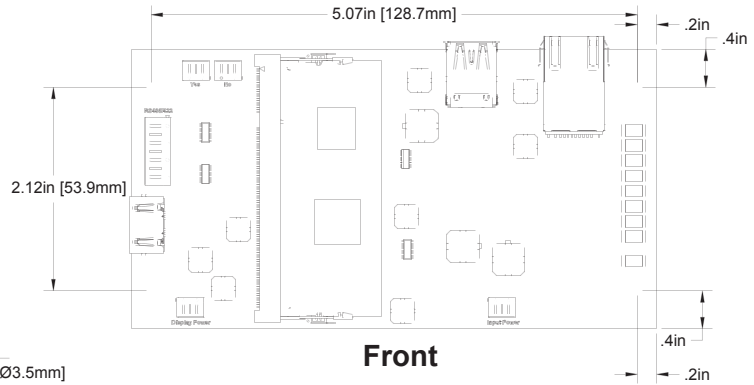


Side View

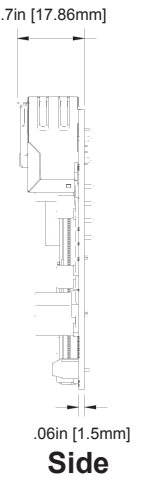
Controller Board:



Front

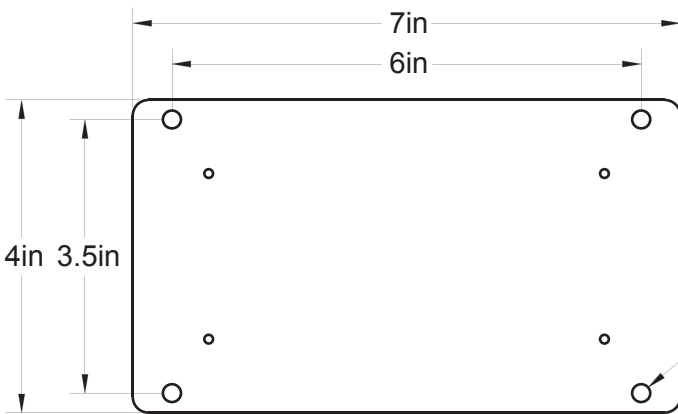


Front



Side

Mounting Plate:



Front



Side