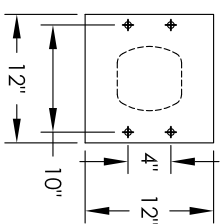
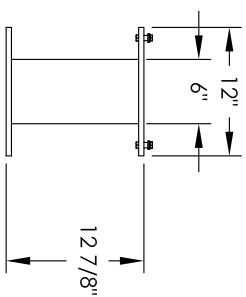
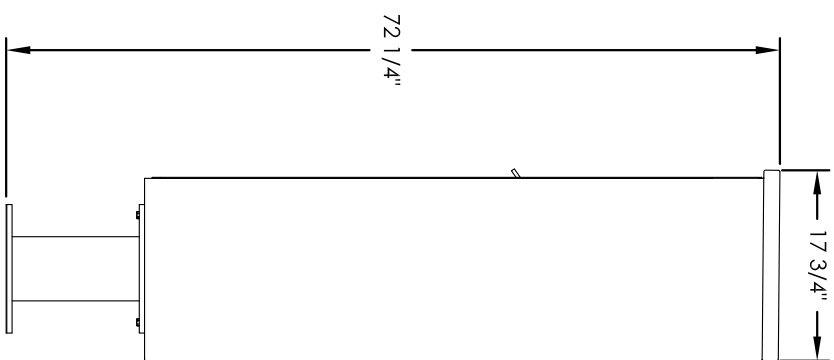
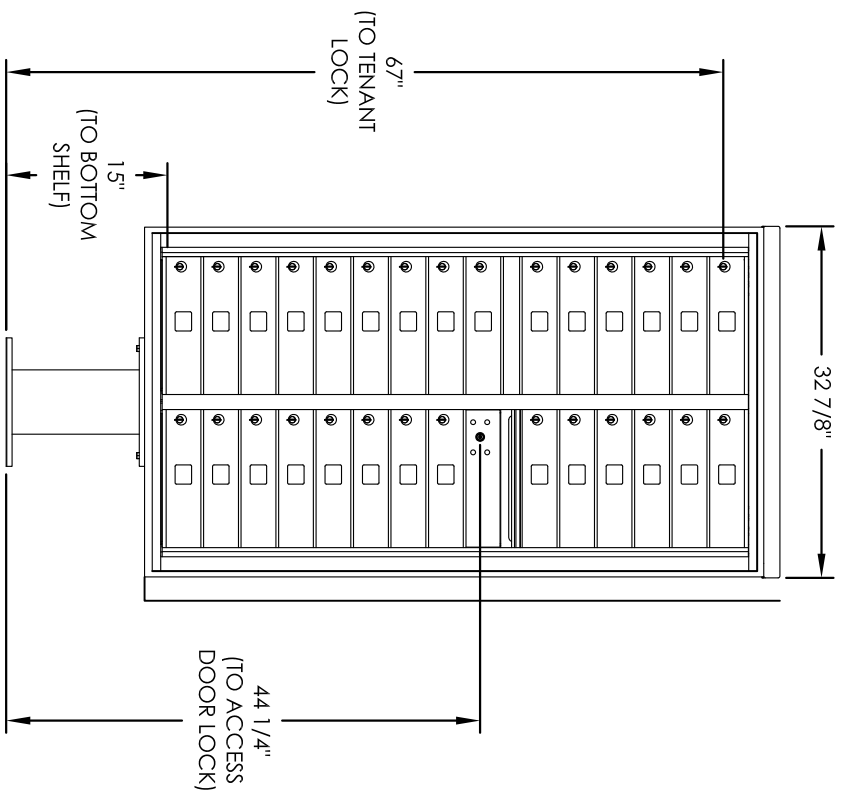


Versatile™ 4C Pedestal Mount Mailbox, 4C16D-29-P



PEDESTAL DETAIL

COMPARTMENT CHART

DESCRIPTION	COMPARTMENT	COMPARTMENT SIZE	QTY.
MAILBOX	MB1	3" H x 12" W x 15" D	29
OUTGOING MAIL	OM1	3" H x 12" W x 15" D	1

PRODUCT SERIES: VERSATILE™ 4C PEDESTAL MOUNT MAILBOX

- Notes:
- This module does NOT meet USPS STD-4C installation specification requirements as shown below:
 - At least one customer compartment shall be positioned less than 48" above finished floor (AFF).
 - No parcel locker (interior bottom shelf) shall be positioned less than 15" AFF.
 - No patron (tenant) lock shall be positioned more than 67" AFF.
 - No customer compartment (interior bottom shelf) shall be positioned less than 28" AFF.
 - The USPS Arrow lock shall be positioned 36"-48" AFF.
 - This 4C mailbox is to be used for private applications.
 - The rough opening width for multi-unit 4C installations = (the sum of all actual unit widths) - 1/8".

MODEL	REV	SCALE	LAST REV DATE
4C16D-29-P	D	NONE	5/14/2014
DRAWING NUMBER	DRAWN BY		
4C16D-29-PCS	SDH		