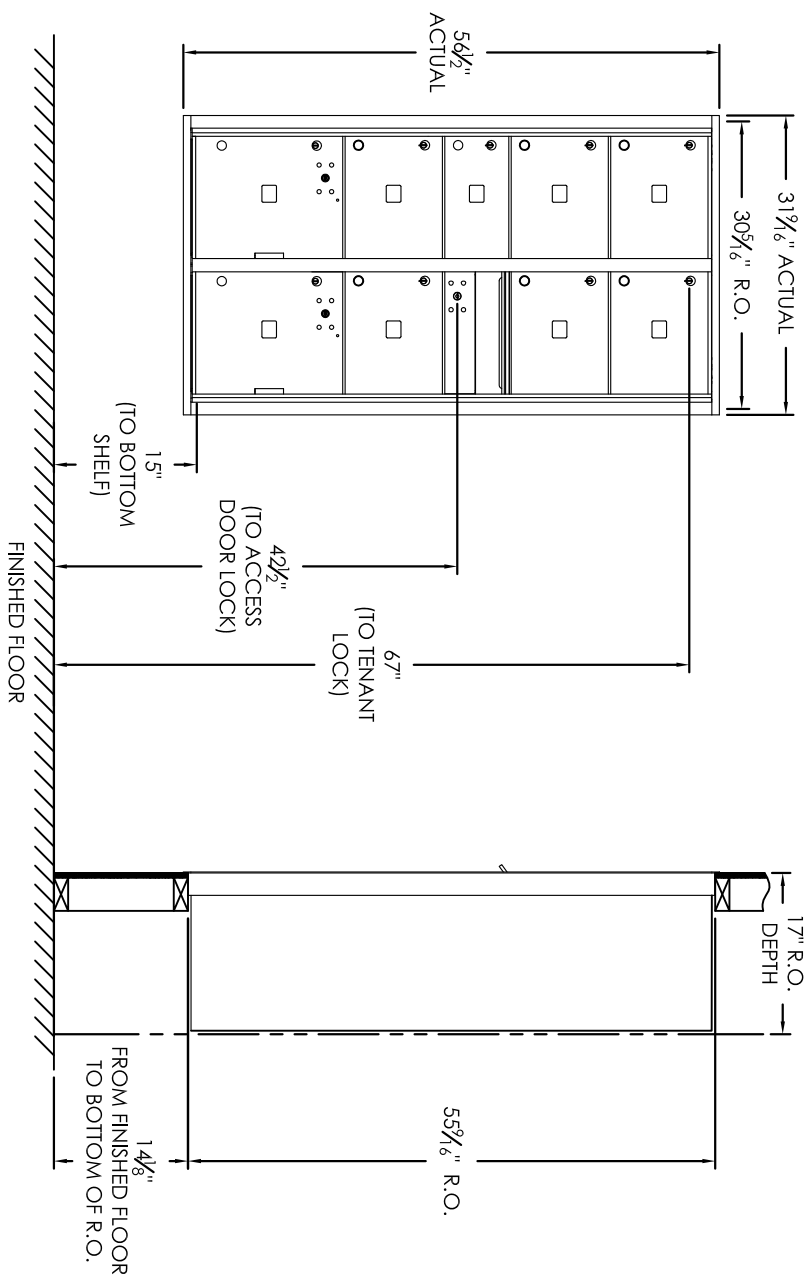


# Versatile™ 4C Mailbox, 4C16D-07



COMPARTMENT CHART

DESCRIPTION	COMPARTMENT	COMPARTMENT SIZE	QTY.
MAIL BOX	MB2	6-1/2" H x 12" W x 15" D	1
MAIL BOX	MB3	10" H x 12" W x 15" D	6
OUTGOING MAIL	OM2	6-1/2" H x 12" W x 15" D	1
PARCEL LOCKER	PL15	15" H x 12" W x 15" D	2

PRODUCT SERIES: VERSATILE™ 4C FRONT LOAD MAILBOX

MODEL	REV
4C16D-07	B
SCALE	LAST REV DATE
NONE	5/15/2014
DRAWING NUMBER	DRAWN BY
4C16D-07CS	SDH

**Notes:**

1. This module meets the USPS STD-4C requirements for installation defined below when the mailbox is installed per the dimensions provided on this drawing.
  - a. At least one customer compartment shall be positioned less than 48" above finished floor (AFF).
  - b. No parcel locker (interior bottom shelf) shall be positioned less than 15" AFF.
  - c. No patron (tenant) lock shall be positioned more than 67" AFF.
  - d. No customer compartment (interior bottom shelf) shall be positioned less than 28" AFF.
  - e. The USPS Arrow lock shall be positioned 36"-48" AFF.
2. This 4C mailbox can also be used for private applications.
3. The rough opening width for multi-unit 4C installations = (the sum of all actual unit widths) - 1 1/8".