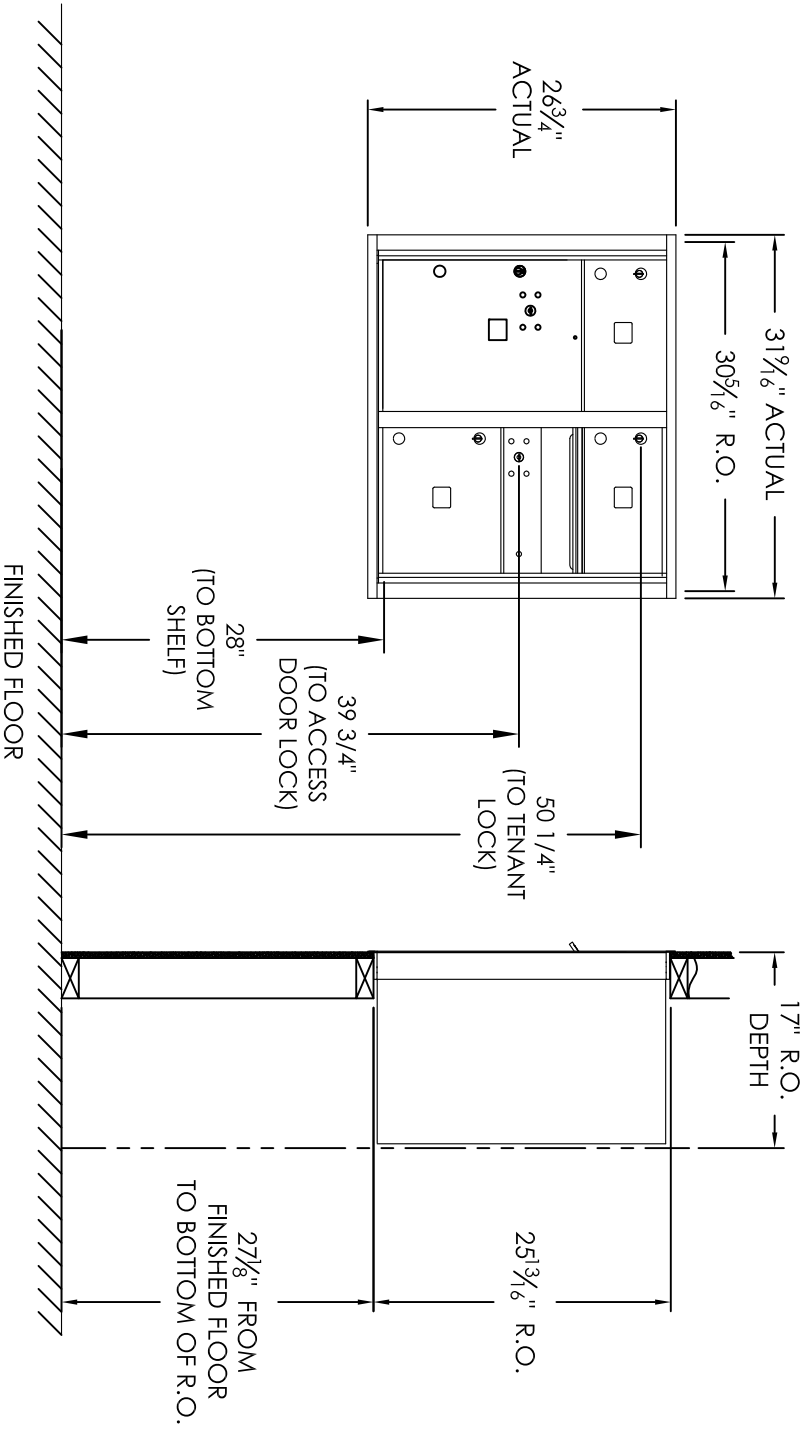


Versatile™ 4C Mailbox, 4C07D-03



COMPARTMENT CHART

DESCRIPTION	COMPARTMENT	COMPARTMENT SIZE	QTY.
MAILBOX	MB2	6-1/2" H x 12" W x 15" D	2
MAILBOX	MB3	10" H x 12" W x 15" D	1
OUTGOING MAIL	OM2	6-1/2" H x 12" W x 15" D	1
PARCEL	PL5	17" H x 12" W x 15" D	1

PRODUCT SERIES: VERSATILE™ 4C FRONT LOAD MAILBOX

Notes:
 1. This module meets the USPS STD-4C requirements for installation defined below when the mailbox is installed per the dimensions provided on this drawing.

- a. At least one customer compartment shall be positioned less than 48" above finished floor (AFF).
 - b. No parcel locker (interior bottom shelf) shall be positioned less than 15" AFF.
 - c. No patron (tenant) lock shall be positioned more than 67" AFF.
 - d. No customer compartment (interior bottom shelf) shall be positioned less than 28" AFF.
 - e. The USPS Arrow lock shall be positioned 36"-48" AFF.
2. This 4C mailbox can also be used for private applications.
 3. The rough opening width for multi-unit 4C installations = (the sum of all actual unit widths) - 1 7/8".

MODEL	4C07D-03	REV	G
SCALE	NONE	LAST REV DATE	5/15/14
DRAWING NUMBER	4C07D-03CS	DRAWN BY	RS