

FMA11 P K



45 Degree Face Milling Series

- Cutter is PVD coated for superior corrosion and heat resistance.
- 8 Cutting Edges.
- Available in 3 inserts sizes and 2 wipers.

Kit Code	Kit Description	Cutter	Insert	Price (USD)
KIT1-FMA11-01-01	FMA11-2.00"-A0.75"-SN12-04C-GMYBM253	FMA11-2.00"-A0.75"-SN12-04C	SNEG1205ANR-GM YBM253	\$188.10
KIT1-FMA11-01-02	FMA11-2.00"-A0.75"-SN12-04C-GMYBD152	FMA11-2.00"-A0.75"-SN12-04C	SNEG1205ANR-GM YBD152	\$188.10
KIT1-FMA11-01-03	FMA11-2.00"-A0.75"-SN12-04C-GMYBG205	FMA11-2.00"-A0.75"-SN12-04C	SNEG1205ANR-GM YBG205	\$188.10
KIT1-FMA11-02-01	FMA11-2.50"-A0.75"-SN12-06C-GMYBM253	FMA11-2.50"-A0.75"-SN12-06C	SNEG1205ANR-GM YBM253	\$236.01
KIT1-FMA11-02-02	FMA11-2.50"-A0.75"-SN12-06C-GMYBD152	FMA11-2.50"-A0.75"-SN12-06C	SNEG1205ANR-GM YBD152	\$236.01
KIT1-FMA11-02-03	FMA11-2.50"-A0.75"-SN12-06C-GMYBG205	FMA11-2.50"-A0.75"-SN12-06C	SNEG1205ANR-GM YBG205	\$236.01
KIT1-FMA11-03-01	FMA11-3.00"-A1.00"-SN12-07C-GMYBM253	FMA11-3.00"-A1.00"-SN12-07C	SNEG1205ANR-GM YBM253	\$266.87
KIT1-FMA11-03-02	FMA11-3.00"-A1.00"-SN12-07C-GMYBD152	FMA11-3.00"-A1.00"-SN12-07C	SNEG1205ANR-GM YBD152	\$266.87
KIT1-FMA11-03-03	FMA11-3.00"-A1.00"-SN12-07C-GMYBG205	FMA11-3.00"-A1.00"-SN12-07C	SNEG1205ANR-GM YBG205	\$266.87
KIT1-FMA11-04-01	FMA11-4.00"-B1.25"-SN12-07-GMYBM253	FMA11-4.00"-B1.25"-SN12-07	SNEG1205ANR-GM YBM253	\$252.51
KIT1-FMA11-04-02	FMA11-4.00"-B1.25"-SN12-07-GMYBD152	FMA11-4.00"-B1.25"-SN12-07	SNEG1205ANR-GM YBD152	\$252.51
KIT1-FMA11-04-03	FMA11-4.00"-B1.25"-SN12-07-GMYBG205	FMA11-4.00"-B1.25"-SN12-07	SNEG1205ANR-GM YBG205	\$252.51
KIT1-FMA11-05-01	FMA11-3.00"-A1.00"-SN15-07C-GRYBM253	FMA11-3.00"-A1.00"-SN15-07C	SNEG1506ANR-GR YBM253	\$284.68
KIT1-FMA11-05-02	FMA11-3.00"-A1.00"-SN15-07C-GRYBD152	FMA11-3.00"-A1.00"-SN15-07C	SNEG1506ANR-GR YBD152	\$284.68
KIT1-FMA11-05-03	FMA11-3.00"-A1.00"-SN15-07C-GRYBG205	FMA11-3.00"-A1.00"-SN15-07C	SNEG1506ANR-GR YBG205	\$284.68
KIT1-FMA11-06-01	FMA11-4.00"-B1.50"-SN15-09-GRYBM253	FMA11-4.00"-B1.50"-SN15-09	SNEG1506ANR-GR YBM253	\$359.43
KIT1-FMA11-06-02	FMA11-4.00"-B1.50"-SN15-09-GRYBD152	FMA11-4.00"-B1.50"-SN15-09	SNEG1506ANR-GR YBD152	\$359.43
KIT1-FMA11-06-03	FMA11-4.00"-B1.50"-SN15-09-GRYBG205	FMA11-4.00"-B1.50"-SN15-09	SNEG1506ANR-GR YBG205	\$359.43

- Each kit price above includes 1 cutter and 10 inserts, wrench, grease and brochure.
- For more details, please refer to our catalog.

Recommended cutting parameters

Workpiece material	Hardness HB	Grade	Cutting data			
			V(SFPM)	f(inch/z)	a _{pmax} (inch)	
P	Low carbon steel Soft steel	≤ 180	YBM253/YBC302/ YBG205/YB9320	880 (720-1200)	0.008 (0.004-0.016)	0.216(SN12) 0.275(SN15) 0.354(SN19)
	High carbon steel Alloy steel	180-280	YBM253/YBC302/ YBG205/YB9320	850 (650-1050)	0.008 (0.004-0.016)	
	Alloy tool steel	280-350	YBM253/YBC302/ YBG205/YB9320	780 (590-1000)	0.008 (0.004-0.016)	
K	Cast iron	180-250	YBD152	880 (490-980)	0.012(0.004-0.02)	
			YBD252	650 (490-820)	0.016 (0.008-0.024)	

FMA12 **P** **M** **K**



45 Degree Face Milling Series

- High Performance 16 edges.
- Unique 3D edge design.
- Double negative rake angle with helical insert design creates double positive axial angle for reduced cutting tool forces.

Kit Code	Kit Description	Cutter	Insert	Price (USD)
KIT1-FMA12-01-01	FMA12-2.50"-A0.75"-ON08-05-GMYBM253	FMA12-2.50"-A0.75"-ON08-05	ONHU08T624R-GM YBM253	\$241.42
KIT1-FMA12-01-02	FMA12-2.50"-A0.75"-ON08-05-GMYBG205	FMA12-2.50"-A0.75"-ON08-05	ONHU08T624R-GM YBG205	\$241.42
KIT1-FMA12-01-03	FMA12-2.50"-A0.75"-ON08-05-GMYBD152	FMA12-2.50"-A0.75"-ON08-05	ONHU08T624R-GM YBD152	\$241.42
KIT1-FMA12-02-01	FMA12-3.00"-A1.00"-ON08-06-GMYBM253	FMA12-3.00"-A1.00"-ON08-06	ONHU08T624R-GM YBM253	\$261.97
KIT1-FMA12-02-02	FMA12-3.00"-A1.00"-ON08-06-GMYBG205	FMA12-3.00"-A1.00"-ON08-06	ONHU08T624R-GM YBG205	\$261.97
KIT1-FMA12-02-03	FMA12-3.00"-A1.00"-ON08-06-GMYBD152	FMA12-3.00"-A1.00"-ON08-06	ONHU08T624R-GM YBD152	\$261.97
KIT1-FMA12-03-01	FMA12-4.00"-B1.25"-ON08-07-GMYBM253	FMA12-4.00"-B1.25"-ON08-07	ONHU08T624R-GM YBM253	\$292.13
KIT1-FMA12-03-02	FMA12-4.00"-B1.25"-ON08-07-GMYBG205	FMA12-4.00"-B1.25"-ON08-07	ONHU08T624R-GM YBG205	\$292.13
KIT1-FMA12-03-03	FMA12-4.00"-B1.25"-ON08-07-GMYBD152	FMA12-4.00"-B1.25"-ON08-07	ONHU08T624R-GM YBD152	\$292.13

- Each kit price above includes 1 cutter and 10 inserts, wrench, grease and brochure.
- For more details, please refer to our catalog.

Recommended cutting parameters

	Workpiece material	Hardness HB	Grade	Cutting data		
				Cutting speed (SFPM)	Feed per tooth(in)	a_{pmax} (in)
P	Low carbon steel	≤180	YBM253 YBG205	900(700-1100)	0.008(0.004-0.012)	0.197
	Alloy steel	180-350	YBM253 YBG205	800(600-1000)	0.006(0.004-0.012)	0.197
M	Stainless steel	≤270	YBM253 YBG205	750 (600-950) 500 (360-900)	0.006 (0.004-0.012)	0.197
K	Cast iron	180-260	YBD152	900(500-950)	0.008(0.004-0.012)	0.197

FMD02 P K



67 Degree Face Milling Series

- High Performance 10 edges.
- First choice for face milling cast iron .
- Open chip breaker and large rake angle design, suitable for machines of different power.

Kit Code	Kit Description	Cutter	Insert	Price (USD)
KIT1-FMD02-01-01	FMD02-2.00"-A0.75"-PN11-05-CMYBD152	FMD02-2.00"-A0.75"-PN11-05	PNEG110512R-CM YBD152	\$201.69
KIT1-FMD02-01-02	FMD02-2.00"-A0.75"-PN11-05-PMYBC302	FMD02-2.00"-A0.75"-PN11-05	PNEG110512R-PM YBC302	\$201.69
KIT1-FMD02-02-01	FMD02-2.50"-A0.75"-PN11-06-CMYBD152	FMD02-2.50"-A0.75"-PN11-06	PNEG110512R-CM YBD152	\$221.57
KIT1-FMD02-02-02	FMD02-2.50"-A0.75"-PN11-06-PMYBC302	FMD02-2.50"-A0.75"-PN11-06	PNEG110512R-PM YBC302	\$221.57
KIT1-FMD02-03-01	FMD02-3.00"-A1.00"-PN11-08-CMYBD152	FMD02-3.00"-A1.00"-PN11-08	PNEG110512R-CM YBD152	\$254.46
KIT1-FMD02-03-02	FMD02-3.00"-A1.00"-PN11-09-PMYBC302	FMD02-3.00"-A1.00"-PN11-08	PNEG110512R-PM YBC302	\$254.46
KIT1-FMD02-04-01	FMD02-4.00"-B1.25"-PN11-10-CMYBD152	FMD02-4.00"-B1.25"-PN11-10	PNEG110512R-CM YBD152	\$332.60
KIT1-FMD02-04-02	FMD02-4.00"-B1.25"-PN11-10-PMYBC302	FMD02-4.00"-B1.25"-PN11-10	PNEG110512R-PM YBC302	\$332.60

- Each kit price above includes 1 cutter and 10 inserts, wrench, grease and brochure.
- CM chip breaker is recommended for milling ISO K materials, while PM chip breaker is for ISO P materials.
- For more details, please refer to our catalog.

Recommended cutting parameters

Workpiece material	Hardness HB	Insert grade	Cutting parameters				
			V(SFPM)	f(in/z)			
				PF	PM	PR	
P	Low carbon steel, Soft steel	≤ 180	YBC302 YBM253	900(700-1100)	0.006(0.004-0.008)	0.008(0.004-0.012)	0.012(0.008-0.016)
	High-carbon steel, Alloy steel	180-280		850(650-1000)	0.006(0.004-0.008)	0.008(0.004-0.012)	0.012(0.008-0.016)
	Alloy tool steel	280-350		800(600-950)	0.006(0.004-0.008)	0.008(0.004-0.012)	0.012(0.008-0.016)
K	Cast iron	180-250	YBD152	900(500-1000)	CF	CM	CR
					0.006(0.004-0.008)	0.008(0.004-0.012)	0.012(0.008-0.016)

FMP12 P K



90 Degree Face Milling Series

- High Performance 6 edges.
- 90° approach angle can be used for shoulder milling, face milling, groove milling, etc.
- Double negative angle tool body combined with unique insert to achieve double positive tool angle, reducing cutting forces.

Kit Code	Kit Description	Cutter	Insert	Price (USD)
KIT2-FMP12-01-01	FMP12-1.00"-XP1.00"-WN06-02C-GMYBM253	FMP12-1.00"-XP1.00"-WN06-02C	WNHU060408PNR-GM YBM253	\$133.64
KIT2-FMP12-01-02	FMP12-1.00"-XP1.00"-WN06-02C-GMYBD152	FMP12-1.00"-XP1.00"-WN06-02C	WNHU060408PNR-GM YBD152	\$133.64
KIT2-FMP12-01-03	FMP12-1.00"-XP1.00"-WN06-02C-GMYBG205	FMP12-1.00"-XP1.00"-WN06-02C	WNHU060408PNR-GM YBG205	\$133.64
KIT2-FMP12-02-01	FMP12-1.25"-XP1.00"-WN06-03C-GMYBM253	FMP12-1.25"-XP1.00"-WN06-03C	WNHU060408PNR-GM YBM253	\$161.05
KIT2-FMP12-02-02	FMP12-1.25"-XP1.00"-WN06-03C-GMYBD152	FMP12-1.25"-XP1.00"-WN06-03C	WNHU060408PNR-GM YBD152	\$161.05
KIT2-FMP12-02-03	FMP12-1.25"-XP1.00"-WN06-03C-GMYBG205	FMP12-1.25"-XP1.00"-WN06-03C	WNHU060408PNR-GM YBG205	\$161.05
KIT2-FMP12-03-01	FMP12-1.50"-XP1.25"-WN06-04C-GMYBM253	FMP12-1.50"-XP1.25"-WN06-04C	WNHU060408PNR-GM YBM253	\$188.54
KIT2-FMP12-03-02	FMP12-1.50"-XP1.25"-WN06-04C-GMYBD152	FMP12-1.50"-XP1.25"-WN06-04C	WNHU060408PNR-GM YBD152	\$188.54
KIT2-FMP12-03-03	FMP12-1.50"-XP1.25"-WN06-04C-GMYBG205	FMP12-1.50"-XP1.25"-WN06-04C	WNHU060408PNR-GM YBG205	\$188.54
KIT1-FMP12-04-01	FMP12-2.00"-A0.75"-WN06-05C-GMYBM253	FMP12-2.00"-A0.75"-WN06-05C	WNHU060408PNR-GM YBM253	\$217.99
KIT1-FMP12-04-02	FMP12-2.00"-A0.75"-WN06-05C-GMYBD152	FMP12-2.00"-A0.75"-WN06-05C	WNHU060408PNR-GM YBD152	\$217.99
KIT1-FMP12-04-03	FMP12-2.00"-A0.75"-WN06-05C-GMYBG205	FMP12-2.00"-A0.75"-WN06-05C	WNHU060408PNR-GM YBG205	\$217.99
KIT1-FMP12-05-01	FMP12-2.50"-A0.75"-WN08-05C-GMYBM253	FMP12-2.50"-A0.75"-WN08-05C	WNHU080608PNR-GM YBM253	\$232.49
KIT1-FMP12-05-02	FMP12-2.50"-A0.75"-WN08-05C-GMYBD152	FMP12-2.50"-A0.75"-WN08-05C	WNHU080608PNR-GM YBD152	\$232.49
KIT1-FMP12-05-03	FMP12-2.50"-A0.75"-WN08-05C-GMYBG205	FMP12-2.50"-A0.75"-WN08-05C	WNHU080608PNR-GM YBG205	\$232.49
KIT1-FMP12-06-01	FMP12-3.00"-A1.00"-WN08-06C-GMYBM253	FMP12-3.00"-A1.00"-WN08-06C	WNHU080608PNR-GM YBM253	\$260.63
KIT1-FMP12-06-02	FMP12-3.00"-A1.00"-WN08-06C-GMYBD152	FMP12-3.00"-A1.00"-WN08-06C	WNHU080608PNR-GM YBD152	\$260.63
KIT1-FMP12-06-03	FMP12-3.00"-A1.00"-WN08-06C-GMYBG205	FMP12-3.00"-A1.00"-WN08-06C	WNHU080608PNR-GM YBG205	\$260.63
KIT1-FMP12-07-01	FMP12-4.00"-B1.25"-WN08-08-GMYBM253	FMP12-4.00"-B1.25"-WN08-08	WNHU080608PNR-GM YBM253	\$347.70
KIT1-FMP12-07-02	FMP12-4.00"-B1.25"-WN08-08-GMYBD152	FMP12-4.00"-B1.25"-WN08-08	WNHU080608PNR-GM YBD152	\$347.70
KIT1-FMP12-07-03	FMP12-4.00"-B1.25"-WN08-08-GMYBG205	FMP12-4.00"-B1.25"-WN08-08	WNHU080608PNR-GM YBG205	\$347.70

- Each kit price above includes 1 cutter and 10 inserts, wrench, grease and brochure.

- For more details, please refer to our catalog.

Recommended cutting parameters

	Workpiece material	Hardness HB	Insert grade	Cutting parameters		
				V(SFPM)	f(in/z)	a _{pmax} (in)
P	Low-carbon steel, Soft steel	≤180	YBM253/YBG205/ YB9320	900(700-1150)	0.008 (0.004-0.016)	0.224(WN06) 0.303(WN08)
	High-carbon steel, Alloy steel	180-280	YBM253/YBG205/ /YB9320	850 (650-1100)	0.008 (0.004-0.016)	
	Alloy tool steel	280-350	YBM253/YBG205/ /YB9320	750 (600-1000)	0.008 (0.004-0.016)	
K	Cast iron	180-250	YBD152	900 (500-1000)	0.008 (0.004-0.016)	

FMR05



Button Milling Series

- R-type inserts have stronger cutting edges .
- For face milling and cavity profile milling .

Kit Code	Kit Description	Cutter	Insert	Price (USD)
KIT2-FMR05-01-01	FMR05-0.750"-XP0.75"-RP2-02RPMW06T2YBG205	FMR05-0.750"-XP0.75"-RP2-02	RPMW06T200 YBG205	\$101.01
KIT2-FMR05-02-01	FMR05-1.00"-XP0.75"-RP3-02RPMW09T3YBG205	FMR05-1.00"-XP0.75"-RP3-02	RPMW09T300 YBG205	\$103.43
KIT2-FMR05-03-01	FMR05-1.25"-XP1.00"-RP3-03RPMW09T3YBG205	FMR05-1.25"-XP1.00"-RP3-03	RPMW09T300 YBG205	\$137.69
KIT2-FMR05-04-01	FMR05-1.500"-XP1.25"-RP4-03RPMW1204YBG205	FMR05-1.500"-XP1.25"-RP4-03	RPMW120400 YBG205	\$153.62
KIT1-FMR05-05-01	FMR05-2.00"-A0.75"-RP4-05RPMW1204YBG205	FMR05-2.00"-A0.75"-RP4-05	RPMW120400 YBG205	\$208.45
KIT1-FMR05-06-01	FMR05-2.50"-A0.75"-RP4-06RPMW1204YBG205	FMR05-2.50"-A0.75"-RP4-06	RPMW120400 YBG205	\$270.14
KIT1-FMR05-07-01	FMR05-3.00"-A1.00"-RP4-07RPMW1204YBG205	FMR05-3.00"-A1.00"-RP4-07	RPMW120400 YBG205	\$300.98
KIT1-FMR05-08-01	FMR05-4.00"-B1.50"-RP5-06RPMW1605YBG205	FMR05-4.00"-B1.50"-RP5-06	RPMW160500 YBG205	\$291.12

- Each kit price above includes 1 cutter and 10 inserts, wrench, grease and brochure.

- For more details, please refer to our catalog.

Recommended cutting parameters

Workpiece material	Hardness HB	Insert grade	Cutting parameters	
			V(SFPM)	f(in/z)
P	Low-carbon steel, Soft steel	YBG202	900(650-1200)	0.008(0.004-0.018)
		YBG205		
		YBG302	700(600-1000)	0.010(0.006-0.018)
	High-carbon steel, Alloy steel	YBG202	800(600-1200)	0.008(0.004-0.018)
		YBG205		
Alloy tool steel	280-350	YBG302	650(500-1000)	0.010(0.006-0.018)
M	Stainless steel	YBG202	500(300-700)	0.010(0.004-0.018)
		YBG205		
		YBG302		
K	Cast iron	YBG202	500(350-900)	0.008(0.004-0.018)
		YBG205		
		YBG302	700(400-1000)	0.008(0.004-0.018)

EMP01 P M N



Square Shoulder Milling Series

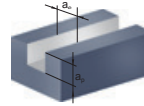
- Multi-function for square shoulder milling, slot milling, ramp milling etc.
- Inserts with newest 3D helical cutting edge for reducing cutting force.

Kit Code	Kit Description	Cutter	Insert	Price (USD)
KIT2-EMP01-01-01	EMP01-0.50"-G0.625"-AP11-01-APMYB9320	EMP01-0.50"-G0.625"-AP11-01	APKT11T308-APM YB9320	\$81.18
KIT2-EMP01-01-02	EMP01-0.50"-G0.625"-AP11-01-ALHYD101	EMP01-0.50"-G0.625"-AP11-01	APKT11T308-ALH YD101	\$81.18
KIT2-EMP01-02-01	EMP01-0.625"-G0.625"-AP11-02-APMYB9320	EMP01-0.625"-G0.625"-AP11-02	APKT11T308-APM YB9320	\$94.19
KIT2-EMP01-02-02	EMP01-0.625"-G0.625"-AP11-03-ALHYD101	EMP01-0.625"-G0.625"-AP11-02	APKT11T308-ALH YD101	\$94.19
KIT2-EMP01-03-01	EMP01-0.75"-G0.75"-AP11-02 (L=6.5)"-APMYB9320	EMP01-0.75"-G0.75"-AP11-02 (L=6.5")	APKT11T308-APM YB9320	\$105.85
KIT2-EMP01-03-02	EMP01-0.75"-G0.75"-AP11-02 (L=6.5)"-ALHYD101	EMP01-0.75"-G0.75"-AP11-02 (L=6.5")	APKT11T308-ALH YD101	\$105.85
KIT2-EMP01-04-01	EMP01-1.00"-G1.00"-AP11-03-APMYB9320	EMP01-1.00"-G1.00"-AP11-03	APKT11T308-APM YB9320	\$106.53
KIT2-EMP01-04-02	EMP01-1.00"-G1.00"-AP11-04-ALHYD101	EMP01-1.00"-G1.00"-AP11-03	APKT11T308-ALH YD101	\$106.53
KIT2-EMP01-05-01	EMP01-1.25"-G1.25"-AP11-04-APMYB9320	EMP01-1.25"-G1.25"-AP11-04	APKT11T308-APM YB9320	\$130.52
KIT2-EMP01-05-02	EMP01-1.25"-G1.25"-AP11-05-ALHYD101	EMP01-1.25"-G1.25"-AP11-04	APKT11T308-ALH YD101	\$130.52
KIT2-EMP01-06-01	EMP01-1.00"-G1.00"-AP16-02(L=7.0)"-APMYB9320	EMP01-1.00"-G1.00"-AP16-02(L=7.0)	APKT160408-APM YB9320	\$115.75
KIT2-EMP01-06-02	EMP01-1.00"-G1.00"-AP16-02(L=7.0)"-ALHYD101	EMP01-1.00"-G1.00"-AP16-02(L=7.0)	APKT160408-ALH YD101	\$115.75
KIT2-EMP01-07-01	EMP01-1.25"-G1.25"-AP16-03(L=7.0)"-APMYB9320	EMP01-1.25"-G1.25"-AP16-03(L=7.0)	APKT160408-APM YB9320	\$134.94
KIT2-EMP01-07-02	EMP01-1.25"-G1.25"-AP16-03(L=7.0)"-ALHYD101	EMP01-1.25"-G1.25"-AP16-03(L=7.0)	APKT160408-ALH YD101	\$134.94
KIT2-EMP01-08-01	EMP01-1.50"-G1.50"-AP16-04(L=7.0)"-APMYB9320	EMP01-1.50"-G1.50"-AP16-04(L=7.0)	APKT160408-APM YB9320	\$147.27
KIT2-EMP01-08-02	EMP01-1.50"-G1.50"-AP16-04(L=7.0)"-ALHYD101	EMP01-1.50"-G1.50"-AP16-04(L=7.0)	APKT160408-ALH YD101	\$147.27
KIT2-EMP01-09-01	EMP01-1.00"-XP1.00"-AP11-03-APMYB9320	EMP01-1.00"-XP1.00"-AP11-03	APKT11T308-APM YB9320	\$110.64
KIT2-EMP01-09-02	EMP01-1.00"-XP1.00"-AP11-03-ALHYD101	EMP01-1.00"-XP1.00"-AP11-03	APKT11T308-ALH YD101	\$110.64
KIT2-EMP01-10-01	EMP01-1.00"-XP1.00"-AP16-02-APMYB9320	EMP01-1.00"-XP1.00"-AP16-02	APKT160408-APM YB9320	\$110.95
KIT2-EMP01-10-02	EMP01-1.00"-XP1.00"-AP16-02-ALHYD101	EMP01-1.00"-XP1.00"-AP16-02	APKT160408-ALH YD101	\$110.95
KIT2-EMP01-11-01	EMP01-1.25"-XP1.25"-AP16-03-APMYB9320	EMP01-1.25"-XP1.25"-AP16-03	APKT160408-APM YB9320	\$131.51
KIT2-EMP01-11-02	EMP01-1.25"-XP1.25"-AP16-03-ALHYD101	EMP01-1.25"-XP1.25"-AP16-03	APKT160408-ALH YD101	\$131.51
KIT2-EMP01-12-01	EMP01-0.75"-XP0.75"-AP11-03-APMYB9320	EMP01-0.75"-XP0.75"-AP11-03	APKT11T308-APM YB9320	\$101.26
KIT2-EMP01-12-02	EMP01-0.75"-XP0.75"-AP11-03-ALHYD101	EMP01-0.75"-XP0.75"-AP11-03	APKT11T308-ALH YD101	\$107.91

- Each kit price above includes 1 cutter and 10 inserts, wrench, grease and brochure.
 - For more details, please refer to our catalog.

1 Square shoulder milling

Recommended cutting parameters(Same as page 8)

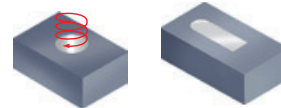


2 Slot milling

Recommended cutting parameters

(D: Diameter)

	Workpiece material	Hardness HB	Insert grade	Cutting parameters			
				V(SFPM)	f(in/z)		a _e (inch)
					-APF	-APM	
P	Low-carbon steel, Soft steel	≤ 180	YB9320	600(450-800)	0.004(0.003-0.006)	0.006(0.004-0.01)	D
	High-carbon steel, Alloy steel	180-280	YB9320	550(400-800)	0.004(0.003-0.006)	0.006(0.004-0.01)	D
	Alloy tool steel	280-350	YB9320	500(360-800)	0.004(0.003-0.006)	0.006(0.004-0.01)	D
M	Stainless steel	≤ 270	YB9320	400(260-600)	0.004(0.003-0.006)	0.006(0.004-0.01)	D
N					-ALH		
	Aluminium alloy	----	YD101	1000-	0.008(0.003-0.012)		D
			YD201	1000-	0.008(0.003-0.012)		D



3 Ramp milling, helical interpolation milling

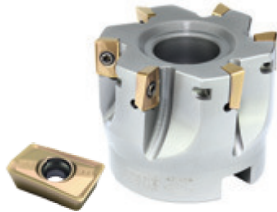
Recommended cutting parameters

(D: Diameter)

<p>● Ramp milling</p> $L_m = \frac{a_p}{\tan \alpha} \quad (\alpha: \text{Maximum ramp angle})$	Diameter ØD(mm)	APKT Ramp milling, helical interpolation milling (Inserts-11)				
		Ramp milling			Helical interpolation milling	
		Maximum cutting depth a _p (inch)	Maximum ramp angle α°	Minimum length L _m (inch)	Minimum diameter ØD ₁ (inch)	Maximum pitch(inch)
● Helical interpolation milling	0.62	0.394	10.0	2.232	0.787	0.079
	0.75	0.394	5.0	4.504	1.102	0.079
$\tan \alpha = \frac{P}{\pi D_1} \quad (\alpha: \text{Helical angle})$	1	0.394	4.5	5.000	1.575	0.079
	1.25	0.394	3.0	7.512	2.205	0.079
	1.5	0.394	2.0	11.276	2.756	0.079

Note: For cutting speed and feed rate per tooth, see square shoulder milling.

EMP02 P M N

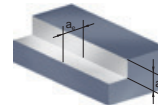


Square Shoulder Milling Series

- For square shoulder milling, face milling etc.
- Inserts with newest 3D helical cutting edge for reducing cutting force.

Kit Code	Kit Description	Cutter	Insert	Price (USD)
KIT1-EMP02-01-01	EMP02-2.00"-A0.75"-AP11-06-APMYB9320	EMP02-2.00"-A0.75"-AP11-06	APKT11T308-APM YB9320	\$164.10
KIT1-EMP02-01-02	EMP02-2.00"-A0.75"-AP11-06-ALHYD101	EMP02-2.00"-A0.75"-AP11-06	APKT11T308-ALH YD101	\$164.10
KIT1-EMP02-02-01	EMP02-2.50"-A0.75"-AP11-08-APMYB9320	EMP02-2.50"-A0.75"-AP11-08	APKT11T308-APM YB9320	\$189.47
KIT1-EMP02-02-02	EMP02-2.50"-A0.75"-AP11-08-ALHYD101	EMP02-2.50"-A0.75"-AP11-08	APKT11T308-ALH YD101	\$189.47
KIT1-EMP02-03-01	EMP02-3.00"-A1.00"-AP11-08-APMYB9320	EMP02-3.00"-A1.00"-AP11-08	APKT11T308-APM YB9320	\$199.74
KIT1-EMP02-03-02	EMP02-3.00"-A1.00"-AP11-08-ALHYD101	EMP02-3.00"-A1.00"-AP11-08	APKT11T308-ALH YD101	\$199.74
KIT1-EMP02-04-01	EMP02-4.00"-B1.25"-AP11-10-APMYB9320	EMP02-4.00"-B1.25"-AP11-10	APKT11T308-APM YB9320	\$233.33
KIT1-EMP02-04-02	EMP02-4.00"-B1.25"-AP11-10-ALHYD101	EMP02-4.00"-B1.25"-AP11-10	APKT11T308-ALH YD101	\$233.33
KIT1-EMP02-05-01	EMP02-2.00"-A0.75"-AP16-05-APMYB9320	EMP02-2.00"-A0.75"-AP16-05	APKT160408-APM YB9320	\$156.86
KIT1-EMP02-05-02	EMP02-2.00"-A0.75"-AP16-05-ALHYD101	EMP02-2.00"-A0.75"-AP16-05	APKT160408-ALH YD101	\$156.86
KIT1-EMP02-06-01	EMP02-2.50"-A0.75"-AP16-06-APMYB9320	EMP02-2.50"-A0.75"-AP16-06	APKT160408-APM YB9320	\$177.44
KIT1-EMP02-06-02	EMP02-2.50"-A0.75"-AP16-06-ALHYD101	EMP02-2.50"-A0.75"-AP16-06	APKT160408-ALH YD101	\$177.44
KIT1-EMP02-07-01	EMP02-3.00"-A1.00"-AP16-07-APMYB9320	EMP02-3.00"-A1.00"-AP16-07	APKT160408-APM YB9320	\$189.77
KIT1-EMP02-07-02	EMP02-3.00"-A1.00"-AP16-07-ALHYD101	EMP02-3.00"-A1.00"-AP16-07	APKT160408-ALH YD101	\$189.77
KIT1-EMP02-08-01	EMP02-4.00"-B1.25"-AP16-08-APMYB9320	EMP02-4.00"-B1.25"-AP16-08	APKT160408-APM YB9320	\$213.76
KIT1-EMP02-08-02	EMP02-4.00"-B1.25"-AP16-08-ALHYD101	EMP02-4.00"-B1.25"-AP16-08	APKT160408-ALH YD101	\$213.76

- Each kit price above includes 1 cutter and 10 inserts, wrench, grease and brochure.
- For more details, please refer to our catalog.



(D: Diameter)

Square shoulder milling

Recommended cutting parameters

Workpiece material	Hardness HB	Insert grade	Cutting parameters				
			V(SFPM)	f(in/z)		a _e (inch)	
				-APF	-APM		
P Low-carbon steel, Soft steel	≤ 180	YB9320	1000(650-1300)	0.004(0.003-0.008)	0.008(0.004-0.012)	≤ 0.5D	
	180-280	YB9320	900(600-1100)	0.004(0.003-0.008)	0.008(0.004-0.012)	≤ 0.5D	
	280-350	YB9320	850(500-1100)	0.004(0.003-0.008)	0.008(0.004-0.012)	≤ 0.5D	
M Stainless steel	≤ 270	YB9320	650(360-1000)	0.004(0.003-0.008)	0.008(0.004-0.012)	≤ 0.5D	
N Aluminium alloy	---	YD101	1000-	-ALH 0.008(0.003-0.016)		≤ 0.5D	
		YD201	1000-	0.008(0.003-0.016)		≤ 0.5D	

EMP13 P K N



Square Shoulder Milling Series

- Double negative rake angle tool body in combination with extra thick insert achieves double positive tool angle, which will help reduce cutting resistance and greatly improve impact resistance.
- Properly designed cutting edge with high precision control can achieve high quality 90 degree square shoulder milling.

Kit Code	Kit Description	Cutter	Insert	Price (USD)
KIT2-EMP13-01-01	EMP13-0.75"-XP0.75"-AN11-01C-GMYBM253	EMP13-0.75"-XP0.75"-AN11-01C	ANGX110508PNR-GM YBM253	\$125.74
KIT2-EMP13-01-02	EMP13-0.75"-XP0.75"-AN11-01C-GMYBD152	EMP13-0.75"-XP0.75"-AN11-01C	ANGX110508PNR-GM YBD152	\$125.74
KIT2-EMP13-01-03	EMP13-0.75"-XP0.75"-AN11-01C-GMYBG205	EMP13-0.75"-XP0.75"-AN11-01C	ANGX110508PNR-GM YBG205	\$125.74
KIT2-EMP13-01-04	EMP13-0.75"-XP0.75"-AN11-01C-LH YD101	EMP13-0.75"-XP0.75"-AN11-01C	ANGX110504PNR-LH YD101	\$125.74
KIT2-EMP13-02-01	EMP13-1.00"-G1.00"-AN11-02C-GMYBM253	EMP13-1.00"-G1.00"-AN11-02C	ANGX110508PNR-GM YBM253	\$125.74
KIT2-EMP13-02-02	EMP13-1.00"-G1.00"-AN11-02C-GM YBD152	EMP13-1.00"-G1.00"-AN11-02C	ANGX110508PNR-GM YBD152	\$125.74
KIT2-EMP13-02-03	EMP13-1.00"-G1.00"-AN11-02C-GMYBG205	EMP13-1.00"-G1.00"-AN11-02C	ANGX110508PNR-GM YBG205	\$125.74
KIT2-EMP13-02-04	EMP13-1.00"-G1.00"-AN11-02C-LH YD101	EMP13-1.00"-G1.00"-AN11-02C	ANGX110504PNR-LH YD101	\$125.74
KIT2-EMP13-03-01	EMP13-1.25"-XP1.25"-AN11-03C-GMYBM253	EMP13-1.25"-XP1.25"-AN11-03C	ANGX110508PNR-GM YBM253	\$153.16
KIT2-EMP13-03-02	EMP13-1.25"-XP1.25"-AN11-03C-GMYBD152	EMP13-1.25"-XP1.25"-AN11-03C	ANGX110508PNR-GM YBD152	\$153.16
KIT2-EMP13-03-03	EMP13-1.25"-XP1.25"-AN11-03C-GMYBG205	EMP13-1.25"-XP1.25"-AN11-03C	ANGX110508PNR-GM YBG205	\$153.16
KIT2-EMP13-03-04	EMP13-1.25"-XP1.25"-AN11-03C-LHYD101	EMP13-1.25"-XP1.25"-AN11-03C	ANGX110504PNR-LH YD101	\$153.16
KIT2-EMP13-04-01	EMP13-1.50"-G1.25"-AN11-04C-GMYBM253	EMP13-1.50"-G1.25"-AN11-04C	ANGX110508PNR-GM YBM253	\$201.13
KIT2-EMP13-04-02	EMP13-1.50"-G1.25"-AN11-04C-GMYBD152	EMP13-1.50"-G1.25"-AN11-04C	ANGX110508PNR-GM YBD152	\$201.13
KIT2-EMP13-04-03	EMP13-1.50"-G1.25"-AN11-04C-GMYBG205	EMP13-1.50"-G1.25"-AN11-04C	ANGX110508PNR-GM YBG205	\$201.13
KIT2-EMP13-04-04	EMP13-1.50"-G1.25"-AN11-04C-LHYD101	EMP13-1.50"-G1.25"-AN11-04C	ANGX110504PNR-LH YD101	\$201.13
KIT1-EMP13-05-01	EMP13-2.00"-A0.75"-AN11-06C-GMYBM253	EMP13-2.00"-A0.75"-AN11-06C	ANGX110508PNR-GM YBM253	\$251.16
KIT1-EMP13-05-02	EMP13-2.00"-A0.75"-AN11-06C-GMYBD152	EMP13-2.00"-A0.75"-AN11-06C	ANGX110508PNR-GM YBD152	\$251.16
KIT1-EMP13-05-03	EMP13-2.00"-A0.75"-AN11-06C-GMYBG205	EMP13-2.00"-A0.75"-AN11-06C	ANGX110508PNR-GM YBG205	\$251.16
KIT1-EMP13-05-04	EMP13-2.00"-A0.75"-AN11-06C-LHYD101	EMP13-2.00"-A0.75"-AN11-06C	ANGX110504PNR-LH YD101	\$251.16
KIT1-EMP13-06-01	EMP13-2.50"-A0.75"-AN11-07C-GMYBM253	EMP13-2.50"-A0.75"-AN11-07C	ANGX110508PNR-GM YBM253	\$283.38
KIT1-EMP13-06-02	EMP13-2.50"-A0.75"-AN11-07C-GMYBD152	EMP13-2.50"-A0.75"-AN11-07C	ANGX110508PNR-GM YBD152	\$283.38
KIT1-EMP13-06-03	EMP13-2.50"-A0.75"-AN11-07C-GMYBG205	EMP13-2.50"-A0.75"-AN11-07C	ANGX110508PNR-GM YBG205	\$283.38
KIT1-EMP13-06-04	EMP13-2.50"-A0.75"-AN11-07C-LH YD101	EMP13-2.50"-A0.75"-AN11-07C	ANGX110504PNR-LH YD101	\$283.38
KIT1-EMP13-07-01	EMP13-1.25"-XP1.25"-AN15-02C-GMYBM253	EMP13-1.25"-XP1.25"-AN15-02C	ANGX150608PNR-GM YBM253	\$134.81
KIT1-EMP13-07-02	EMP13-1.25"-XP1.25"-AN15-02C-GMYBD152	EMP13-1.25"-XP1.25"-AN15-02C	ANGX150608PNR-GM YBD152	\$134.81
KIT1-EMP13-07-03	EMP13-1.25"-XP1.25"-AN15-02C-GMYBG205	EMP13-1.25"-XP1.25"-AN15-02C	ANGX150608PNR-GM YBG205	\$134.81
KIT1-EMP13-07-04	EMP13-1.25"-XP1.25"-AN15-02C-LHYD101	EMP13-1.25"-XP1.25"-AN15-02C	ANGX150608PNR-LH YD101	\$134.81
KIT1-EMP13-08-01	EMP13-1.50"-XP1.25"-AN15-03C-GMYBM253	EMP13-1.50"-XP1.25"-AN15-03C	ANGX150608PNR-GM YBM253	\$162.22

Kit Code	Kit Description	Cutter	Insert	Price (USD)
KIT1-EMP13-08-02	EMP13-1.50"-XP1.25"-AN15-03C-GMYBD152	EMP13-1.50"-XP1.25"-AN15-03C	ANGX150608PNR-GM YBD152	\$162.22
KIT1-EMP13-08-03	EMP13-1.50"-XP1.25"-AN15-03C-GMYBG205	EMP13-1.50"-XP1.25"-AN15-03C	ANGX150608PNR-GM YBG205	\$162.22
KIT1-EMP13-08-04	EMP13-1.50"-XP1.25"-AN15-03C-LHYD101	EMP13-1.50"-XP1.25"-AN15-03C	ANGX150608PNR-LH YD101	\$162.22
KIT1-EMP13-09-01	EMP13-2.00"-A0.75"-AN15-04C-GMYBM253	EMP13-2.00"-A0.75"-AN15-04C	ANGX150608PNR-GM YBM253	\$210.21
KIT1-EMP13-09-02	EMP13-2.00"-A0.75"-AN15-04C-GMYBD152	EMP13-2.00"-A0.75"-AN15-04C	ANGX150608PNR-GM YBD152	\$210.21
KIT1-EMP13-09-03	EMP13-2.00"-A0.75"-AN15-04C-GMYBG205	EMP13-2.00"-A0.75"-AN15-04C	ANGX150608PNR-GM YBG205	\$210.21
KIT1-EMP13-09-04	EMP13-2.00"-A0.75"-AN15-04C-LHYD101	EMP13-2.00"-A0.75"-AN15-04C	ANGX150608PNR-LH YD101	\$210.21
KIT1-EMP13-10-01	EMP13-2.50"-A0.75"-AN15-05C-GMYBM253	EMP13-2.50"-A0.75"-AN15-05C	ANGX150608PNR-GM YBM253	\$232.15
KIT1-EMP13-10-02	EMP13-2.50"-A0.75"-AN15-05C-GMYBD152	EMP13-2.50"-A0.75"-AN15-05C	ANGX150608PNR-GM YBD152	\$232.15
KIT1-EMP13-10-03	EMP13-2.50"-A0.75"-AN15-05C-GMYBG205	EMP13-2.50"-A0.75"-AN15-05C	ANGX150608PNR-GM YBG205	\$232.15
KIT1-EMP13-10-04	EMP13-2.50"-A0.75"-AN15-05C-LHYD101	EMP13-2.50"-A0.75"-AN15-05C	ANGX150608PNR-LH YD101	\$232.15
KIT1-EMP13-11-01	EMP13-3.00"-A1.00"-AN15-06C-GMYBM253	EMP13-3.00"-A1.00"-AN15-06C	ANGX150608PNR-GM YBM253	\$260.23
KIT1-EMP13-11-02	EMP13-3.00"-A1.00"-AN15-06C-GMYBD152	EMP13-3.00"-A1.00"-AN15-06C	ANGX150608PNR-GM YBD152	\$260.23
KIT1-EMP13-11-03	EMP13-3.00"-A1.00"-AN15-06C-GMYBG205	EMP13-3.00"-A1.00"-AN15-06C	ANGX150608PNR-GM YBG205	\$260.23
KIT1-EMP13-11-04	EMP13-3.00"-A1.00"-AN15-06C-LHYD101	EMP13-3.00"-A1.00"-AN15-06C	ANGX150608PNR-LH YD101	\$260.23
KIT1-EMP13-12-01	EMP13-4.00"-B1.50"-AN15-08C-GMYBM253	EMP13-4.00"-B1.50"-AN15-08	ANGX150608PNR-GM YBM253	\$316.44
KIT1-EMP13-12-02	EMP13-4.00"-B1.50"-AN15-08C-GMYBD152	EMP13-4.00"-B1.50"-AN15-08	ANGX150608PNR-GM YBD152	\$316.44
KIT1-EMP13-12-03	EMP13-4.00"-B1.50"-AN15-08C-GMYBG205	EMP13-4.00"-B1.50"-AN15-08	ANGX150608PNR-GM YBG205	\$316.44
KIT1-EMP13-12-04	EMP13-4.00"-B1.50"-AN15-08C-LHYD101	EMP13-4.00"-B1.50"-AN15-08	ANGX150608PNR-LH YD101	\$316.44

- Each kit price above includes 1 cutter and 10 inserts, wrench, grease and brochure.

- For more details, please refer to our catalog.

Recommended cutting parameters

Workpiece material	Hardness HB	Grade	Cutting data		
			V(SFPM)	f(in/z)	a _{pmax} (in)
P Low carbon steel	≤ 180	YBM253/YBG205/ YB9320	900(700-1100)	0.01(0.004-0.016)	0.441(AN11) 0.571(AN15)
	180-350	YBM253/YBG205/ YB9320	800(600-1000)	0.01(0.004-0.016)	
K Cast iron	180-260	YBD152/YBD252	880(500-1000) 700(400-1000)	0.01(0.004-0.016) 0.08(0.004-0.012)	
N Aluminium alloy	--	YD101	-LH		
			1000-	0.008(0.003-0.016)	

XMR01 P M K



High Feed Milling Series

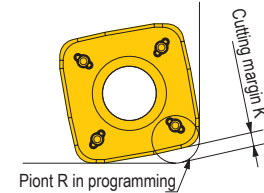
- Two mounting types: Straight shank and shell mill.
- Radial cutting force is reduced effectively to realize cutting with high feed rates.

Kit Code	Kit Description	Cutter	Insert	Price (USD)
KIT2-XMR01-01-01	XMR01-0.75"-G0.75"-SD06-02C-PMYBG205	XMR01-0.75"-G0.75"-SD06-02C	SDMT06T208-PM YBG205	\$102.82
KIT2-XMR01-01-02	XMR01-0.75"-G0.75"-SD06-02C-DMYBG202	XMR01-0.75"-G0.75"-SD06-02C	SDMT06T208-DM YBG202	\$102.82
KIT2-XMR01-02-01	XMR01-1.00"-G1.00"-SD06-03C-PMYBG205	XMR01-1.00"-G1.00"-SD06-03C	SDMT06T208-PM YBG205	\$136.86
KIT2-XMR01-02-02	XMR01-1.00"-G1.00"-SD06-03C-DMYBG202	XMR01-1.00"-G1.00"-SD06-03C	SDMT06T208-DM YBG202	\$136.86
KIT2-XMR01-03-01	XMR01-1.00"-G1.00"-SD09-02C(L=7.00")-DMYBG202	XMR01-1.00"-G1.00"-SD09-02C(L=7.00")	SDMT09T312-DM YBG202	\$121.33
KIT2-XMR01-03-02	XMR01-1.00"-G1.00"-SD09-02C(L=7.00")-PMYBM253	XMR01-1.00"-G1.00"-SD09-02C(L=7.00")	SDMT3(2.5)3-PM YBM253	\$121.33
KIT2-XMR01-04-01	XMR01-1.25"-G1.25"-SD09-03C-DMYBG202	XMR01-1.25"-G1.25"-SD09-03C	SDMT09T312-DM YBG202	\$119.27
KIT2-XMR01-04-02	XMR01-1.25"-G1.25"-SD09-03C-PMYBM253	XMR01-1.25"-G1.25"-SD09-03C	SDMT3(2.5)3-PM YBM253	\$119.27
KIT2-XMR01-05-01	XMR01-1.25"-G1.25"-SD12-02C-DMYBG302	XMR01-1.25"-G1.25"-SD12-02C	SDMT433-DM YBG302	\$109.74
KIT2-XMR01-05-02	XMR01-1.25"-G1.25"-SD12-02C-DMYBG202	XMR01-1.25"-G1.25"-SD12-02C	SDMT433-DM YBG202	\$109.74
KIT2-XMR01-05-03	XMR01-1.25"-G1.25"-SD12-02C-NMYBG212	XMR01-1.25"-G1.25"-SD12-02C	SDMT433-NM YBG212	\$109.74
KIT2-XMR01-06-01	XMR01-1.50"-G1.50"-SD12-03C-DMYBG302	XMR01-1.50"-G1.50"-SD12-03C	SDMT433-DM YBG302	\$130.30
KIT2-XMR01-06-02	XMR01-1.50"-G1.50"-SD12-03C-DMYBG202	XMR01-1.50"-G1.50"-SD12-03C	SDMT433-DM YBG202	\$130.30
KIT2-XMR01-06-03	XMR01-1.50"-G1.50"-SD12-03C-NMYBG212	XMR01-1.50"-G1.50"-SD12-03C	SDMT433-NM YBG212	\$130.30
KIT1-XMR01-07-01	XMR01-2.00"-A0.75"-SD09-04-DMYBG302	XMR01-2.00"-A0.75"-SD09-04	SDMT3(2.5)3-DM YBG302	\$135.04
KIT1-XMR01-07-02	XMR01-2.00"-A0.75"-SD09-04-DMYBG202	XMR01-2.00"-A0.75"-SD09-04	SDMT3(2.5)3-DM YBG202	\$135.04
KIT1-XMR01-07-03	XMR01-2.00"-A0.75"-SD09-04-NMYBG212	XMR01-2.00"-A0.75"-SD09-04	SDMT3(2.5)3-NM YBG212	\$135.04
KIT1-XMR01-08-01	XMR01-2.00"-A0.75"-SD12-05 (L=2.00")-DMYBG302	XMR01-2.00"-A0.75"-SD12-05 (L=2.00")	SDMT433-DM YBG302	\$183.76
KIT1-XMR01-08-02	XMR01-2.00"-A0.75"-SD12-05 (L=2.00")-DMYBG202	XMR01-2.00"-A0.75"-SD12-05 (L=2.00")	SDMT433-DM YBG202	\$183.76
KIT1-XMR01-08-03	XMR01-2.00"-A0.75"-SD12-05 (L=2.00")-NMYBG212	XMR01-2.00"-A0.75"-SD12-05 (L=2.00")	SDMT433-NM YBG212	\$183.76
KIT1-XMR01-09-01	XMR01-2.50"-A1.00"-SD12-05C-DMYBG302	XMR01-2.50"-A1.00"-SD12-05C	SDMT433-DM YBG302	\$161.15
KIT1-XMR01-09-02	XMR01-2.50"-A1.00"-SD12-05C-DMYBG202	XMR01-2.50"-A1.00"-SD12-05C	SDMT433-DM YBG202	\$161.15
KIT1-XMR01-09-03	XMR01-2.50"-A1.00"-SD12-05C-NMYBG212	XMR01-2.50"-A1.00"-SD12-05C	SDMT433-NM YBG212	\$161.15
KIT1-XMR01-10-01	XMR01-3.00"-A1.00"-SD12-07-DMYBG302	XMR01-3.00"-A1.00"-SD12-07	SDMT433-DM YBG302	\$238.60
KIT1-XMR01-10-02	XMR01-3.00"-A1.00"-SD12-07-DMYBG202	XMR01-3.00"-A1.00"-SD12-07	SDMT433-DM YBG202	\$238.60
KIT1-XMR01-10-03	XMR01-3.00"-A1.00"-SD12-07-NMYBG212	XMR01-3.00"-A1.00"-SD12-07	SDMT433-NM YBG212	\$238.60
KIT1-XMR01-11-01	XMR01-4.00"-A1.25"-SD12-09-DMYBG302	XMR01-4.00"-A1.25"-SD12-09	SDMT433-DM YBG302	\$293.43
KIT1-XMR01-11-02	XMR01-4.00"-A1.25"-SD12-09-DMYBG202	XMR01-4.00"-A1.25"-SD12-09	SDMT433-DM YBG202	\$293.43
KIT1-XMR01-11-03	XMR01-4.00"-A1.25"-SD12-09-NMYBG212	XMR01-4.00"-A1.25"-SD12-09	SDMT433-NM YBG212	\$293.43

- Each kit price above includes 1 cutter and 10 inserts, wrench, grease and brochure.
- For more details, please refer to our catalog.

Approximate R in machining program

Applicable insert	Approximate R(mm)	Cutting margin K(mm)
SDMT06T208-DM/-PM/-NM	1.6	0.5
SDMT09T312-DM/-PM/-NM	2.5	0.87
SDMT120412-DM/-PM/-NM	4.0	0.93
SDMT150520-DM/-PM/-NM	4.0	1.38



Recommended cutting parameters

Workpiece material	Hardness HB	Insert grade	Cutting speed (SFPM)	Ø0.75/Ø1.00		Ø1.50/ Ø1.25		Ø2.00/2.50		Ø3.00/4.00/5.00/6.00		
				Axial cutting depth	Feed rate per tooth	Axial cutting depth	Feed rate per tooth	Axial cutting depth	Feed rate per tooth	Axial cutting depth	Feed rate per tooth	
P	Soft steel Carbon steel	≤HB180	YBG202	550 (400-700)	0.024~0.04	0.032~0.048	0.032~0.048	0.04~0.056	0.043~0.06	0.043~0.06	0.04~0.06	0.04~0.06
		HB180-280	YBM253 YBM351 YBC302	500 (300-650)								
	Alloy steel Alloy tool steel	HB280-350	YBG202	450 (300-650)	0.016~0.032	0.032~0.048	0.024~0.04	0.04~0.056	0.035~0.051	0.43~0.06	0.032~0.051	0.04~0.06
		≤HB350	YBM253 YBM351 YBC302	400 (260-600)								
Pre-hardened steel	≤HRC35	YBG202	450 (300-600)	0.016~0.032	0.024~0.04	0.024~0.04	0.032~0.048	0.035~0.051	0.035~0.051	0.032~0.051	0.032~0.051	
		YBM253 YBM351 YBC302	400 (260-500)									
M	Stainless steel	≤HB270	YBM253 YBM351	400 (260-500)	0.024~0.04	0.024~0.04	0.032~0.048	0.032~0.048	0.043~0.06	0.035~0.051	0.04~0.06	0.032~0.051
		YBG202 YBG205	400 (260-600)									
K	Common cast iron	Tensile strength ≤350MPa	YBG202	500 (350-700)	0.024~0.04	0.04~0.056	0.032~0.048	0.048~0.064	0.043~0.06	0.051~0.067	0.04~0.06	0.048~0.067
			YBG302	500 (300-650)								
K	Nodular cast iron	Tensile strength ≤800MPa	YBG202	400 (300-600)	0.016~0.032	0.032~0.048	0.024~0.04	0.04~0.056	0.035~0.051	0.043~0.06	0.032~0.051	0.04~0.06
			YBG302	400 (260-500)								
S	High-temperature alloy	≤400	YBG212	150(60-200)	0.016~0.031	0.004-0.010	0.02-0.035	0.005-0.016	0.03-0.047	0.006-0.016	0.03-0.05	0.005-0.02

ZTD03



3xD Short Hole Drills.

- High Torque capability bodies. Large flute gullets for free chip evacuation.
- Insert position reduces vibrations for improved hole tolerance and finish.

Kit Code	Kit Description	Cutter	Insert	Price (USD)
KIT2-ZTD03-01-01	ZTD03-0.500"-XP0.75"-SP05-02-PM	ZTD03-0.500"-XP0.75"-SP05-02	SPGT050204-PM YBG205	\$219.82
			SPGT050204-PM YBG212	
KIT2-ZTD03-01-02	ZTD03-0.500"-XP0.75"-SP05-02-EM	ZTD03-0.500"-XP0.75"-SP05-02	SPGT050204-EM YBG205	\$219.82
			SPGT050204-EM YBG212	
KIT2-ZTD03-02-01	ZTD03-0.626"-XP0.75"-SP05-02-PM	ZTD03-0.626"-XP0.75"-SP05-02	SPGT050204-PM YBG205	\$219.82
			SPGT050204-PM YBG212	
KIT2-ZTD03-02-02	ZTD03-0.626"-XP0.75"-SP05-02-EM	ZTD03-0.626"-XP0.75"-SP05-02	SPGT050204-EM YBG205	\$219.82
			SPGT050204-EM YBG212	
KIT2-ZTD03-03-01	ZTD03-0.75"-XP1.00"-SP06-02-PM	ZTD03-0.75"-XP1.00"-SP06-02	SPGT060204-PM YBG205	\$227.41
			SPGT060204-PM YBG212	
KIT2-ZTD03-03-02	ZTD03-0.75"-XP1.00"-SP06-02-EM	ZTD03-0.75"-XP1.00"-SP06-02	SPGT060204-EM YBG205	\$227.41
			SPGT060204-EM YBG212	
KIT2-ZTD03-04-01	ZTD03-0.875"-XP1.00"-SP07-02-PM	ZTD03-0.875"-XP1.00"-SP07-02	SPGT07T308-PM YBG205	\$238.11
			SPGT07T308-PM YBG212	
KIT2-ZTD03-04-02	ZTD03-0.875"-XP1.00"-SP07-02-EM	ZTD03-0.875"-XP1.00"-SP07-02	SPGT07T308-EM YBG205	\$238.11
			SPGT07T308-EM YBG212	
KIT2-ZTD03-05-01	ZTD03-1.00"-XP1.00"-SP07-02-PM	ZTD03-1.00"-XP1.00"-SP07-02	SPGT07T308-PM YBG205	\$238.11
			SPGT07T308-PM YBG212	
KIT2-ZTD03-05-02	ZTD03-1.00"-XP1.00"-SP07-02-EM	ZTD03-1.00"-XP1.00"-SP07-02	SPGT07T308-EM YBG205	\$238.11
			SPGT07T308-EM YBG212	
KIT2-ZTD03-06-01	ZTD03-1.25"-XP1.25"-SP09-02-PM	ZTD03-1.25"-XP1.25"-SP09-02	SPGT090408-PM YBG205	\$282.31
			SPGT090408-PM YBG212	
KIT2-ZTD03-06-02	ZTD03-1.25"-XP1.25"-SP09-02-EM	ZTD03-1.25"-XP1.25"-SP09-02	SPGT090408-EM YBG205	\$282.31
			SPGT090408-EM YBG212	
KIT2-ZTD03-07-01	ZTD03-1.375"-XP1.50"-SP11-02-PM	ZTD03-1.375"-XP1.50"-SP11-02	SPGT110408-PM YBG205	\$298.70
			SPGT110408-PM YBG212	
KIT2-ZTD03-07-02	ZTD03-1.375"-XP1.50"-SP11-02-EM	ZTD03-1.375"-XP1.50"-SP11-02	SPGT110408-EM YBG205	\$298.70
			SPGT110408-EM YBG212	
KIT2-ZTD03-08-01	ZTD03-1.500"-XP1.50"-SP11-02-PM	ZTD03-1.500"-XP1.50"-SP11-02	SPGT110408-PM YBG205	\$309.26
			SPGT110408-PM YBG212	
KIT2-ZTD03-08-02	ZTD03-1.500"-XP1.50"-SP11-02-EM	ZTD03-1.500"-XP1.50"-SP11-02	SPGT110408-EM YBG205	\$309.26
			SPGT110408-EM YBG212	
KIT2-ZTD03-09-01	ZTD03-1.625"-XP1.50"-SP11-02-PM	ZTD03-1.625"-XP1.50"-SP11-02	SPGT110408-PM YBG205	\$342.85
			SPGT110408-PM YBG212	
KIT2-ZTD03-09-02	ZTD03-1.625"-XP1.50"-SP11-02-EM	ZTD03-1.625"-XP1.50"-SP11-02	SPGT110408-EM YBG205	\$342.85
			SPGT110408-EM YBG212	

-Each kit price above includes 1 drill body and 20 inserts, wrench, grease and brochure.

-YBG205 grade is suggested for peripheral insert, while YBG212 is for inner insert.

-PM chip breaker is recommended for machining ISO P&K, EM chip breaker is for ISO M&N.

-For more details, please refer to our catalog.

● Recommended cutting parameters for ZTD drills

ISO	Materials	Hardness HB	Diameter Dc(inch)	Feed rate fn(in/r)	Cutting speed Vc (SFPM)
P	Carbon steel	80-200	0.500-0.906 0.938-1.187 1.219-1.500 1.531-1.813 1.875-2.000	0.002-0.004 0.002-0.004 0.002-0.004 0.003-0.004 0.003-0.005	650(550-800)
	Low alloy steel	150-260	0.500-0.906 0.938-1.187 1.219-1.500 1.531-1.813 1.875-2.000	0.002-0.004 0.002-0.005 0.002-0.006 0.003-0.006 0.004-0.008	550(450-700)
	High alloy steel	150-320	0.500-0.906 0.938-1.187 1.219-1.500 1.531-1.813 1.875-2.000	0.002-0.004 0.002-0.005 0.002-0.006 0.003-0.007 0.004-0.009	500(400-600)
	Cast steel	180-250	0.500-0.906 0.938-1.187 1.219-1.500 1.531-1.813 1.875-2.000	0.002-0.003 0.002-0.003 0.002-0.004 0.003-0.004 0.003-0.005	450(400-550)
M	Stainless steel Ferrite Martensite	150-270	0.500-0.906 0.938-1.187 1.219-1.500 1.531-1.813 1.875-2.000	0.002-0.004 0.002-0.005 0.002-0.006 0.003-0.007 0.004-0.009	500(360-750)
	Austenite	150-275	0.500-0.906 0.938-1.187 1.219-1.500 1.531-1.813 1.875-2.000	0.002-0.004 0.002-0.004 0.002-0.005 0.003-0.006 0.004-0.006	450(360-700)
K	Malleable cast iron	150-230	0.500-0.906 0.938-1.187 1.219-1.500 1.531-1.813 1.875-2.000	0.002-0.004 0.002-0.006 0.003-0.006 0.004-0.008 0.005-0.009	500(400-700)
	Gray cast iron	150-220	0.500-0.906 0.938-1.187 1.219-1.500 1.531-1.813 1.875-2.000	0.002-0.004 0.002-0.006 0.003-0.006 0.004-0.008 0.005-0.009	650(550-800)
	Nodular cast iron	160-250	0.500-0.906 0.938-1.187 1.219-1.500 1.531-1.813 1.875-2.000	0.002-0.004 0.002-0.005 0.002-0.006 0.003-0.006 0.004-0.008	500(400-650)
N	Non ferrous metral	60-110	0.500-0.906 0.938-1.187 1.219-1.500 1.531-1.813 1.875-2.000	0.002-0.004 0.002-0.006 0.003-0.006 0.004-0.008 0.005-0.009	1000(800-1150)