



### Who is Genesis Lamp?

For more than 25 years, Genesis Lamp has been a family-owned and operated business, one of America's premier replacement lamp manufacturers. What keeps us in the forefront of the industry is the fact that we design, manufacture and test everything we build. Genesis is the largest North American distributor of airport lighting for Phillips, Osram, and GE lighting. Genesis is an authorized replacement light bulb distributor for GE, Ushio, Osram/Sylvania, Philips and Seimens; providing a world of replacement lamps and bulbs, from xenon flash and halogen to par reflector and HID par bulbs.

Genesis Lamp is constantly improving our products through research and development, specifically for xenon flash and halogen bulbs. To support the manufacturing and R&D portion of Genesis Lamp, in-house photo metrics for light output, power, and life test measurements are available.

### Why use Genesis Lamp?

Because we're going to have exactly what you need, in the quantity you need. We offer lighting and light bulb cross-reference for GE, Osram Sylvania, Honeywell and Philips lighting and light bulbs. Genesis Lamp also stocks airport lighting fixtures, aviation windsocks, obstruction lighting, tall tower lighting, LED and emergency lighting, photographic, dental and graphic arts lighting.

Genesis Lamp is one of the few remaining light bulb manufacturers that manufactures the majority of its products in the U.S. And we make delivery fast and easy. No matter what you need, Genesis offers you the best choice for replacement bulbs online.

Visit us at [genesislamp.com](http://genesislamp.com) for more information.

Genesis Lamp is an Authorized Distributor of Quality Lighting Products for:



Your Single-Source Supplier for  
 General and Specialty Light Bulbs



**Industrial • Commercial • Residential**  
 800-685-5267

Genesis Lamp is your one source for all replacement light bulbs, both general and specialty. The following pages will give you an overview of our lighting product lines.

Call us at 800-685-5267 for more information, or visit us at [genesislamp.com](http://genesislamp.com) to order online and view our current specials.



## Compact Fluorescent Light Bulbs

### Categories

- Single Tube
- Double Tube
- Triple Tube
- Quad Tube
- Torpedo
- Spirals
- Globe
- Decorative
- A-Line
- Reflector



## Fluorescent Tubes

### Categories

- T2 Fluorescent
- T4 Fluorescent
- T5 Fluorescent
- T6 Fluorescent
- Circular Fluorescent
- T8 Fluorescent
- T9 Fluorescent
- T10 Fluorescent
- T12 Fluorescent
- T17 Fluorescent
- U-Bent
- Square



## LED Light Bulbs

### Categories

- MR LED Light Bulbs
- Par LED Light Bulbs
- Decorative LED Light Bulbs
- LR & BR LED Light Bulbs



## Scientific & Medical Light Bulbs

### Categories

- Microscope Bulbs
- Optical Equipment Bulbs
- Surgery Room Bulbs
- X-Ray Equipment Bulbs
- Dental Equipment Bulbs
- Fiber-Optical
- Precision Equipment
- Ophthalmic Bulbs
- Optical Alignment



## Navigational Light

### Categories

- Airfield/Runway Light Bulbs
- Aircraft Light Bulbs
- Marine Navigation
- Beacon & Tower Lighting
- Obstruction Lighting
- Train & Railroad Lights



## Miniature Incandescent Light Bulbs

### Categories

- Bayonet Base
- Chicago
- End Caps
- Festoon Base
- Marine
- Midget Flange
- Midget Groove
- Pin Base
- Rigid Loop
- Screw Base
- Single Contact Bayonet Base
- Slide Base
- Wedge Base
- Wire Terminal



## Miniature European Light Bulbs

### Categories

- 6.8mm (BA7S Base)
- 8.5mm (BA9S Base)
- 10mm (BA9S Base)
- 16mm (BA15D Base)
- 16mm (E14 Base)
- 26mm (Pygmy)
- 35mm (BA20D)
- 45mm (E-14, Globe)
- 5mm (Wedge Base)
- Festoon, Lilliput



## Miniature Xenon Light Bulbs

### Categories

- Festoon Xenon
- Rigid Loop Xenon
- T-31/4 Wedge Base
- T-5 Wedge Base
- 2-Pin Xenon
- Single Ended Xenon
- KX-2000 Series
- 10,000 Hours
- 6V, 12V, 24V
- 120V, 130V



## I.R. (Infrared) Heat Bulbs

### Categories

- R-40 Clear, I.R.
- R-40 Red, I.R.
- PAR-38, I.R.
- Linear I.R. Tube
- Shatter Protected
- Applications
- Curing & Drying
- Food Service
- Hatcheries
- Heat Therapy
- Livestock Health



### PAR Bulbs

#### Categories

- PAR-14 bulbs
- PAR-16 bulbs
- PAR-20 bulbs
- PAR-30 bulbs
- PAR-36 bulbs
- PAR-38 bulbs
- PAR-46 bulbs
- PAR-56 bulbs
- PAR-64 bulbs



### H.I.D. (High Intensity Discharge) Light Bulbs

#### Categories

- Metal Halide
- High Pressure Sodium
- Low Pressure Sodium
- Pulse Start
- Protected Metal Halide
- CDM PAR Bulbs
- Single Ended
- Double Ended
- Mercury Vapor
- Instant Restrike



### Sealed Beam Light Bulbs

#### Categories

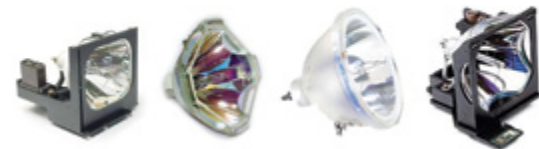
- Standard Sealed Beams
- Quartz Sealed Beams
- Halogen Sealed Beams
- Rectangular Sealed Beams
- PAR-36
- PAR-46
- PAR-56
- PAR-64



### L.C.D./D.L.P Projection Lamps

#### Categories

- A&K
- ASK
- Boxlight
- Canon
- Christie
- Dukane
- Eiki
- Epson
- GE
- IBM
- Infocus
- Megapower
- Mitsubishi
- NEC
- Philips
- Proxima
- Runco
- Sanyo
- Sharp
- Sony



### Lamp Sockets & Holders

#### Categories

- BA15S, BA15D
- ES, E10, E12, E14, E17
- E27, E40 Screw Sockets
- Miniature Bayonet
- Miniature Screw
- Wedge Base
- Ceramic Sockets
- Halogen Sockets
- Panel & PCB Mount



### A-Type Light Bulbs

#### Categories

- A-15 Bulbs
- A-19 Bulbs
- A-21 Bulbs
- A-23 Bulbs
- 3-Way Bulbs
- Low Voltage
- High Voltage
- Colored Bulbs
- Long Life 10k & 20K



### PS-Type Light Bulbs

#### Categories

- PS-25 Light Bulbs
- PS-30 Light Bulbs
- PS-35 Light Bulbs
- PS-40 Light Bulbs
- PS-52 Light Bulbs



### Reflector Bulbs

#### Categories

- ER-30
- R-12
- R-14
- R-16
- R-20
- BR-25
- BR-30
- BR-38
- BR-40
- R-40
- R-52



### Tubular Light Bulbs

#### Categories

- T-4 1/2
- T-6
- T-6 1/2
- T-7
- T-8
- T-10



### Decorative Globe Light Bulbs

#### Categories

- G-6 Light Bulbs
- G-8 Light Bulbs
- G-12 Light Bulbs
- G-16 1/2 Light Bulbs
- G-25 Light Bulbs
- G-40 Light Bulbs



## Chandelier Light Bulbs

### Categories

- Flame Tip
- Torpedo Tip
- Petite Size
- European E-14 Base
- Miniature E-10 Base
- Krypton
- Clear/Frosted
- LED Bulbs



## Colored Light Bulbs

### Categories

- S-11
- S-11 Colors, Ceramics & Transparent
- S-14
- S-14 10,000 Hours
- S-14 Colors, Ceramics & Transparent
- PAR Light Bulbs



## Photo-Projection/SSTV Bulbs

### Categories

- A.N.S.I. Coded Bulbs
- Projection Bulbs
- Stage & Studio
- Photography Bulbs



## Traffic Signal Light Bulbs

### Categories

- A-19 TS Bulbs
- A-21 TS Bulbs
- PS-25 TS Bulbs
- PAR-56 TS Bulbs
- Long Life
- Krypton Gas Filled
- Rough Service
- LED Street Light Fixtures



## CCFL Cold Cathode Fluorescent Bulbs

### Categories

- Globe Light Bulbs
- A15Light Bulbs
- A19, Light Bulbs
- Chandelier Light Bulbs
- R-20, R-30, S-14
- 25,000 Hours Life
- Dimmable
- Sign Lamps



## U.V. Black Light Bulbs

### Categories

- T-5 Tubes
- T-8 Tubes
- T-10 Tubes
- T-12 Tubes
- R-30
- Black Light UV
- Black Light Blue UV
- A-19
- HID
- Compact Fluorescent



## Germicidal UV Light Bulbs

### Categories

- GTL3 Germicidal
- T5 Germicidal
- T8 Germicidal
- T10 Germicidal
- Compact "PL" Bulbs
- Compact UV
- Single Pin
- 4 Pin Single End
- 4 Pin Slim-line
- 2-Pin Double End



## Ballasts

### Categories

- CFL Ballasts
- Electronic Ballasts
- Magnetic Ballasts
- HID Ballasts
- Dimming Ballasts
- Pulse-Start Ballasts
- Fluorescent Ballasts
- Ballast Kits



## Halogen Light Bulbs

### Categories

- MR-8 Halogen
- MR-11 Halogen
- MR-16 Halogen
- MR-20 Halogen
- 2 Pin Halogen Bulbs
- Single Ended
- Double Ended
- Reflectors
- Automotive
- HPL Spot Lights



## L.E.D. Exit Signs & Emergency Lights

### Categories

- LED Exit Signs
- 25 Year Life
- Universal Input Voltage
- Emergency Lighting
- Easy Installation
- Indoor & Outdoor Applications

