

# CAN YOU HEAR IT?

For Soprano and Mezzo Soprano Duet

Serena Joaquim  
arr. by A. Alvarez  
and David Ezell

Intro

Moving ahead ♩ = 69

Chords: Ab Eb Bbm Ab Eb/Ab Bbm/Ab

mf

The piano introduction consists of four measures. The right hand features a rhythmic pattern of eighth and sixteenth notes, while the left hand plays a steady eighth-note accompaniment. The key signature is three flats (B-flat major/C minor).

Verses 1 & 2

mf

5 Ab 1st Solo Eb/Ab Db/Ab Eb11

When you're head - ing down life's high - way  
A - ny time\_ you make a wrong\_ turn

The first system of the verses includes a vocal line with lyrics and a piano accompaniment. The piano part features a consistent eighth-note accompaniment in the left hand and chords in the right hand. The key signature remains three flats.

7 Ab(add2) Eb/Ab Db/Ab Eb11

And you don't know where to go,  
You feel lost\_ and so\_ a - lone.

The second system of the verses includes a vocal line with lyrics and a piano accompaniment. The piano part continues with the same accompaniment style as the first system. The key signature remains three flats.

Can You Hear It?

Chorus 1



Can you hear



13  $A\flat(\text{add}2)$  Cm  $B\flat m7$   $E\flat 11$

— it deep with-in you? God is call - ing. — Can you hear

15  $A\flat(\text{add}2)$  Cm  $B\flat m7$   $E\flat 11$

— it in the si - lence God will know. —

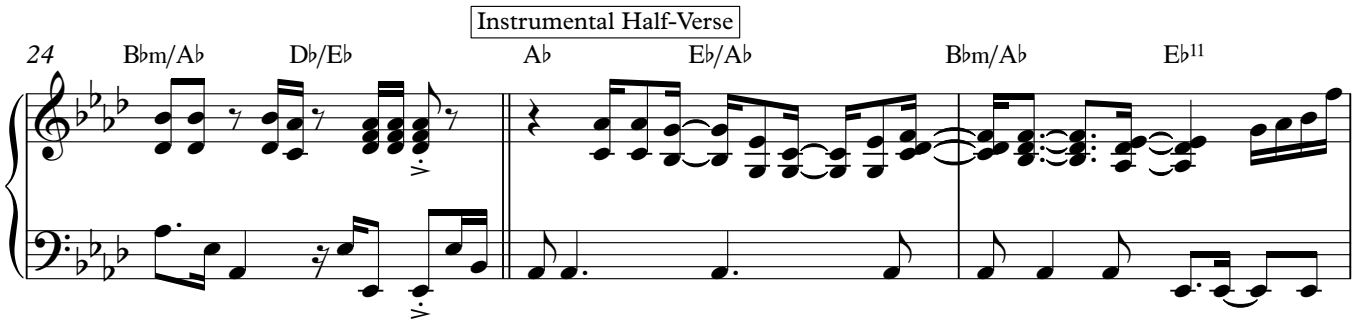
**Instrumental Interlude**

21 Ab Eb/Ab Bbm/Ab Ab Eb/Ab

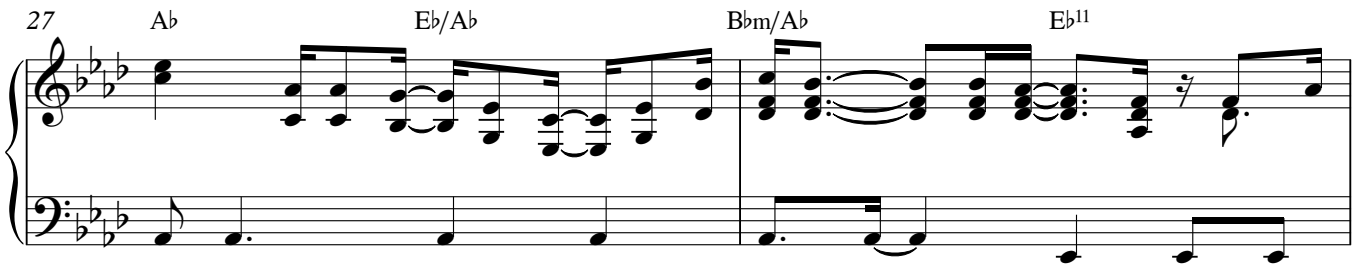


**Instrumental Half-Verse**

24 Bbm/Ab Db/Eb Ab Eb/Ab Bbm/Ab Eb11



27 Ab Eb/Ab Bbm/Ab Eb11



**Vocal Half-Verse**

29 Ab(add2) Eb/Ab Db/Ab Eb11

If you lis - ten you\_ will hear\_ it.\_\_\_\_\_



## Can You Hear It?

31  $A\flat(\text{add}2)$   $E\flat/A\flat$   $D\flat/A\flat$   $E\flat^{11}$  Chorus 2

You are nev - er on your own.

*f* 2nd Solo or Group

Can you hear

33  $A\flat(\text{add}2)$   $Cm$   $B\flat m^7$  *f*  $D\flat/E\flat$

God is call - ing you.

1st Solo (*ad. lib.* or sing as written to end)

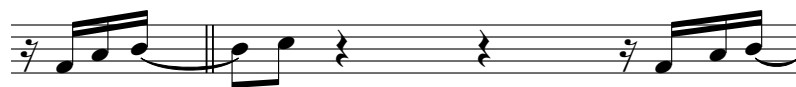
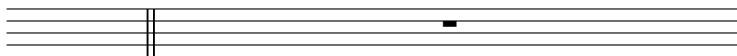
— it deep with-in you? God is call - ing. Can you hear

35  $A\flat(\text{add}2)$   $Cm$   $B\flat m^7$   $E\flat^{11}$

God al - ways knows.

— it in the si - lence? God will know.

Vamp & Improv  $A\flat(\text{add}2)$  Cm



Can you hear \_\_\_\_\_ it? Can you hear



# Can You Hear It?

42 **Bbm7** **E♭13(sus4)** **A♭(add2)** **Cm**

Can you hear? God is al-ways guid-ing you.

— it? Can you hear — it? Can you hear

44 **Bbm7** **E♭13(sus4)**

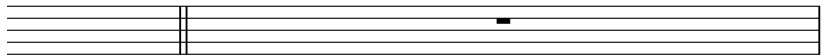
God will al-ways see you through.

— it? Can you hear —

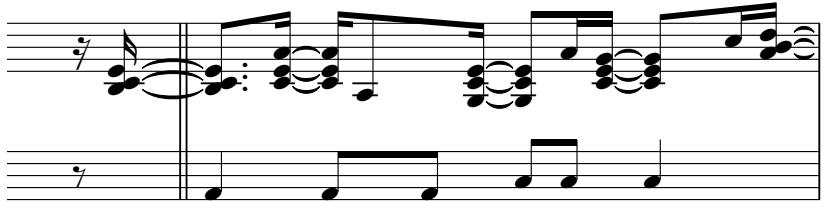
Chorus 3

A $\flat$ (add2)

Cm



Can you hear \_\_\_ it deep with-in \_\_\_ you? God is call-



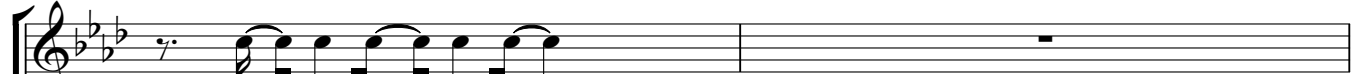
50

B $\flat$ m7

E $\flat$ 13(sus4)

A $\flat$ (add2)

Cm



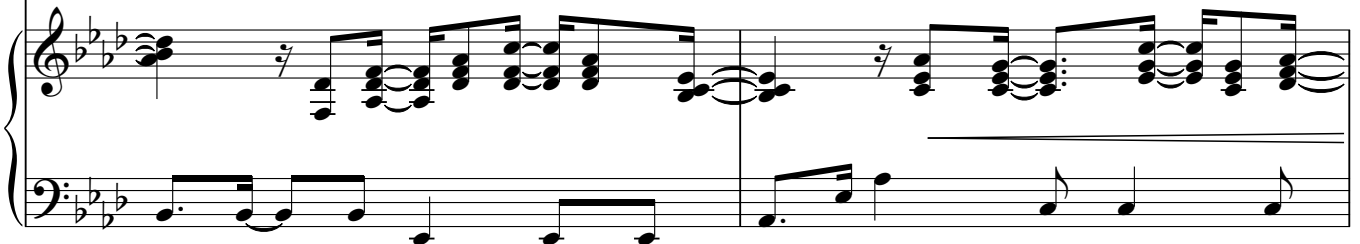
God is call - ing you.



- ing. \_\_\_

Can you hear \_\_\_ it

in the si - lence? God\_ will know.



Can You Hear It?

8

52  $B\flat m^7$   $E\flat^{13}(sus4)$

God al - ways knows.

56  $D\flat maj^7$   $D\flat/E\flat$  Coda  $A\flat(add2)$

Oh\_ Yeah! Can you hear\_ it?

Can you hear\_ it?



# CAN YOU HEAR IT?

Vocals

For Soprano and Mezzo Soprano Duet

Serena Joaquim  
arr. by A. Alvarez  
and David Ezell

Moving ahead ♩ = 69

Intro

Ab Eb/Ab Bbm/Ab Ab Eb/Ab Bbm/Ab

Verses 1 & 2

5 *mf* Ab 1st Solo Eb/Ab Db/Ab Eb<sup>11</sup> Ab(add2) Eb/Ab

When you're head-ing down life's high - way -  
A - ny time you make a wrong - turn -

And you don't know where to go, -  
You feel lost - and so - a-lone.

8 Db/Ab Eb<sup>11</sup>

Chorus 1

Can you hear

13 Ab(add2) Cm Bbm<sup>7</sup> Eb<sup>11</sup> Ab(add2) Cm

— it deep with-in you? God is call - ing... Can you hear — it in the si-lence God will know.

16 Bbm<sup>7</sup> Eb<sup>11</sup>

Instrumental Interlude

Ab Eb/Ab Bbm/Ab

Can You Hear It?  
Vocals

2

Instrumental Half-Verse

23 Ab Eb/Ab Bbm/Ab Ab Eb/Ab Db/Ab Eb11

Vocal Half-Verse

27 Ab Eb/Ab Db/Ab Eb11 Ab(add2) Eb/Ab Db/Ab Eb11

If you lis - ten you will hear it. —

31 Ab(add2) Eb/Ab Db/Ab Eb11 Chorus 2

You are nev - er on your own. — *f* 2nd Solo or Group

Can you hear

1st Solo (ad. lib. or sing as written to end)

33 Ab(add2) Cm Bbm7 f Db/Eb

God is call - ing you.

— it deep with-in you? God is call - ing. — Can you hear

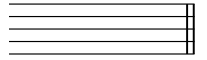
35 Ab(add2) Cm Bbm7 Eb11

God al - ways knows.

— it in the si - lence? God will know. —

Can You Hear It?  
Vocals

Vamp & Improv



Can you hear

41  $A\flat(\text{add}2)$   $Cm$   $B\flat m7$   $E\flat 13(\text{sus}4)$   $A\flat(\text{add}2)$   $Cm$

Can you hear? God is al-ways guid-ing you.

— it? Can you hear— it? Can you hear— it? Can you hear

44  $B\flat m7$   $E\flat 13(\text{sus}4)$

God will al-ways see you through

— it?

Can You Hear It?  
Vocals

56  $D\flat\text{maj}7$   $D\flat/E\flat$  Coda  $A\flat(\text{add}2)$

Oh... Yeah! Can you hear... it?

Can you hear... it?

# CAN YOU HEAR IT?

For Soprano and Mezzo Soprano Duet

Soprano Saxophone (Optional)

Serena Joaquim  
arr. by A. Alvarez  
and David Ezell

**Intro** **Moving ahead** ♩ = 69

B $\flat$  F/B $\flat$  Cm/B $\flat$  B $\flat$  F/B $\flat$  Cm/B $\flat$

**Verses 1 & 2** **Chorus 1**

5 7 8

**Instrumental Interlude**

21 B $\flat$  F/B $\flat$  Cm/B $\flat$  B $\flat$  F/B $\flat$  Cm/B $\flat$

**Instrumental Half-Verse**

25 B $\flat$  F/B $\flat$  Eb/B $\flat$  F $^{11}$  B $\flat$  F/B $\flat$

**Vocal Half-Verse** **Chorus 2**

28 Eb/B $\flat$  F $^{11}$  3

**Vamp & Improv** **Chorus 3**

33 7 7

**Coda**

49 7

# CAN YOU HEAR IT?

By Serena Joaquim

## INTRO

### VERSE (1st Soloist)

When you're heading down life's highway  
And you don't know where to go,  
If you listen you will hear it,  
The still voice of God who knows.

### CHORUS 1 (1st Soloist)

Can you hear it deep within you?  
God is calling.  
Can you hear it in the silence?  
God will know.  
Can you hear it deep within you?  
In the silence  
Can you hear it?  
God is always guiding you.

### VERSE 2 (1st Soloist)

Any time you make a wrong turn  
You feel lost and so alone.  
If you listen you will hear it  
The still voice will guide you home.

### CHORUS 1

### INSTRUMENTAL INTERLUDE

### INSTRUMENTAL HALF-VERSE

### VOCAL HALF-VERSE (1st Soloist)

If you listen you will hear it.  
You are never on your own.

*(At this point a 2nd Soloist or small group enters. Then the 1st Soloist sings in an improvisatory style, either ad libbing or using the printed part. The main part is sung by the 2nd soloist. Optional 1st soloist lyrics are in parentheses.)*

### CHORUS 2

Can you hear it deep within you?  
God is calling.  
(God is calling you.)  
Can you hear it in the silence?  
God will know.  
(God always knows.)  
Can you hear it deep within you,  
In the silence?  
(The still voice of God.)  
Can you hear it?  
God is always guiding you.  
(God's guiding you.)

### VAMP & IMPROV

Can you hear it?  
Can you hear it?  
(Can you hear?)  
Can you hear it?  
(God is always guiding you.)  
Can you hear it?  
(God will always see you through.)  
Can you hear it?  
(God is always guiding you.)  
Can you hear it?  
(God will always see you through.)  
Can you hear it?  
(Can you hear?)  
Can you hear it?  
(That's my God.)

### CHORUS 3

Can you hear it deep within you?  
God is calling.  
(God is calling you.)  
Can you hear it in the silence?  
God will know.  
(God always knows.)  
Can you hear it deep within you?  
In the silence  
(The still voice of God.)  
Can you hear it?  
God is always guiding you.  
(Oh yeah!)

### CODA (All voices in unison)

Can you hear it?