

DTVGameControl

Display Power Control



How to use iConvert with HEX IR Commands for Direct input into DTVGameControl



Use iTest to test command before adding to DTVGameControl

Global Cache iConvert program

Paste Hex command here

```
0000 006D 0022 0002 0156 00AB 0014 0014 0014 0014 0014 0014 0014 0014
0014 0014 0014 0014 0014 0014 0014 0014 0014 0041 0014 0041 0014 0041
0014 0041 0014 0041 0014 0041 0014 0041 0014 0041 0014 0041 0014 0014
0014 0041 0014 0041 0014 0014 0014 0041 0014 0041 0014 0041 0014 0041
0014 05ED 0156 0056 0014 0E47
```

Select Hex to Global Cache

Global Caché Command Global Caché to Hex Hex to Global Caché

Output - Global Caché Command

```
sendir,<mod-addr>:<conn-addr>,1,38000,<repeatcount>,
1,342,171,20,20,20,20,20,20,20,20,20,20,20,20,20,20,20,20,20,20,20,20,20,20,20,20,65,20,65,20,65,20,65,20,65,20,65,
20,65,20,65,20,65,20,65,20,20,20,20,20,20,65,20,20,20,20,20,20,20,20,20,20,20,20,20,20,20,20,20,65,20,65,20,20,20,65,
20,65,20,65,20,65,20,1517,342,86,20,3655
```

Omit "sendir,<mod-addr>:<conn-addr>,1,"

<repeatcount>
Set repeat count to 1

Commands entered into the top window will be converted according to the chosen conversion mechanism.

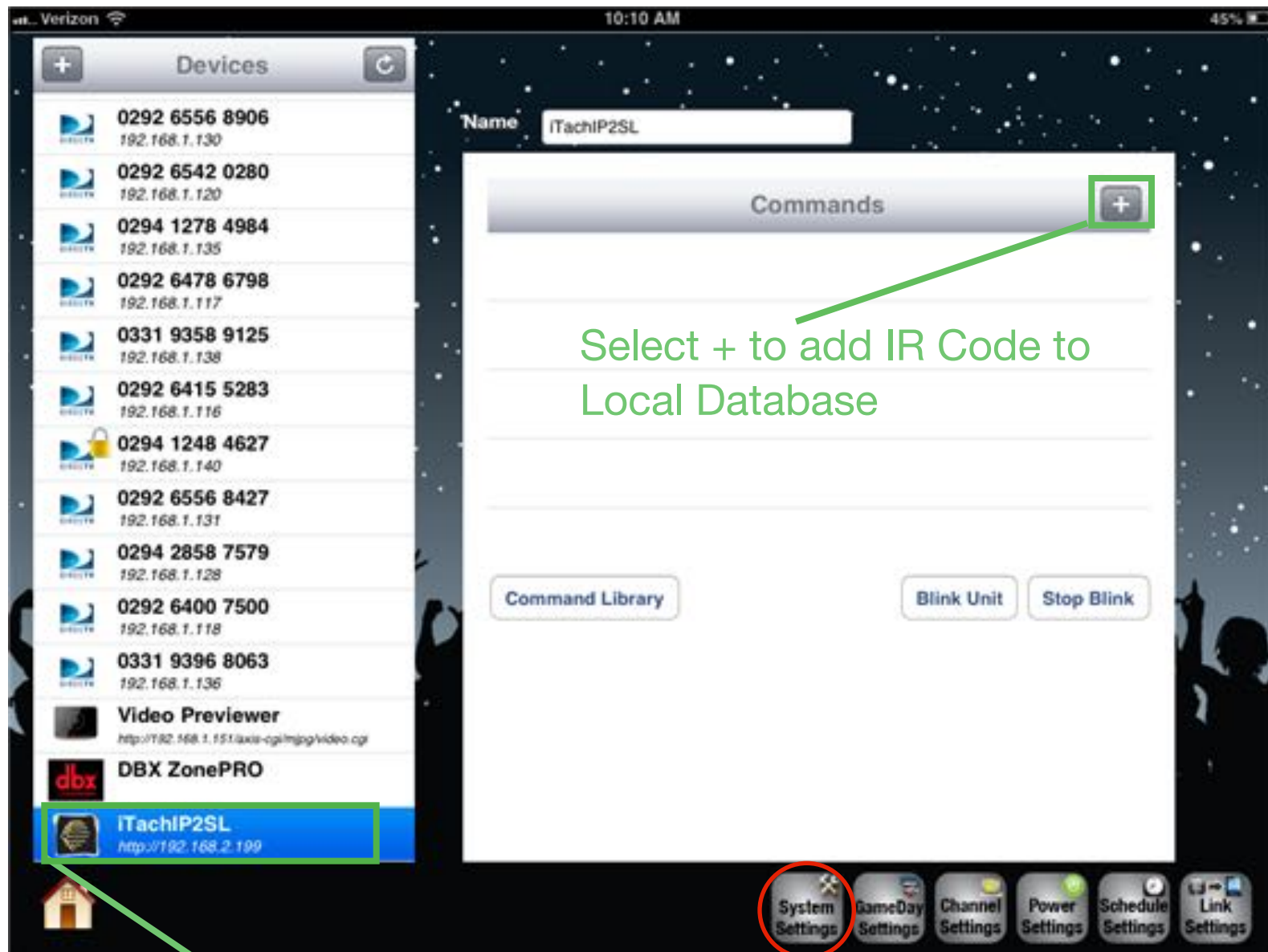
Copy and paste the code into DTVGameControl

Below is a Example of what should be pasted into DTVGameControl

```
38000,1,1,342,171,20,20,20,20,20,20,20,20,20,20,20,20,20,20,20,20,20,20,20,20,20,20,20,20,20,65,20,65,20,65,20,65,20,65,20,65,
20,65,20,65,20,20,20,20,20,20,65,20,20,20,20,20,20,20,20,20,20,20,20,20,20,20,20,20,65,20,65,20,20,20,65,20,65,20,65,20,65,20,151
7,342,86,20,3655
```

Enter iConvert IR Codes into DTVGameControl

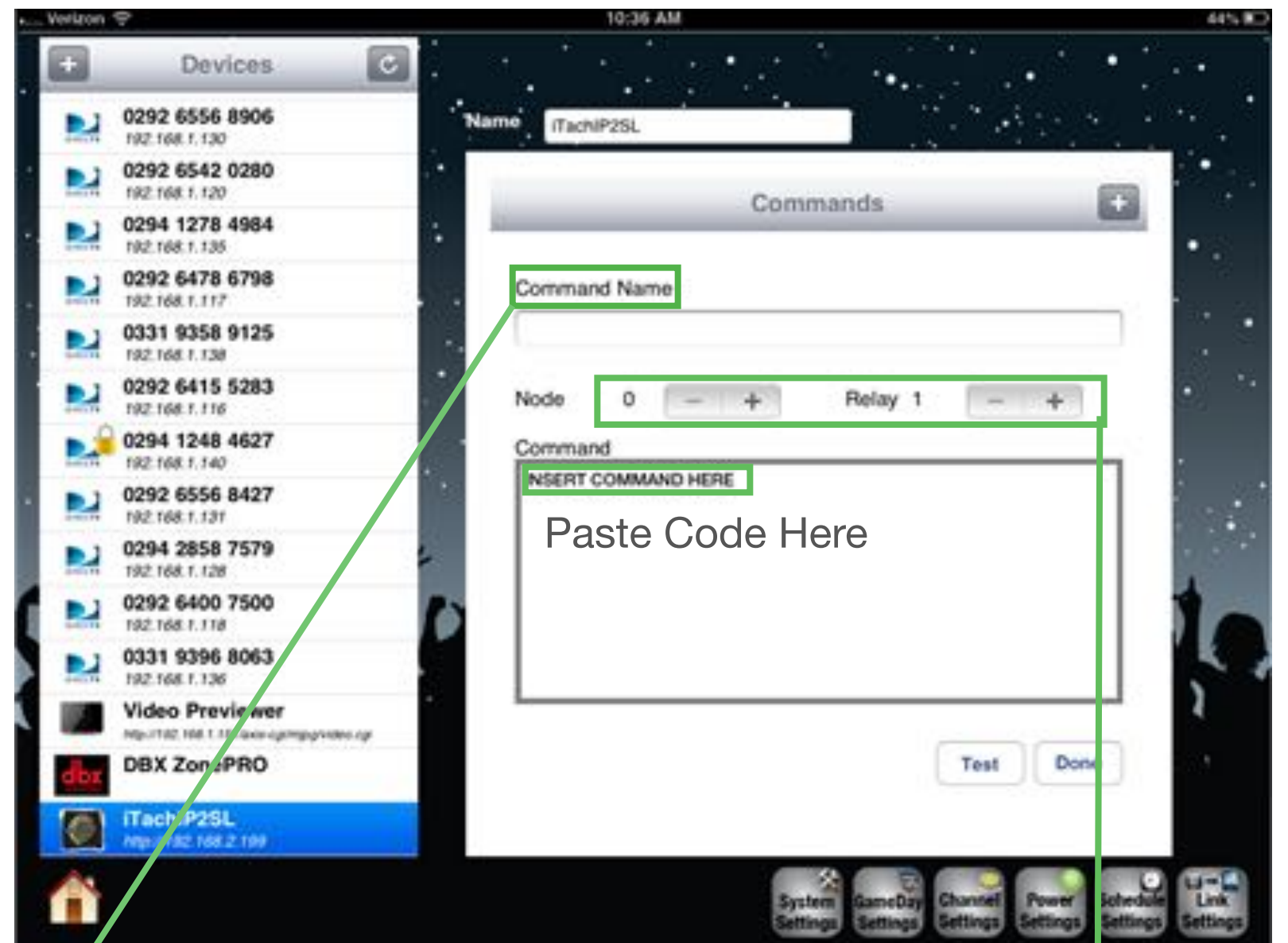
Add IR Command to Local Database and Enduser Power Page



Select + to add IR Code to Local Database



Select the Global Cache device to send IR code

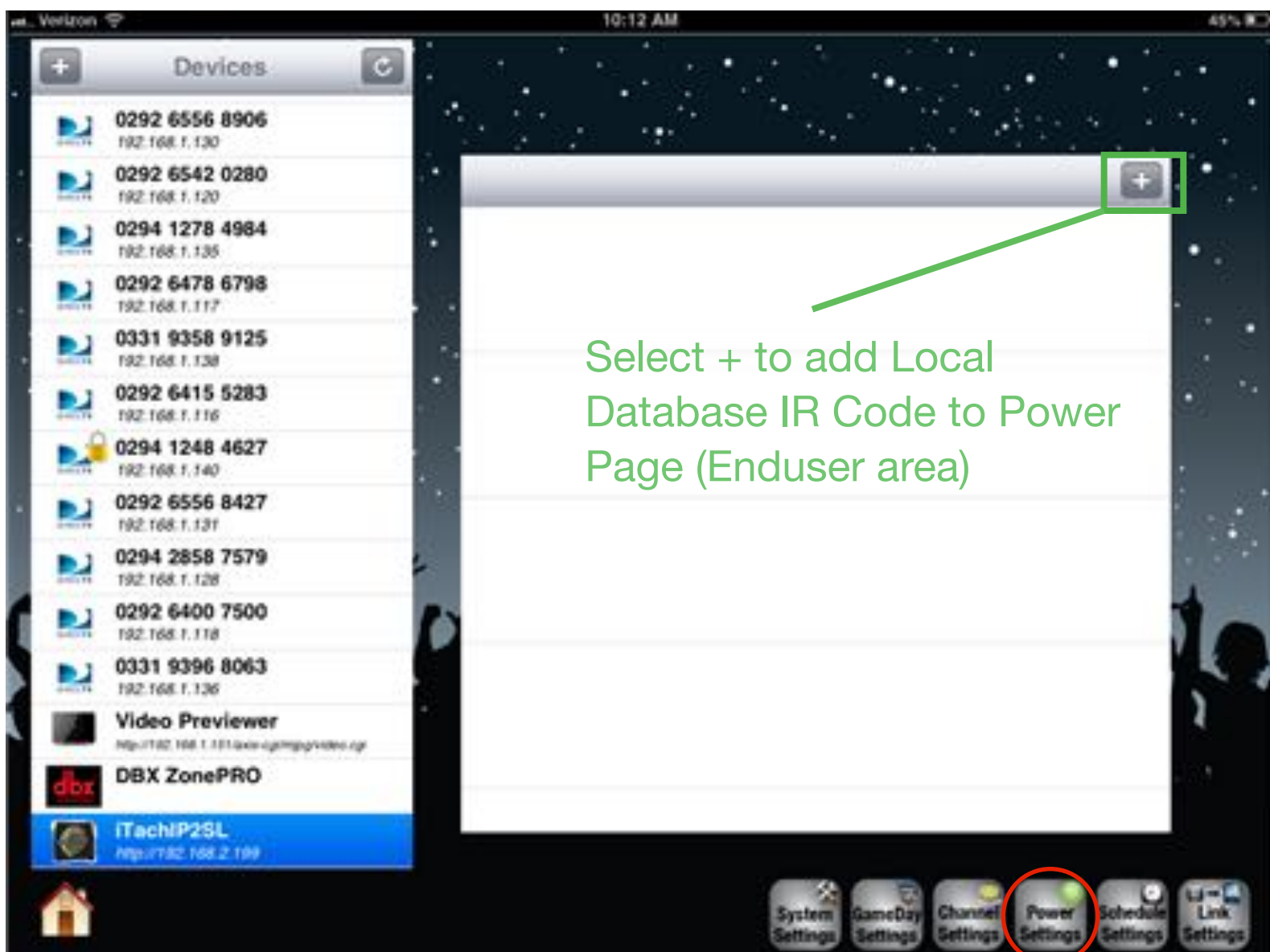


Command Name

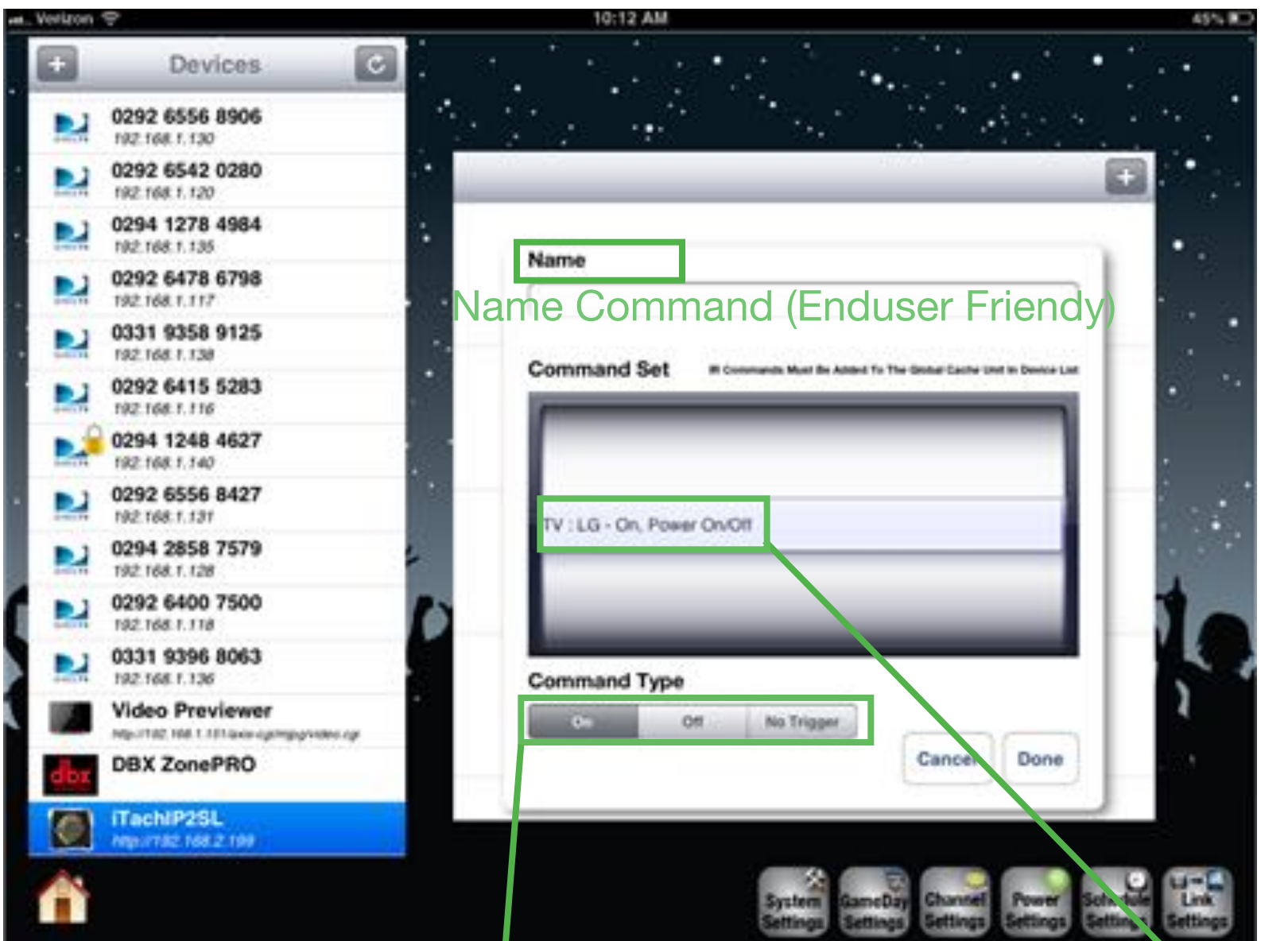
Name Command



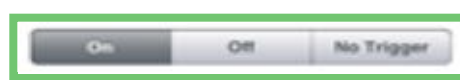
Node needs to be set if using a GC100, All other GC IR devices set to 1. Set Relay to the IR output # device is connected to.



Select + to add Local Database IR Code to Power Page (Enduser area)



Name Command (Enduser Friendly)



Select Command Type (No Trigger will exclude from All ON, All Off and Timer Events)



Select IR code from Local Database