

Basic operation and attention of wireless microphone

- Open the battery compartment correctly and install the battery. Attention shall be paid to the cathode and anode of the battery.
- Turn the power switch on microphone to "ON". If the power indicator lamp does not flash or always lights, inspect whether the battery voltage is insufficient or the polarity of battery is installed oppositely.
- Adjust the microphone volume knob on the audio amplifier and its position according to the sound volume when singing to reach the ideal effect.
- If you use wireless microphone temporarily during the singing process, you can put the microphone switch in mute status; once using is stopped, you can turn the microphone switch in off status. The microphone will pick up sound to amplify it and input to the horn of the audio amplifier no matter it is in mute or off status.
- The effective using distance of wireless microphone is within 30m, please do not use it beyond the effective range in order to avoid inferior effect; when the electricity quantity of battery is reduced or the wireless interference signal of the using environment is too strong, the using distance shall be shortened accordingly.
- To reach the best singing effect, the distance between mouth and microphone shall be 5-15CM and the best angle is 45degrees.
- After the microphone is used for a very long time and lacks of electricity, the indicator lamp for electricity insufficiency will light. Please timely change the battery in order not to affect the singing effect.
- Please do not use the two microphones of the same frequency point for singing within short distance since it may cause silence or interference noise.
- If you have purchased more than two sets of active audio amplifiers matched with wireless microphone from the company and intend to use them together, please select the varieties in different standard frequencies. If the frequency is identical, two sets machines can not be used until they are separated from each other for 100m to avoid mutual interference and other unnecessary troubles! Never get the machine to VCD/CD/DVD and other equipments with strong interference frequency when they are used to avoid mutual interference between the same frequencies, which will affect the wireless signal receiving of the microphone.

Common simple faults and guidance for operation and repair

Fault description	Possible causes	Troubleshooting
Speaker not power on	The power switch is turned on The speaker is out of battery	Turn on the power switch Use power adaptor to charge the battery
No sound	Audio input is not correctly selected. The audio cable is not connected properly to the line input. Main volume is switched to minimum. No sound when playing U-disk. No sound when playing by line input Poor contact or damage of external audio cable	Change the audio input by pressing the mode button. Reconnect the audio cable. Properly adjust the volume knob. Check the U-disk or the mode switch button. Change the audio source of line input. Readjust or change audio cable.
External microphone has no sound	External microphone is not fully inserted in the jack The external microphone switch is not turned on The volume knob of microphone is off	Totally insert the microphone to the jack Turn on the switch of wireless microphone Properly adjust the volume knob of microphone
Problems with wireless microphone	The switch of wireless microphone is not turned on The wireless microphone is not installed with batteries The sound of wireless microphone is in distortion	Turn on the switch of wireless microphone Install the batteries in the wireless microphone Change the battery of wireless microphone

If the above solution did not solve the issue, please contact the nearest local maintenance department. The product technology of our company is upgraded continuously, the product descriptions in this manual are subject to change without notice.

SINGTRONIC

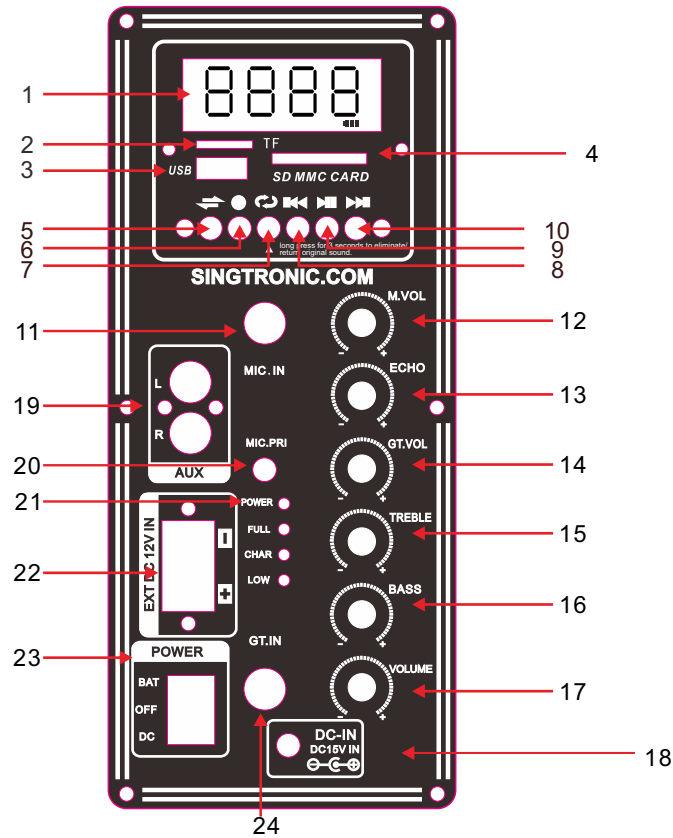
Professional Mobile Karaoke Speaker



Operating Instructions

Please carefully read the operating instruction before using our product

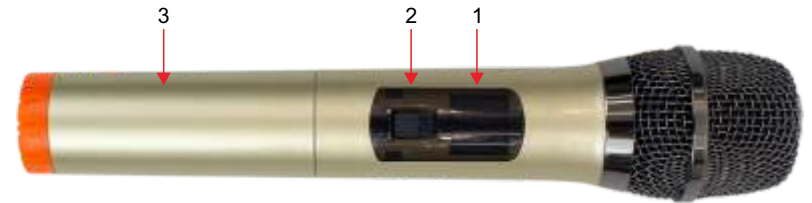
Panel/rear plate/MP3 function and operation



- 1.- Information screen
- 2.- Connection port of TF memory cards.
- 3.- Connection port of USB storage devices.
- 4.- Connection port of SD memory cards.
- 5.- : Allows you to select between different audio sources: USB storage device, SD memory card, Line input or Bluetooth receiver.
- 6.- : Long press to start recording; short press playback the recording files. Recording function only works when the U-disk is inserted.
- 7.- : Set the loop mode of the songs to repeat one or repeat all. Long press for 3 seconds to eliminate/return original sound.
- 8.- : Play the previous song.
- 9.- : Start and pause in playback.
- 10.- : Play the next song.
- 11.- **MIC IN**: Micro level input, 6.3 mm jack connector.
- 12.- **MIC VOL**: Volume control for the handheld microphone.
- 13.- **ECHO**: Decrease or enhance the echo effect.
- 14.- **GT. VOL**: Volume control for the guitar input.
- 15.- **TREBLE**: Adjust the treble of the music.
- 16.- **BASS**: Adjust the bass of the music.
- 17.- **VOLUME**: General volume control.
- 18.- **DC IN 15 V**: Power input for the supplied power adapter.
- 19.- **AUX INPUT**: Line level auxiliary input, 2 x RCA connector.
- 20.- **MIC PRI**: Enable or disable the microphone priority function. When it is in the ON position, the rest of the entries will be attenuated automatically when a signal is detected in the wireless microphone or the mic input.
- 21.- **POWER**: Turn on the power, the power indicator light will be on, regardless of that the speaker uses an internal or external power supply.
 - **FULL**: This indicator will glow when the battery is fully charged.
 - **CHAR**: The indicator will glow when the speaker is charging.
 - **LOW**: This indicator will glow when the battery level is low. Please charge the speaker immediately.

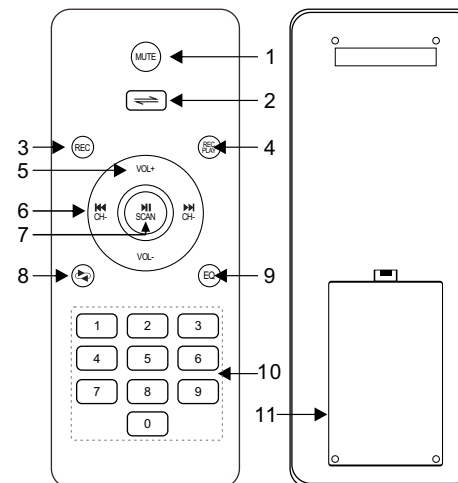
- 23.- **POWER**: On/Off switch of the portable amplifier.
- 22.- **DC INPUT**: Connection terminals for DC 12V.
- 24.- **GT. IN**: Entrance for guitar connection, connector jack 6.3 mm.

Handheld/Headset Microphone



- 1.- **Operating indicator**: When the switch is set to the ON position or the central position (STANDBY), the indicator light will turn green. When the batteries are low, the indicator light will turn red. Proceed then to replace the batteries with new ones.
- 2.- **Operation switch**: 3 positions, ON, STANDBY (center position) and OFF. Put it in the ON position for its operation. Set the switch to the center position (STANDBY) to save battery power and the microphone will turn on immediately when it is turned ON. Before turning the microphone on or off, be sure to set the amplifier and receiver volume to a minimum to avoid damaging the speakers due to excessive volume spikes.
- 3.- **Battery cover**: Unscrew this cover to access the battery holder. Use two batteries type LR6-AA, preferably alkaline. When inserting the batteries, make sure that the polarity is correct.

Remote Control



- 1.- **MUTE**: Press to mute the speaker.
- 2.- : Allows you to select between different audio sources: USB storage device, SD memory card, Line input or Bluetooth.
- 3.- **REC**: Start recording.
- 4.- **REC**: Play the recording.
- 5.- **VOL+/-**: USB/SD/MP3 player module volume controls.
- 6.- : Play the previous song or next song.
- 7.- : Start and pause playback.
- 8.- : Set the loop mode of the songs to repeat one or repeat all.
- 9.- **EQ**: Allows you to select between different equalizations.
- 10.- **0-9**: Select the song by number.
- 11.- **Battery cover**: Unscrew this cover to access the battery holder. Use two batteries type LR6-AAA, preferably alkaline. When inserting the batteries, make sure that the polarity is correct.

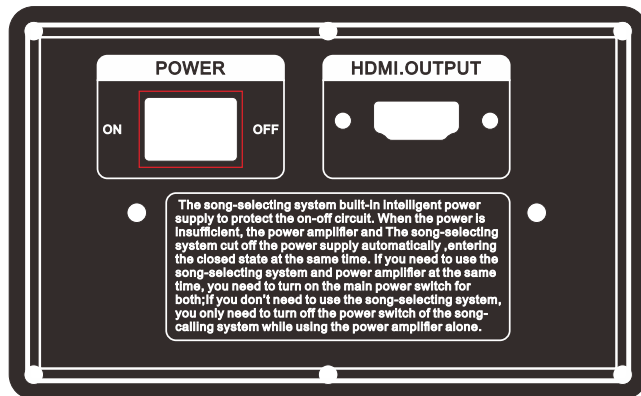
SCREEN UI WHEN TURNING ON SPEAKER



When turn on the speaker, please also turn on the power control of screen at the backside, then the screen will appear the UI as above picture show. It takes 30-60 second to power on, please wait patiently.

Attention: Please turn off the power control of the screen first before power-off; or the screen will be running slower and slower.

BACKSIDE TURNER BOARD



POWER: The switch ON/OFF power is applicable to the power control of screen.

HDMI OUTPUT JACK: HDMI can be applicable in set-top boxes, DVD players, personal computers, TVs, game consoles, integrated amplifiers, digital audio.