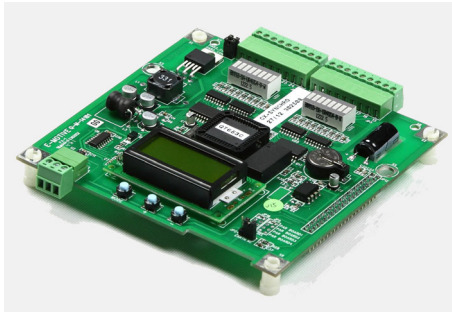


### Synchronizer



#### Features:

- Modular extension board which includes a real time clock
- Provides date and time to displays
- Synchronizes date and time for displays within a group of multiple elevators
- Available in stackable version to work with Encoder CX-BASIC

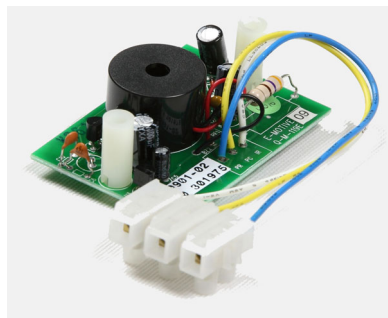
### Voice Annunciator



#### Features:

- Speech announcement of elevator position and status information
- Background music in between speech announcements
- MP3 format speech and music files
- Supports multiple languages
- Configurable locally via SD Card
- Speech duration not limited
- Adjustable volume
- Speech audio bandwidth up to 16 kHz
- Supports audio transmission distance up to 500 feet
- 8 discrete inputs
- Available in stackable version to work with Encoder CX-BASIC

### Elevator Buzzer



#### Features:

- Offers acknowledgement and audible feedback of call button usage
- 24vdc input trigger at V+, 0V, and push feed
- Works only when elevator is in operation
- Adjustable volume
- Meets requirements of EN81-70 for elevator call registration feedback