



**SmartView System  
Part #: 2100-SVSCOMP**

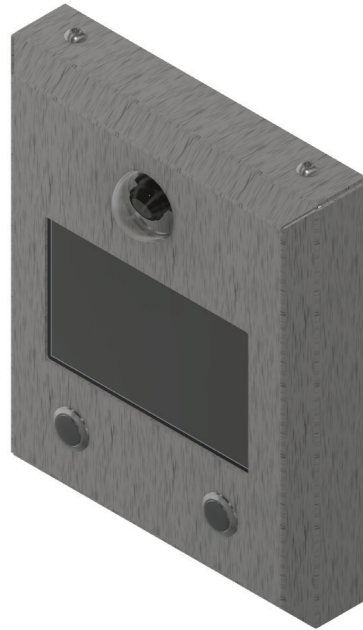
**Features:**

- **Overall Dimensions:** 7.5" H x 7" W x 1.25" D
- **Operating Temperature:** 32°F to 158°F (0°C to 70°C)
- **Power Requirement:** 12v or 24v through 2100-SVE Extender
- Surface mount
- All-in-one mounting box includes Display, Camera, and Buttons
- Includes a 16' cable to connect the Camera to the SmartView Controller, 20' HDMI cable to connect the Display, and 20' wire to connect the YES/NO Buttons
- Compatible with the SmartView Software
- SmartView Controller Board sold separately
- **Data Usage:** 4.4 mb/minute in active state  
0 in idle state (pings every 24 hours)
- **Current Draws**
  - Board:** 12v = 1A, 24v = 0.5A
  - Camera:** 5v = 0.12A (powered by board)
  - Display:** 5v = 0.59A (powered by board)
  - Total:** 12v = 1.46A, 24v = 0.73A

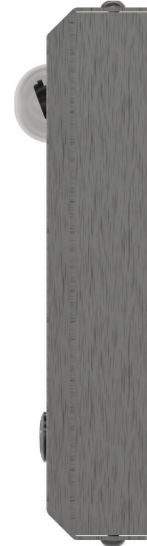
**ASME A17.1 2019 Code Change Compliant**



Front View



Angled View



Side View

