

**SmartView Controller**  
**Part #: 2100-SVC & 2100-SVC-1**

**Features:**

- **Overall Dimensions:** 4" H x 7" W x 1.2" D
- **Operating Temperature:** 32° F to 158° F (0° C to 70° C)
- **Power Requirement:** 12v or 24v through 2100-SVE Extender
- **2100-SVC:** Press Yes or No Button
- **2100-SVC-1:** Press Door Open for Yes, Press Door Closed for No
- Compatible with the SmartView Software
- Compatible with the SmartView Display
- Connection for the SmartView Camera
- Dry contacts for Yes/No inputs
- Controller Board features a uniquely assigned ID address for easy software setup
- Requires CAT5 or better Ethernet connection or connection to a 2-wire extender
- Requires power from the elevator or remotely in the machine or electrical room
- Mounting plate included
- Certified to CSA Standard B44.1, conforms to ASME Standard 17.5
- **Data Usage:** 4.4 mb/minute in active state, 0 in idle state (pings every 24 hours)
- **Current Draw**

**Active:**

- 12v = 1A
- 24v = 0.5A

**Idle:**

- 12v = 0.5A
- 24v = 0.25A

**Installation Requirements:**

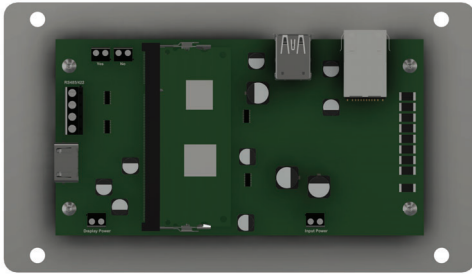
**1. Internet Connection:**

- Routed internet connection using DHCP, OR
- Cellular modem with data (available from Janus)

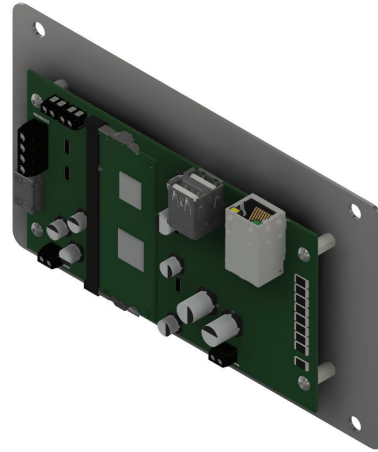
**2. Laptop with a network connection for testing**

**ASME A17.1 2019 Code Change Compliant**

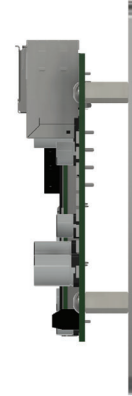
415 Oser Avenue, Suite Q • Hauppauge, NY 11788  
1-800-527-9156 • www.januselevator.com



Front View

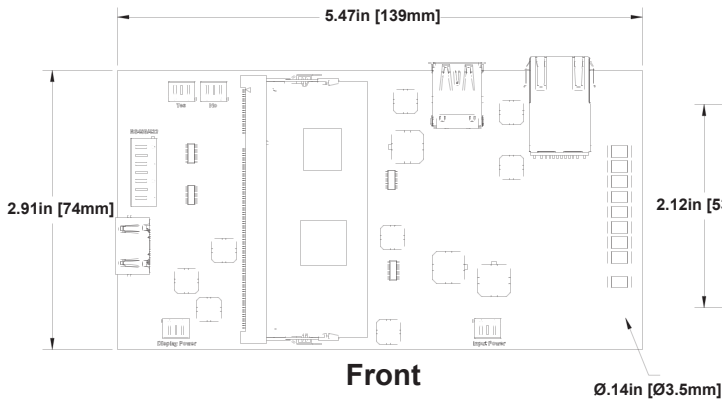


Angled View

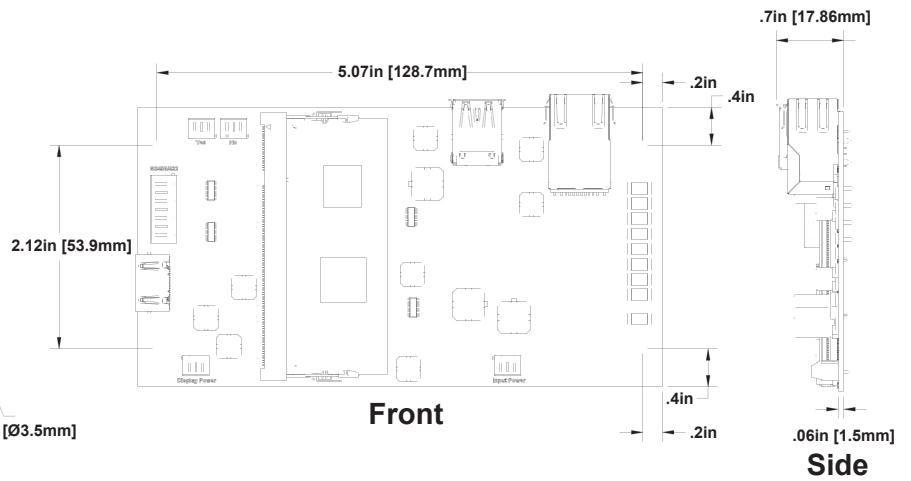


Side View

**Controller Board:**



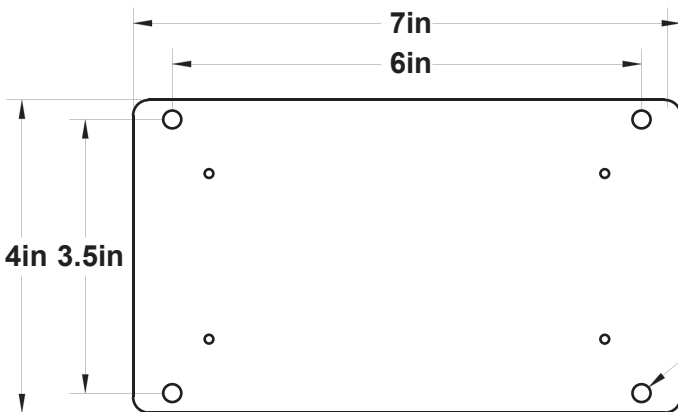
Front



Front

Side

**Mounting Plate:**



Front



Side