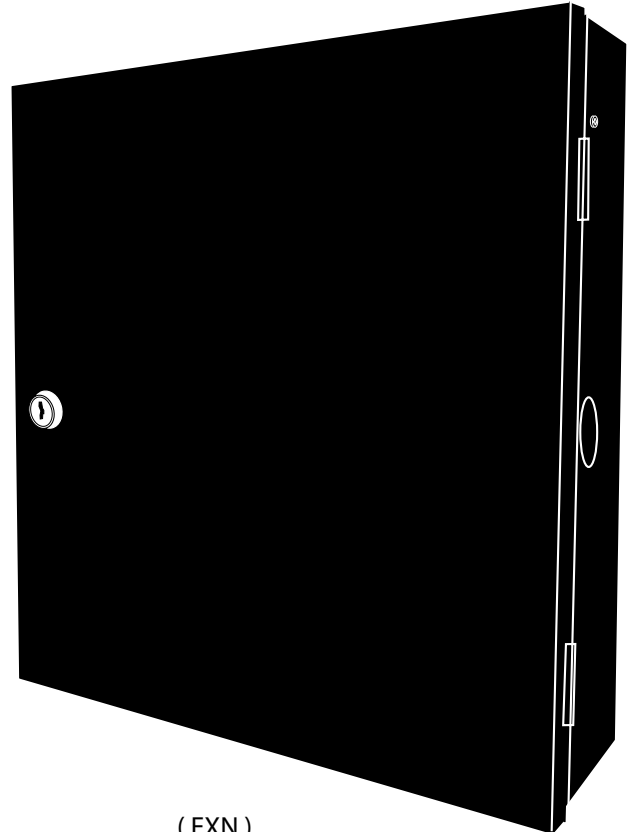


EN Series / EXN

Telephone Entry & Access Control System



(EN-2A4)



(EXN)

Quick Start Guide

(P/N: EN-2A4 / EN-2M4, EN-2A7 / EN-2M7, EN-2A10 / EN-2M10, and EXN)

NORTEK
SECURITY & CONTROL
USA & Canada (800) 421-1587 & (800) 392-0123
(760) 438-7000 - Toll Free FAX (800) 468-1340
www.nortekcontrol.com

NOTE: This Quick start guide is applicable to EN Series Telephone Entry system units EN-2A4 / EN-2M4, EN-2A7 / EN-2M7, EN-2A10 / EN-2M10, and EXN.

Network Installation Options and Connections

An access control network allows shared programming and user information between systems. Networks make system programming and facility management much easier in multi-unit installations.

The EN Series Telephone Entry & Access Control System is designed to be compatible with each other when residing in a multi-unit network operating environment.

IMPORTANT COMPATIBILITY NOTE: The legacy Linear access control Models AE-1000, AE1000Plus, AE-2000, AE2000Plus, AM3, and AM3Plus are of a different hardware and software design and CANNOT be used in networks mixed with the new generation Models EN-2A4 / EN-2M4, EN-2A7 / EN-2M7, EN-2A10 / EN-2M10 and EXN.

Local Area Network

In installations where there is an existing Local Area Network used for interconnecting various computers and peripherals to the Internet, the unit's LAN PORT is sufficient for connecting the system. The unit will need to be configured with the correct network settings before connecting to the network (see the Configuring for a Local Network section).

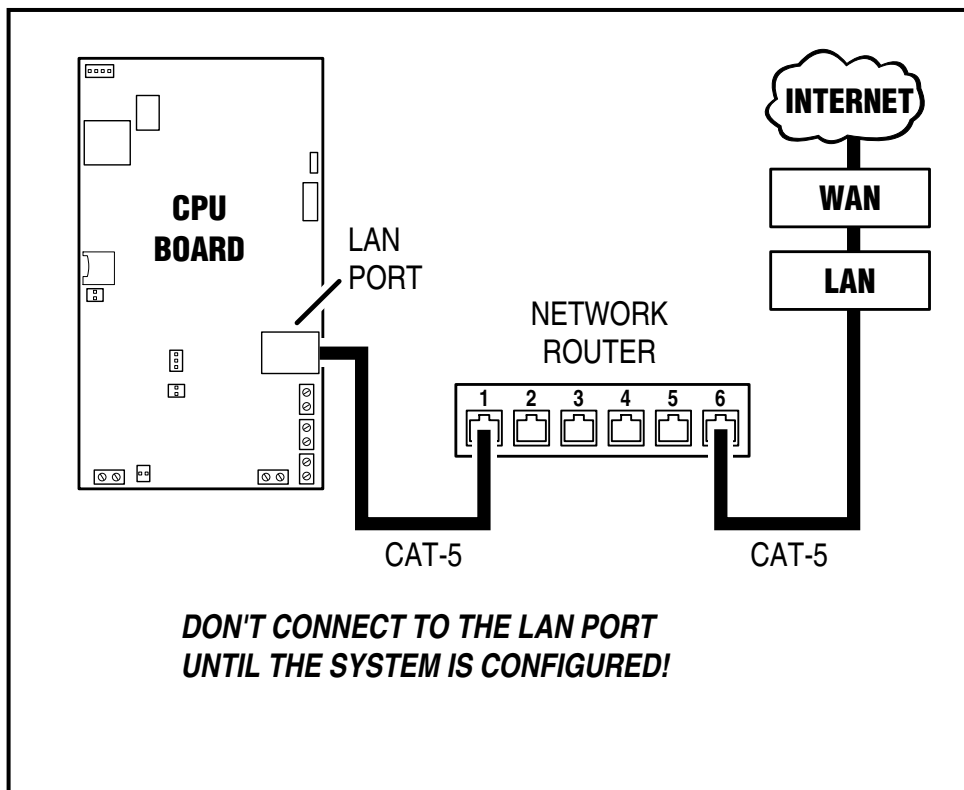
If the unit is going to be connected to a Local Area Network, it must be located in a trusted network environment where a protected network security system (firewall, etc.) is installed and maintained.

Prepare the system for connection to the Local Area Network by running the Cat-5 cable between the unit and the network router. Wait until further configuration of the system's network settings (see the Configuring for a Local Network section) before actually plugging in the network cable into the LAN PORT of the unit.

1. Find the location of the Local Area Network router that will serve the EN Series system.
2. Select a Cat-5 cable long enough to run from the Local Area Network router to the specific unit being connected.
3. Route the Cat-5 cable into the unit's enclosure and bring it close to the LAN PORT jack. DO NOT PLUG THE CABLE IN YET.

NOTE: For ETL installations, the maximum Cat-5 cable length allowed is 30m (98.5 FT).

Configure all (if any other) units in the network following the preceding steps.



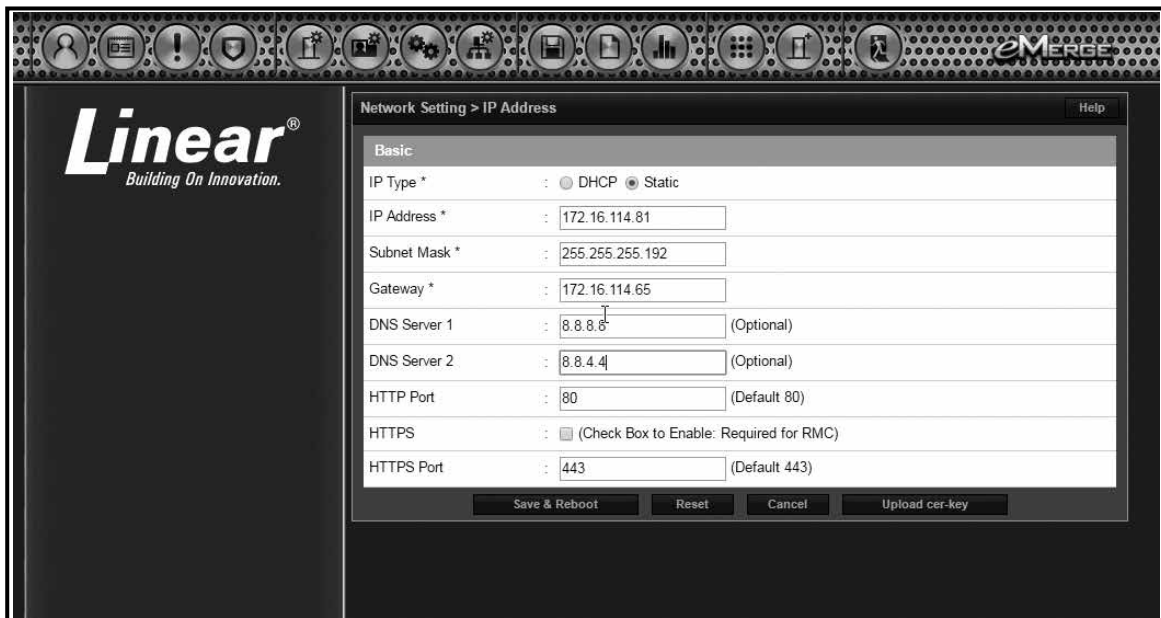
Preparing for the Network

To allow for the EN Series unit to be recognized on the local network, it is necessary to change the controller's IP address.

1. Connect your programming computer directly to the Ethernet port of the controller.
2. Assign a static IP address of 192.168.0.149 to the computer. (For instructions on how to change the static IP address of a Windows computer, please visit: <http://technet.microsoft.com/en-us/library/ff710457>).
3. After assigning the static IP address, open a web browser and enter the IP address of the controller (Default = 192.168.0.250).
4. The controller presents the Linear login page. To log on, enter the default user ID and password (admin/admin).
5. Browse to the Network Configuration (IP address) page as shown. Enter the static IP address, Subnet Mask, Gateway and DNS server (provided by the network administrator) so that it matches the requirements of the local network.
6. Click Save & Reboot and the system will reboot. (Reboot will take approximately 2 minutes.)

NOTE: The system data will be lost if the controller is powered down without performing **Save & Reboot**.

7. Disconnect the programming computer from the control panel. The system is now ready for the local network



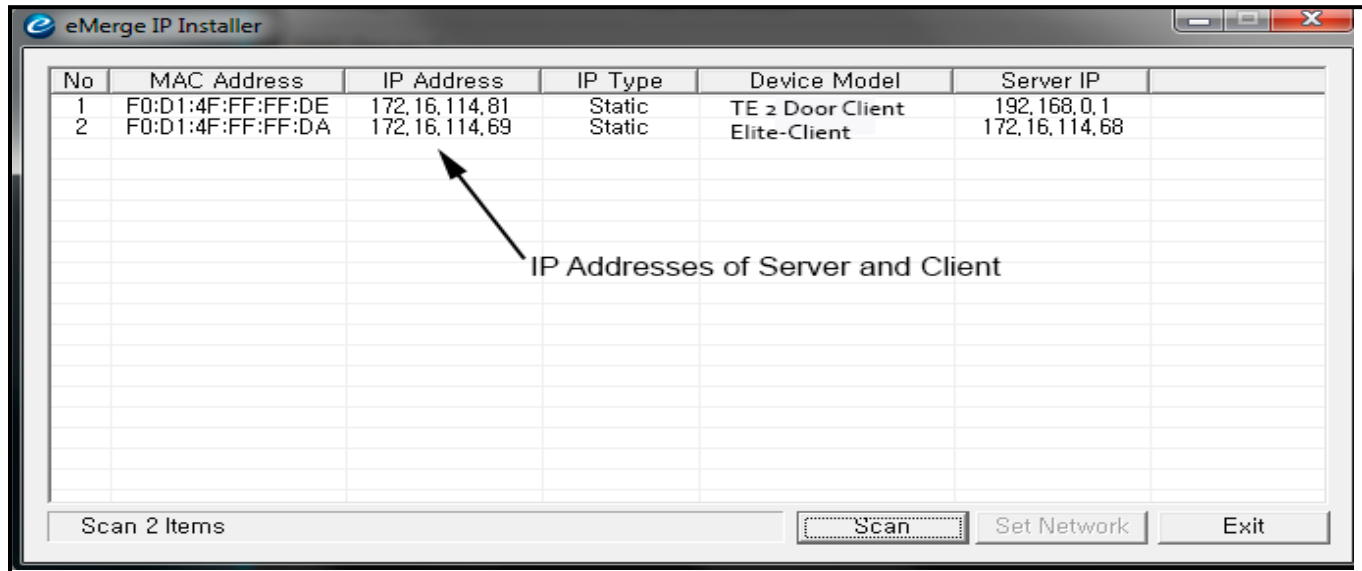
Connecting the Network

1. Pull an Ethernet cable through the opening in the enclosure nearest the Ethernet port.
2. Plug the RJ-45 connector into the Ethernet port on the controller.
3. Connect to the local area network (LAN)
4. If the network connection is functioning properly, the LAN LEDs on the control panel will illuminate. The local computers will then be able to access the system by entering the IP address of the controller.

Identifying the Server and Client

EN Series units provide the ability to add additional controllers to expand the amount of doors, inputs, and outputs. These additional controllers are referred to as clients. A client can be mounted on top of the main controller (server) or in a separate enclosure. IP Installer is a utility located on a thumb drive shipped with all systems. This utility provides a simple method of identifying the IP address of the controller(s).

1. Connect all controllers to the local network.
2. Connect a thumb drive to a Windows computer on the local network.
3. Locate IPInstaller.exe and double-click the file.
4. IP Installer will open. Click Scan to search the network for controllers.
5. When controllers are identified they will be listed in IP Installer.



Configuring the Server and Client

The default IP address of the server and client is 192.168.0.250. To avoid conflict on the network, the IP address of the client and server must be changed as follows:

1. Connect the server to the network.
2. Open IPInstaller.exe and click Scan.
3. Select the server from the list and click Set Network.
4. Enter a new IP address for the server. This information must be provided by the IT Administrator.
5. Change the Subnet Mask and Gateway to meet the requirements of the local network. This information must be provided by the IT Administrator.
6. Enter the IP Installer password (default = 4321) and click OK.
7. Connect the client to the network and repeat steps 1 through 4 to change the client's IP address.

Controller to Client Conversion

Important: Please contact Nortek Security and Control technical support for assistance during this implementation. (800)-421-1587 or 760-438-7000

Note: All TE controllers and clients must be operating on the same software revision. System failure may occur if not updated to the same software revision. Refer to Nortek Security and Control technical support for assistance in determining and/or updating the software revision.

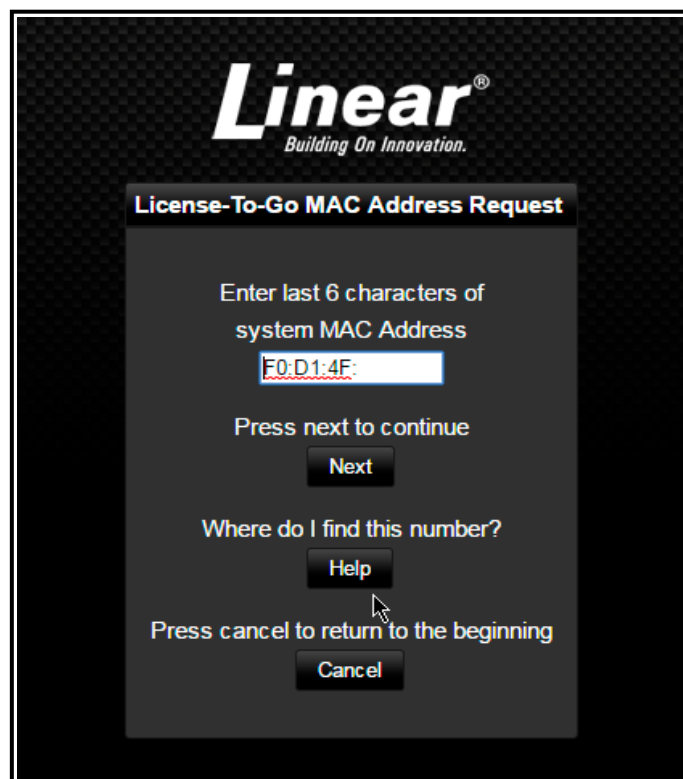
1. Locate the panels MAC address.

Option 1: Locate on the control board and of the unit you are converting to a client. On the main PC board document the unit MAC address.

Option 2: Retrieve the MAC from the panel license page.



2. Log onto www.e3upgrade.com.
3. Click the *License Now* button.
4. Enter the last six (6) characters of the system MAC address.
5. Click Next.



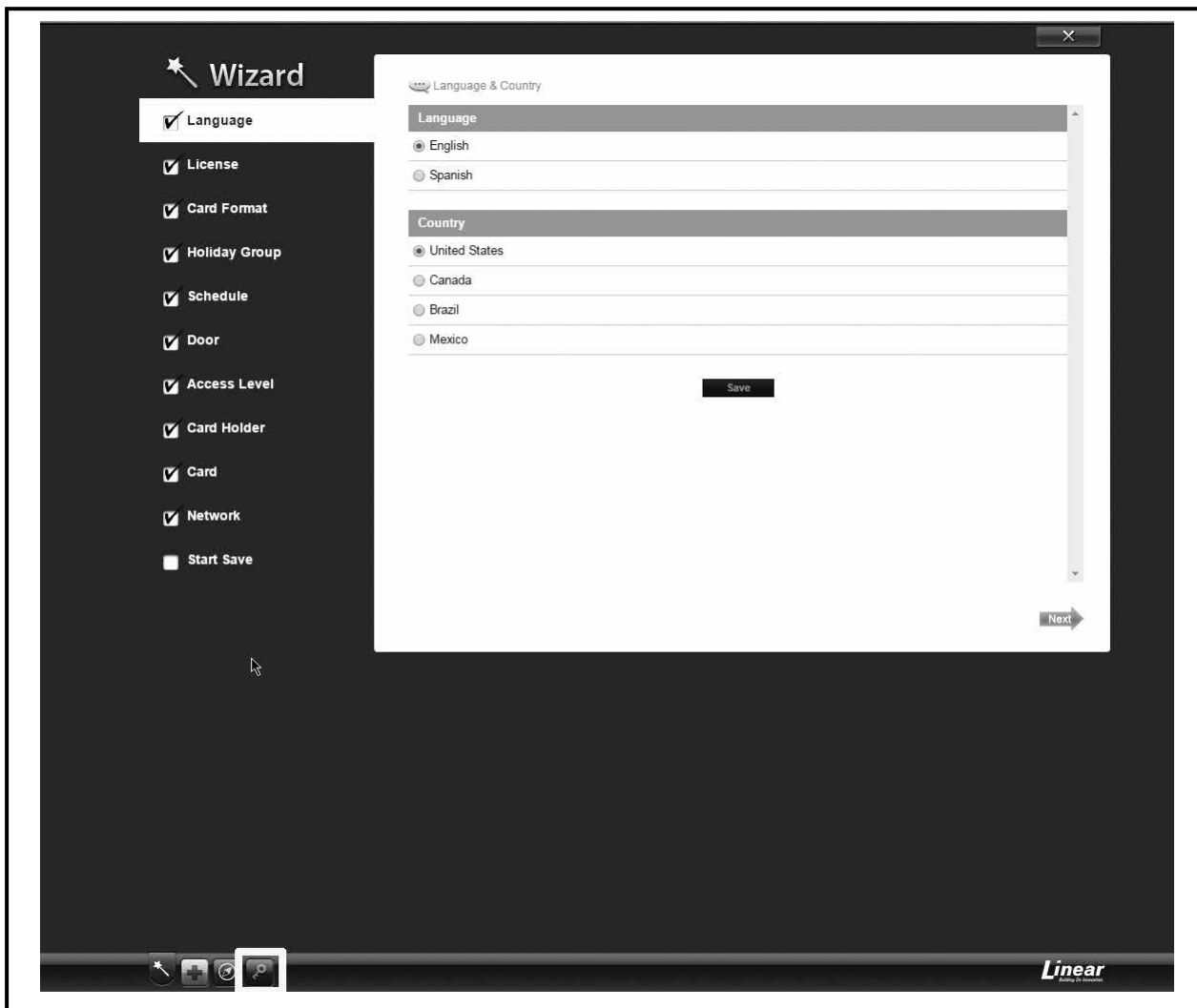
Controller to Client Conversion (continued)

6. Locate the license client key sheet document contained in the manual and hardware packet.

The system now will provide a new license key. When this key is applied to license the panel will convert from a server role to a client role

7. Copy this key so it can be pasted into the license screen.
8. Enter information into the correct fields.
9. Click next.
10. Apply power to TE Display unit.
11. Log into the controller and verify what version system software is running.
12. Log into your system and verify software revisions are identical.

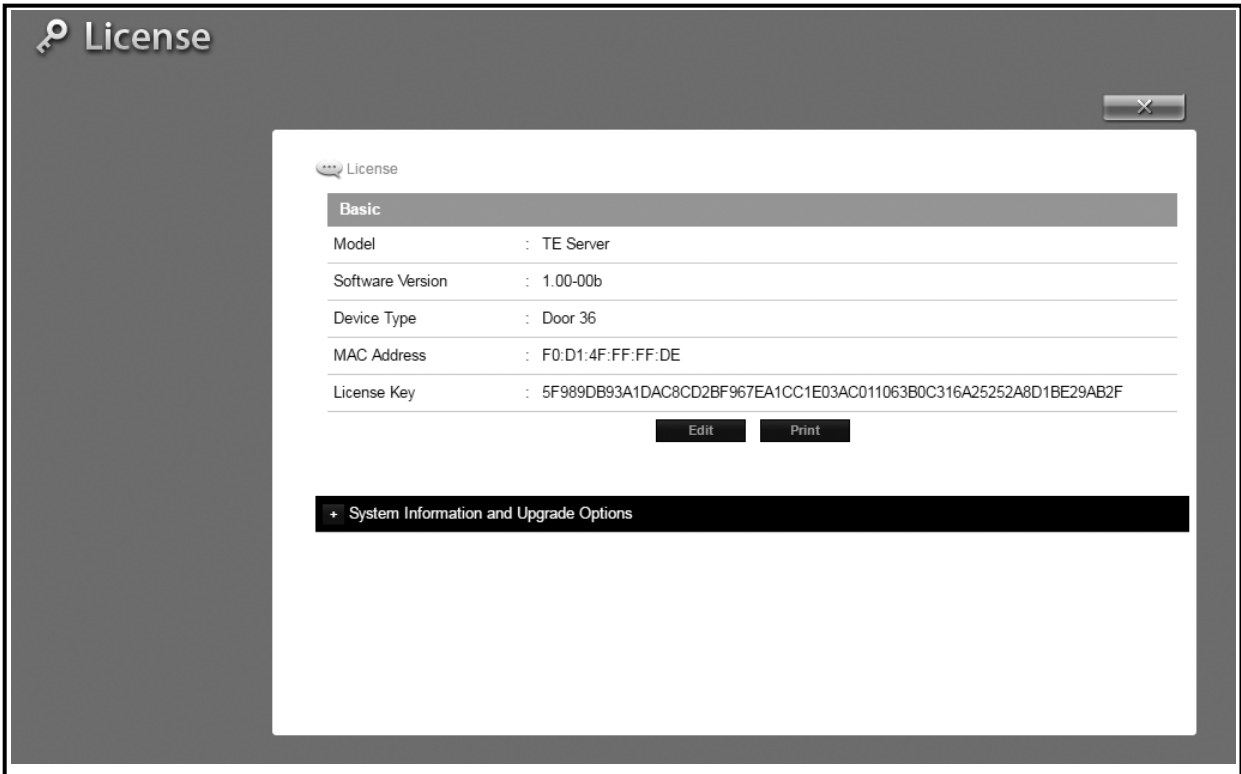
If they are not, proceed to the upgrade tab within the software. You may need to perform this on all units to be networked together. Default IP address: 192.168.0.250. admin/admin



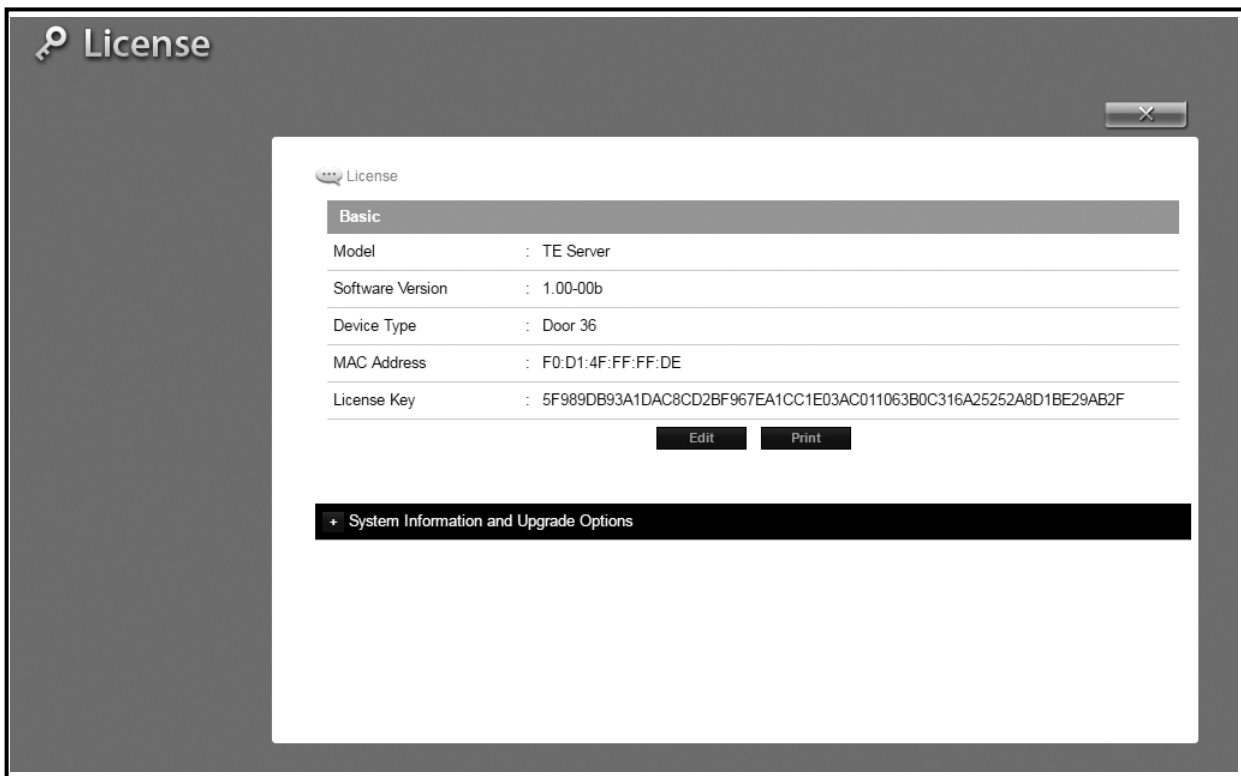
13. Click on the Green Key on the bottom of the page to validate software version and change the license key.

Controller to Client Conversion (continued)

- 14. The license page provides Software version, MAC Address and Edit key to change the license key.
- 15. Click on the Edit key and past the new license



- 16. Click Save.



NOTE: The TE Front End is now a client which can be added to the EN Models as an expansion Module. The license screen will now say TE 2 Door Client.

- 17. Follow the Programming manual for how to add a client.

Creating a New User Profile

Specific information must be input into the system to establish basic user profile.

Perform the following steps to create a new user profile.

1. On the main navigation menu, Click New User button. The Resident data entry fields will appear.
2. Input relevant data into data entry boxes provided under the Personal section. A * denotes required information.

NOTE: The Phone Number field **MUST** be filled out with a valid phone number in order for the system to provide voice-to-voice connection with incoming calls.

3. In the Card Enrollment data entry section, Input relevant data into data entry boxes. A * denotes required information.
4. The Card Number data entry line information can be input manually, or the card can be scanned.
5. In the Access Level section, assign the Type and Level appropriate for user profile.
6. When all data is entered, Click Save.

Add a Card


Individual cards must be entered into the system.

1. Click the Add Card button.
2. Input data into data entry boxes provided. A * denotes required information.
3. Ensure the Directory Listed check box is checked.
4. Enter a unique Entry Code. The system will notify user if entered code is not valid.
5. In the Entry Code section, input a unique entry code.
6. Select appropriate security Level and applicable access points.
7. Click Save.

Repeat process for the number of new users required to be input into the system.

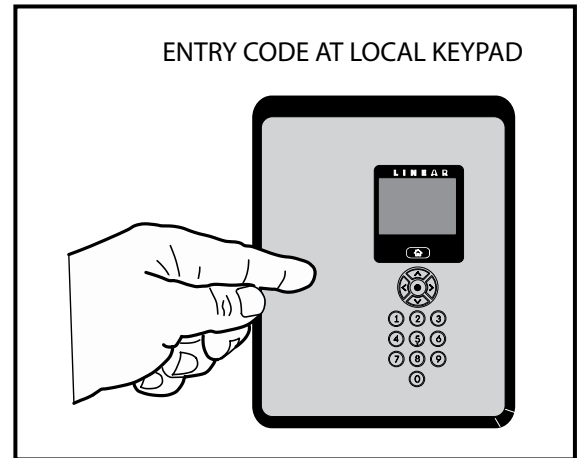
EN Unit Operation

Requesting Access with an Entry Code

- Residents have up to 40 seconds to key in their entry code.
- Up to eight seconds are allowed between each keystroke.
- All digits of the entry code must be entered. Example: If the entry code length is set for four digits, and the code is 0042, the user must enter "0 0 4 2".
- If the wrong key is pressed, pressing the  key will reset the keypad. The correct code can then be entered.

NOTE: For Model EN-2A10 / EN-2M10 key entry occurs via the touch screen only.

- After a correct code is entered, and if the conditions for granting access are fulfilled, the programmed relay will activate for the programmed time.
- If the number of incorrect codes entered exceeds the keypad lockout count, the keypad will be locked and not accept any entries for one minute.
- If the Anti-passback feature is enabled, the entry code will be unusable until the anti-passback time expires.





Requesting Access with a Wireless Transmitter

- Activate a wireless transmitter within radio range of the unit's antenna.
- After a valid transmitter is decoded, and if the conditions for granting access are fulfilled, the programmed relay channel will activate for the programmed time.
- If the Anti-passback feature is enabled, the transmitter will be unusable until the anti-passback time expires.

Requesting Access with a Visitor Call

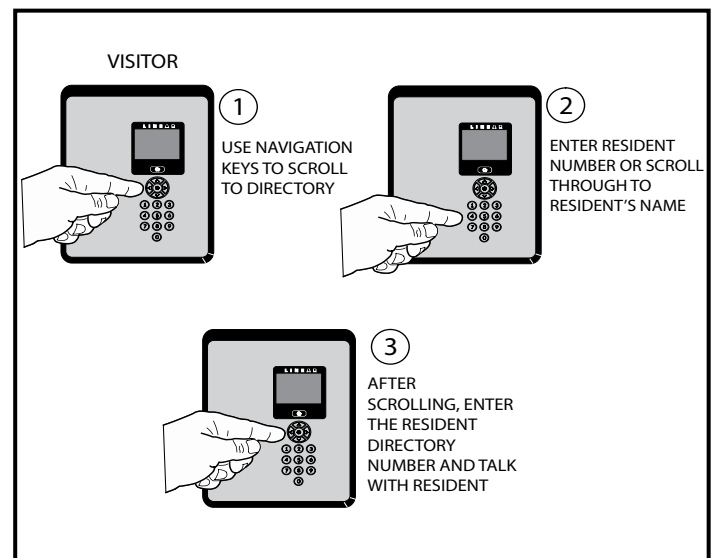
- Navigate to Resident Directory using Navigation keys.
- Scroll through the alphabet to the first letter of the last name.
- Press Enter.
- Scroll through name list to desired entry.
- Press Enter to call.
- If the visitor already knows the resident's directory number, they can enter the directory number to call the resident.
- The system dials the resident's telephone number to establish 2-way communications.

NOTE: The resident's telephone number will never be displayed to the visitor.

- If the resident is using the telephone at the same time a visitor calls, the display will indicate to the visitor that the line is busy.
- The resident answers the call and converses with the visitor to determine if access will be granted.
- The resident can use their telephone's keypad to grant access activating Relay Channel "A" by pressing . After access is granted, the system will disconnect the visitor and resident call.
- The resident can disconnect the visitor without granting access by pressing  or by hanging up.

NOTE: The telephone keys that the resident presses can be customized for the installation.

- The length of time the visitor is allowed to talk can be programmed from 30-300 seconds.



Limited Warranty

This Nortek Security & Control LLC product is warranted against defects in material and workmanship for twenty-four (24) months. This warranty extends only to wholesale customers who buy direct from Nortek or through Nortek's normal distribution channels. Nortek Security & Control LLC does not warrant this product to consumers. Consumers should inquire from their selling dealer as to the nature of the dealer's warranty, if any. There are no obligations or liabilities on the part of Nortek Security & Control LLC for consequential damages arising out of or in connection with use or performance of this product or other indirect damages with respect to loss of property, revenue, or profit, or cost of removal, installation, or reinstallation. All implied warranties, including implied warranties for merchantability and implied warranties for fitness, are valid only until the warranty expires. This Nortek Security & Control LLC Warranty is in lieu of all other warranties express or implied.

All products returned for warranty service require a Return Authorization Number (RA#). Contact Nortek Security & Control Returns at 1-855-546-3351 for an RA# and other important details.

FCC Notice

Changes or modifications not expressly described in this manual or approved by the manufacturer could void the user's authority to operate the equipment.

This equipment has been tested and found to comply with the limits for a Class B digital device, pursuant to Part 15 of the FCC Rules. These limits are designed to provide reasonable protection against harmful interference in a residential installation. This equipment generates, uses and can radiate radio frequency energy and, if not installed and used in accordance with the instructions, may cause harmful interference to radio communications. However, there is no guarantee that interference will not occur in a particular installation. If this equipment does cause harmful interference to radio or television reception, which can be determined by turning the equipment off and on, the user is encouraged to try to correct the interference by one or more of the following measures:

- Reorient or relocate the receiving antenna.
- Increase the separation between the equipment and receiver.
- Connect the equipment into an outlet on a circuit different from that to which the receiver is connected.
- Consult the dealer or an experienced radio/TV technician for help.