



CAN-AM MAVERICK X3 PRECURSOR SPARE TIRE CARRIER

PART NUMBER: BRX3M-11-0001

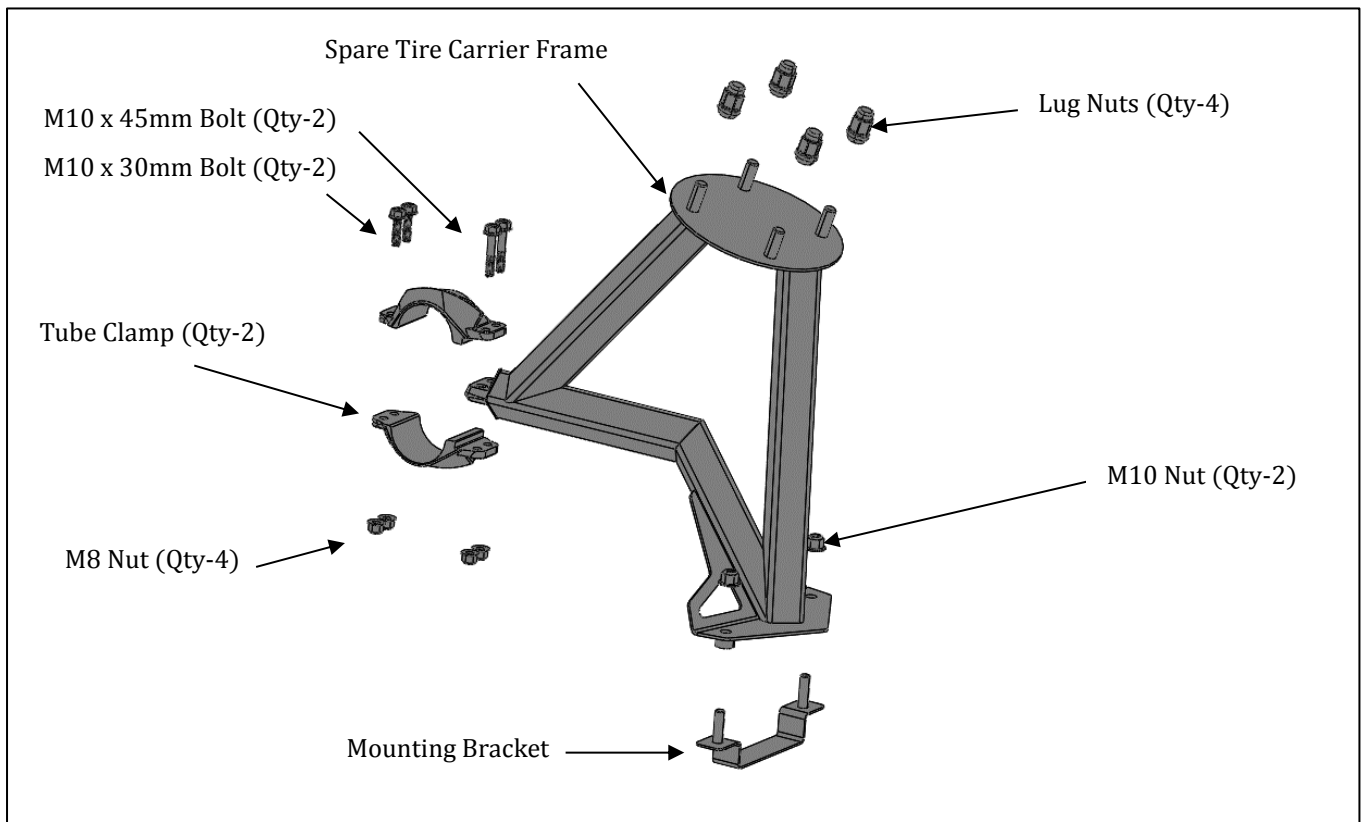
INSTALLATION INSTRUCTIONS

- IMPORTANT -

Please read these instructions thoroughly and ensure all parts and tools are accounted for before beginning installation.

WARNING!

- This kit is designed for specific applicable models only. It is not recommended for units other than the one (those) for which it was sold.
- Torque wrench tightening specifications must strictly be adhered to.
- Should removal of a locking device (e.g. lock tabs, self-locking fasteners, etc.) be required when undergoing disassembly/assembly, always replace with a new one.
- For your safety, and to ensure a satisfactory installation, perform all installation steps correctly in the sequence as shown on the attached instructions. Please wear safety glasses while performing the steps in the following instructions.
- Proper installation is solely the responsibility of the installer, and will not be assumed by Aprove Products Co., Ltd.



Included Items -

- (1) Spare Tire Carrier Frame
- (2) Tube Clamp
- (1) Mounting Bracket
- (4) Lug Nuts
- (2) M8 x 1.25 x 30mm Hex Head Bolt
- (2) M8 x 1.25 x 45mm Hex Head Bolt
- (4) M8 x 1.25 Nylock Nut
- (2) M10 x 1.5 Nylock Nut

Required Tools for Installation

- 3/8" Drive Socket Wrench
- 13mm – 3/8" Drive Socket
- 15mm – 3/8" Drive Socket
- 13mm – Combination Wrench

INSTALLATION

1. Begin the installation by placing the tube clamps over the lower rear cage tube as shown below. It is easiest to perform this step from the passenger side of the vehicle. The tube clamps can be moved to the center of the vehicle in later steps.



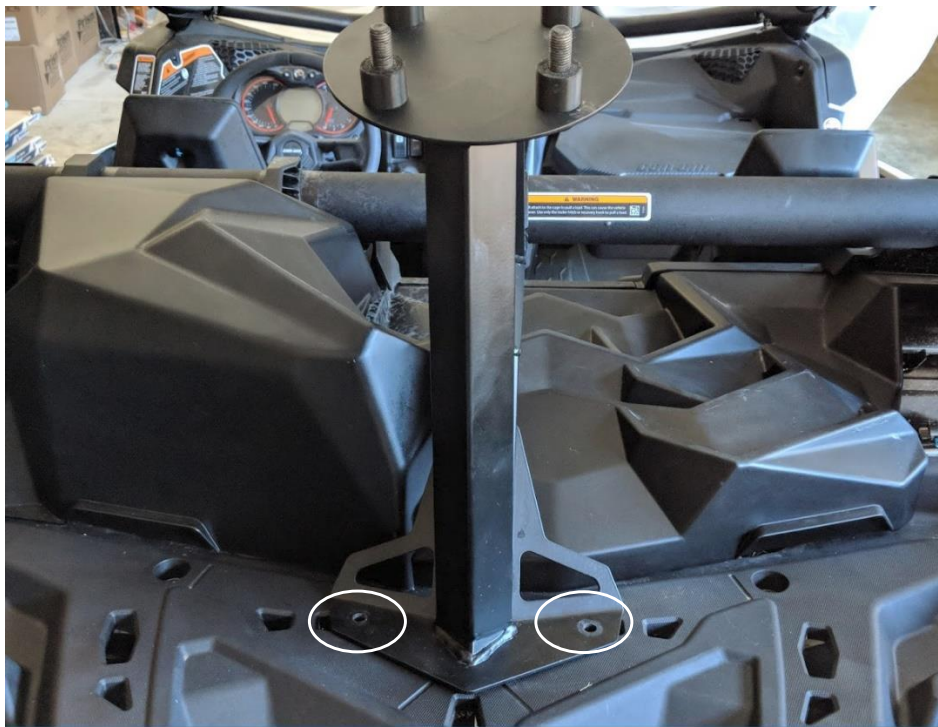
2. Place 2 qty - 30mm hex bolts in the forward most holes and begin threading on 2 qty - 8mm nuts. Do not fully tighten the nuts at this time.



3. Insert the spare tire carrier in between the tube clamps. Place 2 qty – 45mm hex bolts in the rear holes and begin threading on 2 qty – 8mm nuts. Do not fully tighten the nuts at this time.



4. Slide the spare tire carrier to the center of the vehicle. The spacers will fall into the holes of the vehicles rear deck circled below.



- TIP -

Although not required, an additional person can be very helpful in steps 5 and 6.

- From the driver side of the vehicle pass the mounting bracket studs from the underside of the rear deck to the topside through the holes in the spare tire carrier. Shining a light from the topside of the rear deck through the holes in the spare tire carrier make locating the holes much easier.



- With the studs of the mounting bracket passing through the spare tire carrier begin threading 2 qty - 10mm nylock nuts on them. Locate the spare tire carrier in its final position. Tighten the 2 qty - 10mm nuts to 20 ± 2 lbf•ft (28 ± 3 N•m).



7. Finish tightening the 4 qty – 8 mm nuts located on the tube clamps, torque to 20 ± 2 lbf•ft (28 ± 3 N•m).



8. Place a spare tire onto the spare tire carrier. Secure in place using the 4 qty - lug nuts.



9. Verify that the spare tire carrier is fully secured to the vehicle and that all fasteners have been tightened properly.

- TORQUE SPECIFICATIONS -	
M8 X 1.25 Nut – 20 ± 2 lbf•ft	(28 ± 3 N•m)
M10 X 1.5 Nut – 20 ± 2 lbf•ft	(28 ± 3 N•m)

