

FEEL THE HEAT!

Revision No: Initial
 Revision Date: 8/22/2018

Race Pace Bumper

Part # **01-1806** RZR Front Bumper Black

Congratulations on your purchase of the DragonFire Race Pace Front Bumper. Your UTV now has front end protection, while also riding in style!!! Be sure to check out the full line of DragonFire Accessories for your Polaris RZR at your local authorized dealer or online at <http://www.DragonFireRacing.com>

Fits Polaris RZR XP 1000 Models- Not Turbo S



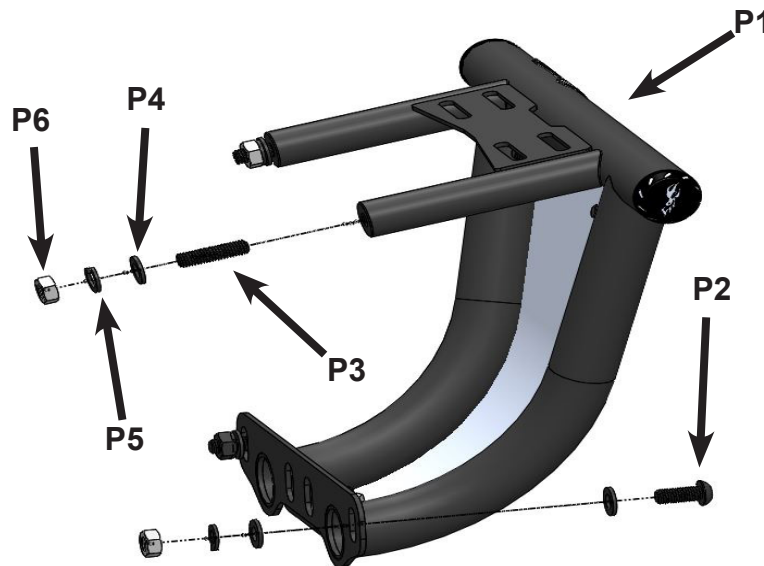
- Read and understand these instructions before installing product
- This product does not provide roll over protection
- Do not use product if there are any signs of damage

Disclaimer

Off road activities can be hazardous and could lead to injury, dismemberment, paralysis and death. No warranty of representation is made as to the products ability to protect the user from any injury or death. The user assumes that risk. The acceptance and /or use of this merchandise purchased from DragonFire by the customer hereby shall release DragonFire from any and all liability pertaining to the use of such merchandise.

Part & Hardware List			
ITEM	QTY	Description	STEP USED
P1	1	Front Bumper With Removable Skid Plate	
P2	2	M10 X 1.5 X 25mm Button-Head Cap Bolts	
P3	2	M10 X 1.5 X 40mm Stud	
P4	6	M10 Flat Washer	
P5	4	M10 Lock Washer	
P6	4	M10 x 1.5 Hex Nut	

Tools Required
Impact Driver
Socket Wrench
16mm Wrench
6mm Allen
5mm Allen
T25
T40



Step 1: Place vehicle on a flat and level surface. Place gear selector in "Park" and remove keys from the ignition.

Step 2: Remove the hardware as shown on (Figure A). Remove plastic cover, and remove the two bolts (Figure B).

Step 3: Remove Grill, and line up the front bumper with the four mounting holes (Figure C).

Note: Make sure that P3 (M10 X 1.5 X 40mm Stud) sticks out at least 7/8".



Step 4: Once the studs are in the upper mounting holes, install the Flat Washer, Lock Washer, and the Nut, in that exact order (Figure D).

Step 5: Add a flat washer to both bolts and install the hardware in the lower mounting points (Figure E). The bolts are installed facing in towards the vehicle. Then add another flat washer, a lock washer, and the nut.

Step 6: Tighten all hardware until the bumper is secured, and re-install all hardware removed from plastics.

Note: Figure F shows the bumper properly installed.

ProTip: Periodically check all hardware and re-tighten if needed.

For further assistance please contact us at customerservice@dragonfireracing.com or 1-800-708-9803.

