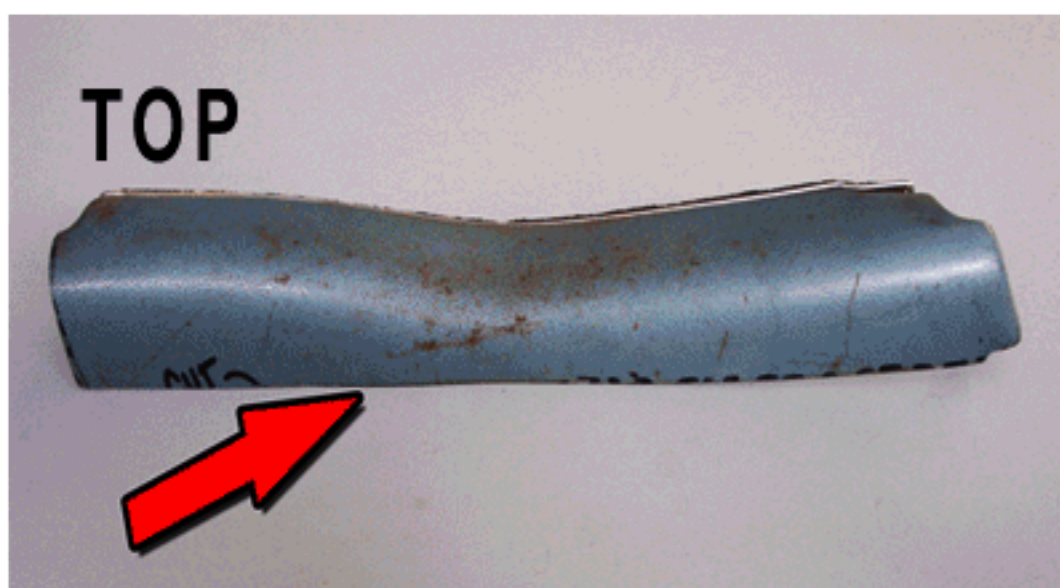


1968-69-70 SHELBY CONVERTIBLE ROLL BAR INSTALLATION GUIDE

Kit Contents:

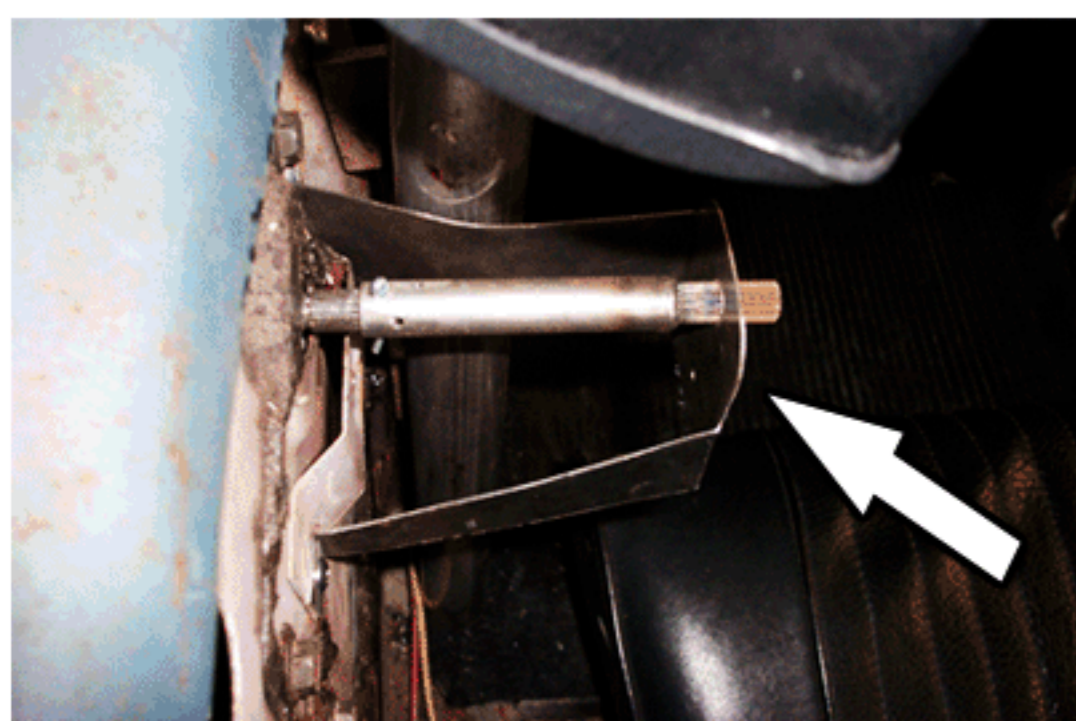
- 1 x Shelby Convertible Roll Bar
- 2 x Bottom Trim Caps (Gaskets)
- 2 x Shelby Interior Trim Panels
- 2 x Crank Shaft Extensions
- 2 x Crank Shaft Extension Brackets
- 4 x Bar Mounting "L" Brackets



STEP 1: Remove rear seat and side trim panels.

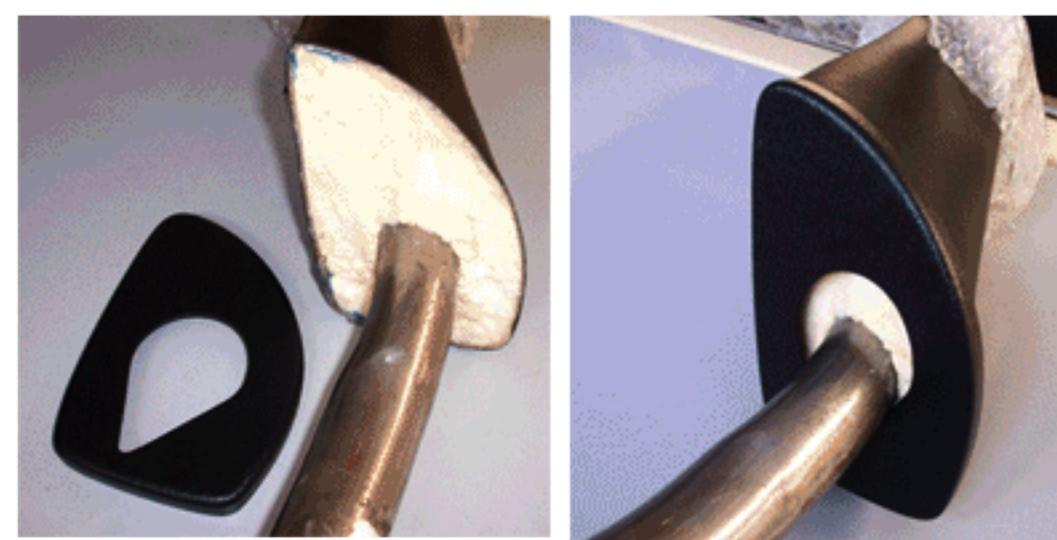
STEP 2 : Cut top section of side panels as shown.

(This is done to the existing side panels on the car, and is done to both right and left sides.)

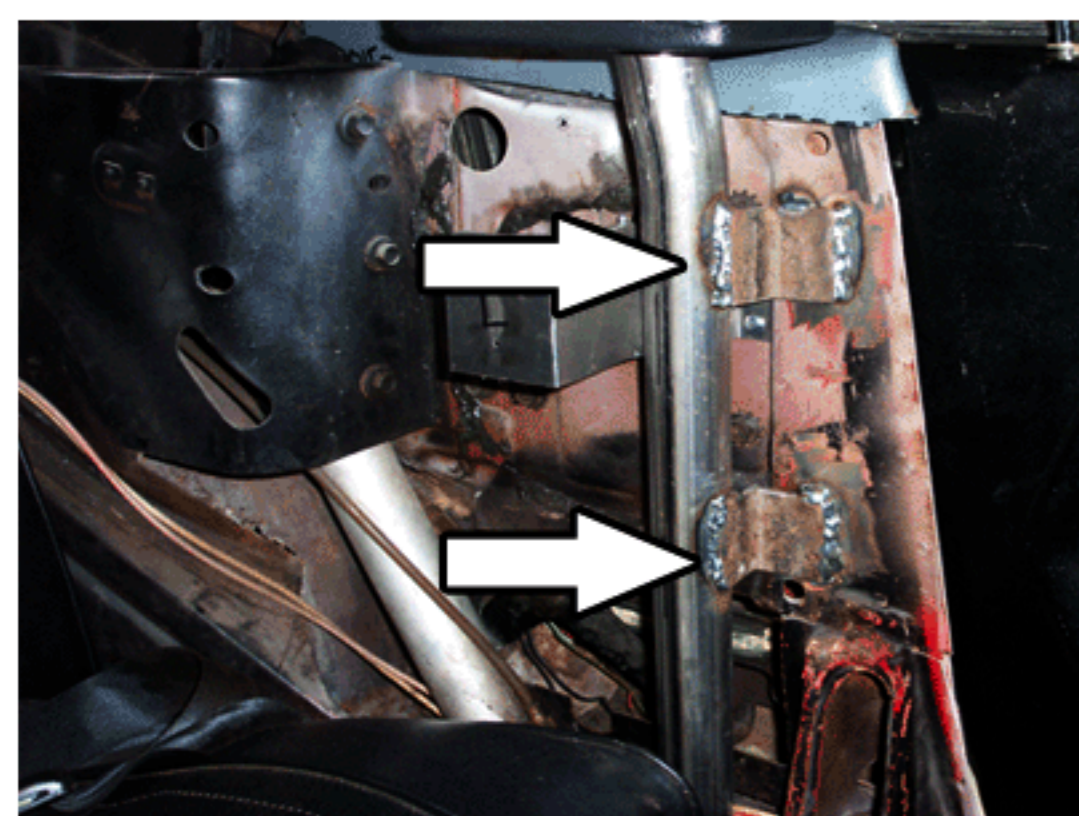


STEP 3: Install window crank shaft extensions and brackets.

(Crank shaft extension is installed first using a cotter pin to attach it to the existing crank then the bracket is used to secure it in place, repeat for both sides of car)

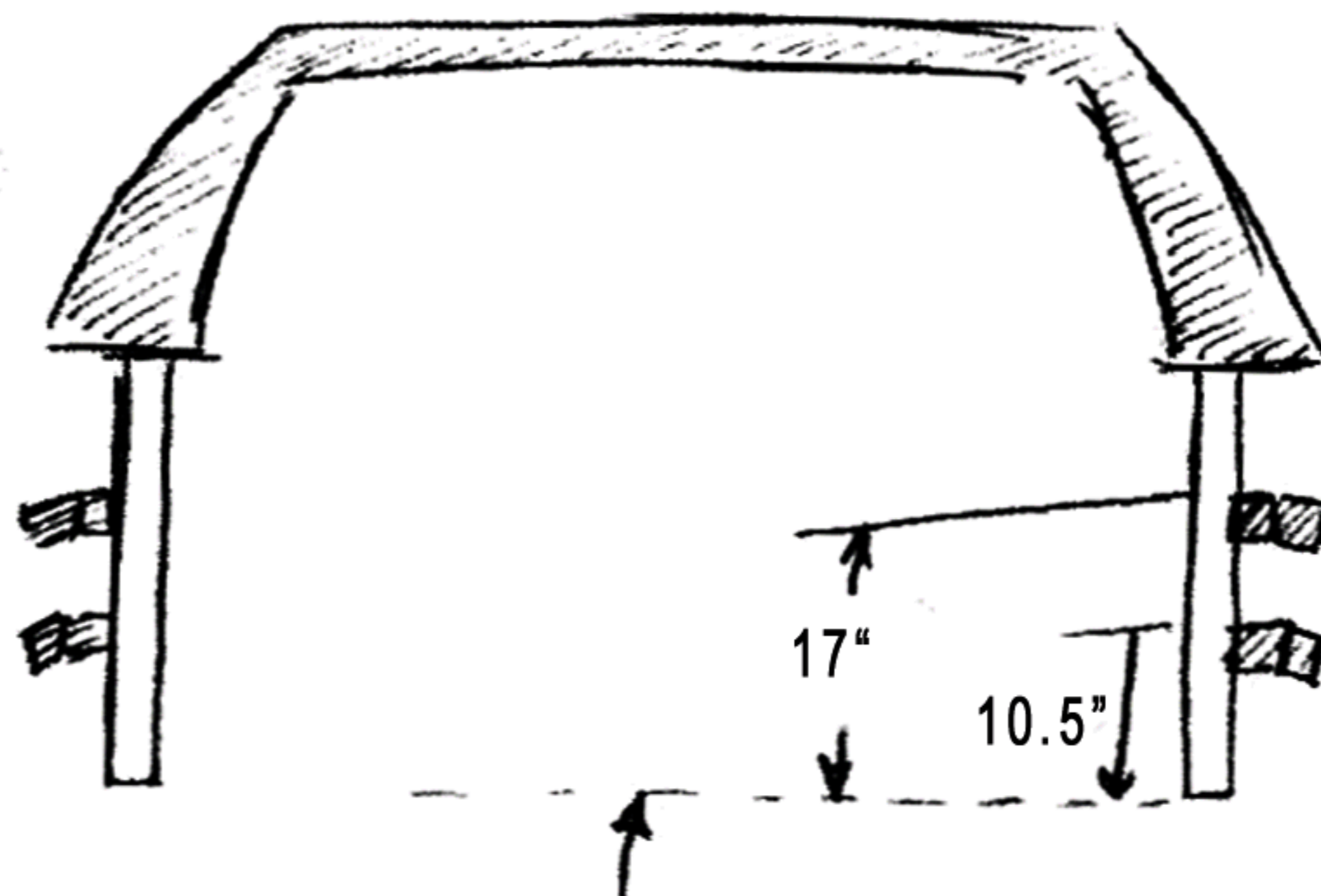


STEP 4: Glue bottom caps (gaskets) onto the roll bar.



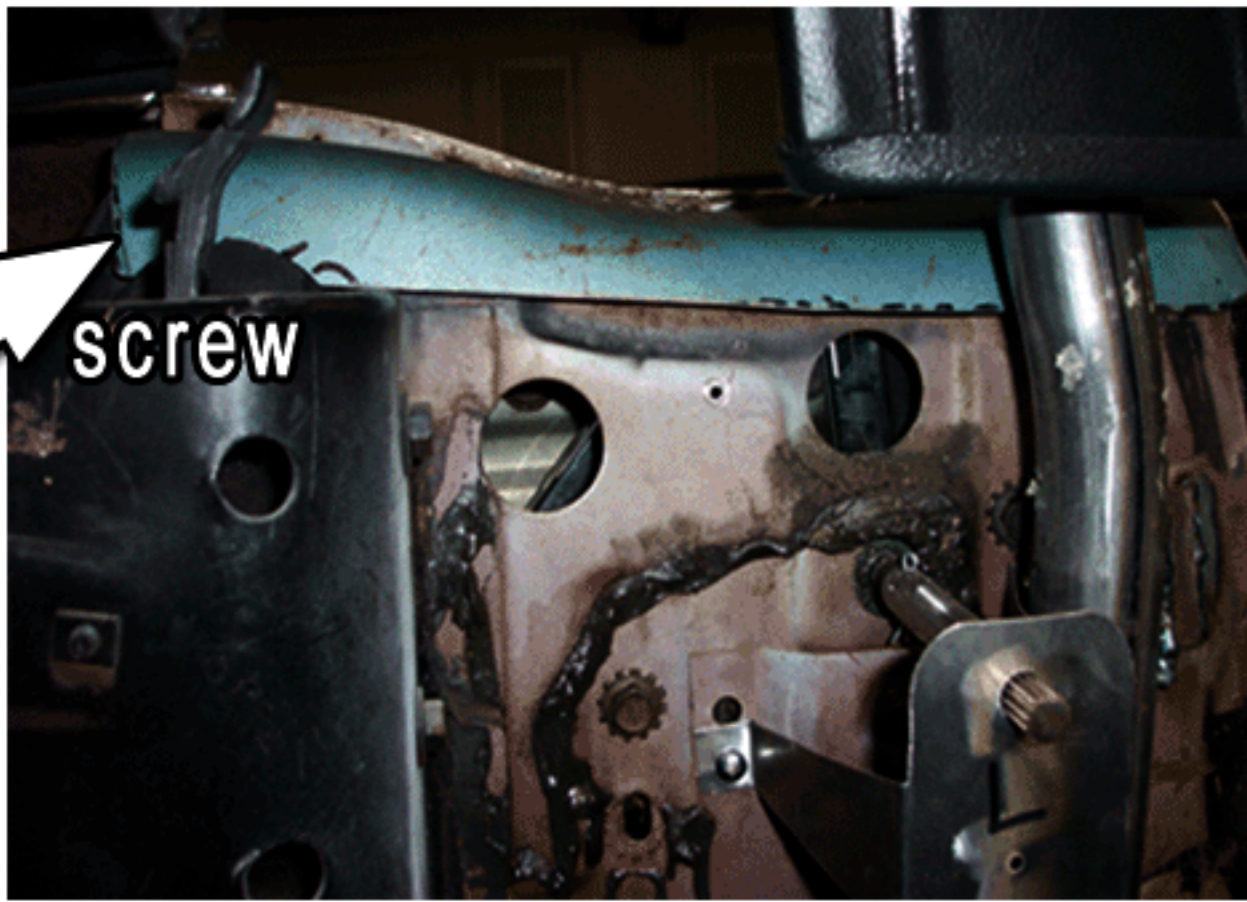
STEP 5: Test fit bar and tack weld in place

(Check for top clearance and side panel fit, then measure and tack weld bar in place using supplied "L" brackets and the diagram shown. After fit is confirmed proceed to make your final welds as shown.)



CONTINUED ON PAGE 2

CONTINUED FROM PAGE 1



STEP 6: Install cut top section of stock trim panel.
(Using the factory interior trim panel top from step 1 install onto car using 2 screws one on top towards front and rear on inner side as marked in photo with arrows.)



STEP 7: Install Shelby Side Panels
(Install the Shelby side panels, with interior screws in various locations and reinstall window crank handle.)

IMPORTANT NOTICES:

This information is provided to serve as a guide for installing this product. We make no warranty or guarantee of installation. If you are not mechanically inclined or not skilled in welding please seek the help of a trained professional to install this product.

This product is designed for **appearance only**. It is **not** designed to protect the vehicle or occupants in the event of a collision or rollover. Therefore, no liability is expressed or implied.