



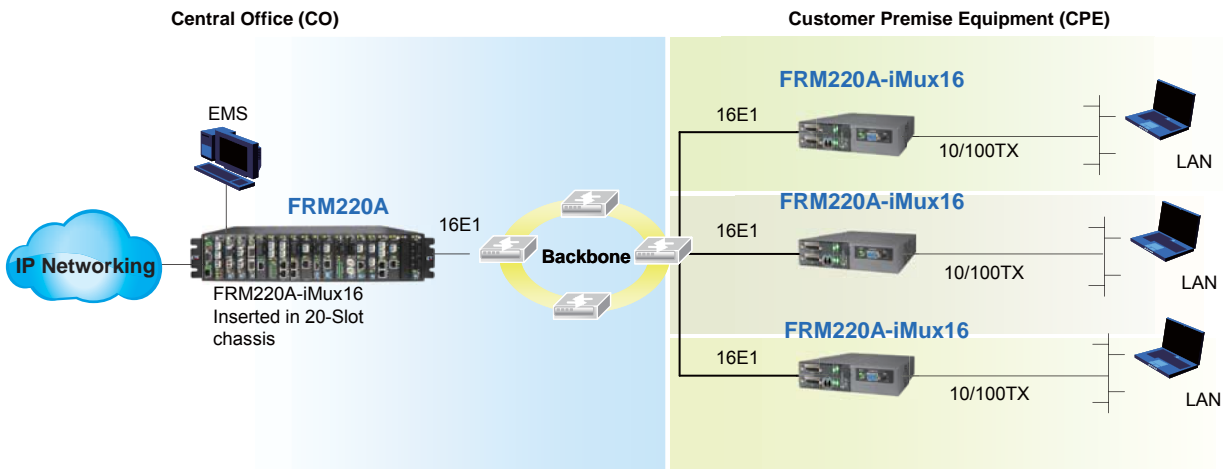
16E1 Inverse Multiplexer FRM220A-iMux16

The FRM220A-iMux16 is an E1 inverse multiplexer capable of bundling up to 16 E1 lines for cost-effective connection of 10/100BaseTX or 100Base-FX LANs over multiple E1 transports. The FRM220A-iMux16 inverse multiplexer transmits up to a 31.74Mbps Ethernet bridge channel (GFP-F encapsulated) over 16 E1 links. The FRM220A-iMux16 bridges the gap between E1 and E3, allowing bridges to operate at faster rates. It also provides high speed access to SDH/SONET backbones where the only access services available are E1 lines. The FRM220A-iMux16 supports an E1 attenuation of up to 43 dB on twisted pair or coax cable. This provides an approximate operating range up to 2km (using 22AWG). The FRM220A-iMux16 fully meets E1 specifications including ITU-T G.703 and G.823. The FRM220A-iMux16 features diagnostic capabilities for performing remote loopback. The operator at either end of the line may test both the FRM220A-iMux16 and the line in the digital loopback mode. The Ethernet copper interface supports auto-negotiation and auto MDI/MDIX, allowing plug-and-play Ethernet connection without any additional configuration.

Features

- Connects one Fast Ethernet over 16E1 links (1.984Mbps to 31.74Mbps)
- Built-in GFP bridge operates at WAN rate
- Auto-Negotiation
- Maximum 220ms delay variance between E1 link
- Unbalanced E1/BNC or balanced E1/RJ45
- Fully compatible with FRM220A chassis
- SNMP management with FRM220A chassis
- LED Alarm indication

| | | |
|----------------|---|---|
| Interface | Framing | CCS+CRC |
| | Standard | ITU-T G.703/G.704/G.706 & G.732, G.823 |
| | Bit rate | 2.048Mbps± 50ppm (up to 16E1) |
| | Line code | HDB3 |
| | Clock setting | Internal OSC or recovery clock |
| | Receive level | -43dB |
| | Line impedance | 75 ohm (BNC) / 120 ohm (RJ45) |
| | Jitter Performance | Complies with ITU-T G.823 |
| | Pulse Mask | Complies with ITU-T G.703 |
| | Pulse amplitude | Nominal 2.37V ± 10% |
| | Delay Variance | 220ms |
| | Connector | RJ45, BNC |
| | Diagnostics | Digital remote loopback |
| Standard | IEEE 802.3, 802.3u | |
| Data rate | 10/100Base-TX, Half/Full duplex 100Base-FX | |
| Connector | RJ45 10/100Base-TX SFP-LC 100Base-FX | |
| Indications | Power, ALM, E1 signal loss , E1 Alarm (AIS · LOF · RAI, LOMF), LAN link /ACT, 10/100M , SD(100Base-FX) | |
| | Power Input | AC adapter : 100~240VAC to 12VDC AC 100 ~ 240V, DC -18 ~ 75V |
| | Power Consumption | < 12W |
| | Dimensions | DC12 : 160 x 88 x 24 (D x W x H)mm AC/DC48/AD : 201 x 135 x 35 (D x W x H)mm |
| Weight | DC 12 : 280g , AC/DC48/AD : 580g | |
| Temperature | 0 ~ 60°C (Operating), -10 ~ 70°C (Storage) | |
| Humidity | 10 ~ 90% RH (non-condensing) | |
| Certifications | CE, FCC, RoHS | |
| MTBF | 65,000 hrs (25°C) | |



Ordering Information

FRM220A-iMux16 ¹□ - ²□ / ³□□□□

1 T : 10/100TX 2 R : 120 ohm(RJ-45) 3 AC
S : 100FX B : 75 ohm(BNC) DC48
AD

Smart View Element Management System (EMS)

Example: SV-PLF-05(5/ 25/ 50), SV-AGT-50(50/ 100/ 200/ 500), SV-Fiber
(Platform server: 5/ 25/ 50 Client user admission+
50/ 100/ 200/ 500 Device Agents + FRM220 Managed Module)