

## 3-Port 10/100Base-TX + 100Base FX Managed Switch

# FRM220A-FSW103



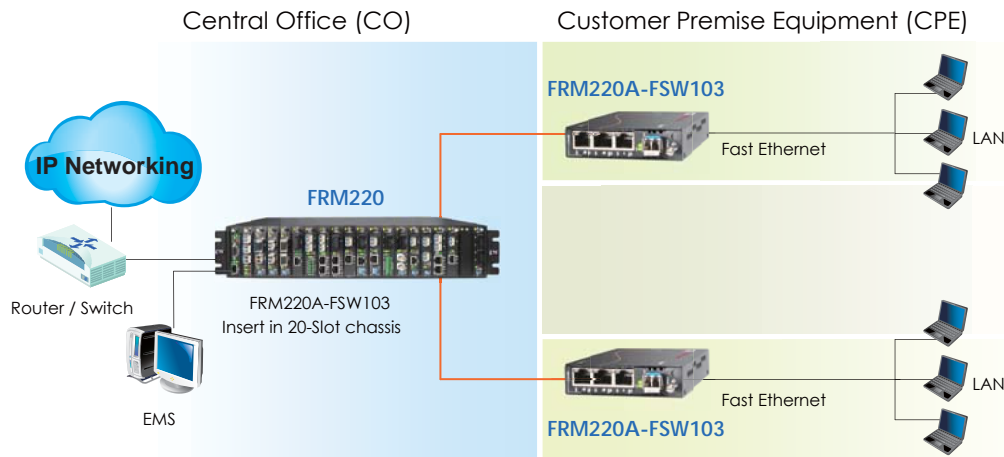
The FRM220A-FSW103 is a 3-port 10/100Base-TX to 100Base-FX SFP fiber slide-in card Ethernet switch designed for central and remote applications. With SNMP and Web-based management in the FRM220 or FRM220A chassis, the network administrator can monitor, configure and control the activity of each FRM220A-FSW103 switch card locally via the SNMP manager. This switch can be completely controlled and monitored from a centrally located managed rack controlling all switch settings including duplex and speed configuration. This switch is completely transparent to Layer 2 and Layer 3 protocols including IEEE 802.1q, VLAN tag, Q in Q, STP, IPX, IP, etc

### Features

- 3 Port 10/100BASE-TX + 1 Port 100BASE-FX Ethernet Switch
- Auto-Cross over for MDI/MDIX in TP port
- Auto-Negotiation or Manual mode in TP port
- Support flow control
- Forward 1552 bytes (max.) packets in switch mode
- Support Store and forward switch mode
- Support FRM220 chassis management system
- Support FRM220A chassis management System and Ethernet Aggregation
- Support the local management (Monitor or Configure status) by the SNMP manager.
- Support D/D function for SFP fiber transceiver
- Provide Auto Laser Shutdown (ALS) function
- Provide Product information for management
- Support On-Line F/W upgrade (local) by the SNMP manager

### Specifications

<b>Optical Interface</b>	Connector	SFP LC
	Data rate	100Mbps
	Duplex mode	Full duplex
	Fiber	MM 50/125µm, 62.5/125µm. SM 9/125µm
Distance	MM	2km, 15/30/50/80/120km, WDM 20/40/60/80km
	SM	15/30/50/80/120km, WDM 20/40/60/80km
Wavelength	MM	1310nm, 1550nm
	WDM	1310Tx/1550Rx (type A) 1550Tx/1310Rx (type B)
<b>Electrical Interface</b>	Connector	RJ45
	Data rate	10Mbps, 100Mbps
	Duplex mode	Half / Full duplex
	Cable	10Base-T Cat.3, 4, 5, UTP, 100Base-TX Cat.5, 5e or higher
Standard	IEEE 802.3, IEEE 802.3u	
Indications	LED (Power, FEF, FX-Link, TX-SPD, TX-Duplex, TX-Link)	
Power Input	Card	: 12VDC
	Standalone	: AC, DC options
Power Consumption	< 4W	
Dimension	155 x 88 x 23mm (D x W x H)	
Weight	0.12kg	
Temperature	0 ~ 80°C (Operating), 0 ~ 80°C (Storage)	
Humidity	5 ~ 90% non-condensing	
Certification	CE, FCC, LVD, RoHS	
MTBF	65,000 hrs	



### Ordering Information

Model Name	Description
FRM220A-FSW103	3 x 10/100Base-TX to 100Base-FX Switch, (optional SFP)

Note: The card is suitable for using in CH01 standalone chassis.