

E1 CSU/DSU Family

Managed E1 Access Unit



ETU01A

The ETU01A single port stand-alone DSU/CSU provides our best digital access solution for E1 and Fractional E1 network services termination. A DTE device may be linked to an ETU01A at data rates of 56Kbps to 2048Kbps. The ETU01A features user replaceable dataport modules for a number of interface standards; including Ethernet bridge, router, V.35, X.21, RS-530, RS-449, G.703 64Kbps Co-directional and RS-232. The ETU01A supports local control and diagnostics via LCD display, keypad and LED status indicators located on the front panel as well as via a menu driven RS-232 console port in conjunction with a standard terminal. These features enable users to easily configure the unit, execute the in-service diagnostics and monitor the network status. The ETU01A provides optional SNMP (Simple Network Management Protocol), which allows the user to remotely control, diagnose and monitor the system using industry standard SNMP protocol, our proprietary MIB-II, and any network management software.

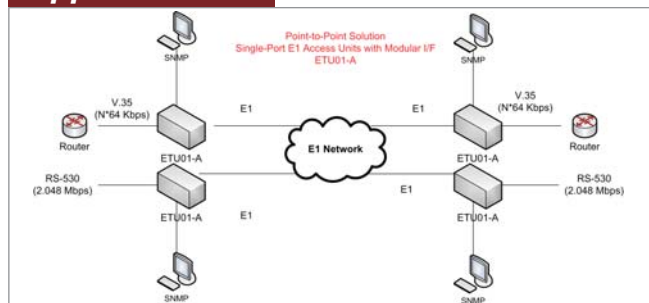
Features

- Supports Fractional E1 and Unframed E1 service with EOC control
- Removable interfaces, support V35, X21, RS530, RS449, RS232, G.703 Co-directional, NRZ, Ethernet Bridge and Router
- I/O connectors on rear panel
- Multiple clock source selection (Internal or External: E1 recovery, DTE or DCE)
- Supports Console, Telnet and SNMP management
- Menu keys and LCD display
- Supported by EMS
- Built-in BERT with V.54 diagnostic capabilities for performing local and remote loopback

Specifications

Ports	Framing : Framed CCS (PCM31) CAS (PCM30) / Unframed
G.703 E1 Specifications	CRC4 on/off
	Line Code : AMI/ HDB3
	LCD display : 16*2 character LCD with backlight
	Bit rate: N*56K or N*64Kbps, where N=1-31 in CCS or 1-30 in CAS
	Relative receive level : 0 to -43dB
	Transmit level : Pulse Nominal 2.37V ±10% for 75ohm Amplitude Nominal 3.00V ±10% for 120ohm Zero amplitude ±0.1V
	Jitter performance : According to ITU-T G.823
	Connectors : BNC(unbalanced), RJ-48(balanced)
	Clock modes : Clock mode 0 Receive & transmit clock (DCE1) (recovered) to the sync. DTE Clock mode 1 Receive & transmit clock (DCE2) (internal oscillator) to the sync. DTE Clock mode 2 Receive clock to the sync. and transmit (DTE1) clock from the sync. device Clock mode 3 Receive and transmit clock from the (DTE2) sync. DCE (from ETC and ERC pin) Clock mode 4 Receive and transmit clock from the (DTE3) sync. DCE (all from ETC pin)
	Diagnostics : loopback, Digital remote loopback, Test pattern
LEDs	Power, TD, RD, RTS, DCD, Singal loss, Sync loss, Alarm
Standard	ITU-T G.703/G.704/G.706 & G.732
Power	AC: 90-250VAC ; DC: 18-72 VCD
Power Consumption	10W
Dimensions	250mm x 195mm x 45mm
(D x W x H)mm	
Weight	1.5kg
Temperature	0-50°C (Operating) ,0-70°C (Storage)
Humidity	10-90% non-condensing
Certification	CE, FCC, LVD, RoHS
MTBF	65,000 h (25°C)

Application



Ordering Information

- **ETU01A-AC** Data port to framed E1 w/ AC power (90 ~ 250 VAC)
- **ETU01A-DC24** Data port to framed E1 w/ DC -24V (-18 ~ -36 VDC)
- **ETU01A-DC48** Data port to framed E1 w/ DC -48V (-36 ~ -72 VDC)
- **ETU01A-AD24** Data port to framed E1 w/ DC -24V (-18 ~ -36 VDC) & AC power (90 ~ 250 VAC)
- **ETU01A-AD48** Data port to framed E1 w/ DC -48V (-36 ~ -72 VDC) & AC power (90 ~ 250 VAC)

Optional Interface Modules



ETU/TTU-530
RS530 interface module



ETU/TTU-V35
V.35 interface module



ETU/TTU-X21
X.21 interface module



ETU/TTU-NRZ
NRZ interface module (4 * BNC)



ETU/TTU-449
RS449 interface module



ETU/TTU-232
RS232 ASYN/SYNC interface module



ETU/TTU-ET100R
10/100 Base-T/Tx Ethernet Routing Function interface module



ETU/TTU-ET100
10/100Base-T/Tx Ethernet E1 Bridge Function interface module



ETU/TTU-G64
G.703 64Kbps co-directional interface module