



FOM10-MUX

16E1/T1 + 4x GbE, RJ45 Fiber Managed Multiplexer
(Order Wire optional)

The FOM10-MUX is 1U 19" rack mountable, PDH fiber optical Multiplexer that transmits up to 16 E1/T1 + 4 x 10/100/1000Base-T Gigabit Ethernet over a single fiber optic link. The FOM10-MUX chassis is available in AC+DC power configuration. The AC supplies operate from 90 ~ 240VAC while DC supplies operate from 18~72VDC. On the rear of the chassis, the BNC model provides 32/16 unbalanced 75 Ohm coaxial connections with BNC connectors while the RJ-45 model provides 16/8 balanced 120 Ohm connections over twisted pair wiring with RJ45 connectors. With two SFP sockets on fiber ports, the FOM10-MUX gives you the fiber cabling connector SFP-LC, both multi-mode and single-mode are available as well as BiDi which allows bi-directional transmissions using only a single fiber cable. 1+1 Automatic optical line protection is also supported for the aggregate fiber ports. The standard FOM10-MUX configuration may be viewed or set via serial VT-100 terminal connection or SNMP card with web, telnet, and SNMP management

Features

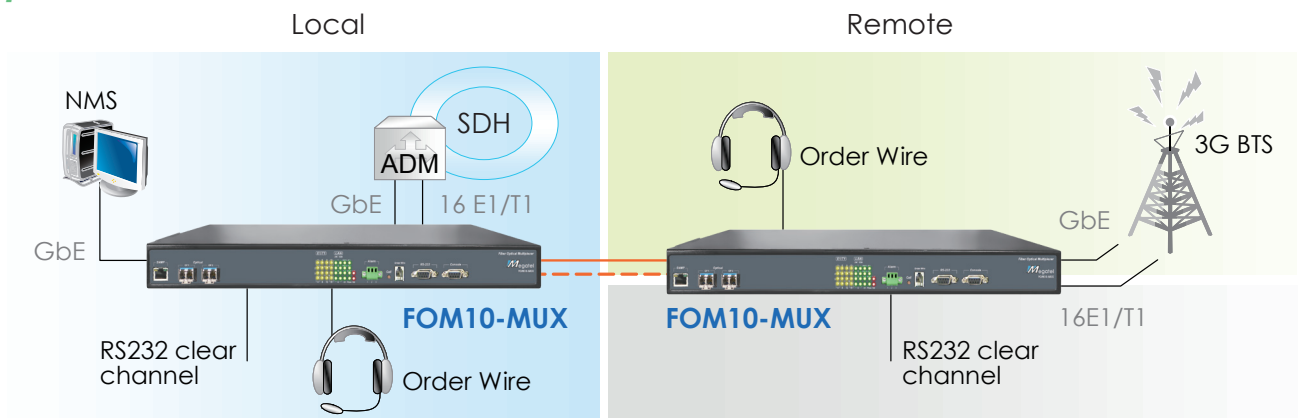
- Provides 16 E1/T1 G.703 transparent transmission over fiber
- Provide 4 x 10/100/1000 Mbit/s Ethernet Ports
- Provides one RS232 channel
- Loopback test on E1/T1 fiber port
- Provides one hotline channel (order-wire)
- Supports full/half duplex, 10M/100M/1000M, auto-Negotiation
- Forward 10K byte jumbo packets on Ethernet port
- Supports 1+1 fiber line protection. Less than 50ms
- Complete alarm function and can monitor remote device status
- Power combination AC220V and DC-48V for redundant options
- Supports RS232 local management ; Supports on-line f/w upgrade
- Supports Web, Telnet, SNMP management

Specifications

Optical Interface	Connector	SFP-LC
	Data rate	1.25Gbps
	Bit Error Rate	Less than 10 ⁻¹¹
	Distance	MM 2km, SM 15/30/50/80/120km
	Wavelength	WDM 20/40/60/80km
Electrical Interface	Connector	Console : RS232 / SNMP : RJ45 Ethernet : RJ45 (4-port)
	Alarm	RS232 / Order wire : RJ11
E1 Interface	Standards	ITU-T G.703, G.704, G.706, G.732
	Ports	16 ports
	Data Rate	2.048 Mbps ± 50 ppm
	Line Code	HDB3/AMI
	Connector	RJ-45 for 120 ohms BNC for 75 ohms Wire wrap for 120 ohm

T1 Interface	Standards	ITU-T G.703, G.704, AT&T TR-62411, ANSI T1.403
	Ports	16 ports
	Data Rate	1.544 Mbps ±50 ppm
	Line Code	B8ZS / AMI
Connector	RJ-45 for 100 ohms Wire wrap for 100 ohms	
Certification	CE, FCC, RoHS compliant	
Standards	ITU-T G.703, G.823 and G.742, ANSI, AT&T, IEEE803.2, IEEE802.3u, IEEE802.3ab	
Indications	Power, Alarm, LBK, RD, LCK, RNG, ACO, Port, channel	
Power Input	100 ~ 240VAC, 20~60VDC, 36~72VDC	
Power Consumption	<25W	
Dimensions	250 x 438 x 43mm (D x W x H)	
Weight	3.58kg	
Temperature	0 ~ 60°C (Operating), -10 ~ 70°C (Storage)	
MTBF	50,000 hrs	

Application

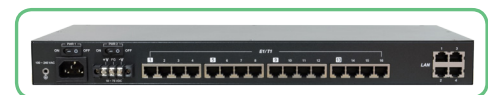


Ordering Information

Model Name	Description
FOM10-MUX-E1B-AD-SNMP	16E1 BNC + 4x10/100/1000T Ethernet Fiber Multiplexer, built-in AC+DC power, SNMP Card with 10/100Base-TX Ethernet Port
FOM10-MUX-ETR-AD-SNMP	16E1/T1 RJ45 + 4x10/100/1000T Ethernet Fiber Multiplexer, built-in AC+DC power, SNMP Card with 10/100Base-TX Ethernet Port
Optional Voice Card	
FOM10-Phone-2W	2 Wires Order Wire
FOM10-Phone-4W	4 Wires Order Wire



BNC TYPE



RJ45 TYPE