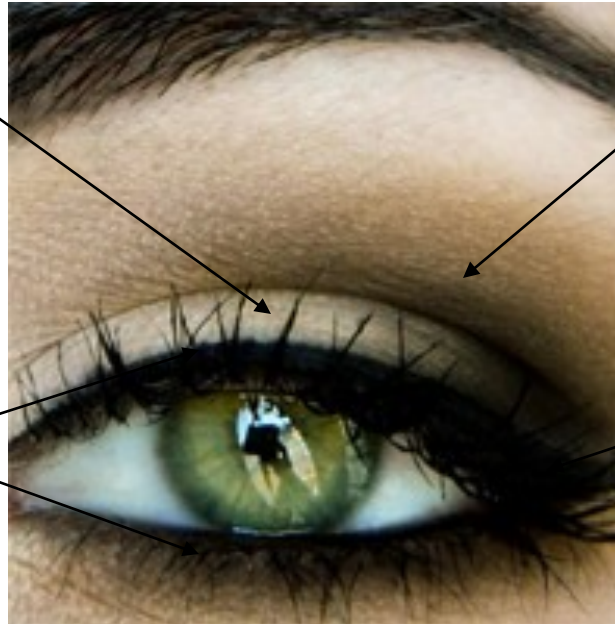


DIRECTIONS TO APPLY TRIO COMPACT WITH EYELINER

Your eye shadow trio compact was designed to compliment your eye color. Bringing out the colors in your eyes makes them appear larger. For a complete makeup application, begin with any eye shadow base color and crease color you already own. Then proceed with the directions below.

1. Using a fluff brush, apply the lightest shadow to $\frac{3}{4}$ of your eyelid. Start from the outside and work inward.

3. Apply the jumbo eyeliner pencil to $\frac{3}{4}$ of the top and bottom eyelid. Apply from the outside and work inward.



2. Using a fluff brush, apply the medium shade eye shadow color to your crease. Start at the outer corner of your crease and move the brush back and forth across your crease. Work from the outside inward. Cover no more than $\frac{3}{4}$ of your crease.

4. Using a fluff brush, apply the darkest eye shadow to the outer corner of your eye in a sideways "V" shape. Keep the color close to the outer corner of your eye and don't extend it more than $\frac{1}{2}$ of the way into your eye. For a smoky look, apply a little of the darkest color over your crease color and over your top and bottom eyeliner pencil.