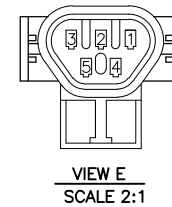


- NOTES:
- 1.CCW
 - 2.TURNS IS 28 PER PHASE
 - 3.Front bearing: NTN6006 LLUC3/5K (Made in Japan)
 - 4.Product to be shipped in plain white box, styrofoam packaging
Include Dyno Plot in box.
 - 5.Box to be marked: Part Number: ME0913
Made in China

NAMECARD DATA
 PART # ME0913
 DATE CODE XXXXXX
 SERIAL #:XX.XX.XXXX
 Motenergy, Inc.
 Slinger, WI USA



| PIN LOCATION 插孔点 | WIRE DESIGNATION 导线标记 | WIRE COLOR 导线颜色 | REMARKS 注意 |
|---------------------|--------------------------|--------------------|-------------------------|
| 1 | S1 (U1) | WHITE 白 | --- |
| 2 | S2 (U2) | GREEN 绿 | --- |
| 3 | S3 (U3) | BLUE 蓝 | --- |
| 4 | GND (0) | BLACK 黑 | SHIELD TIED TO THIS PIN |
| 5 | V _{no} (+12) | RED 红 | --- |

| REV. | CHANGES | BY | ECO NO. | DATE | DO NOT SCALE DRAWING THIS DRAWING IS PROPRIETARY PROPERTY OF MOTENERGY, INC. DISCLOSED IN CONFIDENCE, WHICH MAY NOT BE USED OR DISCLOSED WITHOUT PERMISSION. RETURN PROMPTLY AFTER USE. | DIMENSIONING AND TOLERANCING PER ANSI Y14.5M-1994 | MATERIAL | TITLE | Motenergy, Inc. SLINGER, WISCONSIN, U.S.A. |
|------|---------|----|---------|------|--|---|----------|---------------------|---|
| - | - | - | - | - | - | - | - | OUTLINE | - |
| - | - | - | - | - | - | - | - | DRAWN: lxp 09.12.17 | - |
| - | - | - | - | - | - | - | - | APPR: JAF 11:04:08 | DESIGN VENDOR: - |
| - | - | - | - | - | - | - | - | DEPT: - | ME0913 |
| - | - | - | - | - | - | - | - | SCALE: - | REV SHEET - 1 OF 1 |