



Public Safety & Security

Strobe Mounting Bracket



**Strobe Mounting
Bracket**



Back Box Adaptor



Hardware



Pole Mounting Bracket

Includes

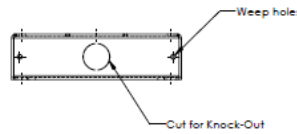
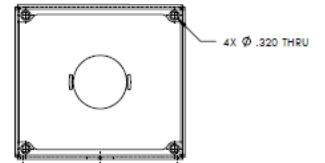
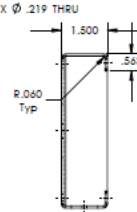
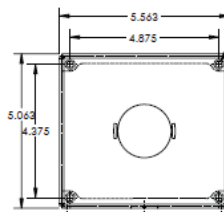
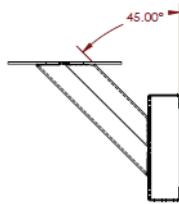
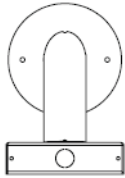
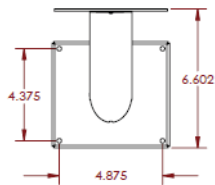
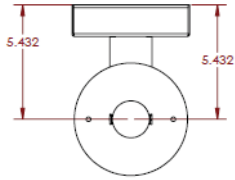
- Strobe mounting bracket (mild steel)
 - 1 or 2 gang back box adaptor mounting plate
 - 16 gauge pole mount adaptor plate
- (Strobe sold separately)*

Specifications

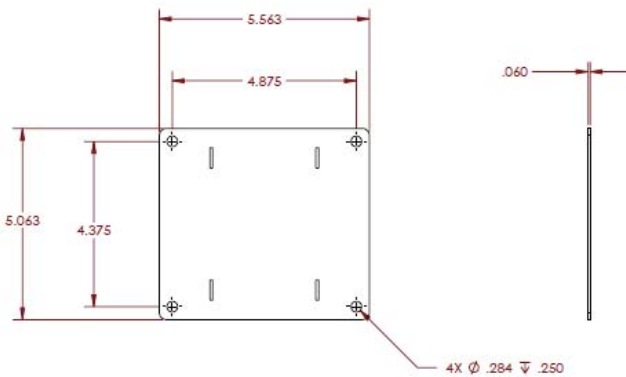
- 16 gauge steel
- E-coated (Gray Wrinkle)
- 5 lb. overall weight



Strobe Mounting Bracket



Pole Mounting Adaptor



Back Box Mounting Adaptor (1 or 2 gang)

