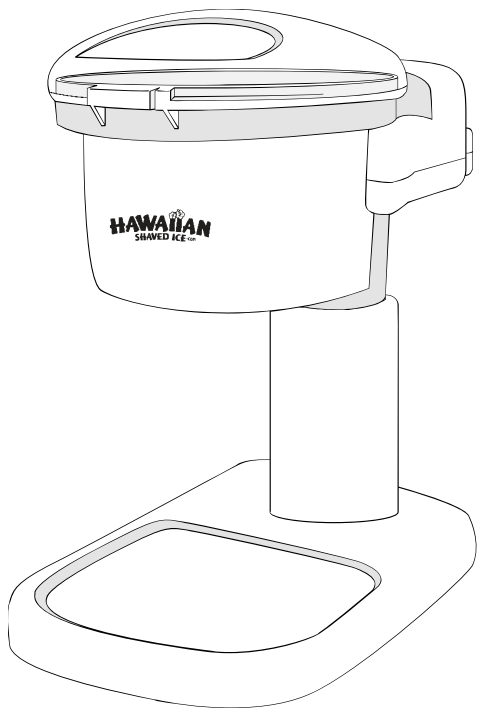


HAWAIIAN **SHAVED ICE**

Electric Snow Cone Machine

Model #S700

Instruction Manual



SAVE THIS MANUAL FOR FUTURE USE

Registration

You may register this ice shaver through our website at
www.HawaiianShavedIce.com/register.html

Table of Contents

General Warnings	3
Usage Precautions	7
Warranty	9
Assembly/Parts Diagram for S700 (Fig. A)	11
Operation for S700 (Fig. B)	12
Assembly and Use	13
Cleaning	14
Shaved Ice Recipes	15

Mary Mack's, Inc. **DBA Hawaiian Shaved Ice**

321 Goldsboro Street
Newton Grove, NC 28366, USA
1-800-742-8334 – toll free
910-247-4152 – direct
770-234-6333 – fax

General Warnings and Safeguards



CAUTION

To prevent property damage and personal injury, it is important that you read and follow all general warnings, safeguards and instructions.

- ⚠ Read the instructions provided in this booklet carefully because they give important information with regards to the installation, use and maintenance. Keep this manual for future reference.
- ⚠ This ice shaver is intended for household use only.
- ⚠ **This ice shaver has an extremely sharp blade. You should use extreme caution during assembly, operation, disassembly and while cleaning the unit. If the blade becomes broken or loose, do not use the appliance.**
- ⚠ After unpacking the unit and before each use, make sure the mechanical parts of the unit and all its attachments are intact. Look for any foreign objects before operating the ice shaver. When in doubt, do not use the appliance and refer to an authorized repair center.
- ⚠ To prevent electrical shock to yourself or others, do not immerse the cord, plugs, motor unit or any other electrical parts in water or other liquids of any kind.
- ⚠ Use extreme caution to make sure you never place your fingers or other items into the machine or the machine's moving parts.

- ⚠ Do not operate the machine without ice.
- ⚠ Use this appliance for no more than 2 continuous minutes. Failure to obey this may cause the ice shaver to overheat. Allow the appliance motor to cool down before repeat usage.
- ⚠ All packing elements (plastic bags, polystyrene, etc.) should be kept out of the reach of children because they are potentially hazardous.
- ⚠ Before plugging the appliance into a power source, make sure the voltage details marked on the appliance seal/plaque correspond to those of your power supply. The seal/plaque is located on the motor unit.
- ⚠ This appliance has a polarized plug (one blade is wider than the other). As a safety feature, this plug will fit a polarized outlet only one way. If the plug does not fit fully in the outlet, reverse the plug. If it still does not fit, contact a qualified electrician. Do not attempt to defeat this safety feature.
- ⚠ In the event the wall socket and the appliance plug are not compatible, have the socket changed by a qualified professional who must also ensure that the cross section of the socket wiring corresponds to the power consumed by the appliance. Generally speaking, adapters, multiple sockets, extension cords and/or drop cords should not be used. However, if necessary, only use single or multiple adapters and extension cables which comply with the existing safety standards, making sure the current carrying capacity limits marked on the single adapter and on the extension cables as well as the maximum power limit marked on the multiple adapter are not exceeded.
- ⚠ Do not use the machine around a hot surface or hot appliances. Keep the appliance away from stovetops, broilers, ovens or any other potentially hot appliance. Pay special attention to the electrical cord to prevent it from touching a hot surface.

- ⚠ This appliance must be used only for the purposes it was designed for, (i.e. for crushing/shaving ice in the home). Any other use must be considered improper and therefore dangerous. The manufacturer cannot be held responsible for any damages deriving from improper, incorrect or unreasonable uses.
- ⚠ The use of any additional accessory attachments not recommended by HawaiianShavedIce.com is not suggested. Failure to obey this warning may cause fire, electric shock or injury to yourself or others.
- ⚠ The use of any electric appliance requires the user to observe basic rules.

In Particular:

- ⚠ Never touch the appliance with wet or damp hands.
- ⚠ Never use the appliance barefoot.
- ⚠ Never pull the electrical cable or the appliance itself to remove the plug from the electrical socket.
- ⚠ Avoid all contact with any moving parts of the appliance.
- ⚠ Never leave the appliance exposed to the elements (rain, sunshine, etc.).
- ⚠ Never let children or those unable to operate the appliance use it unattended. Do not leave the unit unattended while plugged into a power source.
- ⚠ **Before any cleaning, maintenance, assembly or disassembly, make sure that the ice shaver is disconnected from the main power supply by unplugging it.**
- ⚠ Should the appliance be out of order and/or operating inefficiently switch it off and do not attempt to tamper with it. For any repairs, approach an authorized service center only and request the use of

original spare parts. Failure to comply with the above might result in compromised safety of the appliance.

- ⚠ Should you decide to stop using the appliance, it is advisable to render it unusable by cutting the electrical cable after unplugging it from the main power supply.
- ⚠ Furthermore, it is advisable to render all hazardous parts of the appliance harmless, particularly for children, who might play with the discarded appliance.
- ⚠ Installation must be carried out in compliance with the manufacturer's instructions. Incorrect installation can cause damage to people, animals or objects for whom the manufacturer may not be held responsible.
- ⚠ In order to avoid dangerous overheating it is advisable to unwind the electrical cable completely and use the appliance as recommended in the "Usage Precautions" paragraph.
- ⚠ Never leave the appliance plugged in when not needed. Unplug from the power supply plug whenever the appliance is not in use.
- ⚠ Never obstruct the openings or slits for ventilation and heat dissipation.
- ⚠ Should the electrical cable of this appliance become damaged, have it replaced by a manufacturer authorized after-sales service center only because special tools are required.
- ⚠ The manufacturer reserves the right to make any changes considered necessary for industrial, commercial or design improvements or to comply with particular standards. It is advisable to pay particular attention to those warnings highlighted with the ⚠ symbol.

Usage Precautions

- Before using this appliance for the first time or after a long period of disuse, wash the shaver bowl assembly cup in warm water with dish soap, rinse and dry thoroughly.
- Before each use of the appliance, check that it is mechanically intact. The motor unit, the shaver bowl assembly and the support base must not be cracked or broken in any way. The sheath and the plug should not be cracked or broken. However if they are, remove the plug immediately from the socket and take the appliance to an authorized technical center for necessary repairs.
- Before plugging in the appliance, check that the switch is not in the “On” position.
- Ensure that the ice shaver and the cable are not too close to the edge of the table or work surface, that it is not touching heat sources, and that it is not near a sink.
- Never immerse the motor unit in water or other liquids.
- Use ice cubes that are made from most residential ice makers. Commercially produced bagged ice may be used as long as the cubes are not too big.
- Substances other than ice should never be placed in the container shaver bowl assembly.
- Never run the appliance while empty.
- Never run the appliance before it has been correctly mounted on its base.
- Never put your fingers into the bowl assembly because the blade is very sharp and may cause injury.
- Do not damage the blade by using metal implements.

- Do not attempt to sharpen the blades; if necessary, replacement blades may be purchased. See page 17 of this instruction manual for ordering information.
- To avoid overheating, do not run the appliance for longer than 2 consecutive minutes. If you need to crush a large quantity of ice, do so in small batches with pauses in between.

Ice Shaver Specifications

Model S700, Electric Ice Shaver – Snow Cone Machine

Power: 120v, 60 Hz, 55W max

ETL approval

Made in China

Product Warranty

Ice Shaver 1 Year Limited Warranty

Mary Mack's, Inc. DBA HawaiianShavedIce.com warrants to the original purchaser that the Hawaiian Snow Cone Machine (Ice Shaver) # S700 shall be free from material defects in material and workmanship under normal household use for a period of one (1) year from the original date of purchase provided that the ice shaver and all parts thereof are used in accordance with all of the general warnings, safeguards and instructions found in this instruction manual.

If the product is determined to be materially defective during the warranty period, your sole remedy and Mary Mack's, Inc. sole and exclusive liability shall be limited to the repair or replacement of this product with a new or refurbished product at Mary Mack's, Inc. option. This warranty does not cover exterior or interior finish or damage caused by misuse, scratching, accident or negligence.

This warranty is extended only to the original purchaser and does not apply to commercial use or damage to the product (not resulting from defect or malfunction) while in the possession of the original consumer. Mary Mack's, Inc. claims no responsibility for consequential, foreseeable, incidental, or commercial losses caused as a result of using this product.

If a problem with this ice shaver develops during the warranty period, please contact Mary Mack's, Inc. for service. Send a brief letter explaining the problem along with a copy of your receipt or other proof of the original purchase date, which will be required before warranty service is rendered. Be sure to include your name, address and phone number.

Any ice shaver submitted for repair must be sent (transportation charges prepaid) to the following authorized repair center:

Mary Mack's, Inc.
Attn: Ice Shaver Repair
321 Goldsboro Street
Newton Grove, NC 28366

If you have any questions concerning the use and/or care of this product or comments regarding your experience with the product, we would like to hear from you. Feel free to give us a call at 1-800-742-8334 or email us at CustomerCare@HawaiianShavedIce.com.

This warranty is valid in the United States of America and Canada only.

Figure A.

Assembly/Parts Diagram for S700

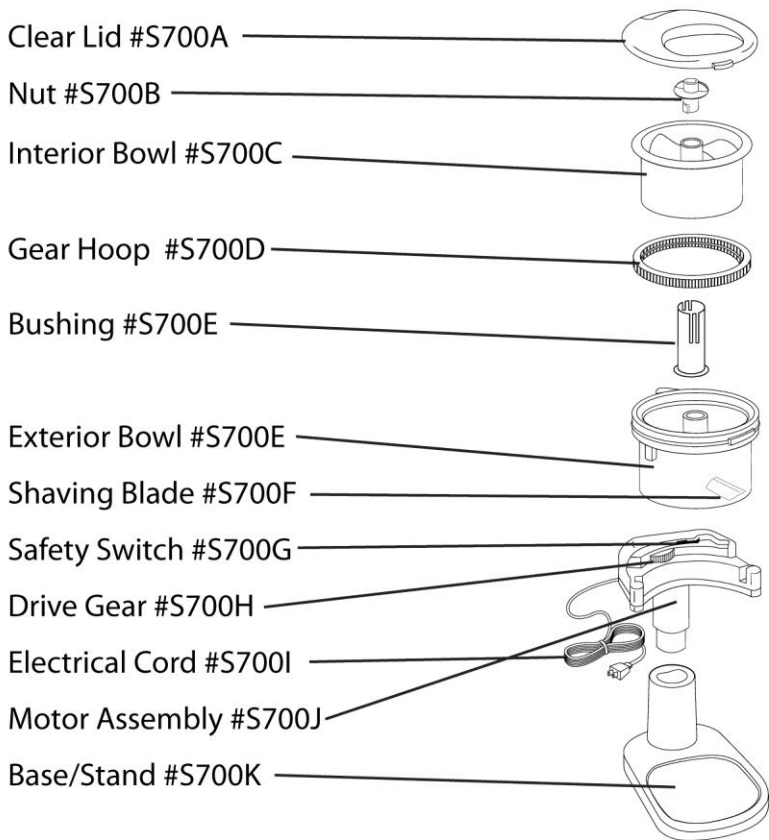
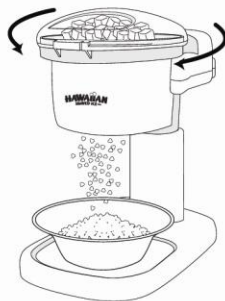


Figure B. Operation for S700



1.



2.



3.



4.

Assembly and Use

1. Always ensure that the appliance is switched off and that it is not plugged into an electrical outlet before you assemble or dismantle the ice shaver.
2. Refer to Fig. A, page 11 and Fig. B, page 12 for an assembly diagram, parts reference and operational diagram.
3. Place the machine base/stand (Fig. A, #S700K) on a flat sturdy counter or table.
4. Insert the drive gear (Fig. A, #S700H) into the base.
5. Align and insert the exterior bowl (Fig. A, #S700E) in drive gear.
6. Align and insert the gear hoop (Fig. A, #S700D) in the exterior bowl.
7. Align and insert the interior bowl (Fig. A, #S700C) in the exterior bowl. You may have to slowly spin the interior bowl to ensure that it fits correctly.
8. Secure the interior bowl to the exterior bowl using the securing nut (Fig. A, #S700B). Insert the nut in the center of the interior bowl and turn clockwise.
9. Place an empty bowl (not supplied) on the base of the unit just below the exterior bowl (Fig. B. 1.). This bowl will be used to collect the shaved ice.
10. Place fully frozen household ice cubes inside the interior bowl (Fig. B. 1.). Fill the bowl level with ice cubes. Most ice made from residential ice makers will work. Some commercially bagged ice may work as well. However, if your ice is too hard and has been in the freezer too long, you may need to allow the ice cubes to temper or thaw for a few minutes before shaving. Allowing the ice to temper, the machine will produce a fluffier snow, which is a common practice with commercial ice shavers as well.

11. Place clear lid (Fig. A, #S700A) on top of the interior bowl while lining up the lid's flange.
12. To shave ice, turn the lid counter clockwise (Fig. B. 2.) until the flange activates the safety switch (Fig. A, #S700G).
13. To stop shaving ice, turn the lid clockwise (Fig. B. 3.) to deactivate the safety switch.
14. Unplug the ice shaver from the power supply after each use.
15. Add premium syrup from HawaiianShavedIce.com (Fig. B. 4.) to the shaved ice and enjoy!

Cleaning

- Dismantle the appliance in reverse order of the procedure described for assembly.
- While cleaning, use caution and pay special attention to the ice shaver blade. Avoid all contact with the blade to prevent injury to yourself or others.
- Avoid using abrasive detergents or cloths.
- The motor unit may be cleaned with a slightly damp cloth but do not soak or immerse the motor unit in water or other liquid.
- All the machine parts other than the motor assembly (Fig. A) may be washed in warm water with mild soap and rinsed with water. Do not wash any of the parts or motor in a dishwasher.
- Dry all of the parts paying particular attention to the blade before putting the appliance away.

Have Fun with Shaved Ice Recipes

There is so much more that you can do with shaved ice than just simply shaving ice into a bowl and adding flavor. Try the great recipes below for fun and easy treats.

The Classic Shaved Ice – Shave a mountain of fluffy snow into a small bowl or ice cup. Add premium shaved ice flavor from HawaiianShavedIce.com and enjoy. The flavor will be absorbed into the ice. Remember that a little flavor goes a long way. You want to eat shaved ice with a spoon not with a straw!

Dipped Delight – Take a small bowl or ice cup and add a scoop of vanilla or your favorite flavor of ice cream to the bottom of the cup. Shave ice on top of the ice cream and top with your favorite syrup from HawaiianShavedIce.com. Enjoy the combination treat! A big seller at shaved ice stands all across the country!

Rainbow Shaved Ice – Shave a mountain of fluffy snow into a small bowl or ice cup. Take two or more flavors and pour them over the shaved ice to create a rainbow effect. Try mixing colors like yellow and blue to get a green stripe down the middle. Very popular!

Slush Drinks – Dilute one part shaved ice syrup to three parts water. Add the mixture over a tall cup of shaved ice. Pour just enough syrup mixture to cover the ice to keep it slushy. A great refreshing treat!

Soda Ice – Nothing helps make your favorite soda more refreshing than a tall cup of shaved ice. Pour your favorite soda over shaved ice and enjoy!

Fruit Ice – Instead of shaved ice syrup or soda, try natural fruit juices, lemonade or even tea over shaved ice. Serve these treats at your next party and it will be a hit!

Mixed Drinks – Instead of having your alcoholic drink on the rocks, try serving it over shaved ice. This also works well with margaritas, smoothies and other frozen drinks!

Shaved Ice Toppings

Sweetened Condensed Milk/Sweet Cream – This is the most popular topping used at shaved ice stands. Purchase a can of sweetened condensed milk from your local grocery store. Then simply pour a small amount of sweetened condensed milk over your flavored shaved ice treat and enjoy!

Evaporated Milk – If you want to give your shaved ice a creamy flavor, add a dose of evaporated milk over the top of your flavored shaved ice treat. Mix gently with a spoon and enjoy! This is especially great with Vanilla, Peach, Banana, Pina Colada and Coconut.

Marshmallow Topping – Add a dab to your next shaved ice treat to make it extra special.

Fresh Fruit – Try adding a fruit garnish to your shaved ice treat to make it tasty! Popular garnishes include cherries, pineapples, bananas, oranges, lemons and limes.

Other Uses for Shaved Ice – Use shaved ice to make an ice bed for serving shrimp, seafood or other cold items.

HAWAIIAN **SHAVED ICE**



Mary Mack's, Inc.
DBA Hawaiian Shaved Ice

321 Goldsboro Street
Newton Grove, NC 28366, USA
1-800-742-8334 – toll free
910-247-4152 – direct
770-234-6333 – fax