

STAMP PERFECT SS

BRACELET & PENDANT MARKING TOOL

Manufactured by Argon Tool, Inc.
Available online at www.steelstamps.com



Made
In
U.S.A.



See Demo on



VERY QUIET OPERATION
Use standard hand stamps



STAMP PERFECT SS RING MARKING TOOL
shown above sold separately

BRACELET AND PENDANT MARKING TOOL

The **BRACELET AND PENDANT MARKING TOOL** was designed to be used with the STAMP PERFECT RING MARKING TOOL and perform a dual purpose. One side of the tool enables the machine to stamp letters, numbers or symbols on a perfect radius around a disk or washer. The other side of the tool will allow the machine to mark in a straight line.

The tool replaces the standard ring marking arbor that comes with the Stamp Perfect Ring Marking machine. Simply remove (unscrew) the standard arbor and screw the bracelet and pendant marking tool block in its place.

The "V" notch side of the tool block is used to hold, position and center your round disk or washer jewelry. You need only adjust the blocks height by screwing the tool post up or down to the desired stamping position.

The flat ledge side of the tool block is used to hold, position and center your bracelet and name plate jewelry pieces. You need only adjust the blocks height by screwing the tool post up or down to the desired stamping position.

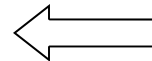
Mark Disks and Washers



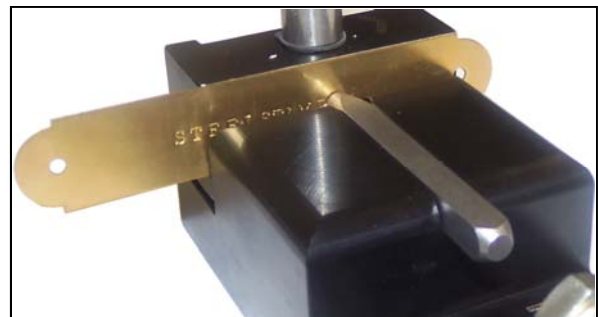
Rotate piece to next marking position



Mark Bracelets and Nameplates



Slide piece to next marking position



STAMP PERFECT SS

BRACELET AND PENDANT MARKING TOOL

Manufactured by Argon Tool, Inc.
Available online at www.steelstamps.com

See Demo on



Machine Set-Up and Marking instructions.



Photo #1

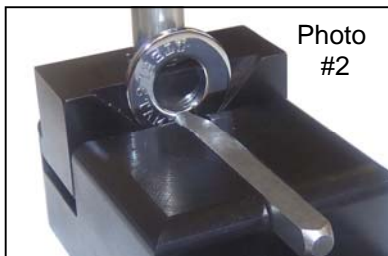


Photo #2



Photo #3



Photo #4



Photo #5

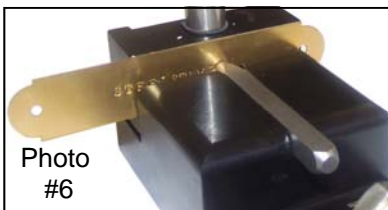


Photo #6

To mark disks or washers:

1. Remove (unscrew) the standard ring marking arbor that comes with the STAMP PERFECT RING MARKING MACHINE, and screw the bracelet and pendant marking tool block in its place with the "V" notch facing toward the handle. See Photo #1
2. Place your disk or washer in the "V" groove rest. Hint, hand lotion on the "V" groove face can help hold the washer in place.
3. Place your hand stamp in the machined groove with its engraved character toward your jewelry piece. Slide the hand stamp character face against the surface to mark. See photo #2
4. The adjusting screw allows you to move the "V" block up or down to the desired marking position on the face of your piece. See photo #3. Optional "Point" stamps provide a pin point reference to center your hand stamp characters.
5. With the toggle lever handle up, screw the toggle mechanism ram screw into the ram rod to a point that it will not touch the hammer end of your hand stamp when the toggle lever is fully pushed down. See photo #4
6. Push the toggle lever down so the ram is fully forward. Adjust the ram screw out until it's head makes contact with the hand stamp hammer end and pushes the hand stamp face against your piece to a point that you can no longer extend the screw further by finger pressure.
7. Lift the toggle lever handle up perpendicular to the machine, then turn the toggle mechanism ram screw 1 to 1-1/4 turns out further. Normally this will provide the proper screw length necessary to apply enough pressure to indent your stamp character into the ring.
8. Hold the screw head so it does not rotate and tighten the retaining nut against the rod end to lock the screw into position. Now you are ready to mark your ring. You may want to use a test piece for setting desirable marking pressure.
9. Push down firmly on the toggle lever until mechanism locks into place. When locked your stamp has made its mark. See photo #5
10. To release mechanism from its locked position, simultaneously pull up on the lever with both hands while your thumbs push against the toggle mechanism ram.
11. Place the next hand stamp into the machined groove, rotate disk or ring to the next marking position.
12. Repeat steps 9 thru 11 until you have completed marking your ring.

To mark bracelet and name plate jewelry pieces :

1. Screw the bracelet and pendant marking tool block in place with the flat ledge side facing toward the handle. See Photo #6
2. Set up of machine for marking is same as described above. Steps 4 thru 12
3. Simply slide your name plate or pendant to the next marking position like a type writer.