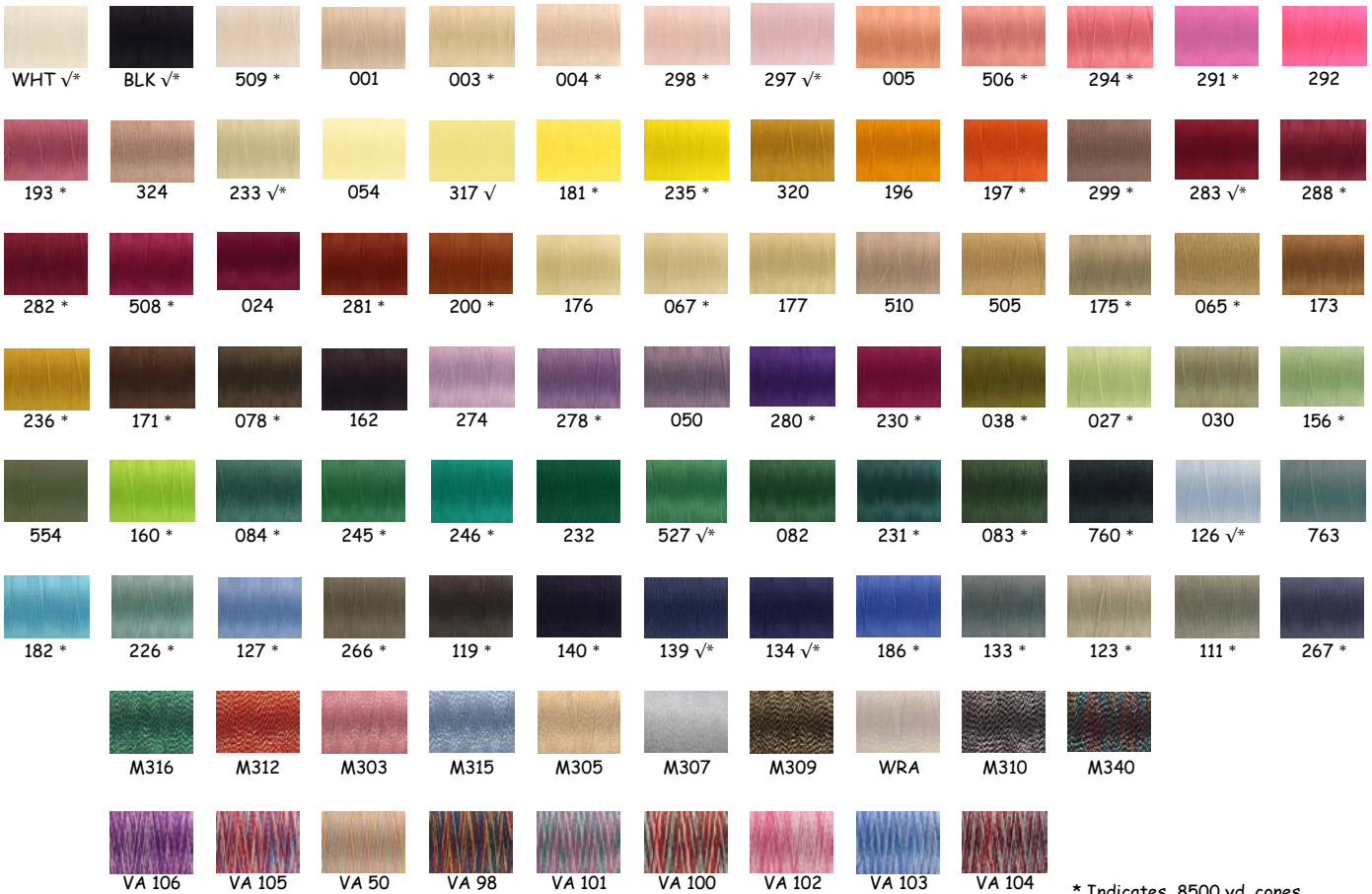


YLI Woolly Nylon®



Woolly Nylon® is a Textured 100% Nylon Serger thread of incredible strength, stretch and memory. It's soft enough to snuggle next to a baby's skin and full enough in its relaxed position to provide ideal coverage for seams and rolled edges. Use in the upper and/or lower looper of the serger.

Original Woolly 1000 m cones #213-01-color
 Woolly Nylon Extra 300 m cones #213-05-color
 Variegated Woolly Nylon 1000 m cones #213-VA-color
 Metallic Woolly Nylon 500 m cone #213-0M-color



* Indicates 8500 yd. cones
 ✓ Indicates Woolly Nylon Extra
 VA indicates Variegated Woolly
 "M" indicates Metallic Woolly



Unleash Your Imagination