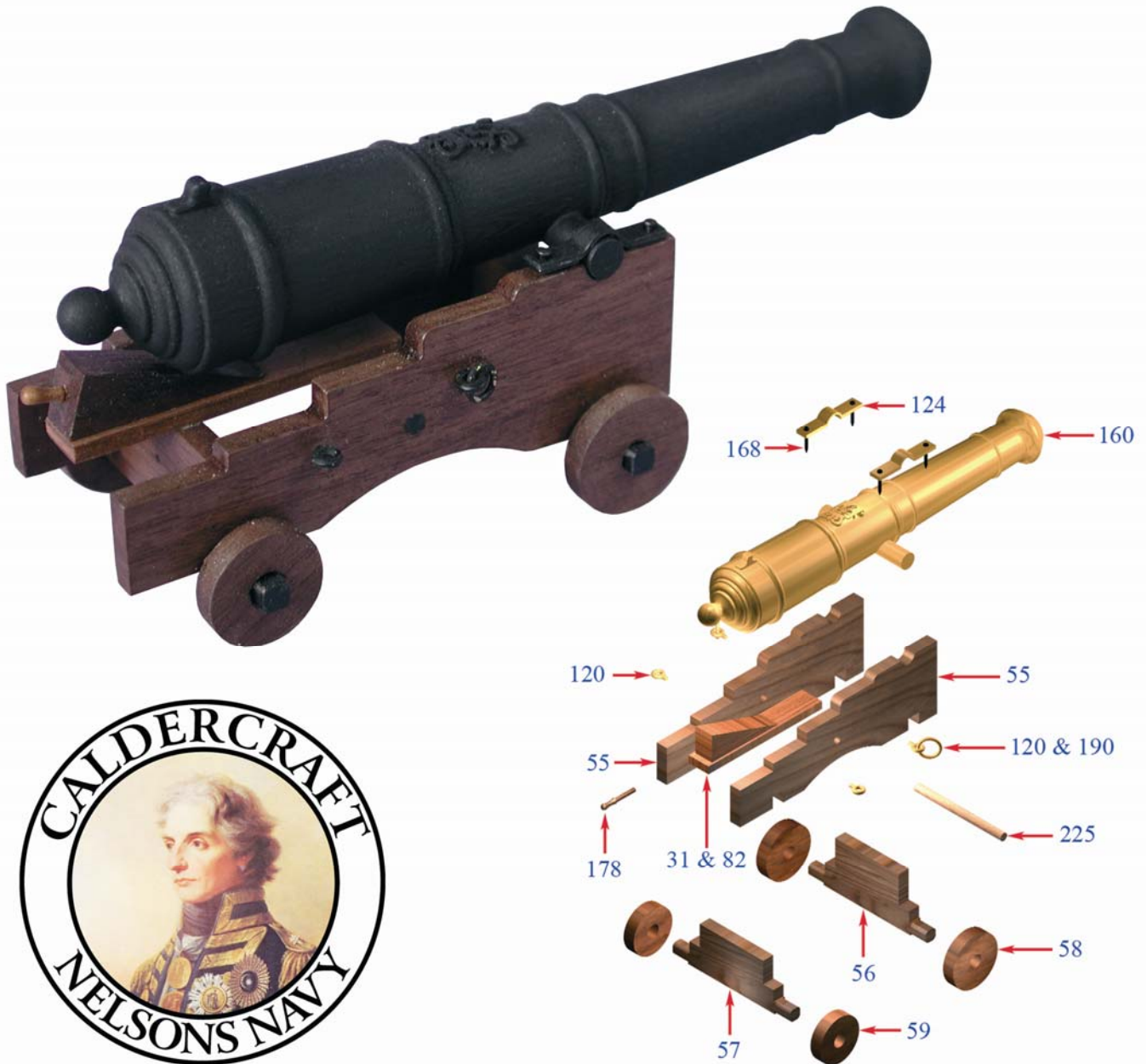


H.M. Gunboat William (1795)



Manual 2 of 2 Parts List & Part Identification

Additional photos of every stage of construction can be found on our website at:
<http://www.jotika-ltd.com>

Nelsons Navy Kits manufactured and distributed by JoTiKa Ltd.
Model Marine Warehouse, Hadzor, Droitwich, WR9 7DS.
Tel ~ +44 (0) 1905 776 073
Fax ~ +44 (0) 1905 776 712
Email ~ nelsonsnavy@jotika-ltd.com

Index

For easy reference, the parts list and part identification manual has been split into well-defined categories as follows:

Category	Part Number Range	Page(s)
5mm Ply	1 – 23	2 – 3
5mm Walnut	25 – 38	4
4mm Walnut	45 – 49	5
3mm Walnut	55 – 75	6
2mm Walnut	80 – 90	7
1.5mm Walnut	95 – 107	8
0.8mm Ply	110 – 116	9
Brass Etchings	120 – 145	10 – 11
White Metal Castings	150 – 157	12
Copper, Bronze, Brass & Plastic Fittings	160 – 171	12
Wooden Fittings & Blocks	175 – 185	12
Wire	190 – 192	12
Rigging Thread	195 – 206	13
Strip Wood	210 – 220	13
Birch Dowel	225 – 231	13
Nautical Terminology	n/a	14 – 15

Notes on Handling Components

During the build it will be necessary to sand down large areas, (after the first and second planking and at other stages) it is therefore advisable to work in a well ventilated area and / or wear appropriate protection. The same applies when using paints, stains, glues, fillers etc. Good lighting is also essential to the model maker.

The structural parts of the model are cut from high quality birch plywood, the remaining wood parts are cut from high quality walnut ply and walnut.

Take particular care when removing parts with a craft knife and ensure all parts are identified and marked with pencil before removal. Lay the sheet from which you are going to cut the parts on a rigid flat cutting board for removal. Use a heavy-duty craft knife with a good strong blade to cut through the tabs holding the parts in place. It will also be an advantage to paint the brass etched fittings prior to removal from the sheet; they can then be touched up again when in place. Alternatively when cutting brass or copper parts, a good pair of stout scissors will suffice.

Before each stage of construction, study both the manual and the plans until you are confident in the task ahead.

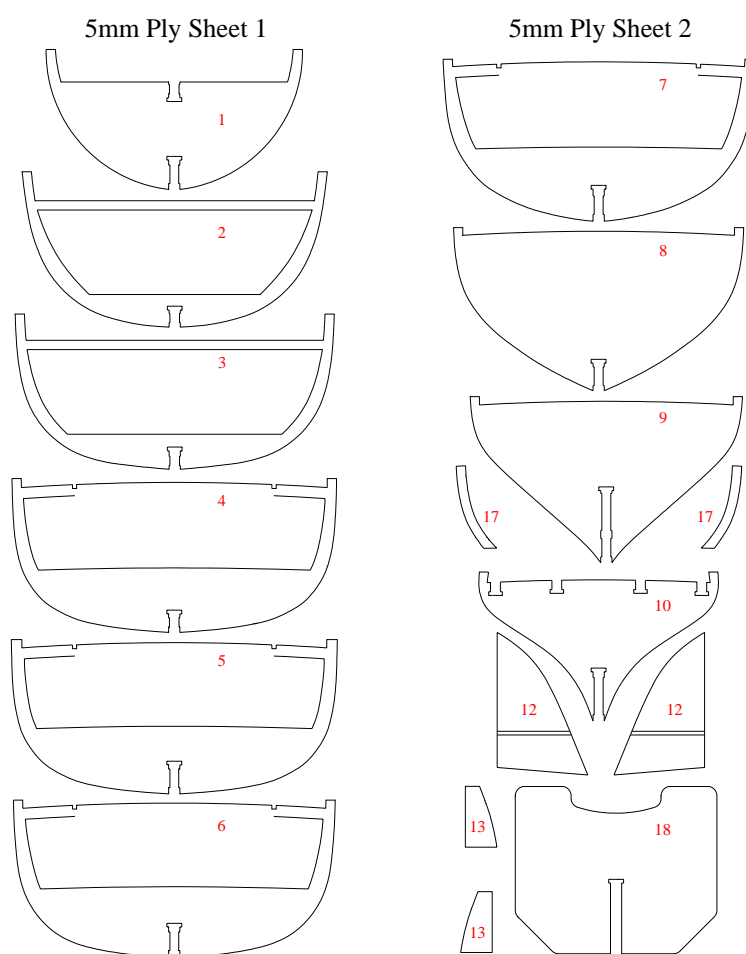
The majority of the model will be painted during various stages of the build. It is important to think ahead to the next stage in the construction process and paint the various parts at a convenient time, usually before securing on the model. It is often a good idea to paint parts for the next stage and while they are drying you can be working on the current stage.

Wherever possible, offer the parts together in a 'dry' fit before final assembly.

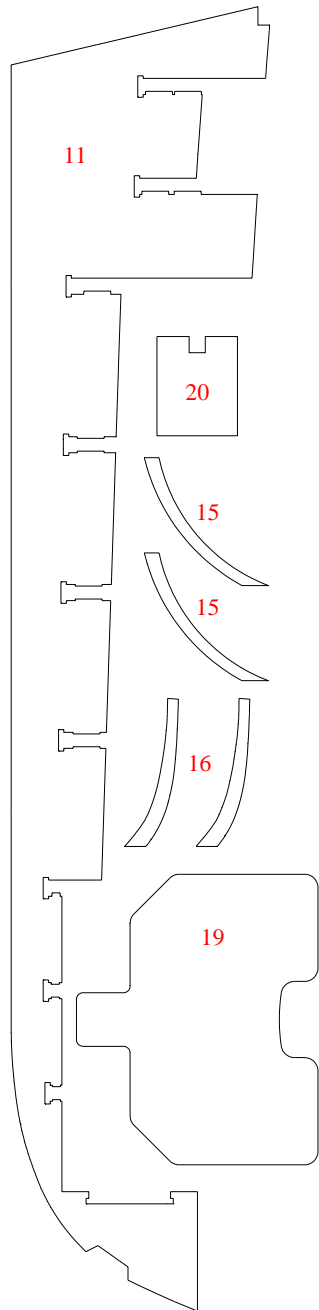
Note: You will find that there are 'extras' of many of the brass etched components and all delicate parts, as long as you have followed the build instructions and plans you should not be concerned by leftovers. Any quantities marked with an asterisk like this* denote required quantities to complete the model and there are definitely extras of this item provided.

5mm Ply

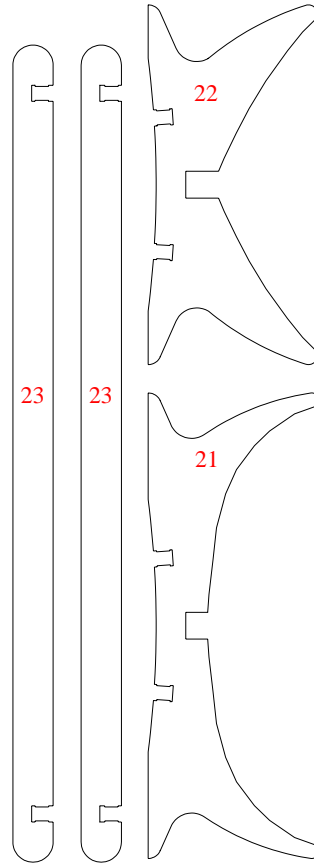
Part No.	Description	Material	Quantity
1	Bulkhead 1	5mm Ply	1
2	Bulkhead 2	5mm Ply	1
3	Bulkhead 3	5mm Ply	1
4	Bulkhead 4	5mm Ply	1
5	Bulkhead 5	5mm Ply	1
6	Bulkhead 6	5mm Ply	1
7	Bulkhead 7	5mm Ply	1
8	Bulkhead 8	5mm Ply	1
9	Bulkhead 9	5mm Ply	1
10	Bulkhead 10	5mm Ply	1
11	Keel	5mm Ply	1
12	Foremost bow plank termination pattern	5mm Ply	2
13	Aftermost bow plank termination pattern	5mm Ply	2
14	Stern extension lower cross member	5mm Ply	1
15	Bulkhead 1 internal planking termination pattern	5mm Ply	2
16	Bulkhead 4 internal planking termination pattern	5mm Ply	2
17	Bulkhead 8 internal planking termination pattern	5mm Ply	2
18	Temporary after support	5mm Ply	1
19	Temporary forward support	5mm Ply	1
20	Waterline jig	5mm Ply	1
21	Display stand forward end piece	5mm Ply	1
22	Display stand after end piece	5mm Ply	1
23	Display stand fore and aft braces	5mm Ply	2



5mm Ply Sheet 3



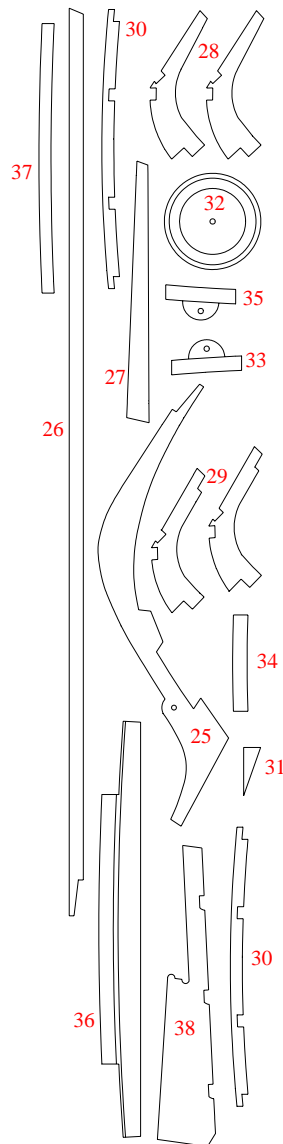
5mm Ply Sheet 4



5mm Walnut

Part No.	Description	Material	Quantity
25	Stem	5mm Walnut	1
26	False keel	5mm Walnut	1
27	Stern post	5mm Walnut	1
28	Inner stern extension	5mm Walnut	2
29	Outer stern extension	5mm Walnut	2
30	Stern extension upper cross member	5mm Walnut	1*
31	24pdr carriage quoin	5mm Walnut	1
32	24pdr bearing race	5mm Walnut	1
33	Transom port capping	5mm Walnut	1
34	Transom centre capping	5mm Walnut	1
35	Transom starboard capping	5mm Walnut	1
36	Waist hatch forward head ledge / step	5mm Walnut	1
37	Waist hatch after head ledge	5mm Walnut	1
38	Rudder	5mm Walnut	1

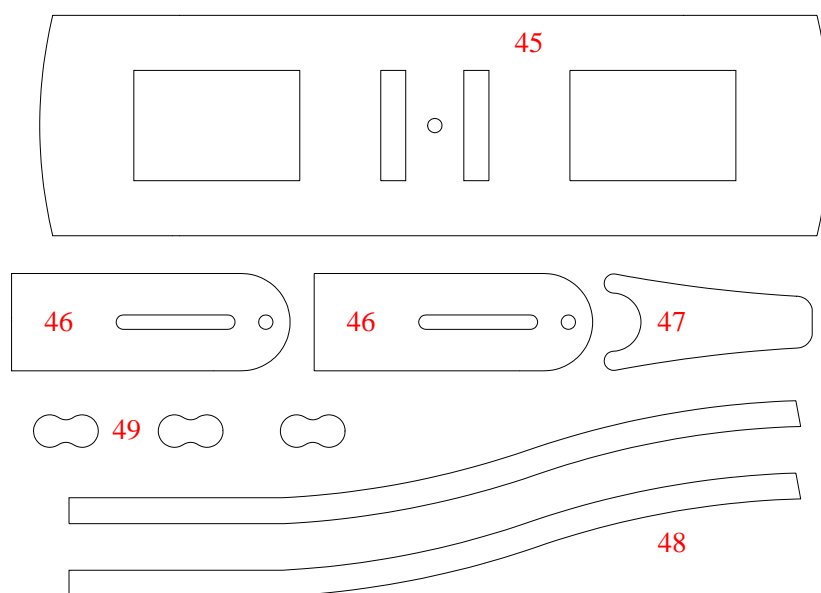
5mm Walnut Sheet 1



4mm Walnut

Part No.	Description	Material	Quantity
45	24pdr lower rotating bed	4mm Walnut	1
46	12pdr carronade traversing bed	4mm Walnut	2
47	Gaff jaws	4mm Walnut	1
48	Tiller	4mm Walnut	1*
49	Topping lift block	4mm Walnut	1*

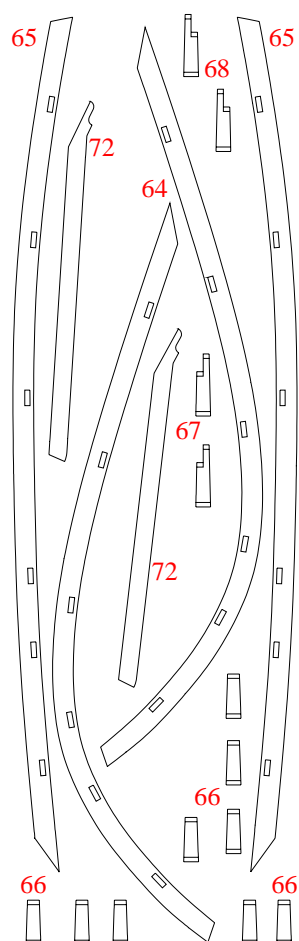
4mm Walnut Sheet 1



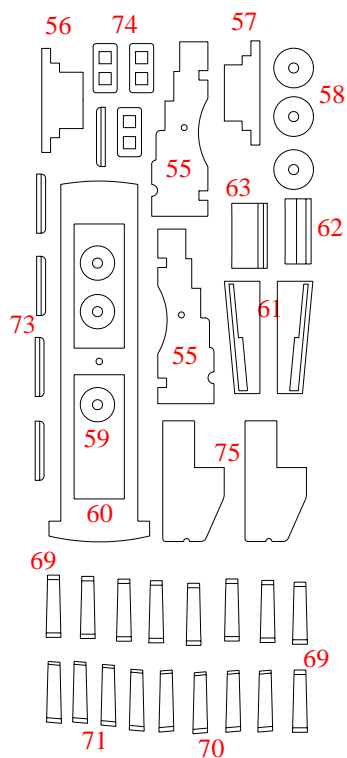
3mm Walnut

Part No.	Description	Material	Quantity
55	24pdr carriage sides	3mm Walnut	2
56	24pdr carriage forward axle	3mm Walnut	1
57	24pdr carriage after axle	3mm Walnut	1
58	24pdr carriage forward wheel	3mm Walnut	2*
59	24pdr carriage after wheel	3mm Walnut	2*
60	24pdr upper rotating bed	3mm Walnut	1
61	Companionway coamings	3mm Walnut	2
62	Companionway forward head ledge	3mm Walnut	1
63	Companionway after head ledge	3mm Walnut	1
64	Forward bulwark capping rails	3mm Walnut	2
65	After bulwark capping rails	3mm Walnut	2
66	Forward stanchions	3mm Walnut	8*
67	Stepped port stanchion	3mm Walnut	1*
68	Stepped starboard stanchion	3mm Walnut	1*
69	Waist stanchions	3mm Walnut	8*
70	After port stanchions	3mm Walnut	3*
71	After starboard stanchions	3mm Walnut	3*
72	Mast carlings	3mm Walnut	2
73	Gangway side steps	3mm Walnut	4*
74	Mast cappings	3mm Walnut	2*
75	Mast pivot support	3mm Walnut	2

3mm Walnut Sheet 1



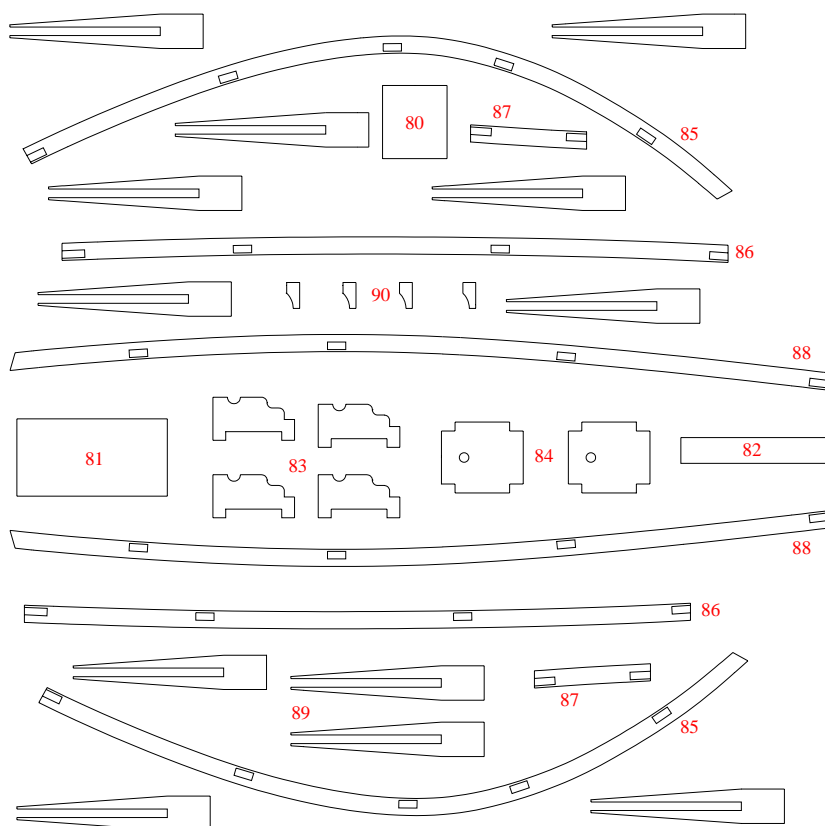
3mm Walnut Sheet 2



2mm Walnut

Part No.	Description	Material	Quantity
80	Stores hatch	2mm Walnut	1
81	Bulkhead 8 door to Captain's cabin	2mm Walnut	1
82	24pdr carriage bed	2mm Walnut	1
83	12pdr carronade carriage sides	2mm Walnut	4
84	12pdr carronade carriage sliding bed	2mm Walnut	2
85	Raised forward capping	2mm Walnut	2
86	Raised waist capping	2mm Walnut	2
87	Raised gangway capping	2mm Walnut	2
88	Raised after capping	2mm Walnut	2
89	Oar blades	2mm Walnut	10*
90	Stay stop cleats	2mm Walnut	2*

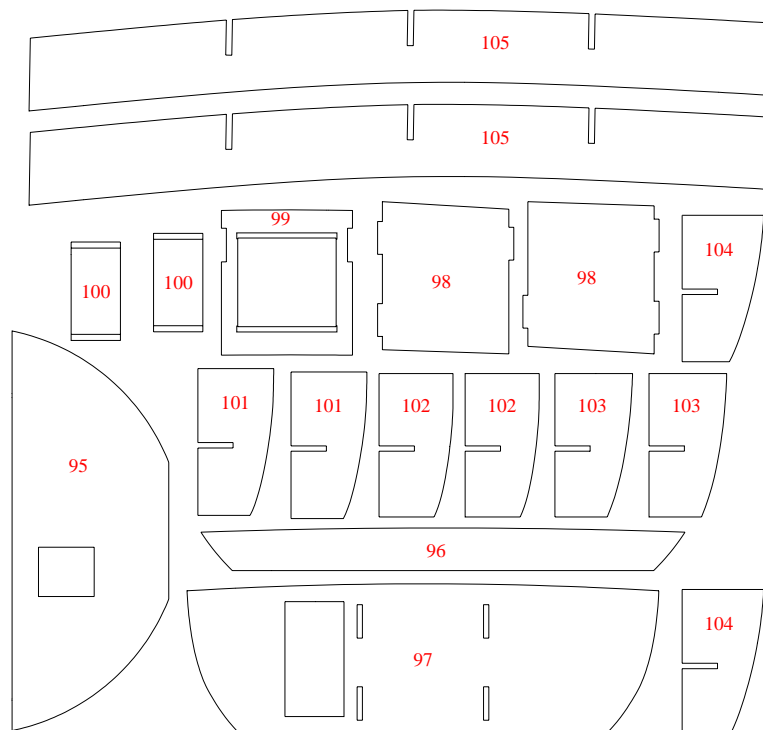
2mm Walnut Sheet 1



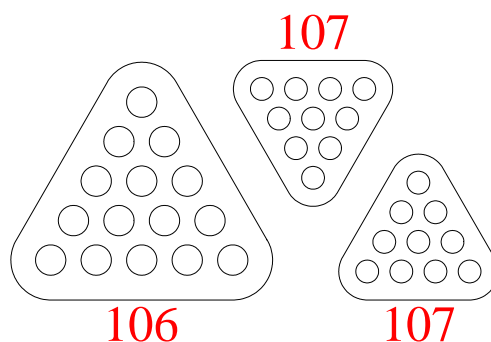
1.5mm Walnut

Part No.	Description	Material	Quantity
95	Store room bulkhead cover	1.5mm Walnut	1
96	Bulkhead 4 cover	1.5mm Walnut	1
97	Bulkhead 8 cover	1.5mm Walnut	1
98	Magazine room sides	1.5mm Walnut	2
99	Magazine room front	1.5mm Walnut	1
100	Magazine room doors	1.5mm Walnut	2
101	1st bunk space bulkhead (Fore)	1.5mm Walnut	2
102	2nd bunk space bulkhead	1.5mm Walnut	2
103	3rd bunk space bulkhead	1.5mm Walnut	2
104	4th bunk space bulkhead	1.5mm Walnut	2
105	Bunk space bench	1.5mm Walnut	2
106	24pdr cannon ball monkey	1.5mm Walnut	1
107	12pdr cannon ball monkey	1.5mm Walnut	2

1.5mm Walnut Sheet 1



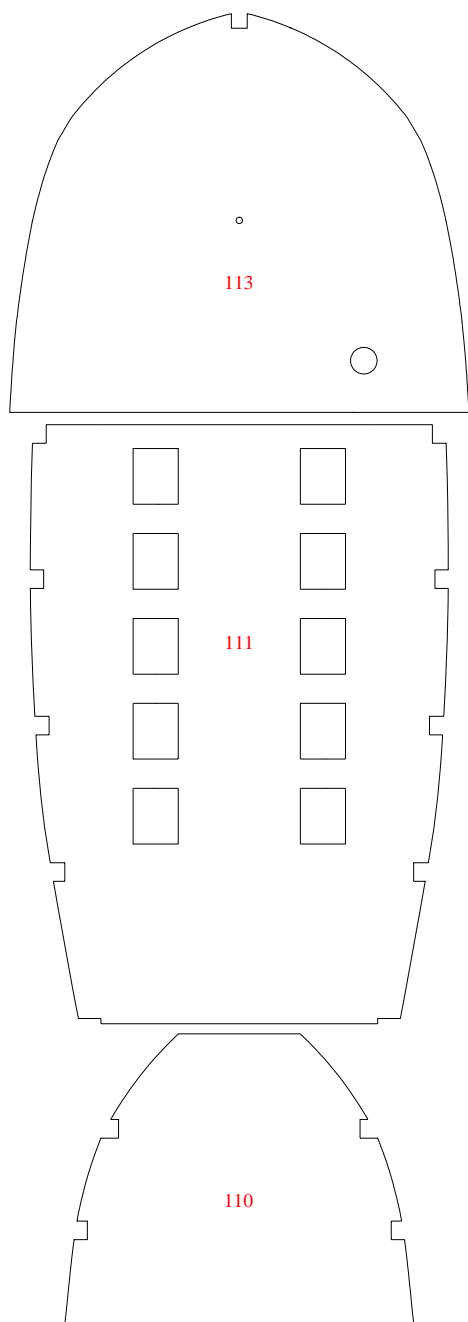
1.5mm Walnut Sheet 2



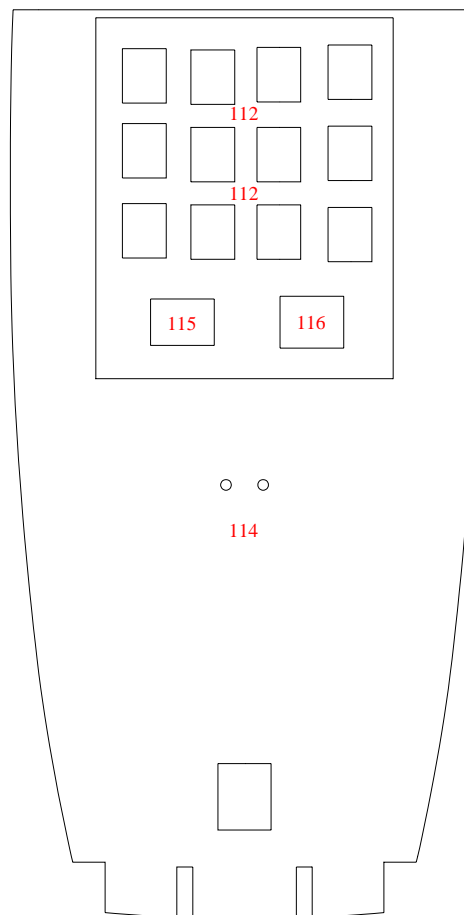
0.8mm Ply

Part No.	Description	Material	Quantity
110	Lower deck forward platform	0.8mm Ply	1
111	Lower deck	0.8mm Ply	1
112	Scuttle base	0.8mm Ply	10*
113	Forecastle	0.8mm Ply	1
114	Main deck	0.8mm Ply	1
115	Companionway stationary cover	0.8mm Ply	1
116	Companionway sliding cover	0.8mm Ply	1

0.8mm Ply Sheet 1



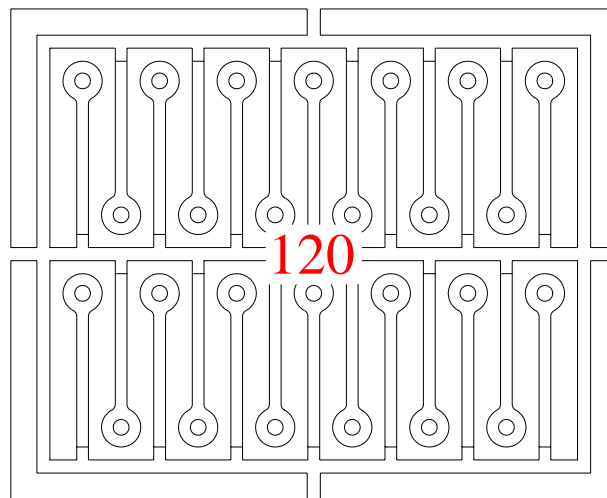
0.8mm Ply Sheet 2



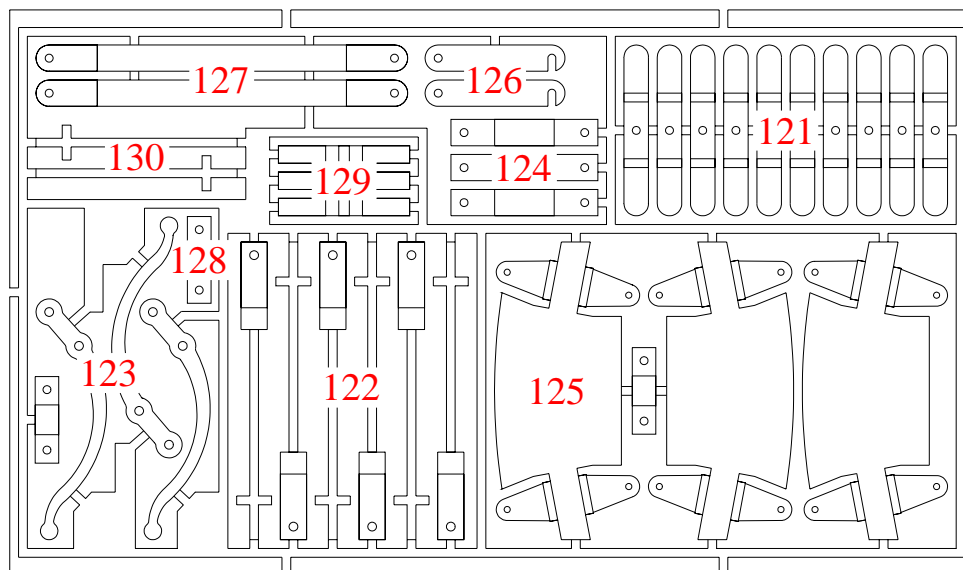
0.9mm Brass Etchings

Part No.	Description	Material	Quantity
120	Brass eyelets	0.9mm Brass	36*
121	Rowlocks	0.9mm Brass	8*
122	Elm tree pump yoke halves	0.9mm Brass	4*
123	Elm tree pump brake handle	0.9mm Brass	2*
124	Cannon trunnion straps	0.9mm Brass	2*
125	Cannon turntable axle plates	0.9mm Brass	2*
126	Lower mast strapping	0.9mm Brass	1*
127	Upper mast strapping	0.9mm Brass	1*
128	Mast pivot straps	0.9mm Brass	2*
129	Gangway capping hinges	0.9mm Brass	2*
130	Bowsprit support stanchion	0.9mm Brass	1*

0.9mm Brass Etched Sheet 1



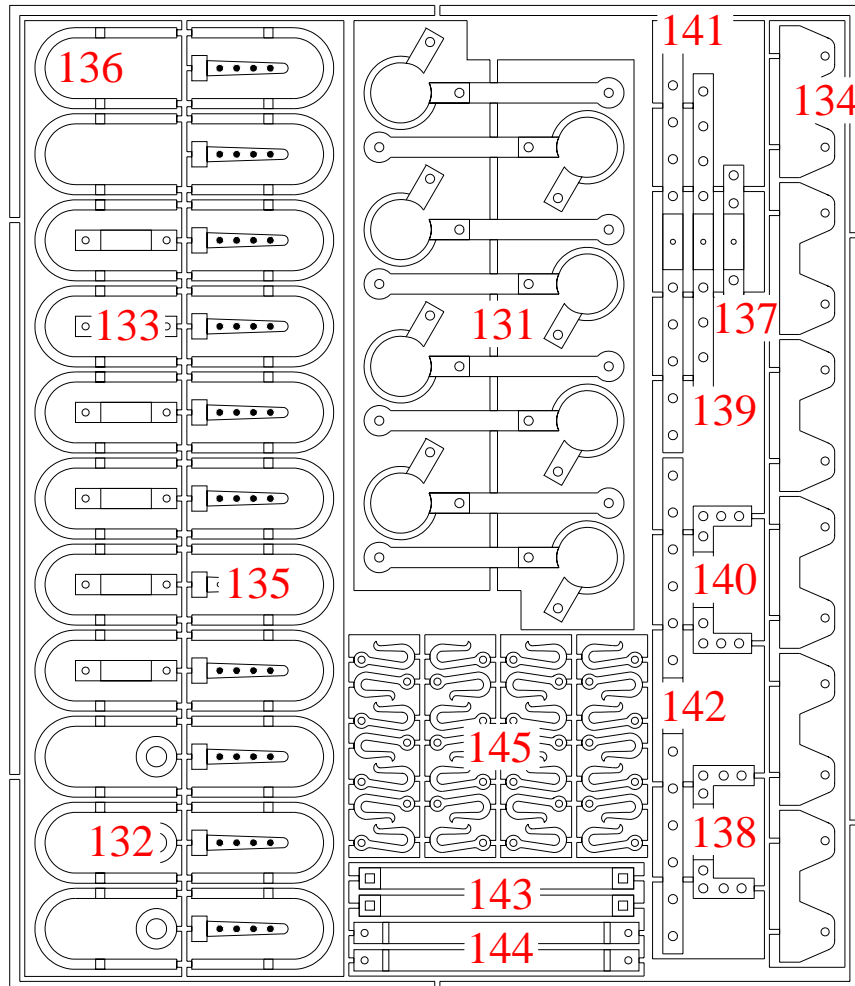
0.9mm Brass Etched Sheet 2



0.5mm Brass Etchings

Part No.	Description	Material	Quantity
131	Deadeye strops / chainplates	0.5mm Brass	6*
132	Elm tree casing end plate	0.5mm Brass	2*
133	Carronade trunnion straps	0.5mm Brass	4*
134	Carronade bed axle plates	0.5mm Brass	4*
135	Hinges (For cabin & magazine doors & stores hatch)	0.5mm Brass	8*
136	Scuttle hinges	0.5mm Brass	20*
137	1st pintle strap (For rudder)	0.5mm Brass	1
138	1st gudgeon strap (For hull)	0.5mm Brass	1
139	2nd pintle strap (For rudder)	0.5mm Brass	1
140	2nd gudgeon strap (For hull)	0.5mm Brass	1
141	3rd pintle strap (For rudder)	0.5mm Brass	1
142	3rd gudgeon strap (For hull)	0.5mm Brass	1
143	Bowsprit support strap	0.5mm Brass	1*
144	Bowsprit to stem strap	0.5mm Brass	1*
145	Rigging hooks	0.5mm Brass	12*

0.5mm Brass Etched Sheet 1



White Metal Castings

Part No.	Description	Material	Quantity
150	Cleats	Casting	6*
151	Kedge anchor	Casting	1
152	Kedge anchor palms	Casting	2
153	24pdr rammer	Casting	2
154	24pdr sponge	Casting	2
155	24pdr ladle	Casting	1
156	12pdr rammer	Casting	2
157	12pdr sponge	Casting	2

Copper, Bronze, Brass & Plastic Fittings

Part No.	Description	Material	Quantity
160	Cast bronze 24pdr cannon	Bronze	1
161	Cast bronze 12pdr carronade	Bronze	2
162	Cast bronze bucket	Bronze	3
163	Cast bronze ships stove	Bronze	1
164	Cast bronze stove chimney	Bronze	1
165	4mm cannon balls	Steel	59*
166	3mm cannon balls	Steel	42*
167	Copper eyelets	Copper	16*
168	Dome head pins	Brass	56*
169	Flat head pins	Brass	450
170	Rollers	Brass	8
171	Parrel beads	Plastic	8

Wooden Fittings & Blocks

Part No.	Description	Material	Quantity
175	Barrel (22mm)	Wood	1
176	Barrel (17mm)	Wood	4
177	Barrel (14mm)	Wood	2
178	Quoin handle	Wood	1
179	7mm deadeyes	Wood	3*
180	5mm deadeyes	Wood	16*
181	7mm single blocks	Wood	4*
182	5mm double blocks	Wood	5*
183	5mm single blocks	Wood	13*
184	3mm single blocks	Wood	8*
185	Topping lift block (pre-cut, see part number 49)	4mm Walnut	1*

Wire

Part No.	Description	Material	Quantity
190	0.75mm brass wire (450mm)	Brass	1
191	1.00mm brass wire (450mm)	Brass	1
192	1.50mm brass wire (250mm)	Brass	1

Rigging Thread

Part No.	Description	Material	Quantity
195	0.10mm natural thread	Thread	5m
196	0.25mm black thread	Thread	20m
197	0.25mm natural thread	Thread	4m
198	0.50mm black thread	Thread	5m
199	0.50mm natural thread	Thread	15m
200	0.75mm black thread	Thread	17m
201	1.00mm black thread	Thread	2m
202	1.00mm natural thread	Thread	2m
203	1.50mm black thread	Thread	6m
204	1.50mm natural thread	Thread	1.5m
205	1.80mm black thread	Thread	2m
206	1.80mm natural thread	Thread	0.15m

Strip Wood

Part No.	Description	Material	Quantity
210	1.5x5mm lime (600mm)	Lime Strip	70
211	2x7mm maple (600mm)	Maple Strip	60
212	0.5x5mm walnut (600mm)	Walnut Strip	1
213	0.5x7mm walnut (600mm)	Walnut Strip	2
214	1x7mm walnut (600mm)	Walnut Strip	90
215	1x10mm walnut (600mm)	Walnut Strip	2
216	2x3mm walnut (350mm)	Walnut Strip	2
217	2x4mm walnut (100mm)	Walnut Strip	1
218	5x5mm walnut (500mm)	Walnut Strip	2
219	6x6mm walnut (100mm)	Walnut Strip	1
220	7x8mm walnut (200mm)	Walnut Strip	1
221	4x4mm walnut (50mm)	Walnut Strip	1

Birch Dowel

Part No.	Description	Material	Quantity
225	2mm dowel (450mm)	Birch Dowel	2
226	3mm dowel (450mm)	Birch Dowel	3
227	4mm dowel (450mm)	Birch Dowel	1
228	5mm dowel (150mm)	Birch Dowel	1
229	6mm dowel (150mm)	Birch Dowel	1
230	8mm dowel (300mm)	Birch Dowel	1
231	10mm dowel (450mm)	Birch Dowel	1

Nautical Terminology

Anchor Arms	~ That part, from the anchor crown, on which the palm is formed.
Anchor Crown	~ The lowest end of the shank, where the arms are united.
Anchor Palm	~ The broadest part of the arm of an anchor, terminating in a point to fix in the ground.
Anchor Square	~ The upper part of the shank.
Anchor Stock	~ The cross-bar of an anchor, which causes one or other of the palms to turn to the bottom.
Arse (of a Block)	~ The end of a block farthest from the running sheave.
Athwartships	~ Perpendicular to the fore-and-aft centreline of a ship; across a vessel from side to side.
Bearding Line	~ The point, on a model, at which the hull planking begins to feather into the keel to form a flush fitting with the stern post.
Bed Bolt (Cannon Carriage)	~ Transverse bolt running through and between the carriage sides, to which the carriage bed was secured.
Belaying Point	~ The designated position of securing the running end of rigging.
Brake Handle (Elm Tree Pump)	~ A lever for a working machine; a handle, as of a pump.
Breech Rope	~ A strong rope attached to the breech of a gun to secure it to a ship's side.
Brown Stuff	~ A brown hull covering consisting of brimstone mixed with the pitch and tar of black stuff; hull covering intended to prevent weed growth and shipworm.
Bulwark	~ The side of a ship projecting above a deck.
Butt Shift System	~ The system of offsetting the ends of adjacent planks such that they do not all terminate on the same cross beams. Two butt shift, implies every other (every second) plank end aligns. Three butt shift, implies every third plank end aligns etc.
Cable Laid	~ A rope formed from three strands laid in left turns.
Cascabel	~ The part behind the basering of a cannon.
Cheese (of Rope)	~ To whirl round and coil a rope into a tight circular form.
Coaming	~ Part of the surrounds of a hatch fitted running fore-and-aft on a vessel.
Coil	~ Rope lay in regular folds for the convenience of stowage, and hanging upon cleats, to prevent its being entangled.
Deck Head	~ The underside of the deck immediately above.
Eye splice	~ The forming of an eye or circle at the end of a rope on itself, or eye in the middle of a rope.
Falls	~ The rope set up between blocks to form a tackle.
Fore-and-Aft	~ Lengthwise from bow to stern; perpendicular to athwartships; lying in the direction of the ships length; in a line parallel to the keel.
Freeboard	~ The distance between the waterline and deck.
Gudgeon	~ The bearing of a shaft, especially when made of a separate piece.
Gun Tackle	~ Rope and block pulley for drawing a carriage.
Head Ledge	~ Part of the surrounds of a hatch fitted running across the width of the vessel, (athwartships).
Hogging	~ The ship structure is said to be 'hogging' when the ends tend to droop and the middle to come up, this condition is most severe when the ship is poised on a wave with the crest amidships.
Hounds (of a Mast)	~ The projection(s) on a mast which support rigging.
Inboard	~ Toward a boats centreline; away from the outside, toward the centre; within the sides of or towards the centreline of a ship.
Lanyard	~ A length of rope used for securing something or tightening rigging.
Mast Truck	~ A cap at the top of a mast or flag-staff, usually containing a sheave for rope to run through.
Mortice	~ A hole made to receive a tenon.
Outboard	~ Toward or beyond a boats sides in a lateral direction from the centreline; away from the centre, toward the outside.
Pintle	~ A bolt or pin, especially one on which something turns.
Port	~ The larboard or left side of a ship.
Quoin	~ A wedge, especially for elevating a gun.

Rake (of a Mast)	~ A measurement of the angle of the mast leaning toward the bow or stern.
Rowlocks	~ A contrivance serving as a fulcrum for an oar.
Run Out	~ The cannon being brought to a position, outboard, ready for firing.
Sagging	~ The ship structure is said to be sagging when the middle tends to droop and the ends to come up, this condition is most severe when the ship is poised between waves with the trough amidships.
Score	~ A notch.
Seizing	~ Joining two ropes or two ends of one rope together, by taking several turns of a smaller rope around them.
Starboard	~ The right side of a ship.
Stealers	~ A regular plank cut for in-filling gaps between hull planks, usually of a triangular shape.
Tenon	~ A projection at the end of a piece of wood, and inserted into the socket or mortice of another, to hold the two together.
Traversing Handle (Carronade)	~ A handle mounted to the aft of the carronade to facilitate transverse rotation, also called a carronade tiller.
Traversing Tackle	~ Rope and block pulley for rotating a carriage.
Trunnion	~ Either of a pair of side projections on which anything (as formerly a big gun) is pivoted to move in a vertical plane.
Wale	~ Bands of heavy planking on each side of a ship, between waterline and gunports. These were intended to stiffen the hull fore-and-aft to help overcome the problem of hogging [†] and sagging [†] .
Waterline	~ The line on a ship to which she is submerged; the water level.
Whipping	~ To put several turns, of a smaller rope, upon the end of a rope to prevent it from unravelling.
Yoke Halves (Elm Tree Pump)	~ A frame which joins together.

Note: This is not a definitive listing of definitions; it is intended purely to assist the model maker in their understanding of the kit instructions.