



### Air Fan Kit 3100

Improves hatch rate by circulating a constant flow of warm air throughout the incubator. Converts Model 2100 Still Air Incubator to a Circulated Air Incubator. Quick connect wiring for ease of installation. Heavy duty stainless steel design. For use in environments with wide temperature variations.

Item #	Model	Size
95-3100	3100	



### Egg Turner 3200

Automatically turns the eggs completely every 4 hours to eliminate manual handling and improve hatch rate. Simple to use - place in bottom of incubator and plug in. No assembly required. Dishwasher safe - egg rails snap out for easy cleaning.

Comes with 41 large egg cups. Option small quail egg trays available. For use with Incubator Models 2100 and 2200 - included with Model 4200. Additional thermometer included. For use with Farm Innovators Incubators ONLY !

Item #	Model	Size
95-3200	3200	41 eggs



### Quail Rails 3400

Designed for quail and other small eggs. Replaces the standard rails on the Model 3200 Automatic Egg Turner. Holds up to 120 eggs - each rail holds 20 eggs. Easy to install and dishwasher safe. For use with Farm Innovators Egg Turner ONLY !

Item #	Model	Size
95-3400	3400	120 eggs

### Incubator, Egg Turner & Fan Kit



The 9200 Incubator is made of thermal plastic to hold warm and constant temperatures. The Turner, designed to be used with 9200 Incubators, automates the turning of eggs and the Forced Air Fan Kit converts a 9200 Incubator to a Circulating Air Incubator for better hatching.

Item #	Model	Type
95-37	6302	Small Egg Cups 120
95-40	9200	Incubator
95-41	10200	Incubator w/Fan Kit
95-43		Large Egg Cups 47
95-58		Brooder Thermometer
95-61		Universal Wafer

### Still Air Incubator 2100



Still air incubator features solid state circuitry for long lasting and reliable temperature setting. A built-in hygrometer measures both internal temperature and relative humidity. Red indicator light shows when heater is operating. Large windows on top allow for easy viewing. Additional probe thermometer included. Can hold up to 48 regular sized eggs.

Item #	Model	Size
95-2100	2100	48 eggs



### Egg Candler 3300

Item #	Model	Size
95-3300	3300	110 volt

## Galvanized Hanging Poultry Feeders



These durable Hanging Poultry Feeders are manufactured from galvanized steel with rolled edges for safety. Available in 3 sizes.

Item #	Model	Size
95-11		12 lbs
95-12		30 lbs
95-13		40 lbs
95-26		Feeder Cover



## Range, Reel & Flip Top Feeders



Range Feeder w/legs

Item #	Model	Size
95-5		36"
95-4		48"



Reel Top

Item #	Model	Size
95-3		18"
95-6		24"

## Slide Top- Flip Top

820 comes in A) Red B) Lime Green C) Purple D) Yellow

Item #	Model	Type
95-10	820	20" Flip Top
95-7	9814	12" Slide Top
95-8	9822	18" Slide Top
95-9	9830	24" Slide Top



## King Size Fount 2550

Holds up to 1.5 qts and waters up to 250 adult birds. Bowl measures 8" in diameter and 2 3/4" deep.

Item #	Model	Size
14-300	2550	1.5 qts



## Chick Fount 2525

This extra shallow bowl helps reduce the risk of baby birds drowning. Holds 1.5 pts of water and waters up to 200 baby chicks. Bowl measures 7" in diameter and 1 3/4" deep.

Item #	Model	Size
14-299	2525	1.5 pts



## Bowl Guard 1018

Accessory for the King Size (2550) and Game Bird (2500) Founts. Acts as an anti-roost device. Helps prevent debris from getting into water.

Item #	Model	Size
14-298	1018	



## Galvanized Mason Jar Feeder



The galvanized mason jar base is manufactured from heavy galvanized steel and built to last.



Item #	Model	Size
95-32	9810	



## Galvanized 6" Round Feeder



Item #	Model	Size
95-33	9808	6"



## Galvanized Mason Jar Waterer



Item #	Model	Size
95-30	9826	

## One Qt Waterer

740 Base comes in A) Red B) Lime Green C) Purple D) Yellow



Item #	Model	Type
95-19	690	Jar
95-31	740	Base
95-39	730	Quail Base

## One Gallon Waterer

Base comes in A) Red B) Lime Green C) Purple D) Yellow



Item #	Model	Type
95-28	666	Jar
95-29	750	Base

## One Gallon Waterer

Reduce storage space with nesting jugs. Low profile enhances stability. Base comes in A) Red B) Lime Green C) Purple D) Yellow



Item #	Model	Type
95-48	680	Jar
95-49	780	Base

## One Quart Plastic Feeder Base

Constructed of heavy duty polypropylene. Base features 8 openings with ribs to minimize feed spillage.



Item #	Model	Color
95-32A	806	Yellow
95-32B	806	Purple
95-32C	806	Green
95-32D	806	Red



### Galvanized Feed Scoop

Heavy duty galvanized feed scoops are manufactured from tough 24 gauge steel. Ideal for use around the farm.

Item #	Model	Size
95-20		3 quart
95-22		4 quart
95-24		6 quart
95-25		2 quart



### Plastic Feed Scoop

Item #	Model	Size
94-149	White	2 pint
94-150	Red	5 pint



### Aluminum Feed Scoop

Item #	Model	Size
43-75		5 oz
43-77		24 oz
43-79		58 oz



### Plastic 3 Quart Hand Feed Scoop

Item #	Model	Color
8-402A		Yellow
8-402B		Berry Blue
8-402C		Lime Green
8-402D		Hot Pink
8-402E		Green
8-402F		Red
8-402G		Blue
8-402H		Black



### 6 Quart Utility Feeder

Ideal for feeding all animals. To be used on a fence or in a stall.



Item #	Model	Color
8-403A	MF6	Blue
8-403B	MF6	Red
8-403C	MF6	Green
8-403D	MF6	Pink
8-403E	MF6	Berry Blue
8-403F	MF6	Lime Green



### Galvanized Feed Pan

Galvanized feed pan is made of heavy gauge galvanized steel. Holds 13 quarts.

Item #	Model	Size
95-34		13 qt



### Galvanized Poultry Fountains

The functional Double Wall Waterers are manufactured from heavy gauge steel and are available in 4 sizes.



Item #	Model	Size
95-15		2 gallon
95-14		3 gallon
95-16		5 gallon
95-17		8 gallon



### Plastic Poultry Fountains

Wide-mouth opening for easy filling and easy clean out. Transparent container shows visible water level. Available in 3 sizes.

Item #	Model	Size
95-45	PPF3	3 gallon
95-46	PPF5	5 gallon
95-47	PPF7	7 gallon



### Poly Poultry Feeders

Hardened steel center axle. Durable polyethylene construction. Feed saver lip. Available in three sizes.

Item #	Model	Size
95-52		3 lb
95-53		11 lb
95-54		22 lb
95-56		Lid for 11#
95-59		Lid for 22#



### 4 & 10 Hole Nest

All exposed edges folded to prevent injury. Ventilation holes in partitions for fresh air flow. Nest bottoms are removable for easy cleaning and litter replacement. Double bolted perches are hinged to allow closing. Hangers are standard. Nests can be staggered back to back to prevent hens from passing between tiers. Comes knocked down.

Item #	Model	Type
95-51	410B	10 Hole
95-50		4 Hole



### Duraflex Feed Pans

Item #	Model	Size
8-400	HP-1	2 qt
8-407	HP-2	4 qt
8-404	HP-8	8 qt
8-397	HP-3	3 gallon
8-398	HP-650	6.5 gallon
8-399	HP-750	6.5 gal w/hooks
8-402	HP-15	15 gallon



### 1 3/4 Bushel Muck Bucket

Item #	Model	Size
14-100A	PSB70	Green
14-100B	PSB70	Blue
14-100C	PSB70	Red
14-100D	PSB70	Black



### 8 Gallon Round Feeder

Item #	Model	Size
14-113A	P800	Blue
14-113B	P800	Green
14-113C	P800	Red
14-113D	P800	Black
14-113E	P800	Navy
14-113F	P800	Burgundy



### Duraflex Buckets

Dura Flex rubber products are molded from the finest corded rubber for maximum strength and durability. This special grade of rubber is crack-proof, freeze proof, crush proof and extremely pliable. With such a soft, tough bucket, risk of animal breaking is minimized.

Item #	Model	Size
8-391	DF-8	8 qt
8-392	DF-10	10 qt
8-395	DF-12	12 qt
8-394	DFP-18	18 qt



### 8 Quart Pails

Item #	Model	Color
14-105A	P8	Pink
14-105B	P8	Green
14-105C	P8	Black
14-105D	P8	Burgundy
14-105E	P8	Red
14-105F	P8	Navy
14-105G	P8	Yellow
14-105H	P8	Lime Green
14-105I	P8	Berry Blue
14-105J	P8	Purple



### 20 Quart Flat Back Buckets

Item #	Model	Size
14-102A	FB20	Blue
14-102B	FB20	Red
14-102C	FB20	Yellow
14-102D	FB20	Green
14-102E	FB20	Black
14-102F	FB20	Burgundy
14-102G	FB20	Pink
14-102H	FB20	Navy
14-102I	FB20	Berry Blue
14-102J	FB20	Lime Green
14-102K	FB20	Purple



### 3 Gallon Plastic Pan Feeder

Available in black only.  
18 1/4" x 18 1/4" x 4 1/2"

Item #	Model	Color
14-112	PLBP3	Black



### Corner Bucket

Item #	Model	Color
8-401	DFC20	20 qt



### Bucket Holders

Item #	Model	Type
8-389	CB20	Corner
8-390	WB10	Wall
8-388	WB60	Wall





### Fence Feeders

Comes with snaps.

Item #	Model	Type
14-96A	FF11	11" Red
14-96B	FF11	11" Black
14-97A	FF16	16" Red
14-97B	FF16	16" Black



### 24 Qt Hook Over



The 16 quart feeder is built of farm-tough, high-density polyethylene for superior strength. The built in divider allows for simultaneous feeding or separating pellets, feed and supplements. Heavy duty steel brackets allow the feeder to hang on wire, pipe and board fences.



Item #	Model	Color
14-99A	HFP24	Red
14-99B	HFP24	Blue
14-99C	HFP24	Green
14-99D	HFP24	Black

### 8 Qt Hook Over



Molded bracket fits easily over any 2-by-wide board to create a sturdy feed pail anywhere.



Item #	Model	Color
14-106A	CPH	Red
14-106B	CPH	Blue
14-106C	CPH	Green

### Duraflex Flat Back Buckets



Our new design features a wider opening with convenient stacking rims and ribs so the buckets are easier to pull apart when stacked. Come in the popular Flat Back Design.



Item #	Model	Size
8-386	DF8FB	8 quart
8-387	DF12FB	12 quart
8-396	DF18FB	18 quart
8-403	DFW20	20 quart

### 18 QT Rubber Hook Over



This Hook Over Feeder is more crack-proof, crush-proof and freeze-proof than plastic. Features molded bracket hooks that easily hook over any 2-by-wide board.

Item #	Model	Size
8-406	DF18HF	18 QT



### Feed Pan

Solid bottom polyethylene feeder holds 10 quarts of feed.

Item #	Model	Color
14-108	FP10	Black

### Mineral Feeder

Interior ribs lift and position salt block, allowing moisture to escape through drain holes.

Item #	Model	Color
14-110	MP10	Black

### Baby Pig Waterer



This watering system includes polyethylene jug, base, and metal tray. 1 gallon size. Model BPW4.



Item #	Model	Size
14-35	BPW4	1 gallon
14-36	BPW1	Rep. Jar

### Baby Pig Feeder



24-gauge galvanized steel 2 Hole feeder has a 7 lb capacity.



Item #	Model	Size
14-33	BPF2	7 lb

### Baby Pig Feeder



24-gauge galvanized steel 3 Hole feeder has a 9 lb capacity.



Item #	Model	Size
14-34	BPF3	9 lb

### Galvanized Pails



Double L

Item #	Model	Size
42-270		4.25 gallon
42-286		12 quart

### Stainless Steel Pails



Double L

Item #	Model	Size
42-300		9 quart
42-305		13 quart

### 32 oz Spray Bottles



Item #	Model	Color
22-35A	PS32	Purple
22-35B	PS32	Blue
22-35C	PS32	Green
22-35D	PS32	Red
22-35E	PS32	Teal
22-35F	PS32	Black
22-35G	PS32	Pink



## 2 Quart Calf Bottle

Bottles come complete

Item #	Model	Type
24-12		Screw On
24-13		Snap On



## Calf Bottle Holder

Item #	Model	Type
24-10	97	Plastic



Item #	Model	Type
24-5		Screw Cap Nipple



Item #	Model	Type
24-11		Screw Cap



## Snap On Nipples

Item #	Model	Type
24-6		Calf
24-7		Lamb



## Pop Bottle Nipple

Item #	Model	Type
24-25		Black Rubber

## Pritchard Nipple

Item #	Model	Type
24-30		



## Milk Specialties- EZ Nurse

Bottles come complete

Item #	Size	Type
24-52	2 qt Bottle	Screw On
24-54	2 qt Bottle	Snap On
24-56	3 qt Bottle	Screw On
24-74		Screw Cap Only
24-76		Screw Cap Nipple
24-77		Snap Nipple
24-78		Screw Cap Lamb Nipple
24-70		2 qt Bottle Rack
24-71		3 qt Bottle Rack



## Lambbar Bucket

Breakproof bucket with crosscut opening red nipple, valve and backholder. Holds 8 quarts. Bottom feeding. Plastic valve is easily taken apart for cleaning. Bucket comes with 6 nipples.

Item #	Model	Type
48-21		Bucket
48-22		Nipple
48-25		Valve



## Plastic Calf Pails

Attaches easily to fences. Comes with optional hanging bracket

Item #	Model	Type
48-8	CP8	w/nipple
48-6	CP9	w/o nipple
48-3	CP8	valve only
48-4	CP8	nipple only

## Galvanized Pails

Item #	Model	Type
48-10	4500	Pail W/Nipple
48-11	4502	Pail w/o Nipple
48-15	4500-2	Nipple
48-17	45003	Valve Complete
48-18	4500-8	Valve Nut
48-19	45007	Rubber Washer

## Fiberglass Pails

Item #	Model	Type
48-12	#4	Pail Complete
48-16	4503-3	Nipple

## Dry Start Feed Nipple Bottle

Item #	Type
24-100	Bottle Complete
24-110	Replacement Nipple



### Water Bottles

Item #	Model	Size
58-36	AW8	8 oz
58-35	AW16	16 oz
58-34	AW32	32 oz
58-40	CPB8	8 oz Clear
58-41	CPB16	16 oz Clear
58-42	CPB32	32 oz Clear
58-39	BB64	64 oz
58-32	FTB32	32 oz Flip-top



### Rabbit Feeders

Item #	Model	Size
58-3	AF3S	3"
58-8	AF3ML	3"
58-11	AF5ML	5"
58-12	AF7ML	7"
58-17	AF5S	5"
58-18	AF7S	7"
58-20	AF3SL	3"
58-21	AF5SL	5"
58-22	AF7SL	7"

### Automatic Stock Tank Float Valve

Automatic stock tank float valves are the perfect way to supply water to stock tanks, troughs, and barrels.



Item #	Model	Type
14-60	TM825	Plastic
14-62	TM830	Metal

Item #	Model	Type
14-64	TM825T	Plastic
14-66	TM830T	Metal



### Non-Siphon

Item #	Model	Type
14-68	TM825AS	Plastic
14-70	TM83AS	Metal



### Funnel Feeder

Item #	Model	Size
58-4	FF36	



### Cage Clips & Pliers

Item #	Model	Type
58-64	ACC1	1 lb
58-46	ACP2	Pliers



### Soda Bottle Converter

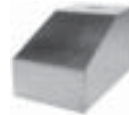
Item #	Model	Size
58-38	EFF1	



### Cage Cups

Item #	Type	Size
58-80	Metal	Quart
58-83	Plastic	Quart
58-85	Plastic	Pint
58-90	Plastic	1/2 Pint

Plastic is black.



### Rabbit Nest

Item #	Model	Size
58-25	AN-1	18"



### Salt Spool Holders

Item #
41-644





### Rabbit Hutch Kit

This easy to assemble kit includes everything needed for rabbit raising all-in-one package! Includes 24 x 24 x 16 hutch, plastic dropping pan, frame kit, 5 inch Sifter Feeder with Lid, 32 oz water bottle, cage clips and wire clip pliers.

Item #	Model	Size
58-200	RHK	Kit



### Rabbit Hutches

These easy assembly hutches are constructed with rust-resistant, easy to clean wire mesh. Doors are surrounded by protective vinyl guards and feature spring tension door latches. Wire mesh bottom is 1 inch x 1/2 inch and sides are 2 inch x 1 inch.

Item #	Model	Size
58-48	AH2424	24" x 24"
58-50	AH3030	30" x 30"
58-51	AH3036	30" x 36"



### Frame Kit

Designed to suspend the hutch over the dropping pan for easier cleaning, conserve space by stacking hutches four high when bolting frame kits together.

Item #	Model	Size
58-52	AHFK24	24"
58-53	AHFK30	30"



### Dropping Pans

Item #	Model	Size
58-230	D24	24"
58-231	D30	30"
58-232	D36	36"



### Urine Guard Kits

Guards help prevent urine from spraying out of the back and side of hutch. Attaches easily to wire mesh with pre-formed tabs.

Item #	Model	Size
58-56	AUG2424	24"
58-57	AUG3030	30"
58-63	AUG3036	36"



### Pop-Up Wire Cage

This updated design features rounded corners and evenly spaced wire for hanging feeders and waterers. Available in three sizes.

Item #	Model	Size
58-100A	150903	Small
58-100B	150910	Medium
58-100C	150927	Large



### Plastic Bottom Rabbit Cage

Deep plastic tray is ideal for in-home use by helping to contain bedding litter. Easy to clean. Available in three sizes.

Item #	Model	Size
58-102A	150934	Small
58-102B	150941	Medium
58-102C	150958	Large



### Kennel Crock

With the Kennel Crock, dogs receive necessary nourishment while kennels stay clean! Off-the-floor design and secure attachments prevent spills. Ideal for pet carriers, holding pens, display cages and kennels. Quick-turn screw and bracket design locks crock in place.



Item #	Model	Size
58-43	QLC10	10 oz
31-88	KC-20	20 oz
31-91	KC-40	40 oz

### Dura-Mate Automatic Waterer



This unique and large capacity (16 quart) waterer has been designed with the adjustable float to maintain a constant level of water. Adjustable metal brackets allow for over the fence or on the wall installation. FW16 is red in color. FW16MTL is black in color and has metal float cover.

Item #	Model	Size
14-99	FW16	16 quart
14-100	FW16MTL	16 quart





### Horse Play Balls

What sport does your horse play? Provides fun exercise for horses of all ages. Made of non-toxic materials to withstand biting and puncturing. Never needs air and will not deflate. Use to alleviate boredom and stress.

Item #	Size	Color
14-101A	8"	Blue
14-101B	8"	Red
14-101D	10"	Blue
14-101E	10"	Red



### 20 Quart Fence Feeder

Adjustable metal brackets allows for over the fence or on the wall installation. Red in color.

Item #	Model	Size
14-98	FF20	20 qt



### Foal Feeder

Adjustable bar selection prevents mares from eating rations. Blue in color.

Item #	Model	Size
14-115	PF25	



### 19 Quart Feed Pan

A pan that features lightweight and durable construction. Versatility is designed in. It has handles for comfortable grip and easy carrying. Big 18 1/2" top diameter and 14" bottom diameter. 7" deep.

Item #	Model	Color
8-404A		Blue
8-404B		Red
8-404C		Green
8-404D		Black



### Corner Feeders

Ideal for the stall and can be mounted using lag screws or optional feed tub mounting ring. Optional feed saver ring can also be used with the corner feeder. Available in 4 colors.

Item #	Model	Color
8-406A	PCF6	Blue
8-406B	PCF6	Green
8-406C	PCF6	Red
8-406D	PCF6	Black



### Mounting Rings

Item #	Model	Fits
8-410	CF-1	MF6
8-411	CF-2	PCF6
8-409	Grill	MF6
14-113	FS800	P800

### Poultry Leg Bands

Item #	Size	NO.	Color
95-90A	9/16"	50's	Red
95-90B	9/16"	50's	Blue
95-90C	9/16"	50's	Green
95-90D	9/16"	50's	Orange
95-90E	9/16"	50's	Yellow
95-91A	7/8"	50's	Red
95-91B	7/8"	50's	Blue
95-91C	7/8"	50's	Green
95-91D	7/8"	50's	Orange
95-91E	7/8"	50's	Yellow

### Poultry Leg Bands

Item #	Size	NO.	Color
95-95A	9/16"	1-25	Red
95-95B	9/16"	26-50	Red
95-95C	9/16"	51-75	Red
95-95D	9/16"	76-100	Red
95-96A	9/16"	1-25	Blue
95-96B	9/16"	26-50	Blue
95-96C	9/16"	51-75	Blue
95-96D	9/16"	76-100	Blue
95-97A	9/16"	1-25	Green
95-97B	9/16"	26-50	Green
95-97C	9/16"	51-75	Green
95-97D	9/16"	76-100	Green
95-99A	9/16"	1-25	Yellow
95-99B	9/16"	26-50	Yellow
95-99C	9/16"	51-75	Yellow
95-99D	9/16"	76-100	Yellow
95-100A	3/4"	1-25	Red
95-100B	3/4"	26-50	Red
95-100C	3/4"	51-75	Red
95-100D	3/4"	76-100	Red
95-101A	3/4"	1-25	Blue
95-101B	3/4"	26-50	Blue
95-101C	3/4"	51-75	Blue
95-101D	3/4"	76-100	Blue
95-102A	3/4"	1-25	Green
95-102B	3/4"	26-50	Green
95-102C	3/4"	51-75	Green
95-102D	3/4"	76-100	Green
95-103A	3/4"	1-25	Pink
95-103B	3/4"	26-50	Pink
95-103C	3/4"	51-75	Pink
95-103D	3/4"	76-100	Pink
95-104A	3/4"	1-25	Yellow
95-104B	3/4"	26-50	Yellow
95-104C	3/4"	51-75	Yellow
95-104D	3/4"	76-100	Yellow



### Salt Brick Holder

Item #	Model	Coated
14-200	SB1	Rubber
14-202	148676	S.S.
14-205	SPB2	Plastic
14-204	Sifto	Metal



### Hay Bag

A bag used to keep hay neat within a stall or trailer. Made of nylon rope. Designed with a large drawstring mouth for ease of filling and ease of tying. 43" long.

Item #	Size
1-5	43"

### Premium T Horse Halters

Valhoma's premium T halter is available with an adjustable chin (TAC), or an adjustable chin & throat snap (TACS).



Fitting Chart

Size	Pounds
1-20	100-200
2-30	200-300
3-50	300-500
5-80	500-800
8-11	800-1100
11-15	1100-1500
15-20	1500-2000

Item #	Color	Size
1-25A	Black	1-20TAC
1-25B	Blue	1-20TAC
1-25C	Green	1-20TAC
1-25D	Red	1-20TAC
1-27A	Black	2-30TAC
1-27B	Blue	2-30TAC
1-27C	Green	2-30TAC
1-27D	Red	2-30TAC
1-30A	Black	3-50TAC
1-30B	Blue	3-50TAC
1-30C	Green	3-50TAC
1-30D	Red	3-50TAC
1-36A	Black	5-80TACS
1-36B	Blue	5-80TACS
1-36C	Green	5-80TACS
1-36D	Red	5-80TACS
1-37A	Black	8-11TACS
1-37B	Blue	8-11TACS
1-37C	Green	8-11TACS
1-37D	Red	8-11TACS
1-38A	Black	11-15TACS
1-38B	Blue	11-15TACS
1-38C	Green	11-15TACS
1-38D	Red	11-15TACS
1-39A	Black	15-20TACS
1-39B	Blue	15-20TACS
1-39C	Green	15-20TACS
1-39D	Red	15-20TACS

### Nylon Leads

Item #	Type
1-70	Nylon Lead
1-72	6' Lead w/Chain

### Galvanized Hanging Corner Feeder



Works great for supplemental uses like feeding shells or grit. Space-saving corner design with built-in hooks for hanging in hutch or coop. Sturdy galvanized steel has rolled edges for safety.

Item #	Model	Size
95-105	167543	

### Galvanized Round Hanging Waterer



Built-in hooks allow this waterer to hang off the ground to reduce spillage and soiling of water. Saves space on your hutch or coop floor, too. Gravity-feed design is easy to fill and clean. Sturdy galvanized steel has rolled edges for safety. Economical and perfect for the small flock of adult birds. 1-pint capacity.

Item #	Model	Size
95-107	167451	

### Galvanized Bucket Waterer



Carry water to your backyard flock and water them in the same bucket! Unique design serves as a bucket for filling and carrying, then converts to a gravity-feed waterer. Sturdy galvanized steel has rolled edges for safety. You won't find anything easier to fill, carry, and clean. 1-gallon size with built-in handle is perfect for small poultry flocks. Recommended for adult birds.

Item #	Model	Size
95-109	167611	1 gallon