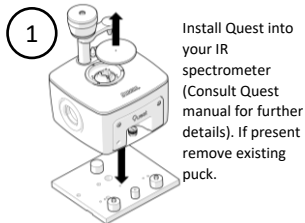
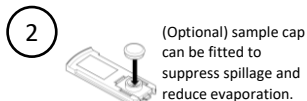
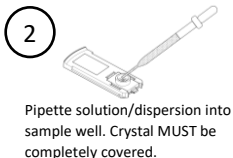
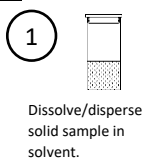


Quest Preparation

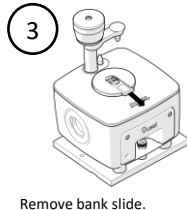
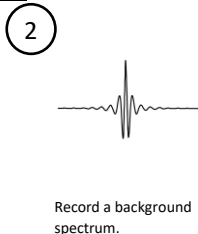
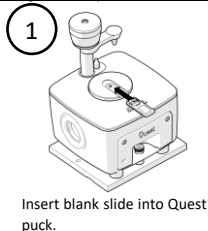


Sample Loading

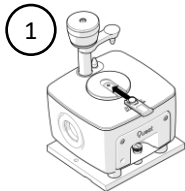
! To avoid damage to your quest and spectrometer samples should be loaded away from the spectrometer.

LiquidsSolids

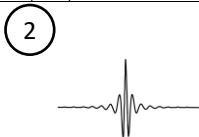
Sample Measurement

Background Spectrum Collection

Sample Spectrum Collection



1
Insert sample slide into Quest puck.



2
Record a sample spectrum.

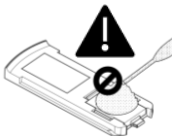


3
Remove sample slide.

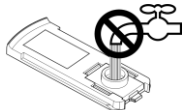
Tips and Tricks



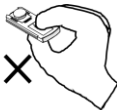
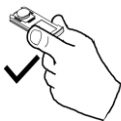
Do NOT apply a load to the slide.



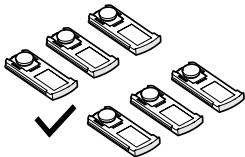
Do NOT overfill the sample well.



No cleaning required.



For easy insertion into the puck grasp slide by edges rather than top/bottom.



Do batch prepare samples.

These terms apply to and form part of the terms of use and any contract between Specac Limited and any purchaser of Arrow and when issued shall supersede any other terms. Specac Limited shall not be liable for any for any defects appearing in an Arrow sold or supplied by Specac Limited to the extent that such defects arise as a result of the purchaser or any user modifying or tampering with the goods or failing to operate Arrow in accordance with instructions issued by Specac Limited from time to time in relation to installation, operation, storage or maintenance. All warranties other than those expressly given by Specac Limited in its conditions of sale, or which are implied and may not be excluded by virtue of an applicable statute or regulation shall be excluded to the fullest extent permitted by law.