

VOICE ENHANCEMENT SYSTEM



The **Bogen Enhancer** is a dual-channel, Infrared (IR) Wireless Microphone System designed to enhance a presenter's voice in all areas of a room. IR Technology eliminates the interference and cross-talk from adjacent rooms that occurs in FM-based wireless products. *Shipping Weight: 7 lb.*

Basic Enhancer System Features:

- 1 Dual-channel receiver
- 2 Infrared sensors
- 1 Body-pack microphone
- 1 Lavalier microphone
- 1 Headset microphone
- 1 Body-pack lanyard
- 1 Body-pack wireless transmitter
- 1 External Power Supply

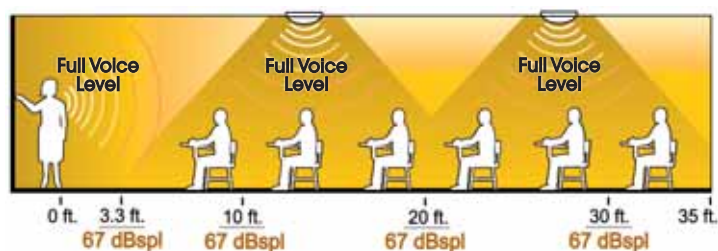
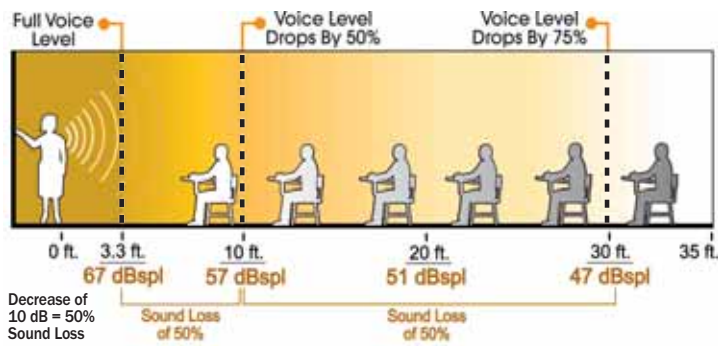
Basic Features:

- Simultaneous dual-channel operation
- Separate volume controls for each channel
- Body-pack transmitter with belt clip and lanyard
- Two wide-angle IR sensors (with Plenum-rated cable), expandable to 4 sensors
- Wide-dispersion emitter array in transmitters
- Unbalanced mixed audio output
- Handheld wireless mic transmitter available

Accessories
See Chart on
Page 81

DISTRIBUTE SOUND EVENLY THROUGHOUT A ROOM

Typical room in which listeners sitting in the rear of the room hear only 25% of what the presenter says.



With Bogen Enhancer, individuals sitting at the back of the room can hear just as well as those who are sitting up front.

ENHANCER Voice Enhancement System

8 Pre-packaged systems provide effective voice reinforcement solutions for the most challenging room environments.

ESYS1



ESYS1: 1 Basic Enhancer System, 1 GS35 Amplifier, 4 S86T725PG8WVR Ceiling Speakers, 4 TB8 Tile Bridges, 4 RE84 Ceiling Enclosures



ESYS1M

w/ Wireless Handheld Microphone

ESYS1M: Also includes Handheld Microphone

ESYS2



ESYS2: 1 Basic Enhancer System, 1 GS60 Amplifier, 4 FG15W Surface-Mounted Speakers



ESYS2M

w/ Wireless Handheld Microphone

ESYS2M: Also includes Handheld Microphone

ESYS3



ESYS3: 1 Basic Enhancer System, 1 GS35 Amplifier, 4 CSD2X2 Ceiling Tile Speakers



ESYS3M

w/ Wireless Handheld Microphone

ESYS3M: Also includes Handheld Microphone

ESYS4



ESYS4: 1 Basic Enhancer System, 1 GS60 Amplifier, 4 HFCS1 Ceiling Speakers, 4 TBCR Tile Bridges



ESYS4M

w/ Wireless Handheld Microphone

ESYS4M: Also includes Handheld Microphone

Targeted Communication

The PI35A and SI35A allow background music to play, without interruption, in selected areas while one or more rooms communicate directly with the main unit. This feature is useful in a number of applications, including:

Schools: A live news broadcast can be played over the system into all rooms. If an administrator needs a student, the call for the student can be placed directly into the classroom the student is in, without interrupting the live news broadcast to all the other classrooms.

Medical Center: If a nurse at the main desk needs to communicate immediately with one of the physicians, the nurse can call directly into the exam room where the physician is without interrupting the background music being played in all patient areas. This keeps the physician's demand and schedule private, so patients do not become concerned about the length of their wait before they get to see the physician.

Connects To Existing Phone Systems

With the WMT1A Line Matching Transformer, a connection can be made to the page port from the phone system. This allows an All-Call/Emergency notice to be made using the in-house phone system.

INTERCOMS



SI35A

Desktop Intercoms



PI35A

The **SI35A** and **PI35A** High-Powered Desktop Control Centers are dual-channel intercom and program distribution systems for applications with numerous locations, requiring maximum intelligibility of voice announcements and other sources.

Product Features:

- Communicate w/ 25 to 75 rooms or remote locations, using up to three 25-room capacity room selector panels (PI35A - 25-room maximum; SI35A - expand to 75-room maximum)
- Distribute program material from microphones, CD player/tuner or other background music sources, tone signals, and emergency announcements to all or select locations
- 5 inputs: 2- MIC (1 built-in console mic), 1- AUX (Hi-Z) unbalanced, 1- TEL, 1- 25V booster amplifier
- Built-in 20W intercom amplifier and 35W program amplifier permit instant communication w/ any location w/o interrupting the distribution of program to other locations
- Built-in panel speaker to monitor program or listen to a station via intercom channel
- Instant Emergency/All-Call paging w/ a single push button
- Push-to-talk switch to communicate with selected intercom stations
- Station call-in annunciated with tone and illuminated light
- Time signal tone activated from external contact closure
- Telephone paging capabilities
- 25V balanced line output to drive a distributed speaker system
- Remote stations can be wall- or ceiling-mounted loudspeakers or horn-type loudspeaker
- Call-in switch can be used where call initiation is desired
- Privacy beep generation available to prevent eavesdropping
- Easy to understand and operate; instructions for intercom, program, and emergency page permanently printed on front panel
- External booster amplifier can be used when more than 35W is required
- Color-coded controls for easy operation
- 3-conductor, shielded 18, 20, or 22 AWG wire is recommended
- Sturdy desktop cabinet w/ simulated oak finish

Accessories



Connector Kits:
2518 - 18-gauge
2520 - 20-gauge
2522 - 22-gauge

TL156
Insertion Tool
for connector kits



CA10A
Call-in Switch,
2-position



CA11A
Call Privacy Switch,
3-position



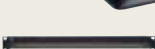
CA17
Call-in Switch,
push-button
(use w/SCR25A)



CDR1
CD Player
& AM/FM Receiver



MBS1000A
Desktop Paging
Microphone



DDU250
Dynamic Desktop
Microphone



SBA225
25-Station Selector
Panel for SI35A



SCR25A
Call-in Module
for SBA225



TWK351
2-Wire Call-In
Adapter Kit

WMT1A
Line-Matching
Transformer

Power Requirements:	120V AC
Dimensions:	PI35A - 20-1/2" W x 8-1/2" H x 11" D SI35A - 20-1/2" W x 12" H x 11" D
Product Weight:	PI35A - 24 lb.; SI35A - 29 lb.

TELECONFERENCE PHONE

Teleconferencing Hub V•HUB

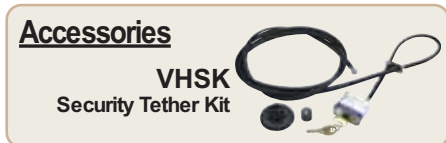


The V•HUB Conference Phone is a full-duplex, simultaneous, two-way communication conference phone that provides clean, clear sound for all of your teleconferencing needs. With three microphones, an easy-to-read recessed LCD display, 10 number speed dial, special calling functions, and a simple three-step setup process, the V•Hub Conference Phone is everything you could ask for in a conference phone... and more.

Product Features:

- Full-duplex operation
- DSP-based echo cancellation
- High-quality speaker
- LCD display screen
- 3 LED display lights for special features
- 10 Number speed dial memory
- 3 Microphones
- Mute button
- Flash button for special calling functions
- Excellent voice quality
- Easy installation
- Connection cables included
- Meets U.S. and Canadian requirements

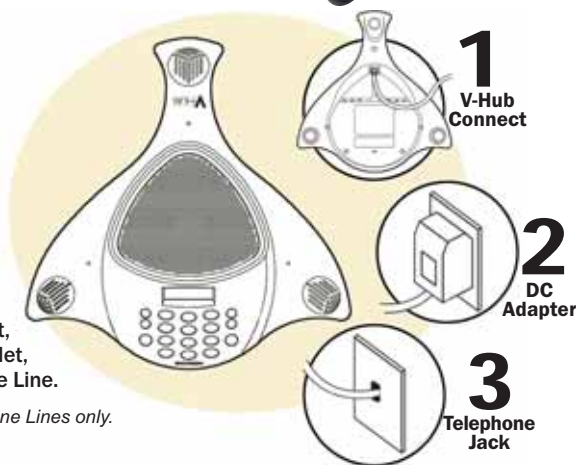
Dimensions:	12-1/4" W x 2-1/2" H x 12-3/4" D
Product Weight:	2 lb.



Easy Setup

Make 3 Simple Connections:
to the V•Hub Unit,
the Electrical Outlet,
and the Telephone Line.

NOTE: For use with Analog Telephone Lines only.



DIGITAL MUSIC-ON-HOLD SYSTEM



ProHold™ Series Pro4, Pro8, Pro12, Pro16

Bogen's ProHold products are digital music-on-hold (MOH) announcers that turn caller's on-hold waiting time into productive information and selling time. This digital system assures simple, reliable, and high-quality playback of messages/music. 4-, 8-, 12-, and 16-minute message storage length models.

Product Features:

- Simple one-step downloading from tape to digital memory when a tape is inserted
- High-reliability digital playback circuitry - no maintenance necessary
- 600-ohm transformer-balanced output and 1W into 8-ohm output
- Built-in tape drive only used while downloading (prevents constant tape use)
- Audio output can be connected to a loudspeaker
- Trigger jack can signal other equipment when message is played
- Trigger input to control message play externally
- Comes with generic on-hold cassette tape
- Speaker, volume, and trigger controls; monitor speaker
- Wall-mounting template hardware included

Power Requirements:	12V AC/DC@800 mA from 120V AC (Power Supply included)
Dimensions:	9-5/8" W x 6-3/4" H x 3-3/8" D
Product Weight:	4 lb. each

ProHold Model	Message Storage Length
Pro4	4 minutes
Pro8	8 minutes
Pro12	12 minutes
Pro16	16 minutes

Trigger Input

A simple stereo mini jack provides a dual-function trigger input. Trigger one-time play with a momentary contact closure. Additional contact closures that happen during the message play are ignored.

The ProHold can also be triggered then stopped during message play. By closing the trigger contacts and holding them closed for more than 5 seconds, the ProHold will stop the message as soon as the contacts are opened. The next trigger will start the message from the beginning. By using the TAMB telephone interface module to interface the ProHold to analog ring-up lines, you can create a simple and effective telephone info line.

A status indicator line from the trigger connector provides feedback to external equipment as to whether it is in the idle mode or playing a message.

