

Draft Beer Counter

Battery replacement

Step # 1:



Here is the replacement kit you will need.

Step # 2:



Remove the cover using a small screwdriver.

AlcoholControls.com

800.285.2337

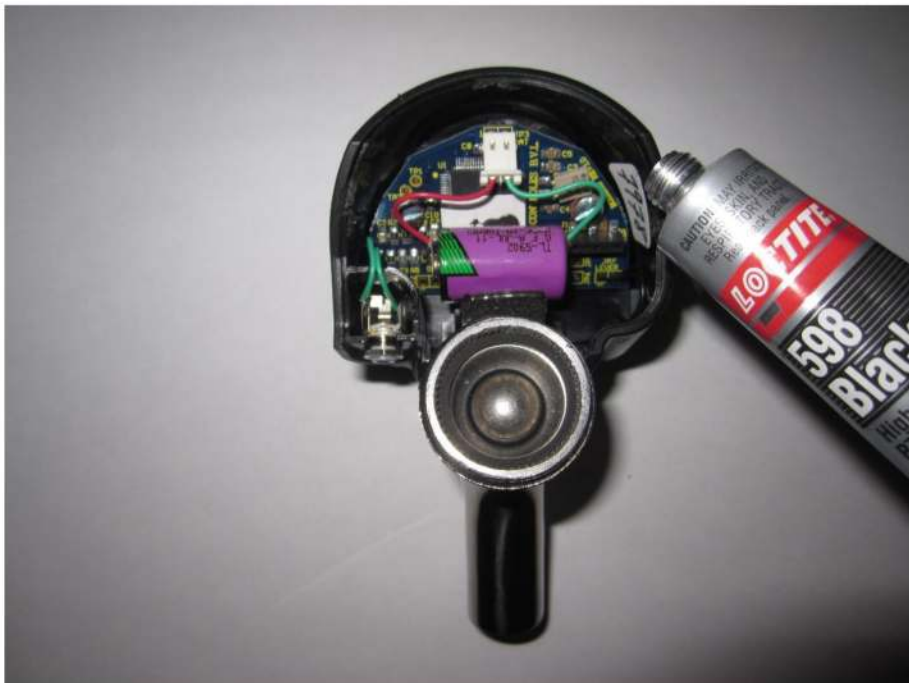
Draft Beer Counter

Step # 3:



Remove the old battery. When you plug the white connector into the two pins, *be sure that the RED wire is on the LEFT hand side.*

Step # 4:



Check if the B.O.S. is working properly. After, place the new battery inside the casing and apply silicone on the inside rim of the casing.

Draft Beer Counter

Step # 5:



Finally, put the cover back and hold it for about one minute.