



ALLPartitions

& P A R T S ©



P: 866-255-8645

F: 866-255-8640

E: help@allpartitions.com

www.allpartitions.com

Accurate Stainless Steel

1.01 Work Included- The toilet partitions shall be stainless steel with floor anchored/overhead braced mounting style as manufactured by Accurate Partitions Corp., Lyons Illinois. Furnish all labor and materials necessary for completion of work in this section as shown in the approved drawings and specified herein.

1.02 Related Work—Specified elsewhere shall include accessories and anchorage/blocking for attachment of partitions.

2.01 Doors, Panels, and Urinal Screens— Shall be 1" thick and fabricated from tension leveled 22 gauge type 304 stainless steel with a # 4 finish bonded to sound deadening honeycomb core.

2.02 Pilasters—Shall be 1 1/4" thick, 82" high, and fabricated from tension leveled 22 gauge type 304 stainless steel with a # 4 finish bonded to sound deadening honeycomb core.

2.03 Material—Doors, panels, pilasters, and urinal screens shall be manufactured with a resin impregnated honeycomb core that is bonded under pressure to the stainless steel with a non-toxic adhesive to ensure solid construction and sound attenuation. All the stainless steel components shall be assembled with a continuous roll-formed interlocking, 22-gauge stainless steel crown molding welded and ground smooth at the corners.

2.04 Finish—All components shall be 304 stainless steel with a # 4 finish and include a PVC film for protection during shipment and installation.

2.05 Door Hardware—Shall include bottom hinge with adjustable cam that permits door to return to a pre-set position when not locked. Hinge, strike and keeper shall be chromium plated Zamac to resist corrosion and through bolted with vandal resistant barrel nuts and shoulder screws. Door hardware shall permit emergency access from the outside of the partition. Doors for handicapped compartments shall be supplied with Accurate ADA paddle handles. **2.06 Mounting Hardware**—Chrome plated Zamac stirrup brackets shall be used to mount panels and pilasters. Mounting hardware shall be secured with vandal resistant screws.

2.07 Construction Design—Partitions shall be anchored to floor with one piece-mounting fork and include integral leveling bolt to provide proper height adjustment. Floor anchoring system shall be concealed by a type 304 stainless steel trim shoe with a #4 finish, secured with two metal clips integrated into the floor anchor assembly. Aluminum head rail with anti-grip profile shall provide overhead bracing and span all partitions and brace the end pilaster to the back wall.

3.01 Installation—Shall be installed in accordance to the Accurate installation instructions with partitions rigid, straight and plumb. Doors and panels shall be mounted 12" above the finished floor.

3.02 Warranty—Accurate Partitions Corp. guarantees its stainless steel partitions, properly maintained, against corrosion or discoloration for 5 YEARS from the date of receipt by the customer. If material is found defective during that period, the material shall be replaced free of charge. No credits or allowances shall be issued for any labor or expenses relating to the replacement of components covered under the warranty plan.



ACCURATE EXPRESS 48 Hour Shipping:

Compartment limits apply #4 Satin finish - floor anchored/overhead braced only.

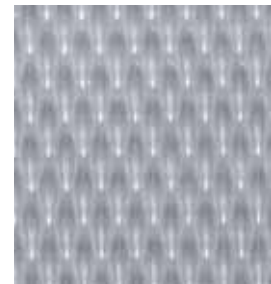
FAST TRACK: 10 WORKING DAYS.

Compartment limits apply. #4 Satin finish - floor anchored/overhead braced style.

ACCURATE stainless steel toilet partitions are highly resilient and retain their gleaming beauty for years. The partitions are composed of strong #304 stainless steel with a #4 satin or textured finish, formed and bonded under pressure to a sound-deadening honeycomb core. The face sheets are held rigid and permanently in place by an interlocking strip welded at each corner.

ACCURATE stainless steel is corrosion resistant and impervious to just about any substance. Scratches caused by acts of vandalism can be removed by buffing. The elegance of ACCURATE stainless steel will enhance and complement any design scheme.

TEXTURED FINISH



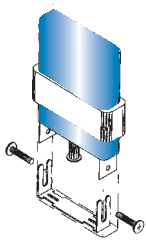
An extra measure of protection against vandalism.

A variety of patterns are offered.

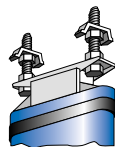
Options:

- Plywood Core
- Stainless Steel Hardware
- Full Height Brackets
- Full Height Piano Hinges
- Textured Finishes

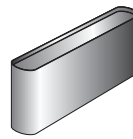
CONSTRUCTION FEATURES FOR



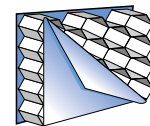
PILASTER MOUNTING
Pilaster adjustments, with floor-mounted jack-leveling device are used on floor-anchored/overhead braced pilasters.



ALTERNATE PILASTER MOUNTING
This type of mounting is furnished on all ceiling hung and floor anchored pilasters.



SHOE CONSTRUCTION
Stainless steel, double-hemmed, trim shoe with #4 satin finish conceals mounting fasteners and hardware.



HONEYCOMB CORE
Core is made of cellular honeycomb. This type of core provides strong construction.