



F: 866-255-8640

P: 866-255-8645

E: help@allpartitions.com

www.allpartitions.com

Accurate Plastic Laminate

1.01 Work Included- The toilet partitions shall be plastic laminate with floor anchored/overhead braced mounting style as manufactured by Accurate Partitions Corp., Lyons Illinois.

Furnish all labor and materials necessary for completion of work in this section as shown in the approved drawings and specified herein.

1.02 Related Work—Specified elsewhere shall include accessories and anchorage/blocking for attachment of partitions.

2.01 Doors, Panels and Urinal Screens—Shall have a finished thickness of 1" with decorative plastic laminate applied to 7/8" thick particleboard. **2.02 Pilasters**—Shall have a finished thickness of 1 1/4" with decorative plastic laminate applied to 1 1/8" thick particleboard.

2.03 Material—Doors, panels, pilasters and urinal screens shall be fabricated from 45-pound density, resin impregnated 7/8" thick particleboard. Decorative plastic laminate shall be applied to the particleboard with a nontoxic, water resistant adhesive under high pressure. All components shall be edge banded prior to face lamination to ensure moisture run-off and vandal resistance.

2.04 Finish—All components shall have faces and edges covered with a decorative, vertical grade (.050 thickness) laminate.

2.05 Color—Will be selected from Accurate's full range of standard designer colors.

2.06 Door Hardware—Shall be Accurate cam-action hinge that permits door to return to a pre-set position when not locked. Hinge, strike and keeper shall be chromium plated Zamac to resist corrosion and through bolted with vandal resistant barrel nuts and shoulder screws. Cam-action hinge shall allow emergency access by lifting the door from the bottom.

2.07 Mounting Hardware—Chrome plated Zamac stirrup brackets shall be secured to walls and pilasters with tamper resistant fasteners. Panels shall be through bolted with tamper resistant barrel nuts and shoulder screws.

2.08 Construction Design—Partitions shall be anchored to the floor with 1/4"X1" steel mounting bar attached to the bottom of the pilaster. Each mounting bar shall be secured to the floor with 3/8" zinc plated bolts. Floor anchoring system shall be concealed by a type 304 stainless steel trim shoe with a #4 finish. Aluminum head rail with anti-grip profile shall provide overhead bracing and span all partitions and brace the end pilaster to the back wall.

3.01 Installation—Shall be installed in accordance to the Accurate installation instructions with partitions rigid, straight and plumb. Doors and panels shall be mounted 12" above the finished floor.

3.02 Warranty—Accurate Partitions Corp. guarantees its plastic laminate partitions, properly maintained, against discoloration or delamination for 2 YEARS from the date of receipt by the customer. If material is found defective during that period, the material shall be replaced free of charge. No credits or allowances shall be issued for any labor or expenses relating to the replacement of components covered under the warranty plan.

Accurate Plastic Laminate

ACCURATE plastic laminate partitions combine design flexibility with affordable cost. The high pressure laminate finishes, bonded under pressure to a solid impact-resistant particle board core, meet or exceed all NEMA standards. Edge banding of all components prior to face lamination ensures optimum water runoff and durability.

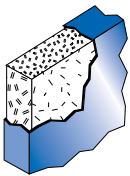
ACCURATE plastic laminate is available in all four installation styles and a variety of designer colors to complement vanities and counter tops. They are the finish of choice for commercial and institutional installations where aesthetics are essential.



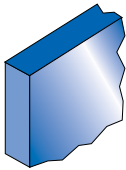
COLOR SELECTION

1010 Mission White	1020 Antique White	4000 Almond	4010 Sand							
4410 Natural Canvas	4300 Lime Stone	1130 Neutral Glace	4583 Desert Zephyr							
4040 Khaki Brown	*4516 Windswept Tan	9680 Lodestone	3713 Canyon Zephyr							
9096 Taupe	3000 Silver Gray	3010 Dove Gray	3300 Folkstone Celesta	3520 Tundra Terra	7400 Lapis Envision	7010 Brittany Blue	7318 Navy Grafix	3554 Olive Legacy	3612 Twilight Zephyr	
6010 Silver Moss	6035 Hunter Nebula	5000 Burgundy	4611 Natural Tigris	4777 MDF Solidz	4801 Tungsten EV	9208 Beluga Beige	9310 Cotta Stone	9261 Ochre Roletta	9487 Oxide	
4215 Earthen Terra	9176 Burnished Chestnut	*9292 Windswept Bronze	5058 Burnished Ember	*3849 Windswept Pewter	3542 Storm Solidz	3020 Graphite Grafix	3330 Ebony Granite	2150 Graphite	2000 Black	
							*9918 Maple	*9954 Cherry	*9939 Mahogany	

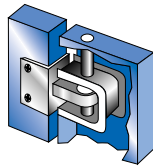
CONSTRUCTION FEATURES



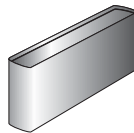
SOLID CORE
45# high density particleboard to resist warping and ensure surface smoothness.



EDGE CONSTRUCTION
Face laminate overlaps edge banding to ensure water runoff and deter vandalism.



DOOR HINGES
Full weight-bearing hinges on both top and bottom of each door. Wrap-around mounting and through bolting for safety.



SHOE CONSTRUCTION
Stainless steel, double-hemmed, trim shoe with #4 satin finish conceals mounting fastener and hardware.



VANDAL-RESISTANT FASTENERS
Special driver installs fasteners which virtually eliminates unauthorized removal and ensures easy installation.

*Directional Pattern - Pattern on panels over 60" wide will run perpendicular to pattern on doors and pilasters.

Actual Colors will vary from those shown do to limitations in printing process. Please make final color selection from available color samples.

FAST TRACK: 10 WORKING DAYS
Compartment limits apply.
Any standard color - in all four styles.

Options:

- Steel Core Pilasters
- Plywood Core
- Stainless Steel Hardware
- Full Height Brackets
- Full Height Piano Hinges